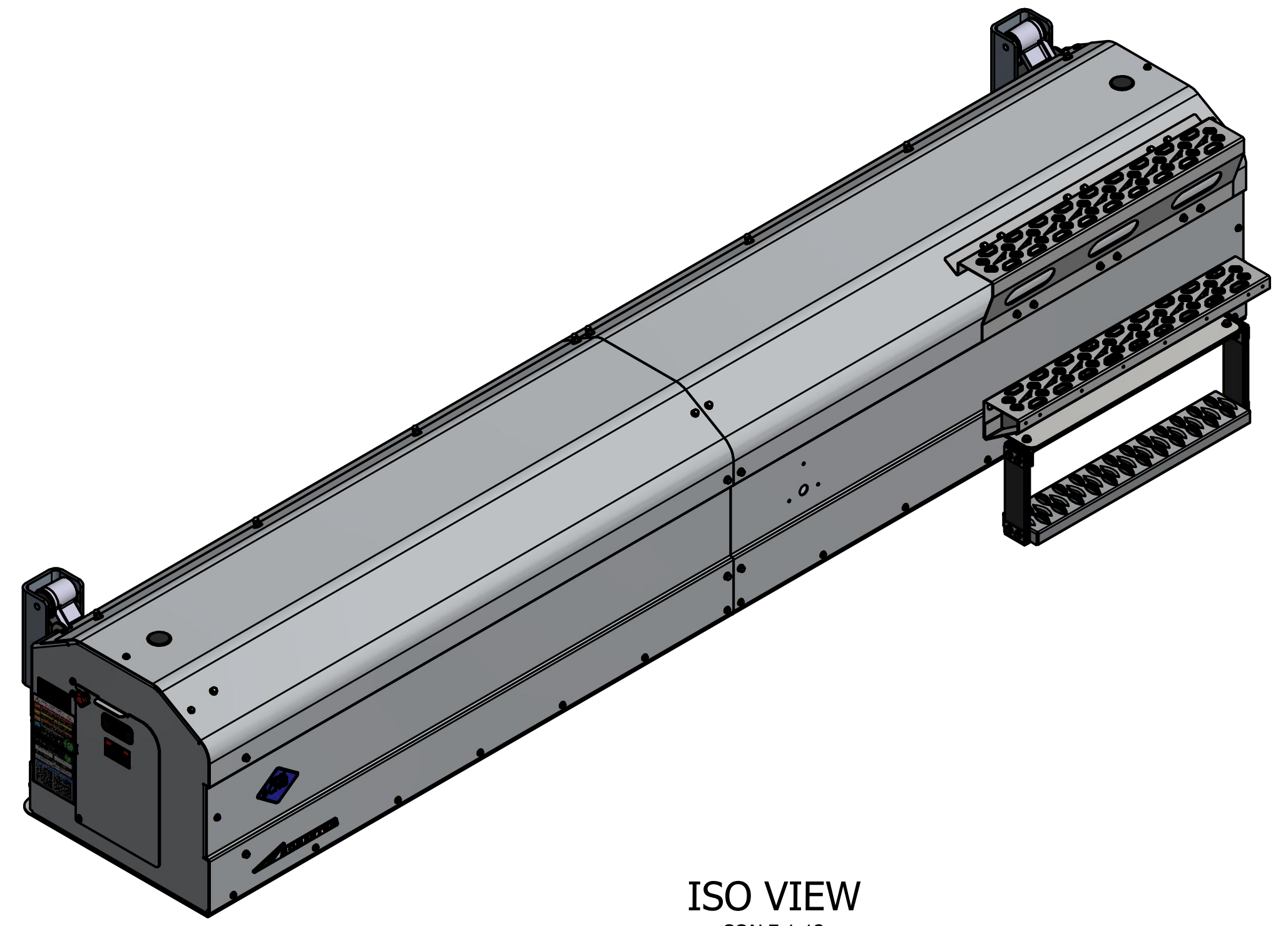


ITEM	QTY	PART NUMBER	DESCRIPTION
1	1	MA01-1728	TANK - LUXFER, 22" X 140", 55 DGE
2	1	MB34-1001	Emblem - Momentum
3	1	MB34-1001-DECAL	DECAL - MOMENTUM EMBLEM
4	1	MB34-1003	DECAL - DANGER
5	1	MB34-1007	Label - Serial Number Tag
6	1	MB34-1015	Decal - Fuel Container Life
7	1	MB34-1100-N	DECAL - 3600 PSI CNG DIAMOND (A)
8	3	MB34-1109-N	DECAL - HIGH PRESSURE PRD (A)
9	8	MB34-1110-N	DECAL - HIGH PRESSURE CNG (A)
10	1	MB34-1614	DECAL - TANK PRESSURE, RED BORDER
11	1	MB34-1634	DECAL - ATTENTION SERVICE TECHNICIAN
12	1	MB34-1668	DECAL - SERVICE DOOR ACCESS
13	1	MB34-1669	DECAL - HIGH PRESSURE PRD AND CNG LINES
14	1	MB34-1670	DECAL - SYSTEM INFO, MAINTENANCE SCHEDULE
15	1	MB34-1671	DECAL - REAR BULKHEAD, NON-FMM 55 DGE SM
16	1	MB37-1000	Adhesive, Die Cut 45mil VHB for emblems
17	1	MC06-2007R	COVER - END, VALVE, 55 DGE, RH
18	1	MC06-2008R	COVER - END, FLOATING, 55 DGE, RH
19	1	MC06-2009R	COVER - BOTTOM, VALVE END, NON-FMM, SIDE MOUNT, 55 DGE, RH
20	1	MC06-2010R	COVER - BOTTOM, FLOATING END, SIDE MOUNT, 55 DGE, RH
21	1	MC06-2011R	COVER - BACK, LOWER, SLIDING END, 55 DGE, RH
22	1	MC06-2012R	COVER - BACK, LOWER, FIXED END, 55 DGE, RH
23	1	MC06-2013R	COVER - BACK, UPPER, SLIDING END, 55 DGE, RH
24	1	MC06-2014R	COVER - BACK, UPPER, FIXED END, 55 DGE, LH
25	1	MC06-2015R	COVER - FRONT, 55 DGE, FLOATING END, STEPS, RH
26	1	MC06-2016R	COVER - FRONT, 55 DGE, FIXED END, NO FMM, RH
27	1	MC07-1623R	DOOR - VALVE, 55 DGE, RH
28	1	MD04-1000	BUSHING-NECK BLOCK
29	1	MD04-2048	PLATE - CATCH, DOOR KNOB
30	1	MD04-2056R	BRACKET - REAR BULKHEAD, 55 DGE SM, NON-FMM, RH
31	1	MD04-2060	BRACKET - GAUGE, TANK PRESSURE, 55 DGE SM
32	1	MD04-2061	BRACKET - MOUNTING ANGLE, THIRD STEP, SM
33	1	MD04-2063	SPACER - DOOR PIVOT, SM
34	3	MD18-1001	BRACKET-PRD MOUNT
35	3	MD18-1002	BRACKET - PRD STANDOFF
36	3	MD20-1007	CLAMP - TUBE, DOUBLE, 1/2"
37	3	MD20-1008	PLATE - CLAMP, DOUBLE 1/2"
38	2	ME04-1059	Structure - Neck Block, Threaded, Anodized Blue, 2"-12 Threads
39	2	ME04-2340	EXTRUSION - ANGLE, LOWER, 55 DGE
40	2	ME04-2343	PLATE - DOUBLER, 30 DGE
41	4	ME04-2347	EXTRUSION - RAIL, T-SLOT, 55 DGE SIDE MOUNT
42	1	ME04-2368	NECK BLOCK - FLOATING, INSERT, EXTENDED 1.144"
43	1	ME04-2377L	WELDMENT - END PLATE, 30 DGE, LH
44	1	ME04-2377R	WELDMENT - END PLATE, 30 DGE, RH
45	2	ME29-1669	ASSEMBLY - STRUCTURE, LOWER ISOLATOR MOUNT, WITHOUT U-BRACKET
46	2	ME29-1694	WELDMENT - BRACKET, FRAME MOUNT SUPPORT "U", TANKS RAISED 2", 2 DEG ANGLE
47	11	MF17-1015	ADAPTER - STRAIGHT - #8 ORING BOSS X #8 ORFS
48	2	MF17-1016	PLUG - #8 ORING BOSS
49	1	MF17-1102-N	BULKHEAD-UNION, 1/2" ORFS
50	1	MF17-1143-N	FITTING - BULKHEAD, 90° ELBOW - #8 ORFS X #8 ORFS
51	1	MF17-1150-N	ADAPTER - STRAIGHT, 8 ORFS FEMALE SWVL X 6 ORFS
52	1	MF17-1160-N	PLUG - #6, 9/16-18, ORB, HOLLOW HEX PLUG
53	1	MF17-1623	TEE - BRANCH #8 ORB X #8 ORFS X #8 ORFS
54	1	MF17-1628	FITTING - UNION, 90° ELBOW, TUBE, 3/8" TUBE OD
55	1	MG04-1600	SUPPORT - GAUGE MOUNT
56	1	MG25-1607	GAUGE, 0-6000 PSI, 2.5" DIAMETER PANEL MOUNT, 3/8" TUBE STUB
57	30	MH04-1001	NUT - T-NUT, 5/16"-18, YELLOW ZINC
58	1	MH27-1001-004-20-044-AS-005-SH	BOLT - SOCKET SHOULDER, 5/16" SHOULDER DIA, 5/8" SHOULDER LG
59	22	MH27-1001-004-20-075-YZ-008-HH	(VMI) HX CP PL USS 1/4X3/4
60	17	MH27-1001-004-20-100-YZ-008-HH	(VMI) HX CP PL USS 1/4X1
61	9	MH27-1001-004-20-125-YZ-008-HH	(VMI) HX CP PL USS 1/4X1-1/4
62	9	MH27-1001-004-20-225-YZ-008-HH	(VMI) HX CP PL USS 1/4X2-1/4
63	21	MH27-1001-005-18-075-YZ-008-HH	(VMI) 5/16-18 x .75 Yellow Zinc Hex Bolt
64	9	MH27-1001-005-18-125-YZ-008-HH	BOLT - 5/16-18 x 1-1/4" L, Hex Head, YZ, GR8
65	8	MH27-1001-006-16-100-ZN-005-SQ	BOLT - SQUARE HEAD, 3/8"-16 X 1" LONG, GRADE 5, ZINC
66	2	MH27-1001-006-16-125-YZ-008-HH	(VMI) HX CP PL USS 3/8X1-1/4
67	88	MH27-1001-006-16-150-YZ-008-HH	(VMI) HCS 3/8-16 x 1.5 YZ8
68	12	MH27-1001-008-13-150-YZ-008-HH	(VMI) HX CP PL USS 1/2X1-1/2
69	4	MH27-1001-008-13-200-YZ-008-HH	(VMI) 1/2"-13 X 2" HEX HEAD BOLT
70	4	MH27-1001-008-13-750-YZ-008-HH	BOLT - HEX HEAD, 1/2"-13 X 7-1/2"
71	2	MH27-1001-010-11-475-YZ-008-HH	(VMI) HCS 5/8-11 x4.75 YZ8
72	22	MH27-1003-004-20-YZ-008-NL	(VMI) NYLON LOCKNU GR.8 1/4-20

ITEM	QTY	PART NUMBER	DESCRIPTION
73	38	MH27-1003-006-16-YZ-008-NL	(VMI) NYLON LOCNUT GR.8 3/8-16
74	10	MH27-1003-008-13-YZ-008-NL	(VMI) NYLON LOCNUT GR.8 1/2-13
75	78	MH27-1004-004-FL-YZ-008	WASHER - FLAT, #6, SS
76	2	MH27-1004-005-BW-SS-188	WASHER - BELLEVILLE, 5/16" X 0.078"
77	30	MH27-1004-005-FL-YZ-008	WASHER - FLAT, #6, SS
78	30	MH27-1004-005-LK-YZ-008	WASHER - LOCK, 5/16" YELLOW ZINC, (GRADE 8)
79	8	MH27-1004-006-FL-SS-316	WASHER - FLAT, #6, SS
80	128	MH27-1004-006-FL-YZ-008	WASHER - FLAT, #6, SS
81	2	MH27-1004-007-FL-NY-XXX	WASHER - NYLON, 7/16" X 3/4" OD
82	30	MH27-1004-008-FL-YZ-008	WASHER - FLAT, #6, SS
83	3	MH27-1009	NUT - HALF HEX RIVET - 1/4"-20 (GRIP RANGE 0.165-0.260)
84	44	MH27-1010	NUT - HALF HEX RIVET, 3/8"-16, GRADE 5, (GRIP RANGE 0.150" - 0.312")
85	8	MH27-1015	NUT - ACORN, 3/8"-16, CHROME PLATED
86	34	MH27-1625	RIVNUT - 1/4-20 HEX, SHORT GRIP LENGTH
87	1	MH27-1635	BEARING - SLEEVE, 0.311" ID, 0.438" OD, 0.5" LG, BRONZE
88	1	MH30-1600	SUPPORT TANK LH THREADED END
89	1	MH30-1603	SUPPORT TANK RH REAR THREADED END
90	2	MK31-1602	PLUG - SHEET METAL, PLASTIC, 2.000" HOLE DIA, 0.25" MAX PANEL THICKNESS
91	1	MK32-1608	KNOB - 5 STAR, RED, 1/4"-20 x 1-1/2" LG BOLT
92	1	MK33-1607	STEP - FLEXIBLE RUBBER, BLACK
93	1	MS19-1605	VALVE - TANK, OASIS, FIXED ADAPTOR, WITH #8 ORB PRD, SUPPLY PORT, AND TEST PORT
94	1	MT21-2546R-RED	TUBING - 1/2", 55 DGE SM
95	1	MT21-2547R-N	TUBING - 1/2", 55 DGE SM
96	2	MT21-2548-RED	TUBING - 1/2", 55 DGE SM
97	2	MT21-2549-N	TUBING - 1/2", 55 DGE SM
98	1	MT21-2550R-YELLOW	TUBING - 1/2", 55 DGE SM
99	1	MT21-2560R-RED	TUBING - 3/8", 55 DGE SM
100	2	MV29-1000	LOWER ISOLATOR - SIDEMOUNT
101	2	MV29-1001-003	(VMI) SNUBBING WASHER - SIDEMOUNT-SMALL
102	2	MV30-1001	UPPER ISOLATOR
103	3	MW18-1000	PRD - OMB YORK
104	1	MX01-1604	STEP
105	1	MX01-1605	STEP



ISO VIEW
SCALE 1:12

ESTIMATED SYSTEM WEIGHT
EMPTY: 950 LBS
FILLED: 1300 LBS

PRELIMINARY

I

DO NOT SCALE THIS PRINT

CONFIDENTIAL AND TRADE SECRET INFORMATION OF NATURAL GAS FUEL SYSTEMS, INC. dba MOMENTUM FUEL TECHNOLOGIES
This document and the information in it is confidential, proprietary and trade secret information of Natural Gas Fuel Systems, Inc. dba Momentum Fuel Technologies on behalf of itself and its subsidiaries and affiliates ("Momentum"). It contains information intended only for the person to whom it is transmitted and may not be disclosed to any third party, in whole or in part, or used to manufacture anything shown or referred to herein, without Momentum's express, written permission. This document must be returned to Momentum on request.

Any form of reproduction, dissemination, copying, disclosure, modification, distribution, and or publication of this document and the information contained herein is strictly prohibited.

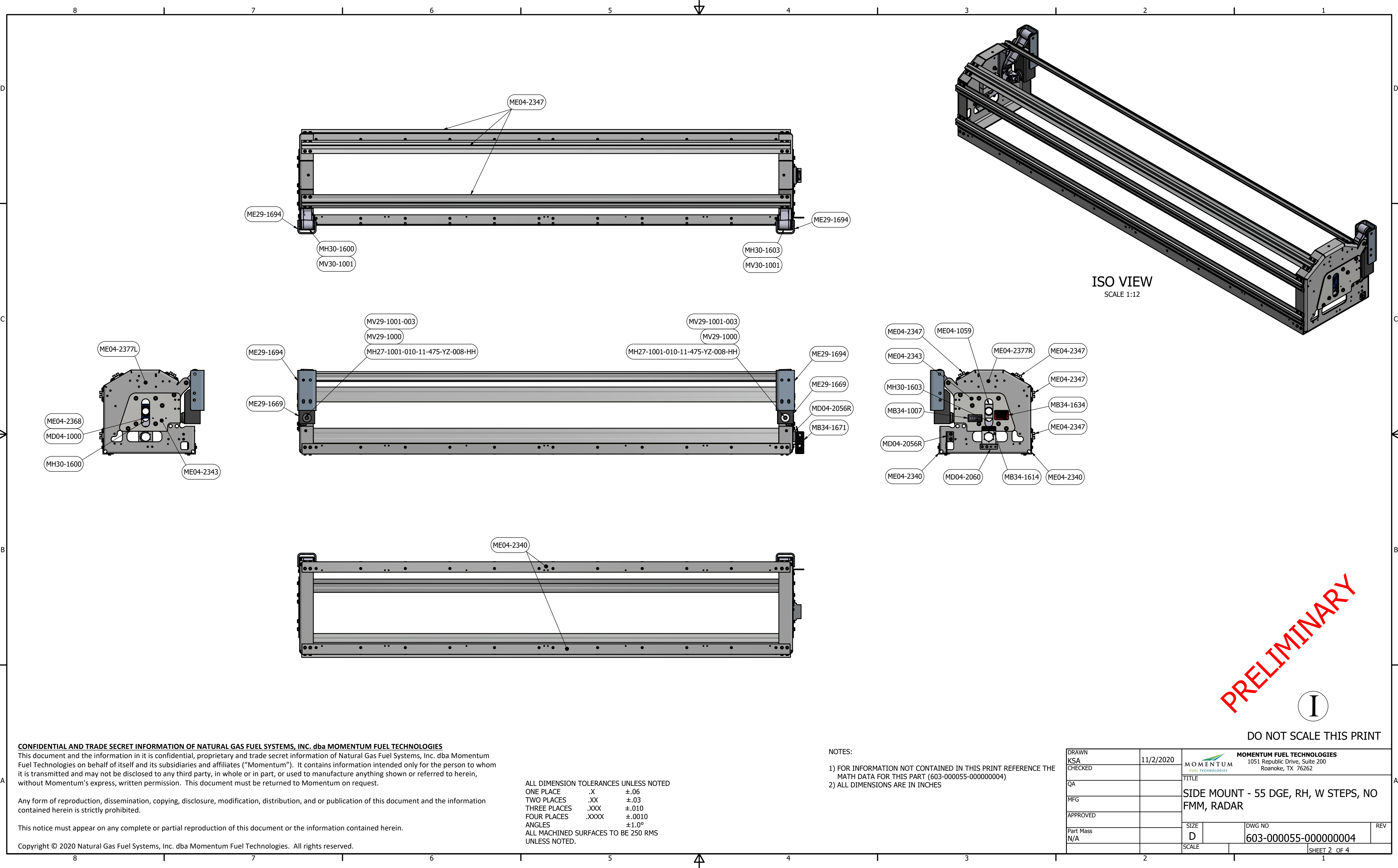
This notice must appear on any complete or partial reproduction of this document or the information contained herein.

Copyright © 2020 Natural Gas Fuel Systems, Inc. dba Momentum Fuel Technologies. All rights reserved.

ALL DIMENSION TOLERANCES UNLESS NOTED
ONE PLACE .X ±.06
TWO PLACES .XX ±.03
THREE PLACES .XXX ±.010
FOUR PLACES .XXXX ±.0010
ANGLES ±1.0°
ALL MACHINED SURFACES TO BE 250 RMS UNLESS NOTED.

NOTES:
1) FOR INFORMATION NOT CONTAINED IN THIS PRINT REFERENCE THE MATH DATA FOR THIS PART (603-000055-000000004)
2) ALL DIMENSIONS ARE IN INCHES

DRAWN	11/2/2020	MOMENTUM FUEL TECHNOLOGIES 1051 Republic Drive, Suite 200 Roanoke, TX 76262	
KSA CHECKED			
QA		TITLE	
MFG		SIDE MOUNT - 55 DGE, RH, W STEPS, NO FMM, RADAR	
APPROVED		SIZE	REV
Part Mass		DWG NO	
N/A		603-000055-000000004	
SCALE		SHEET 1 OF 4	



ISO VIEW
SCALE 1:12

PRELIMINARY

I

DO NOT SCALE THIS PRINT

CONFIDENTIAL AND TRADE SECRET INFORMATION OF NATURAL GAS FUEL SYSTEMS, INC. dba MOMENTUM FUEL TECHNOLOGIES
 This document and the information in it is confidential, proprietary and trade secret information of Natural Gas Fuel Systems, Inc. dba Momentum Fuel Technologies on behalf of itself and its subsidiaries and affiliates ("Momentum"). It contains information intended only for the person to whom it is transmitted and may not be disclosed to any third party, in whole or in part, or used to manufacture anything shown or referred to herein, without Momentum's express, written permission. This document must be returned to Momentum on request.

Any form of reproduction, dissemination, copying, disclosure, modification, distribution, and or publication of this document and the information contained herein is strictly prohibited.

This notice must appear on any complete or partial reproduction of this document or the information contained herein.

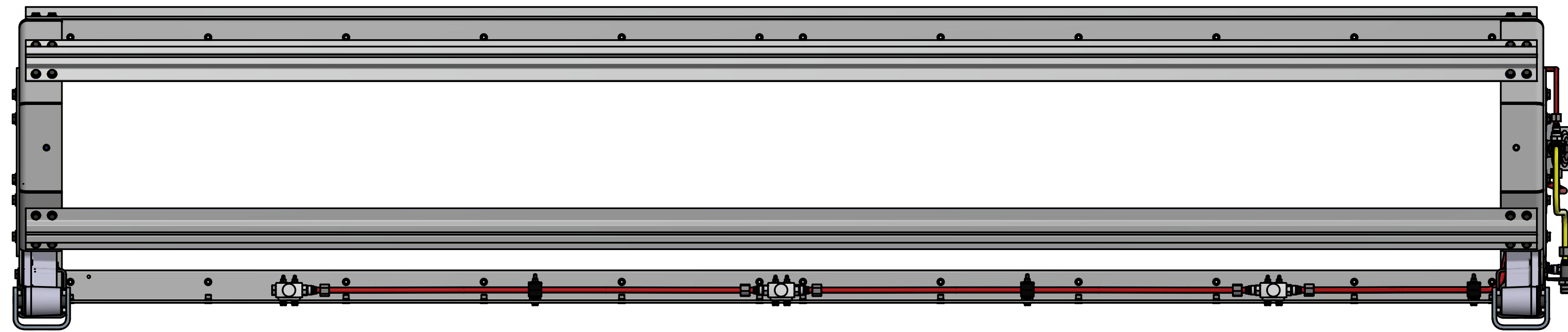
Copyright © 2020 Natural Gas Fuel Systems, Inc. dba Momentum Fuel Technologies. All rights reserved.

ALL DIMENSION TOLERANCES UNLESS NOTED
 ONE PLACE .X ±.06
 TWO PLACES .XX ±.03
 THREE PLACES .XXX ±.010
 FOUR PLACES .XXXX ±.0010
 ANGLES ±1.0°
 ALL MACHINED SURFACES TO BE 250 RMS UNLESS NOTED.

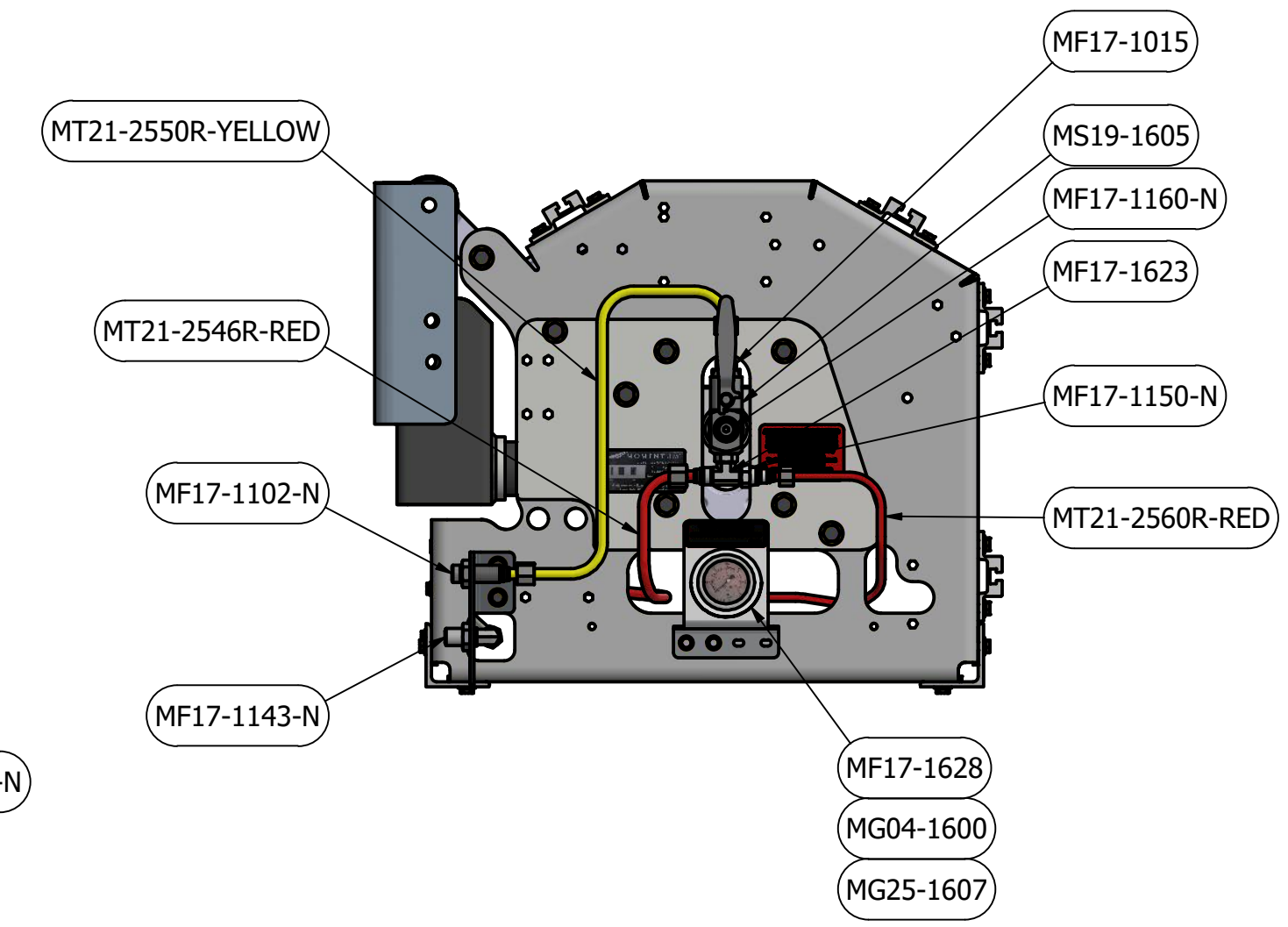
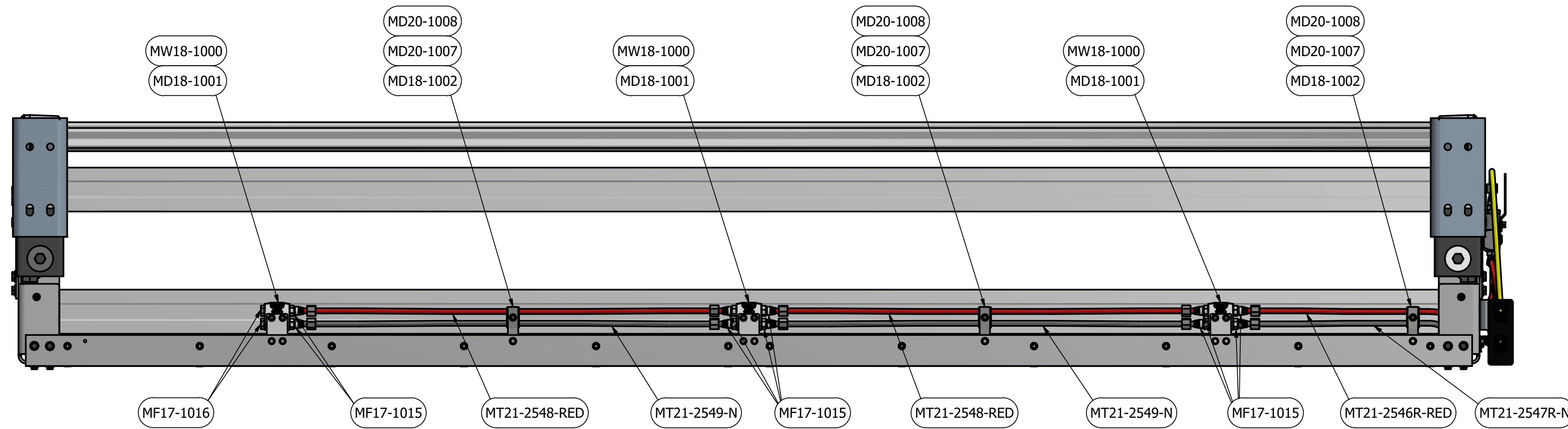
NOTES:

- 1) FOR INFORMATION NOT CONTAINED IN THIS PRINT REFERENCE THE MATH DATA FOR THIS PART (603-000055-000000004)
- 2) ALL DIMENSIONS ARE IN INCHES

DRAWN	KSA	11/2/2020	MOMENTUM FUEL TECHNOLOGIES 1051 Republic Drive, Suite 200 Roanoke, TX 76262	
CHECKED			MOMENTUM FUEL TECHNOLOGIES	
QA			TITLE	
MFG			SIDE MOUNT - 55 DGE, RH, W STEPS, NO FMM, RADAR	
APPROVED			DWG NO	
Part Mass	N/A		SCALE	REV
			D	603-000055-000000004
			SHEET 2 OF 4	



ISO VIEW
SCALE 1:12



PRELIMINARY

I

DO NOT SCALE THIS PRINT

CONFIDENTIAL AND TRADE SECRET INFORMATION OF NATURAL GAS FUEL SYSTEMS, INC. dba MOMENTUM FUEL TECHNOLOGIES
 This document and the information in it is confidential, proprietary and trade secret information of Natural Gas Fuel Systems, Inc. dba Momentum Fuel Technologies on behalf of itself and its subsidiaries and affiliates ("Momentum"). It contains information intended only for the person to whom it is transmitted and may not be disclosed to any third party, in whole or in part, or used to manufacture anything shown or referred to herein, without Momentum's express, written permission. This document must be returned to Momentum on request.

Any form of reproduction, dissemination, copying, disclosure, modification, distribution, and or publication of this document and the information contained herein is strictly prohibited.

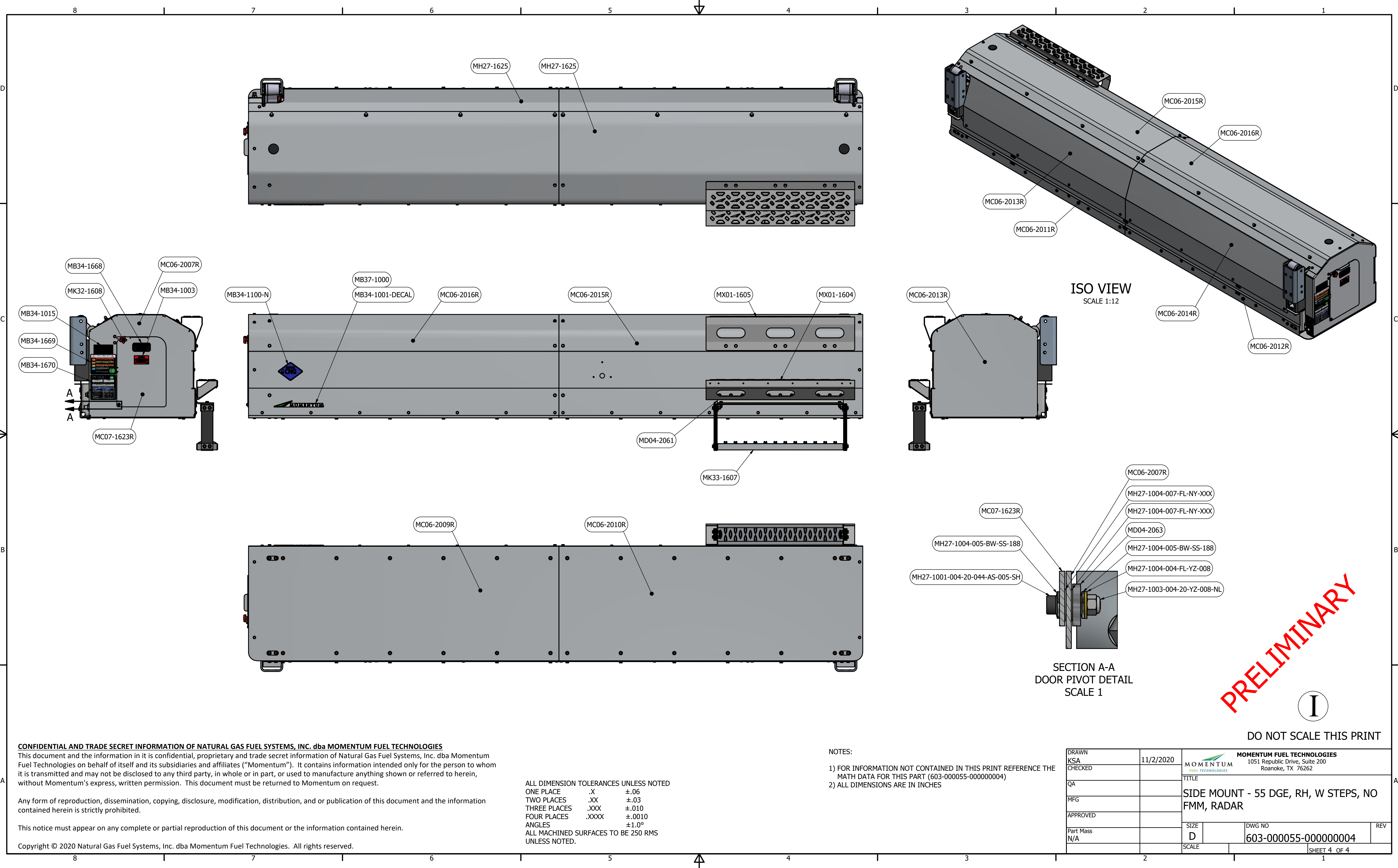
This notice must appear on any complete or partial reproduction of this document or the information contained herein.

Copyright © 2020 Natural Gas Fuel Systems, Inc. dba Momentum Fuel Technologies. All rights reserved.

ALL DIMENSION TOLERANCES UNLESS NOTED
 ONE PLACE .X ±.06
 TWO PLACES .XX ±.03
 THREE PLACES .XXX ±.010
 FOUR PLACES .XXXX ±.0010
 ANGLES ±1.0°
 ALL MACHINED SURFACES TO BE 250 RMS UNLESS NOTED.

NOTES:
 1) FOR INFORMATION NOT CONTAINED IN THIS PRINT REFERENCE THE MATH DATA FOR THIS PART (603-000055-000000004)
 2) ALL DIMENSIONS ARE IN INCHES

DRAWN	KSA	11/2/2020	MOMENTUM FUEL TECHNOLOGIES 1051 Republic Drive, Suite 200 Roanoke, TX 76262	
CHECKED			TITLE SIDE MOUNT - 55 DGE, RH, W STEPS, NO FMM, RADAR	
QA			SIZE	DWG NO
MFG			D	603-000055-000000004
APPROVED			SCALE	REV
Part Mass	N/A			
			SHEET 3 OF 4	



CONFIDENTIAL AND TRADE SECRET INFORMATION OF NATURAL GAS FUEL SYSTEMS, INC. dba MOMENTUM FUEL TECHNOLOGIES
 This document and the information in it is confidential, proprietary and trade secret information of Natural Gas Fuel Systems, Inc. dba Momentum Fuel Technologies on behalf of itself and its subsidiaries and affiliates ("Momentum"). It contains information intended only for the person to whom it is transmitted and may not be disclosed to any third party, in whole or in part, or used to manufacture anything shown or referred to herein, without Momentum's express, written permission. This document must be returned to Momentum on request.

Any form of reproduction, dissemination, copying, disclosure, modification, distribution, and or publication of this document and the information contained herein is strictly prohibited.

This notice must appear on any complete or partial reproduction of this document or the information contained herein.

Copyright © 2020 Natural Gas Fuel Systems, Inc. dba Momentum Fuel Technologies. All rights reserved.

ALL DIMENSION TOLERANCES UNLESS NOTED
 ONE PLACE .X ±.06
 TWO PLACES .XX ±.03
 THREE PLACES .XXX ±.010
 FOUR PLACES .XXXX ±.0010
 ANGLES ±1.0°
 ALL MACHINED SURFACES TO BE 250 RMS UNLESS NOTED.

NOTES:
 1) FOR INFORMATION NOT CONTAINED IN THIS PRINT REFERENCE THE MATH DATA FOR THIS PART (603-000055-000000004)
 2) ALL DIMENSIONS ARE IN INCHES

DRAWN	KSA	11/2/2020	MOMENTUM FUEL TECHNOLOGIES 1051 Republic Drive, Suite 200 Roanoke, TX 76262	
CHECKED			TITLE SIDE MOUNT - 55 DGE, RH, W STEPS, NO FMM, RADAR	
QA			SIZE	DWG NO
MFG			D	603-000055-000000004
APPROVED			SCALE	REV
Part Mass	N/A			
			SHEET 4 OF 4	

PRELIMINARY

I

DO NOT SCALE THIS PRINT