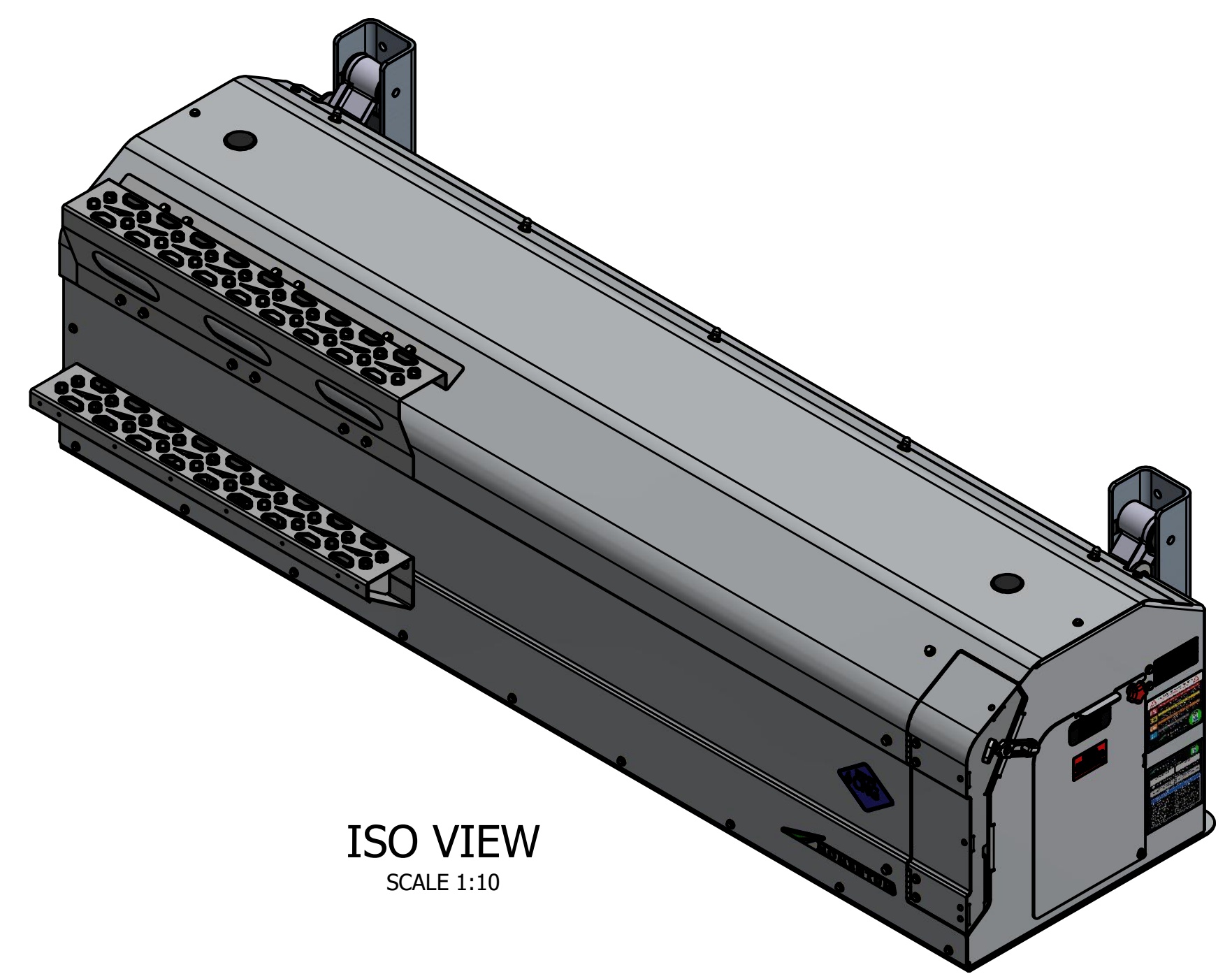


ITEM	QTY	PART NUMBER	DESCRIPTION
1	1	AT18-1000	VENT CAP - AFTERMARKET, PRD, RED, SLIP-ON
2	1	MA01-1716	TANK - LUXFER 22 X 86 Type 4 WITH MOMENTUM BOSSES, W/O NECK BLOCKS
3	1	MB34-1001	Emblem - Momentum
4	1	MB34-1001-DECAL	DECAL - MOMENTUM EMBLEM
5	1	MB34-1003	DECAL - DANGER
6	1	MB34-1007	Label - Serial Number Tag
7	1	MB34-1015	Decal - Fuel Container Life
8	1	MB34-1100-N	DECAL - 3600 PSI CNG DIAMOND (A)
9	3	MB34-1109-N	DECAL - HIGH PRESSURE PRD (A)
10	8	MB34-1110-N	DECAL - HIGH PRESSURE CNG (A)
11	1	MB34-1124-N	DECAL - W BRACKET UPPER
12	2	MB34-1633	DECAL-LOW PRESSURE (REGULATED) CNG
13	1	MB34-1634	DECAL - ATTENTION SERVICE TECHNICIAN
14	1	MB34-1662	DECAL - DEFUEL VALVE, HP GAUGE, LP GAUGE
15	1	MB34-1663	DECAL - LOWER W-BRACKET
16	1	MB34-1664	DECAL - MANIFOLD BRACKET
17	1	MB34-1665	DECAL - REAR BULKHEAD
18	1	MB34-1667	DECAL - MANUAL SHUT OFF VALVE, GREEN LYNC
19	1	MB34-1668	DECAL - SERVICE DOOR ACCESS
20	1	MB34-1669	DECAL - HIGH PRESSURE PRD AND CNG LINES
21	1	MB34-1670	DECAL - SYSTEM INFO, MAINTENANCE SCHEDULE
22	1	MB37-1000	Adhesive, Die Cut 45mil VHB for emblems
23	1	MC06-1998L	COVER - BACK, UPPER, 30 DGE, LH
24	1	MC06-1999L	COVER - FRONT, 30 DGE, FMM, STEPS, LH
25	1	MC06-2000L	COVER - BACK, LOWER, 30 DGE, LH
26	1	MC06-2001L	COVER - BOTTOM, SIDE MOUNT, 30 DGE, LH
27	1	MC06-2003L	COVER - END, FLOATING, 30 DGE, LH
28	1	MC06-2004L	COVER - END, VALVE, 30 DGE, LH
29	1	MC07-1623L	DOOR - VALVE, 55 DGE, LH
30	1	MC32-1609L	ASSEMBLY - DOOR, FMM, 30 DGE, LH
31	1	MD04-1000	BUSHING-NECK BLOCK
32	1	MD04-2045	BRACKET - DEFUEL VALVE, HP GAUGE, LP GAUGE
33	1	MD04-2048	PLATE - CATCH, DOOR KNOB
34	1	MD04-2049L	BRACKET - REAR BULKHEAD, 30 DGE, LH
35	1	MD04-2050L	BRACKET - LOWER W-BRACKET, 30 DGE, LH
36	1	MD04-2053	PLATE - MOUNTING, REGULATOR, 30 DGE
37	1	MD04-2063	SPACER - DOOR PIVOT, SM
38	2	MD18-1001	BRACKET-PRD MOUNT
39	1	MD18-1002	BRACKET - PRD STANDOFF
40	1	MD20-1002	CLAMP - TUBE, SINGLE 1/2"
41	1	MD20-1004	Top Plate, Single Tube Clamp
42	1	MD20-1007	CLAMP - TUBE, DOUBLE, 1/2"
43	1	MD20-1008	PLATE - CLAMP, DOUBLE 1/2"
44	1	MD23-1006	3/16 x 48 x 120, A572, 58KSI MIN
45	1	MD23-1122-N	3/16 x 48 x 120, A572, 58KSI MIN
46	1	MD32-1005	INSPECTION PORT
47	1	MD32-1608	PLATE - MOUNTING, FMM HINGE, BOTTOM, 30 DGE
48	1	MD32-1609	PLATE - MOUNTING, FMM HINGE, TOP, 30 DGE
49	1	ME04-1058	Structure - Neck Block, for Insert, Anodized Blue, Sliding End
50	2	ME04-1059	Structure - Neck Block, Threaded, Anodized Blue, 2"-12 Threads
51	2	ME04-2343	PLATE - DOUBLER, 30 DGE
52	1	ME04-2377L	WELDMENT - END PLATE, 30 DGE, LH
53	1	ME04-2377R	WELDMENT - END PLATE, 30 DGE, RH
54	2	ME04-2390	EXTRUSION - ANGLE, LOWER, 30 DGE
55	4	ME04-2391	EXTRUSION - RAIL, T-SLOT, 30 DGE
56	2	ME29-1669	ASSEMBLY - STRUCTURE, LOWER ISOLATOR MOUNT, WITHOUT U-BRACKET
57	2	ME29-1691	WELDMENT - BRACKET, FRAME MOUNT SUPPORT "U", TANKS LOWERED 2"
58	1	MF13-1102-N	RECEPTACLE - HD BUS
59	1	MF13-1103-N	RECEPTACLE - NGV1 FILL (INCLUDES DUST CAP) - (#6 SAE O-RING FEMALE)
60	1	MF17-1004	FITTING - UNION - STRAIGHT - #6 ORING X # 6 ORING (9/16"-18)
61	1	MF17-1007	DEFUEL NIPPLE - 316SS -6 SAE CNG
62	1	MF17-1013	ELBOW - 90° 1/2" STANDARD O-RING X 1/2" ORFS (O-RING FACE SEAL)
63	1	MF17-1014	ADAPTER - STRAIGHT - #6 ORING BOSS X #8 ORFS
64	8	MF17-1015	ADAPTER - STRAIGHT - #8 ORING BOSS X #8 ORFS
65	3	MF17-1016	PLUG - #8 ORING BOSS
66	1	MF17-1018	ADAPTER - BULKHEAD - STRAIGHT - #6 ORFS X #6 ORING BOSS
67	1	MF17-1019	ADAPTER - 90° ELBOW - #6 ORING BOSS X #6 ORFS
68	2	MF17-1024	FITTING - 90° ELBOW-6 ORFS MALE X -6 ORFS FEMALE SWIVEL
69	1	MF17-1025	FITTING - TEE - SWIVEL RUN -6 FEMALE SWIVEL X-6X-6 ORFS
70	1	MF17-1031	VALVE - 2 WAY, -6 ORFS
71	1	MF17-1104-N	TEE-BRANCH SWIVEL NUT, 3/8" ORFS X 3/8" ORFS X 3/8" ORFS SWIVEL
72	3	MF17-1141-N	ADAPTER - STRAIGHT #6 (3/8") ORFS X #6 (3/8") TUBE

ITEM	QTY	PART NUMBER	DESCRIPTION
73	1	MF17-1142-N	6-4 C5OLO-SS
74	4	MF17-1143-N	FITTING - BULKHEAD, 90° ELBOW - #8 ORFS X #8 ORFS
75	1	MF17-1150-N	ADAPTER - STRAIGHT, 8 ORFS FEMALE SWVL X 6 ORFS
76	1	MF17-1163-N	VALVE - 3 WAY, #6 ORFS X #6 ORFS X 1/4" NPT (RATED FOR 6,000 PSI MIN)
77	1	MF17-1164-N	TEE - GAUGE PORT, ORFS / ORFS Swivel / SAE-ORB
78	2	MF17-1172-N	ADAPTER, STRAIGHT, BRASS 3/8" NPT X 5/8" HOSE BARB
79	1	MF17-1600	ADAPTER - TEE, RUN #8 STANDARD ORING BOSS (MALE) X #8 ORFS (MALE) X #8 ORFS (MALE)
80	1	MF17-1610	PURGE VALVE WITH SS BALL
81	1	MF17-1659	DUST CAP - DEFUEL RECEPTACLE, RUBBER, DIXON
82	2	MF17-1683	ADAPTER, STRAIGHT, BRASS 3/8" NPT X 5/8" HOSE BARB
83	3	MG04-1600	SUPPORT - GAUGE MOUNT
84	1	MG25-1100-N	LP Gauge, Crimped, w/ Logo, 0-160 PSI, 3/8" CENTER TUBE STUB
85	2	MG25-1607	GAUGE, 0-6000 PSI, 2.5" DIAMETER PANEL MOUNT,3/8" TUBE STUB
86	24	MH04-1001	NUT - T-NUT, 5/16"-18, YELLOW ZINC
87	2	MH24-1604	7/8" ID X 1-5/8" OD RUBBER GROMMET, 3/16" PANEL THICKNESS
88	1	MH27-1001-004-20-044-AS-005-SH	BOLT - SOCKET SHOULDER, 5/16" SHOULDER DIA, 5/8" SHOULDER LG
89	4	MH27-1001-004-20-050-ZN-005-SH	BOLT - SOCKET HEAD, 1/4"-20 X 1/2" LONG, GRADE 5, ZINC
90	4	MH27-1001-004-20-075-YZ-008-HH	(VMI) HX CP PL USS 1/4X3/4
91	47	MH27-1001-004-20-100-YZ-008-HH	(VMI) HX CP PL USS 1/4X1
92	8	MH27-1001-004-20-125-YZ-008-HH	(VMI) HX CP PL USS 1/4X1-1/4
93	5	MH27-1001-004-20-225-YZ-008-HH	(VMI) HX CP PL USS 1/4X2-1/4
94	2	MH27-1001-004-20-250-YZ-008-HH	(VMI) HX CP PL USS 1/4X2-1/2
95	15	MH27-1001-005-18-075-YZ-008-HH	(VMI) 5/16-18 x .75 Yellow Zinc Hex Bolt
96	9	MH27-1001-005-18-100-YZ-008-HH	5/16-18 x 1 Yellow Zinc Hex Bolt
97	5	MH27-1001-006-16-100-ZN-005-SQ	BOLT - SQUARE HEAD, 3/8"-16 X 1" LONG, GRADE 5, ZINC
98	75	MH27-1001-006-16-150-YZ-008-HH	(VMI) HCS 3/8-16 x 1.5 YZ8
99	3	MH27-1001-006-16-300-ZN-008-SH	(VMI) BOLT - SOCKET HEAD 3/8"-16 X 3" GR 8 ZINC
100	8	MH27-1001-008-13-150-YZ-008-HH	(VMI) HX CP PL USS 1/2X1-1/2
101	8	MH27-1001-008-13-200-YZ-008-HH	(VMI) 1/2"-13 X 2" HEX HEAD BOLT
102	4	MH27-1001-008-13-750-YZ-008-HH	(RFQ) BOLT - HEX HEAD, 1/2"-13 X 7-1/2"
103	2	MH27-1001-010-11-475-YZ-008-HH	(VMI) HCS 5/8-11 x4.75 YZ8
104	2	MH27-1001-M06-32-075-SS-188-PH	SCREW- BUTTON HEAD, #6-32 X 3/4" LONG, 18-8 STAINLESS STEEL
105	3	MH27-1001-M08-32-063-ZN-008-TC	SCREW- THREAD CUTTING, #8-32 X 5/8" LONG, GRADE 8
106	2	MH27-1002-M08-125-030-YZ-109-HH	(VMI) M8-1.25 x 30 mm GR(10.9) Yellow Zinc Hex Cap Screw
107	20	MH27-1003-004-20-YZ-008-NL	(VMI) NYLON LOCKNU GR.8 1/4-20
108	38	MH27-1003-006-16-YZ-008-NL	(VMI) NYLON LOCNUT GR.8 3/8-16
109	10	MH27-1003-008-13-YZ-008-NL	(VMI) NYLON LOCNUT GR.8 1/2-13
110	2	MH27-1003-M06-32-SS-008-NL	(VMI) Nut-Lock, Nylon 6-32 S/S
111	85	MH27-1004-004-FL-YZ-008	(VMI) WASHER - SAE FLAT GR8 1/4
112	2	MH27-1004-005-BW-SS-188	WASHER - BELLEVILLE, 5/16" X 0.078"
113	26	MH27-1004-005-FL-YZ-008	(VMI) 5/16" x 0.875" Yellow Zinc Washer
114	24	MH27-1004-005-LK-YZ-008	WASHER - LOCK , 5/16" YELLOW ZINC, (GRADE 8)
115	5	MH27-1004-006-FL-SS-316	(VMI) WASHER - 3/8, 316 STAINLES STEEL
116	113	MH27-1004-006-FL-YZ-008	WASHER - FLAT, #6, SS
117	2	MH27-1004-007-FL-NY-XXX	WASHER - NYLON, 7/16" X 3/4" OD
118	30	MH27-1004-008-FL-YZ-008	WASHER - FLAT, #6, SS
119	2	MH27-1004-M06-FL-SS-188	WASHER - FLAT , #6, STAINLESS STEEL GRADE 8
120	23	MH27-1009	NUT - HALF HEX RIVET - 1/4"-20 (GRIP RANGE 0.165-0.260)
121	32	MH27-1010	NUT - HALF HEX RIVET, 3/8"-16, GRADE 5, (GRIP RANGE 0.150" - 0.312")
122	5	MH27-1015	NUT - ACORN, 3/8"-16, CHROME PLATED
123	2	MH27-1020	HUCK PIN - 3/16" ZINC PLATED, 0.062"-0.625" GRIP
124	2	MH27-1021	HUCK COLLAR - 3/16", ZINC COATED
125	26	MH27-1625	(RFQ) RIVNUT - 1/4-20 HEX, SHORT GRIP LENGTH
126	1	MH27-1635	BEARING - SLEEVE, 0.311" ID, 0.438" OD, 0.5" LG, BRONZE
127	1	MH30-1600	SUPPORT TANK LH THREADED END
128	1	MH30-1603	SUPPORT TANK RH REAR THREADED END
129	6	MH37-1600	CABLE TIE - FIR TREE, 50 LB, 8-3/8" LONG
130	3	MJ40-1647	JIG - SHIPPING, T-BONE PLATE, 30 DGE SM
131	2	MK08-1000	ACCESSORIES - HINGE, BUTT
132	2	MK31-1602	PLUG - SHEET METAL, PLASTIC, 2.000" HOLE DIA
133	1	MK32-1001	LATCH KEEPER
134	1	MK32-1002	LATCH HANDLE
135	1	MK32-1608	KNOB - 5 STAR, RED, 1/4"-20 x 1-1/2" LG BOLT
136	1	MP10-1000	ECU
137	1	MP10-1001	FLIM - (FUEL LEVEL INDICATOR MODULE)
138	2	MP15-1000	RELAY, MINI (SPDT) CHANGE-OVER W/BRKT AND RESISTOR
139	1	MP15-1003	TRANSDUCER, PRESSURE
140	1	MP15-1004	SENSOR - PROXIMITY W/ CONNECTOR (A)
141	1	MP92-1631	HARNESS- SIDE-MOUNT W/ VERIFLO
142	1	MR15-1604	(RFQ) REGULATOR - CNG, VERIFLO, SMALL FILTER, LH CONFIGURATION
143	1	MS12-1002	MANIFOLD - SIDE-MOUNT MAIN FUEL (SLIM)
144	1	MS15-1001	VALVE_CARTRIDGE_CHECK

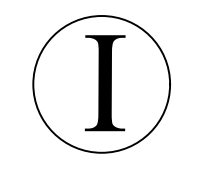
ITEM	QTY	PART NUMBER	DESCRIPTION
145	1	MS19-1600	VALVE-TANK, OMB BETA NEW PLUS
146	1	MT15-1001	MUFFLER - STEEL 1/4" NPT - 105 SCFM 1-3/4 HEIGHT
147	1	MT21-2516L-YELLOW	TUBING - 3/8", 30 DGE SM
148	1	MT21-2517L-YELLOW	TUBING - 3/8", 30 DGE SM
149	1	MT21-2518L-RED	TUBING - 3/8", 30 DGE SM
150	1	MT21-2519L-YELLOW	TUBING - 3/8", 30 DGE SM
151	1	MT21-2520L-ORANGE	TUBING - 3/8" TEE TO 5,000 PSI PRESSURE GAUGE
152	1	MT21-2521L-YELLOW	TUBING - 3/8", 30 DGE SM
153	1	MT21-2522L-N	TUBING - 1/2", 30 DGE SM
154	1	MT21-2523L-ORANGE	TUBING - 1/2", 30 DGE SM
155	1	MT21-2524L-YELLOW	TUBING - 3/8", 30 DGE SM
156	1	MT21-2525L-YELLOW	TUBING - 1/2", 30 DGE SM
157	1	MT21-2526L-YELLOW	TUBING - 1/2", 30 DGE SM
158	1	MT21-2527L-YELLOW	TUBING - 1/2", 30 DGE SM
159	1	MT21-2529L-N	TUBING - 1/2", 30 DGE SM
160	1	MT21-2530L-RED	TUBING - 1/2", 30 DGE SM
161	1	MT21-2544-N	TUBING - 1/2", 30 DGE SM
162	1	MT21-2544-RED	TUBING - 1/2", 30 DGE SM
163	3	MV07-1000	RUBBER BUMPER
164	2	MV29-1000	LOWER ISOLATOR - SIDEMOUNT
165	2	MV29-1001-003	WASHER - SNUBBING
166	2	MV30-1001	UPPER ISOLATOR
167	2	MW18-1000	PRD - OMB YORK
168	1	MX01-1604	STEP - LOWER
169	1	MX01-1605	STEP - UPPER



ISO VIEW  
SCALE 1:10

**ESTIMATED SYSTEM WEIGHT**  
EMPTY: 750 LBS  
FILLED: 950 LBS

PRELIMINARY



DO NOT SCALE THIS PRINT

**CONFIDENTIAL AND TRADE SECRET INFORMATION OF NATURAL GAS FUEL SYSTEMS, INC. dba MOMENTUM FUEL TECHNOLOGIES**  
This document and the information in it is confidential, proprietary and trade secret information of Natural Gas Fuel Systems, Inc. dba Momentum Fuel Technologies on behalf of itself and its subsidiaries and affiliates ("Momentum"). It contains information intended only for the person to whom it is transmitted and may not be disclosed to any third party, in whole or in part, or used to manufacture anything shown or referred to herein, without Momentum's express, written permission. This document must be returned to Momentum on request.

Any form of reproduction, dissemination, copying, disclosure, modification, distribution, and or publication of this document and the information contained herein is strictly prohibited.

This notice must appear on any complete or partial reproduction of this document or the information contained herein.

Copyright © 2020 Natural Gas Fuel Systems, Inc. dba Momentum Fuel Technologies. All rights reserved.

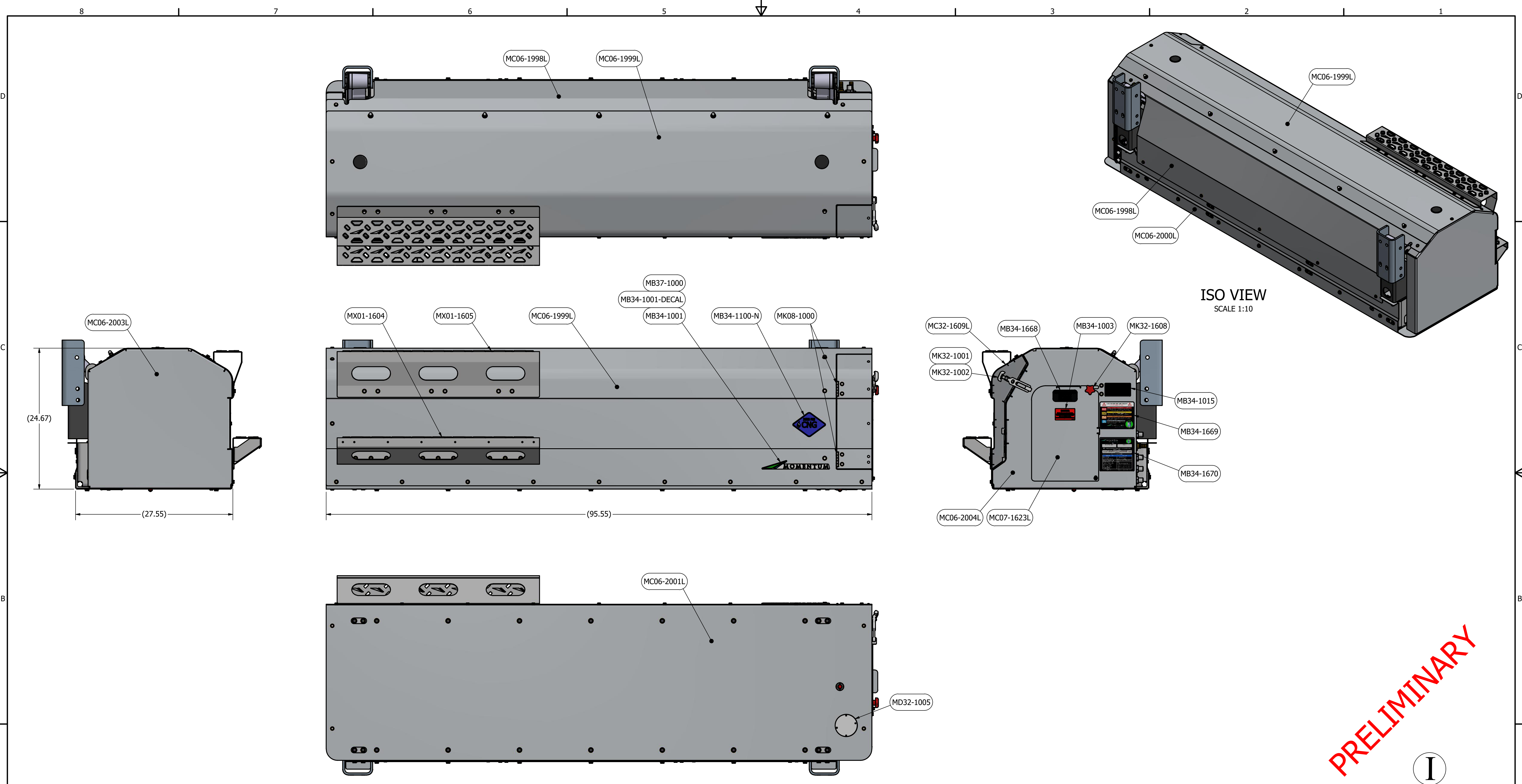
ALL DIMENSION TOLERANCES UNLESS NOTED  
ONE PLACE .X ±.06  
TWO PLACES .XX ±.03  
THREE PLACES .XXX ±.010  
FOUR PLACES .XXXX ±.0010  
ANGLES ±1.0°  
ALL MACHINED SURFACES TO BE 250 RMS UNLESS NOTED.

NOTES:

- FOR INFORMATION NOT CONTAINED IN THIS PRINT REFERENCE THE MATH DATA FOR THIS PART (603-320000-110000014)
- ALL DIMENSIONS ARE IN INCHES

DRAWN	9/28/2020	<b>MOMENTUM FUEL TECHNOLOGIES</b> 1051 Republic Drive, Suite 200 Roanoke, TX 76262	TITLE
CHECKED			SIDE MOUNT - 32 DGE, LH, NO FMM, STEPS
QA			
MFG			
APPROVED			
Part Mass		SIZE	DWG NO
N/A		D	603-320000-110000014
		SCALE	REV





PRELIMINARY

I

DO NOT SCALE THIS PRINT

**CONFIDENTIAL AND TRADE SECRET INFORMATION OF NATURAL GAS FUEL SYSTEMS, INC. dba MOMENTUM FUEL TECHNOLOGIES**  
 This document and the information in it is confidential, proprietary and trade secret information of Natural Gas Fuel Systems, Inc. dba Momentum Fuel Technologies on behalf of itself and its subsidiaries and affiliates ("Momentum"). It contains information intended only for the person to whom it is transmitted and may not be disclosed to any third party, in whole or in part, or used to manufacture anything shown or referred to herein, without Momentum's express, written permission. This document must be returned to Momentum on request.

Any form of reproduction, dissemination, copying, disclosure, modification, distribution, and or publication of this document and the information contained herein is strictly prohibited.

This notice must appear on any complete or partial reproduction of this document or the information contained herein.

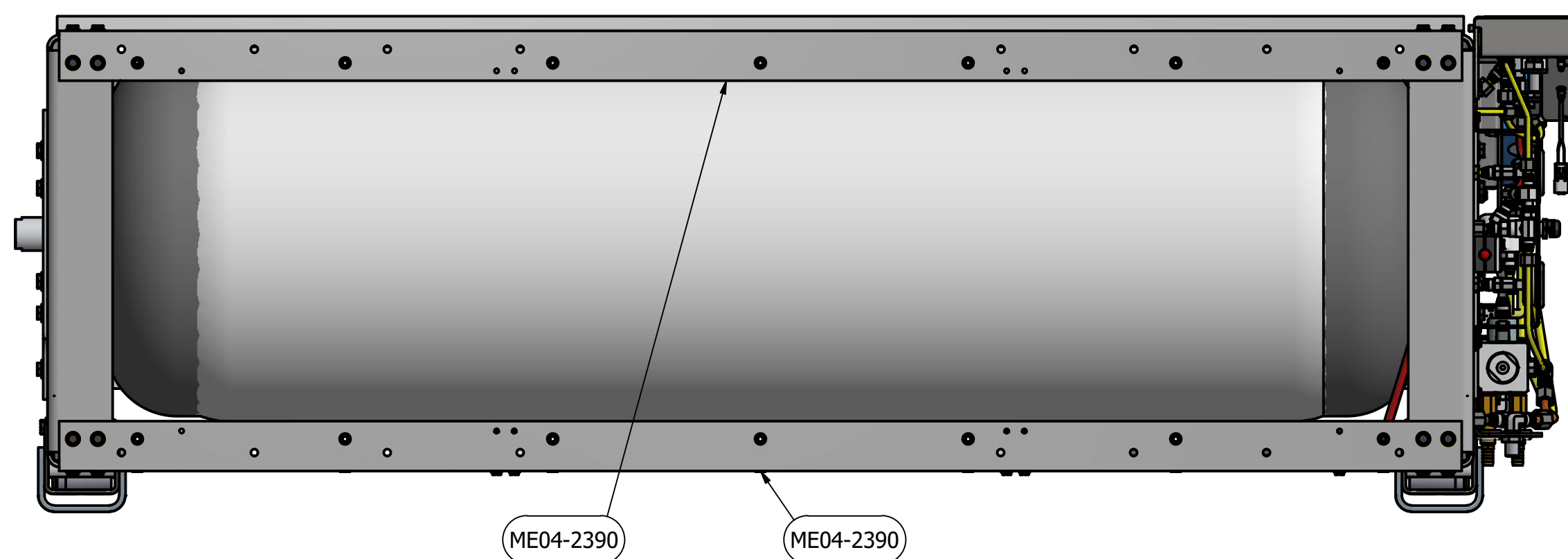
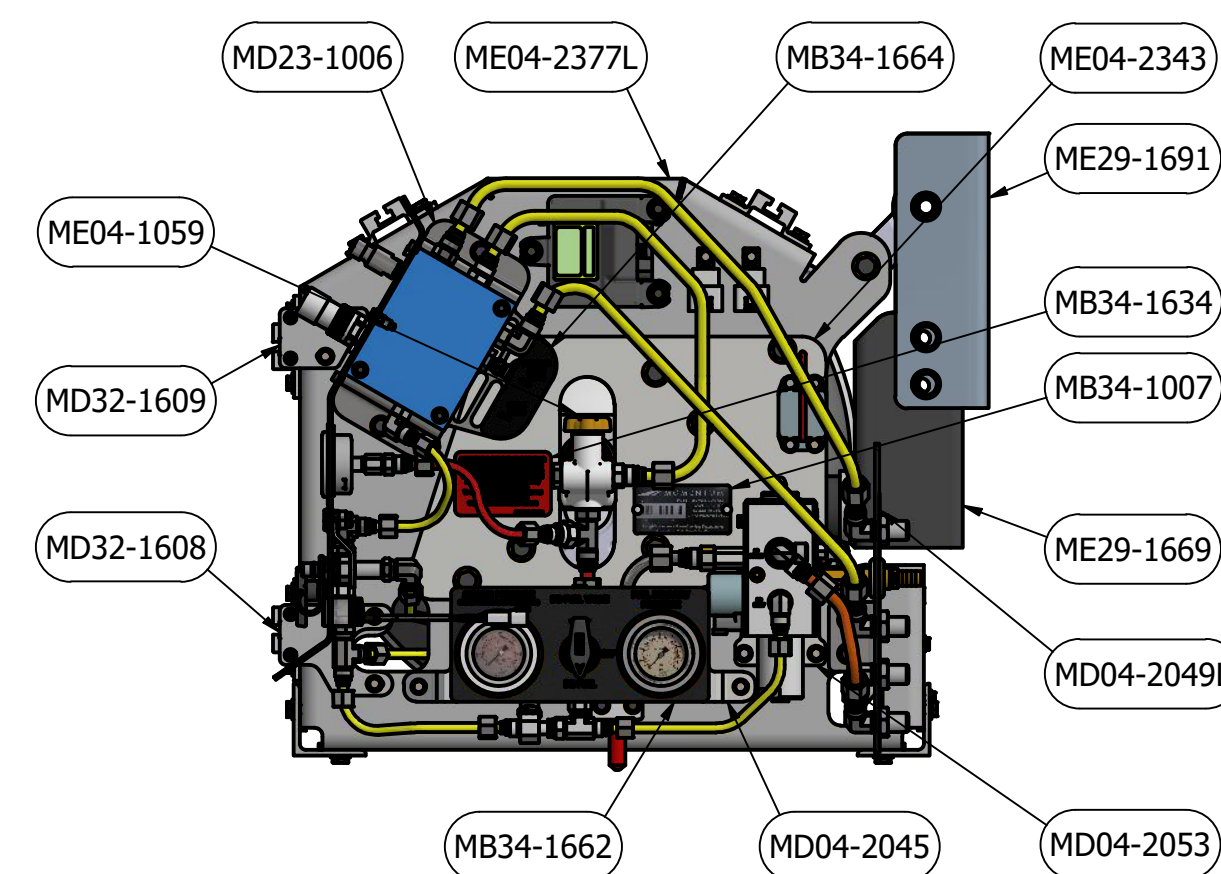
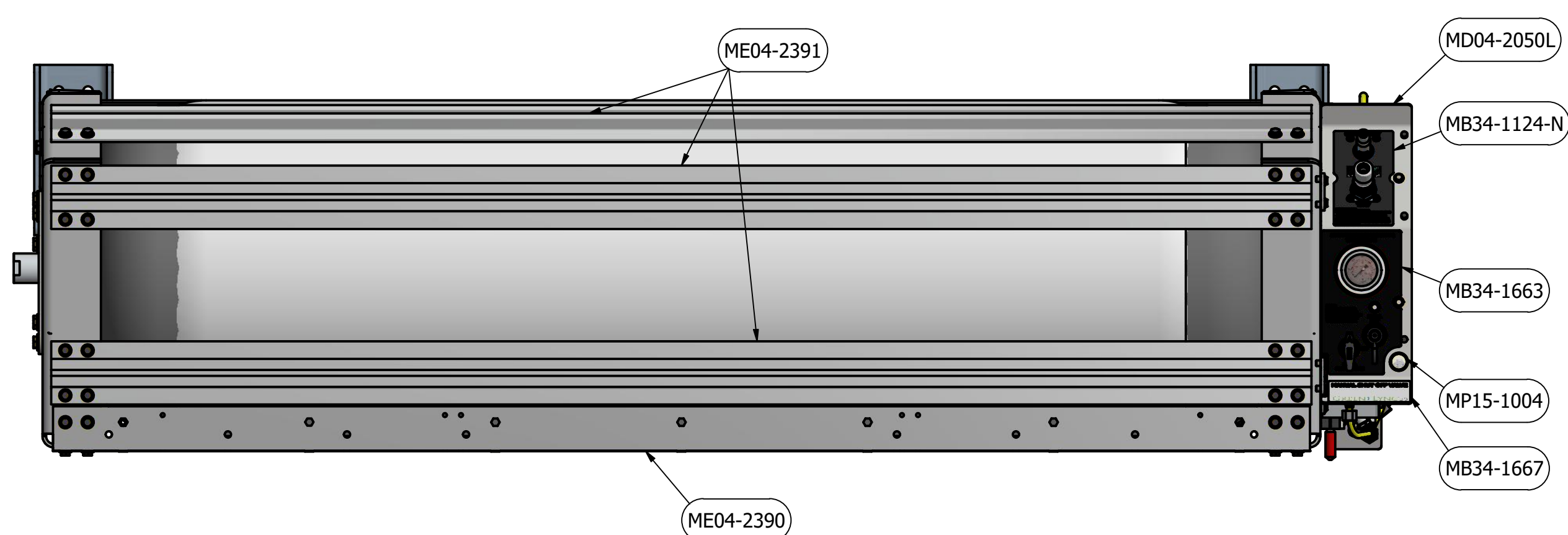
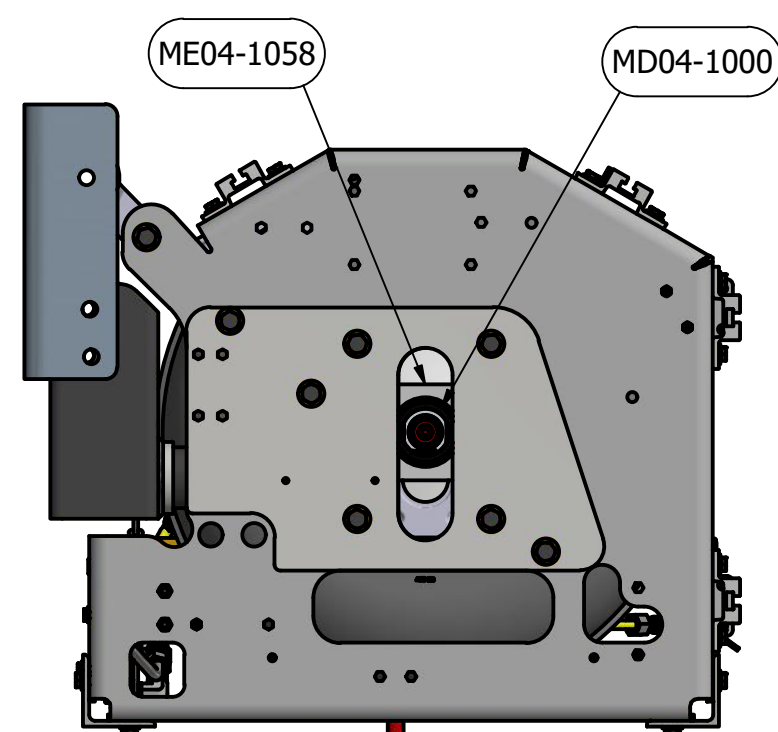
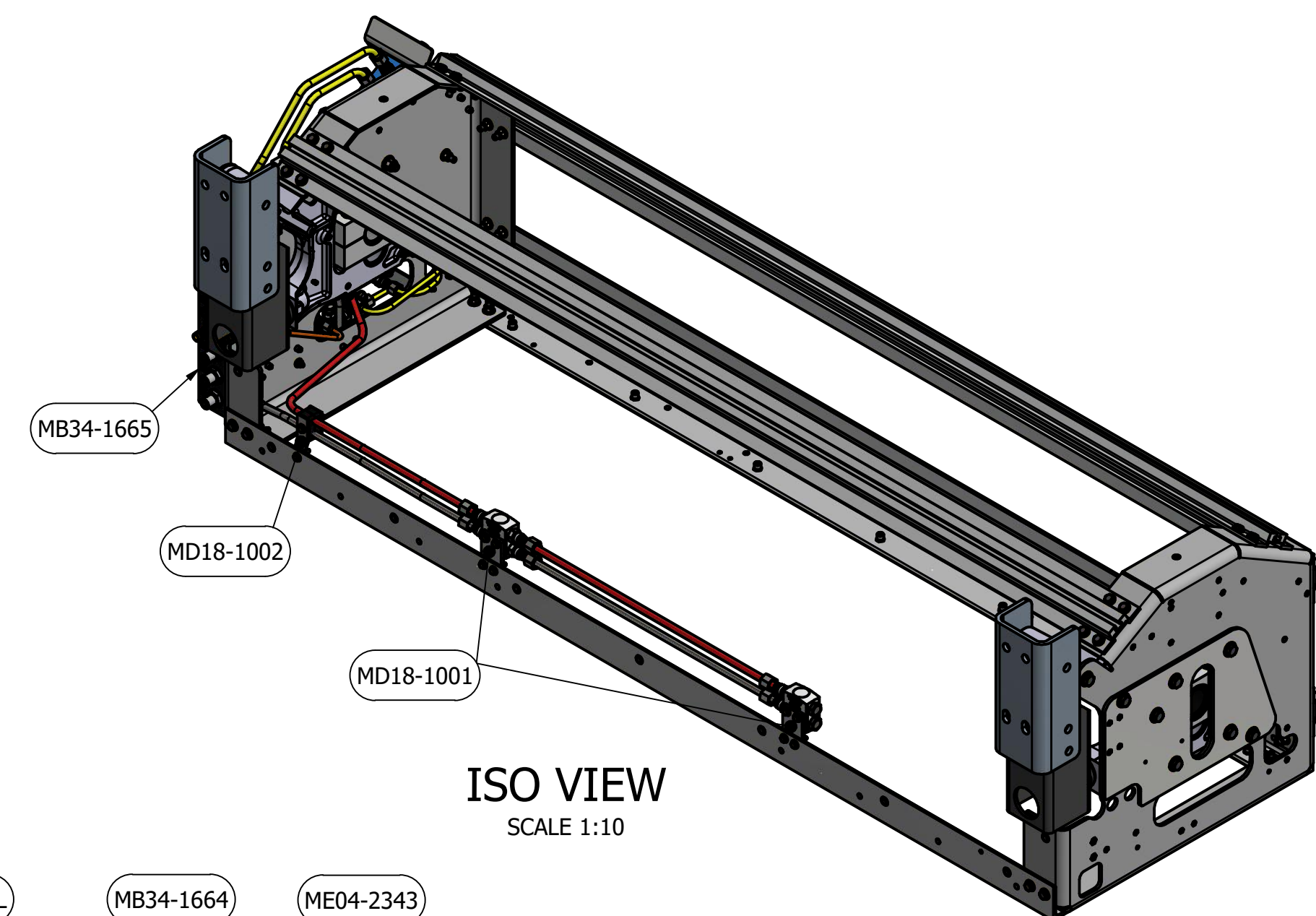
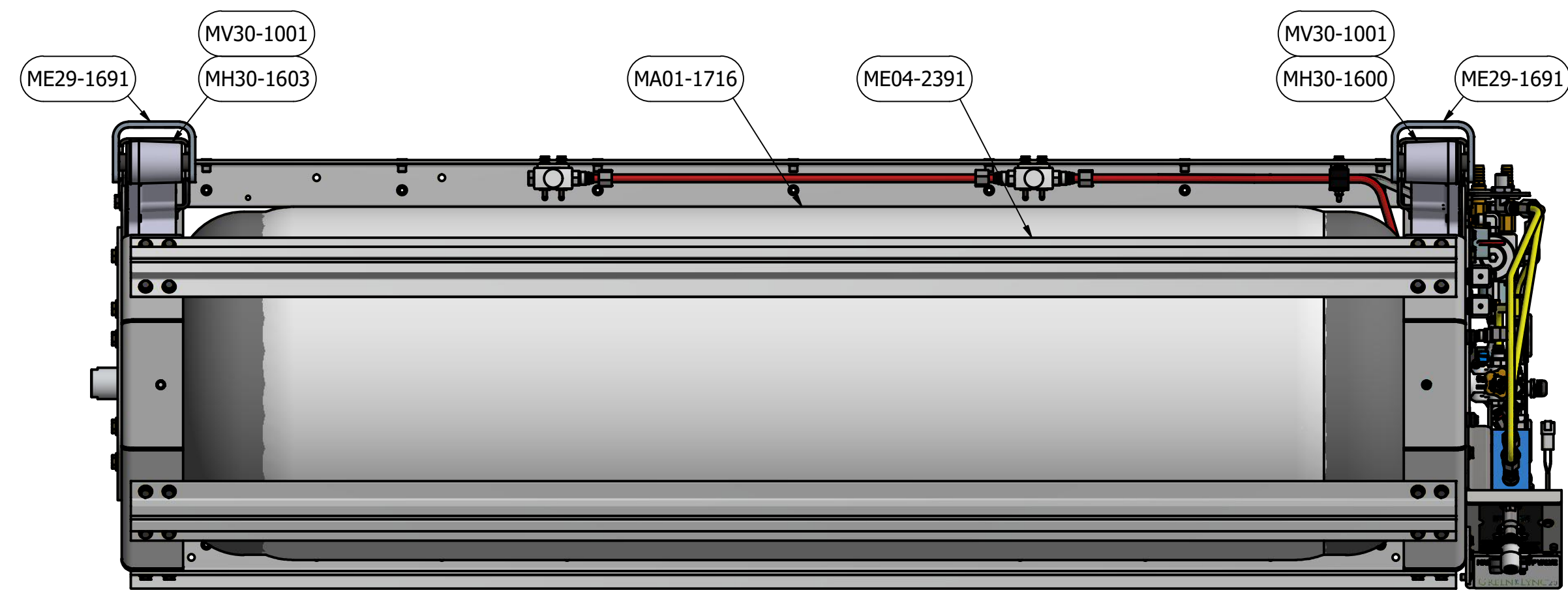
Copyright © 2020 Natural Gas Fuel Systems, Inc. dba Momentum Fuel Technologies. All rights reserved.

ALL DIMENSION TOLERANCES UNLESS NOTED  
 ONE PLACE .X ±.06  
 TWO PLACES .XX ±.03  
 THREE PLACES .XXX ±.010  
 FOUR PLACES .XXXX ±.0010  
 ANGLES ±1.0°  
 ALL MACHINED SURFACES TO BE 250 RMS UNLESS NOTED.

NOTES:  
 1) FOR INFORMATION NOT CONTAINED IN THIS PRINT REFERENCE THE MATH DATA FOR THIS PART (603-320000-110000014)  
 2) ALL DIMENSIONS ARE IN INCHES

DRAWN	KSA	9/28/2020	<b>MOMENTUM FUEL TECHNOLOGIES</b> 1051 Republic Drive, Suite 200 Roanoke, TX 76262	
CHECKED			TITLE	
QA			SIDE MOUNT - 32 DGE, LH, NO FMM, STEPS	
MFG			SIZE	DWG NO
APPROVED			D	603-320000-110000014
Part Mass	N/A		SCALE	REV
				1





**PRELIMINARY**

**I**

DO NOT SCALE THIS PRINT

**CONFIDENTIAL AND TRADE SECRET INFORMATION OF NATURAL GAS FUEL SYSTEMS, INC. dba MOMENTUM FUEL TECHNOLOGIES**  
 This document and the information in it is confidential, proprietary and trade secret information of Natural Gas Fuel Systems, Inc. dba Momentum Fuel Technologies on behalf of itself and its subsidiaries and affiliates ("Momentum"). It contains information intended only for the person to whom it is transmitted and may not be disclosed to any third party, in whole or in part, or used to manufacture anything shown or referred to herein, without Momentum's express, written permission. This document must be returned to Momentum on request.

Any form of reproduction, dissemination, copying, disclosure, modification, distribution, and or publication of this document and the information contained herein is strictly prohibited.

This notice must appear on any complete or partial reproduction of this document or the information contained herein.

Copyright © 2020 Natural Gas Fuel Systems, Inc. dba Momentum Fuel Technologies. All rights reserved.

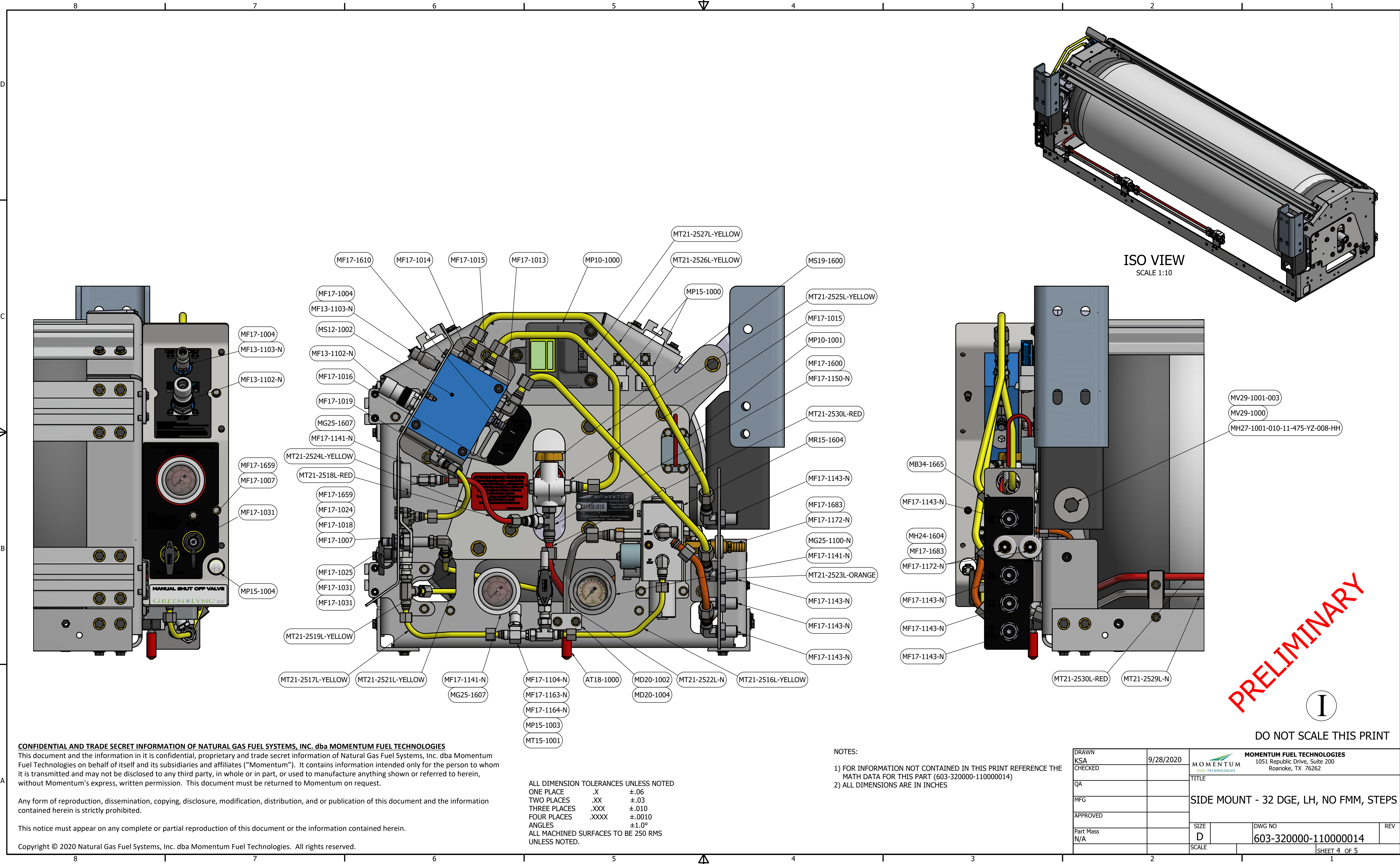
ALL DIMENSION TOLERANCES UNLESS NOTED  
 ONE PLACE .X ±.06  
 TWO PLACES .XX ±.03  
 THREE PLACES .XXX ±.010  
 FOUR PLACES .XXXX ±.0010  
 ANGLES ±1.0°  
 ALL MACHINED SURFACES TO BE 250 RMS UNLESS NOTED.

NOTES:

- 1) FOR INFORMATION NOT CONTAINED IN THIS PRINT REFERENCE THE MATH DATA FOR THIS PART (603-320000-110000014)
- 2) ALL DIMENSIONS ARE IN INCHES

DRAWN	KSA	9/28/2020	<b>MOMENTUM FUEL TECHNOLOGIES</b> 1051 Republic Drive, Suite 200 Roanoke, TX 76262	
CHECKED			TITLE	
QA			SIDE MOUNT - 32 DGE, LH, NO FMM, STEPS	
MFG			SIZE	DWG NO
APPROVED			D	603-320000-110000014
Part Mass	N/A		SCALE	REV





ISO VIEW  
SCALE 1:10

PRELIMINARY

I

DO NOT SCALE THIS PRINT

**CONFIDENTIAL AND TRADE SECRET INFORMATION OF NATURAL GAS FUEL SYSTEMS, INC. dba MOMENTUM FUEL TECHNOLOGIES**  
 This document and the information in it is confidential, proprietary and trade secret information of Natural Gas Fuel Systems, Inc. dba Momentum Fuel Technologies on behalf of itself and its subsidiaries and affiliates ("Momentum"). It contains information intended only for the person to whom it is transmitted and may not be disclosed to any third party, in whole or in part, or used to manufacture anything shown or referred to herein, without Momentum's express, written permission. This document must be returned to Momentum on request.

Any form of reproduction, dissemination, copying, disclosure, modification, distribution, and or publication of this document and the information contained herein is strictly prohibited.

This notice must appear on any complete or partial reproduction of this document or the information contained herein.

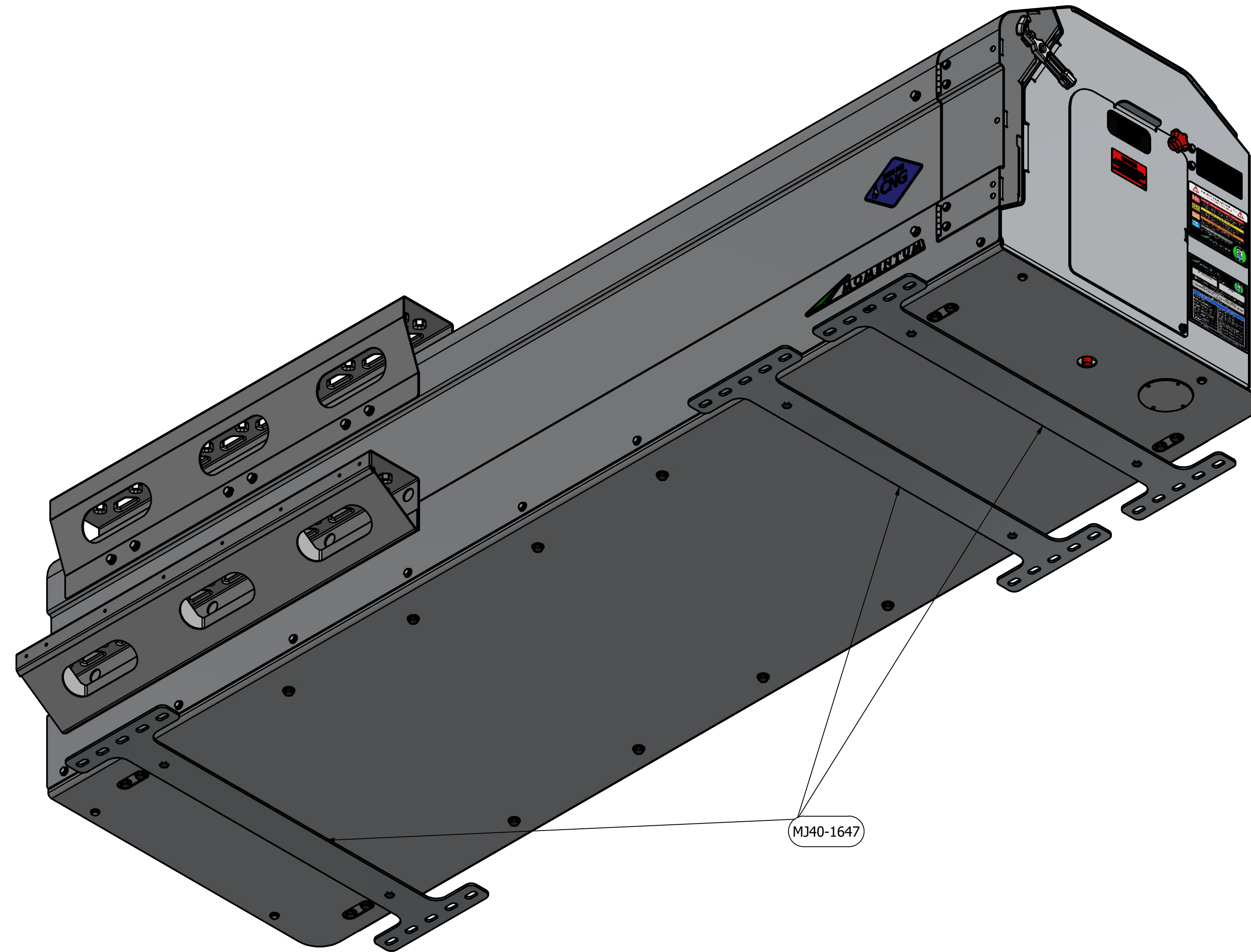
Copyright © 2020 Natural Gas Fuel Systems, Inc. dba Momentum Fuel Technologies. All rights reserved.

ALL DIMENSION TOLERANCES UNLESS NOTED  
 ONE PLACE .X ±.06  
 TWO PLACES .XX ±.03  
 THREE PLACES .XXX ±.010  
 FOUR PLACES .XXXX ±.0010  
 ANGLES ±1.0°  
 ALL MACHINED SURFACES TO BE 250 RMS UNLESS NOTED.

NOTES:  
 1) FOR INFORMATION NOT CONTAINED IN THIS PRINT REFERENCE THE MATH DATA FOR THIS PART (603-320000-110000014)  
 2) ALL DIMENSIONS ARE IN INCHES

DRAWN	KSA	9/28/2020	<b>MOMENTUM FUEL TECHNOLOGIES</b> 1051 Republic Drive, Suite 200 Roanoke, TX 76262	
CHECKED				
QA			TITLE	
MFG			SIDE MOUNT - 32 DGE, LH, NO FMM, STEPS	
APPROVED			SIZE	DWG NO
Part Mass	N/A		D	603-320000-110000014
			SCALE	SHEET 4 OF 5





# SHIPPING JIG

PRELIMINARY

I

DO NOT SCALE THIS PRINT

**CONFIDENTIAL AND TRADE SECRET INFORMATION OF NATURAL GAS FUEL SYSTEMS, INC. dba MOMENTUM FUEL TECHNOLOGIES**

This document and the information in it is confidential, proprietary and trade secret information of Natural Gas Fuel Systems, Inc. dba Momentum Fuel Technologies on behalf of itself and its subsidiaries and affiliates ("Momentum"). It contains information intended only for the person to whom it is transmitted and may not be disclosed to any third party, in whole or in part, or used to manufacture anything shown or referred to herein, without Momentum's express, written permission. This document must be returned to Momentum on request.

Any form of reproduction, dissemination, copying, disclosure, modification, distribution, and or publication of this document and the information contained herein is strictly prohibited.

This notice must appear on any complete or partial reproduction of this document or the information contained herein.

Copyright © 2020 Natural Gas Fuel Systems, Inc. dba Momentum Fuel Technologies. All rights reserved.

ALL DIMENSION TOLERANCES UNLESS NOTED  
 ONE PLACE .X ±.06  
 TWO PLACES .XX ±.03  
 THREE PLACES .XXX ±.010  
 FOUR PLACES .XXXX ±.0010  
 ANGLES ±1.0°  
 ALL MACHINED SURFACES TO BE 250 RMS UNLESS NOTED.

NOTES:

- 1) FOR INFORMATION NOT CONTAINED IN THIS PRINT REFERENCE THE MATH DATA FOR THIS PART (603-320000-110000014)
- 2) ALL DIMENSIONS ARE IN INCHES

DRAWN	9/28/2020	<b>MOMENTUM FUEL TECHNOLOGIES</b>	
CHECKED		1051 Republic Drive, Suite 200 Roanoke, TX 76262	
QA		TITLE	
MFG		SIDE MOUNT - 32 DGE, LH, NO FMM, STEPS	
APPROVED		SIZE	DWG NO
Part Mass		D	603-320000-110000014
N/A		SCALE	REV
			SHEET 5 OF 5