

PARTS LIST			
ITEM	QTY	PART NUMBER	DESCRIPTION
1	1	MG25-1100-N	LP Gauge, Crimped, w/ Logo
2	1	MG25-1101-N	HP Gauge, Crimped, w/ Logo
3	1	MF17-1163-N	VALVE - 3 WAY, #6 ORFS X #6 ORFS X 1/4" NPT (RATED FOR 6,000 PSI MIN)
4	1	MF17-1031	VALVE - 2 WAY, #6 ORFS
5	1	MF13-1102	RECEPTACLE - HEAVY DUTY FILL OPW
6	1	MF13-1103	RECEPTACLE - NOVI FILL OPW
7	1	MF17-1018	ADAPTER - BULKHEAD - STRAIGHT - #6 ORFS X #6 ORING BOSS
8	1	MF17-1007	DEFUEL NIPPLE - 316SS -6 SAE CNG
9	1	MF17-1004	FITTING - UNION - STRAIGHT - #6 ORING X # 6 ORING (9/16"-18)
10	1	MT15-1001	MUFFLER - STEEL 1/4" NPT - 105 SCFM 1-3/4 HEIGHT
11	2	MF17-1141-N	ADAPTER - STRAIGHT #6 (3/8") ORFS X #6 (3/8") TUBE
12	2	MF17-1185-N	ADAPTER - TEE, RUN #6 STANDARD ORING BOSS (MALE) X #8 ORFS (MALE) X #8 ORFS (MALE)
13	4	MF17-1149-N	ADAPTER - #6 ORFS (MALE) X #6 ORING BOSS (MALE)
14	1	MP15-1100-N	PRESSURE TRANSDUCER WITH TEMPERATURE, 0-3600PSI, .05V-4.5V, -40C TO 125C
15	2	MF17-1186-N	CONNECTOR-MALE, 9/16-18 #6 MALE ORB X 3/8" TUBE
16	1	MF17-1013	ELBOW - 90° 1/2" STANDARD O-RING X 1/2" ORFS (O-RING FACE SEAL)
17	1	MS15-1001	VALVE CARTRIDGE CHECK
18	2	MF17-1019	ADAPTER - 90° ELBOW - #6 ORING BOSS X #6 ORFS
19	10	MH27-1010	RIVNUT 3/8"-16
20	1	MS12-1104-N	MANIFOLD-FRONT FILL, VERTICAL FMM
21	1	MS12-1107-N	MANIFOLD - REAR FUEL, DUAL REMOTE FILL
22	1	MS12-1106-N	MANIFOLD-HIGH PRESSURE, VERTICAL FMM
23	1	MF14-1101-N	#10 ORING BOSS HOLLOW HEX PLUG
24	1	MC06-1206-N	COVER - PANEL, FRONT, VERTICAL FMM
25	1	MC06-1628	COVER - PANEL, BACK, VERTICAL FMM
26	1	MC07-1147-N	COVER - FRONT DOOR, VERTICAL FMM
27	1	MD04-1198-N	BRACKET - COVER BACKING, VERTICAL FMM
28	17	MH27-1009	NUT - HALF HEX RIVET - 1/4"-20 (GRIP RANGE 0.165-0.260)
29	1	MC07-1145-N	COVER - FILTER DOOR, VERTICAL FMM
30	1	MK32-1103-N	PANEL LATCH, MEDIUM, KNURLED HEAD, .138 HOLES, SS
32	1	MD04-1199-N	BRACKET - PROX TARGET, VERTICAL FMM
33	1	MB34-1173-N	DECAL - FMM - STAND ALONE
34	1	MD04-1600	BRACKET - MOUNTING, VERTICAL FMM
35	1	MF17-1187-N	ADAPTER - MALE, 1/2" TUBE SWAGelok x 3/14"-16 #8 ORB MALE
36	41	MH27-1004-004-FL-YZ-008	
37	12	MH27-1003-004-20-YZ-008-NL	NYLON LOCKNU GR.8 1/4-20
38	8	MH27-1001-004-20-375-YZ-008-HH	BOLT - HEX HEAD, 1/4"-20 X 3-3/4" LONG, GRADE 8, YELLOW ZINC
39	17	MH27-1001-004-20-100-YZ-008-HH	BOLT - HEX HEAD, 1/4"-20 X 1" LONG, GRADE 8, YELLOW ZINC
40	6	MH27-1001-006-16-150-YZ-008-HH	BOLT - HEX HEAD, 3/8"-16 X 1-1/2" LONG, GRADE 8, YELLOW ZINC
41	36	MH27-1004-M06-FL-SS-188	#6 F/W S/S .149x.375
42	8	MH27-1001-006-16-100-YZ-008-HH	BOLT - HEX HEAD, 3/8"-16 X 1" LONG, GRADE 8, YELLOW ZINC
43	8	MH27-1003-006-16-YZ-008-NL	
44	2	MH27-1002-M08-125-Q20-YZ-109-HH	M8-1.25 x 20 GR(10.9) Yellow Zinc Hex Cap Screw
45	4	MH27-1001-M06-32-075-SS-188-BH	

PARTS LIST			
ITEM	QTY	PART NUMBER	DESCRIPTION
46	4	MH27-1003-M08-32-SS-008-NL	NUT - NYLON LOCKING, #8-32, STAINLESS STEEL GRADE 8
47	1	MK32-1101-N	LATCH - RECESSED PULL HANDLE, SPRING LOADED
48	1	MC06-1179-N	COVER - BOTTOM, VERTICAL FMM
49	1	MC06-1207-N	COVER - TOP, VERTICAL FMM
50	1	MR15-1101-N	REGULATOR-CNG, PARKER FMO0 VERIFLO LH CONFIGURATION
51	1	MC06-1185-N	SPACER - HINGE, VERTICAL FMM
52	4	MH27-1001-006-16-125-YZ-008-HH	BOLT - HEX HEAD, 3/8"-16 X 1-1/4" LONG, GRADE 8, YELLOW ZINC
53	2	MF17-1024	FITTING - 90° ELBOW-6 ORFS MALE X 6 ORFS FEMALE SWIVEL
54	1	MT21-1497-YELLOW	TUBE-3/8", SHUTOFF VALVE OUTLET TO MANIFOLD, VERT.FMM
55	1	MT21-1498-YELLOW	TUBE-3/8", DEFUEL VALVE COMMON TO DEFUEL COUPLING, VERT.FMM
56	1	MT21-1501-YELLOW	TUBE-3/8", TO TANKS, VERT.FMM
57	1	MT21-1502-YELLOW	TUBE-3/8", TEE TO HP GAUGE, VERT.FMM
58	1	MT21-1505-N	TUBE-1/2", REGULATOR OUTLET TO MANIFOLD, VERT.FMM
59	1	MC06-1186-N	COVER - SIDE, VERTICAL FMM
60	1	MB34-1171-N	DECAL - FMM - STAND ALONE
61	1	MB34-1172-N	DECAL - FMM - STAND ALONE
62	4	MH27-1004-M10-FL-ZN	WASHER - FLAT, #10, ZINC
63	2	MH27-1001-100-32-100-ZN-008-PH	SCREW - MACHINE, PAN HEAD #10-32 X 1" LONG, ZINC
64	2	MH27-1003-M10-24-ZN-002-NL	NUT - NYLON LOCKING, #10-24, ZINC GRADE 2
65	2	MB34-1003	DECAL - DANGER
66	1	MB34-1007	Label - Serial Number Tag
67	1	MB34-1135-N	DECAL - MANUAL SHUTOFF VALVE INSIDE
68	1	MB34-1100-N	DECAL - 3600 PSI CNG
69	1	MB34-1176-N	DECAL - COOLANT IN/COOLANT OUT
70	4	MH27-1001-004-20-275-YZ-008-HH	BOLT - HEX HEAD, 1/4"-20 X 2-3/4" LONG, GRADE 8, YELLOW ZINC
72	1	MC06-1188-N	SPACER - LATCH CATCH, VERTICAL FMM
73	1	MB34-1015	DECAL - FUEL SYSTEM INSPECTOR
74	1	MF14-1004	PLUG - #6 ORING BOSS
76	1	MT21-1510-YELLOW	TUBE-3/8", AUX FILL, VERTICAL FMM
77	1	MT21-1511-N	TUBE-3/8", MANIFOLD TO LP GAUGE, VERTICAL FMM
78	1	MF17-1193-N	FITTING - STRAIGHT #10 ORB X #10 MALE JIC
79	1	MT21-1499-YELLOW	TUBE-3/8", TEE TO SHUTOFF VALVE INLET, VERTICAL FMM
80	1	MT21-1500-YELLOW	TUBE-3/8", MANIFOLD TO REGULATOR VALVE INLET, VERTICAL FMM
81	1	MT21-1504-YELLOW	TUBE-3/8",MANIFOLD TO DEFUEL VALVE INLET, VERTICAL FMM
82	2	MF17-1188-N	ADAPTER - 90° ELBOW 3/8" NPT (MALE) X 5/8" HOSE BARB (MALE)
83	2	MF17-1189-N	BULKHEAD - ANCHOR, 3/8 FNPT X 3/8 FNPT
84	2	MF17-1107-N	ADAPTER - HOSE 3/8" HOSE BARB X 3/8" NPT MALE
85	1	MT22-1001	3/8" Heater Hose Per Foot
86	1	MH24-1601	3/8" ID X 7/8" OD RUBBER GROMMET
88	1	MP15-1000	RELAY, MINI (SPDT) CHANGE-OVER W/BRKT AND RESISTOR
89	1	MP92-1026	Harness- Stand Alone FMM
90	1	MF17-1610	PURGE VALVE WITH SS BALL
193	1	MK08-1000-02-1002	ACCESSORIES - HINGE, BUTT
196	1	MK08-1000	ACCESSORIES - HINGE, BUTT
197	1	MK08-1000-02-1003	ACCESSORIES - HINGE, BUTT
198	1	MN39-1105-N	

NOTES:

- FOR INFORMATION NOT CONTAINED IN THIS PRINT REFERENCE THE MATH DATA FOR THIS PART (MN39-1104-4)
- ALL DIMENSIONS ARE IN INCHES
- PART SHALL BE FREE OF BURRS, FLASH AND SHARP EDGES
- MATERIAL: OR EQUIVALENT
THICKNESS: .XX IN (XX GA)
MINIMUM YIELD STRENGTH: XX KSI
- INITIAL USE:
- PART NUMBER, REV LEVEL, AND SUPPLIER CODE REQUIRED ON ALL PARTS. REFER TO DRAWING FOR SPECIFIC LOCATION, WHERE APPLICABLE. ETCH, STAMP, OR OTHERWISE PERMANENTLY ATTACH REQUIRED INFORMATION ON LARGER PARTS. PERMANENT MARKINGS SHALL BE PLACED IN SUCH A WAY THAT THEY ARE VISIBLE AFTER PART IS COATED OR PAINTED. SMALLER PARTS SHOULD HAVE THE INFORMATION ATTACHED BY THE BEST METHOD POSSIBLE. ALTERNATE MEANS OF ATTACHING INFORMATION MUST BE APPROVED.
- PART SHOWN IS LEFT HAND (LH)
LH PART NUMBER IS XXXX-XXXXL
RH PART NUMBER IS XXXX-XXXXR
(RH PART IS OPPOSITE, MIRROR OF WHAT IS SHOWN)

PRELIMINARY

1

DO NOT SCALE THIS PRINT

CONFIDENTIAL AND TRADE SECRET INFORMATION OF NATURAL GAS FUEL SYSTEMS, INC. dba MOMENTUM FUEL TECHNOLOGIES
This document and the information in it is confidential, proprietary and trade secret information of Natural Gas Fuel Systems, Inc. dba Momentum Fuel Technologies on behalf of itself and its subsidiaries and affiliates ("Momentum"). It contains information intended only for the person to whom it is transmitted and may not be disclosed to any third party, in whole or in part, or used to manufacture anything shown or referred to herein, without Momentum's express, written permission. This document must be returned to Momentum on request.

Any form of reproduction, dissemination, copying, disclosure, modification, distribution, and or publication of this document and the information contained herein is strictly prohibited.

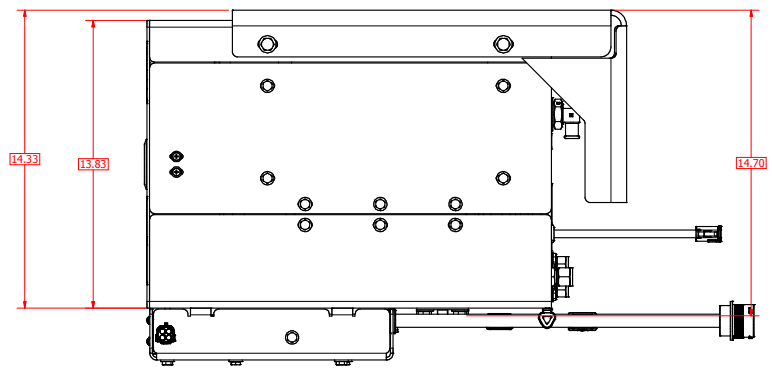
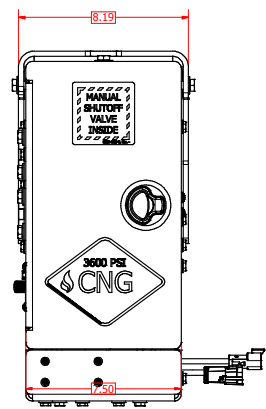
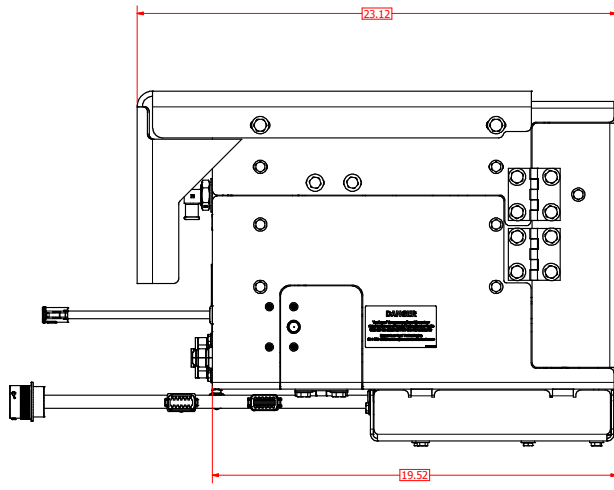
This notice must appear on any complete or partial reproduction of this document or the information contained herein.

Copyright © 2016 Natural Gas Fuel Systems, Inc. dba Momentum Fuel Technologies. All rights reserved.

ALL DIMENSION TOLERANCES UNLESS NOTED
ONE PLACE .X ±.06
TWO PLACES .XX ±.03
THREE PLACES .XXX ±.010
FOUR PLACES .XXXX ±.0010
ANGLES ±1.0°
ALL MACHINED SURFACES TO BE 250 RMS UNLESS NOTED.

DRAWN	brummerr	3/10/2017	M O M E N T U M FUEL TECHNOLOGIES	MOMENTUM FUEL TECHNOLOGIES 1051 Republic Drive, Suite 200 Roanoke, TX 76262
CHECKED				
QA			TITLE ASSY-FMM, VERTICAL, HEIL BASIC VERSION	
MFG			SIZE	DWG NO MN39-1104-N
APPROVED			SCALE	REV
Part Mass				1

8 7 6 5 4 3 2 1



CONFIDENTIAL AND TRADE SECRET INFORMATION OF NATURAL GAS FUEL SYSTEMS, INC. dba MOMENTUM FUEL TECHNOLOGIES
 This document and the information in it is confidential, proprietary and trade secret information of Natural Gas Fuel Systems, Inc. dba Momentum Fuel Technologies on behalf of itself and its subsidiaries and affiliates ("Momentum"). It contains information intended only for the person to whom it is transmitted and may not be disclosed to any third party, in whole or in part, or used to manufacture anything shown or referred to herein, without Momentum's express, written permission. This document must be returned to Momentum on request.

Any form of reproduction, dissemination, copying, disclosure, modification, distribution, and or publication of this document and the information contained herein is strictly prohibited.

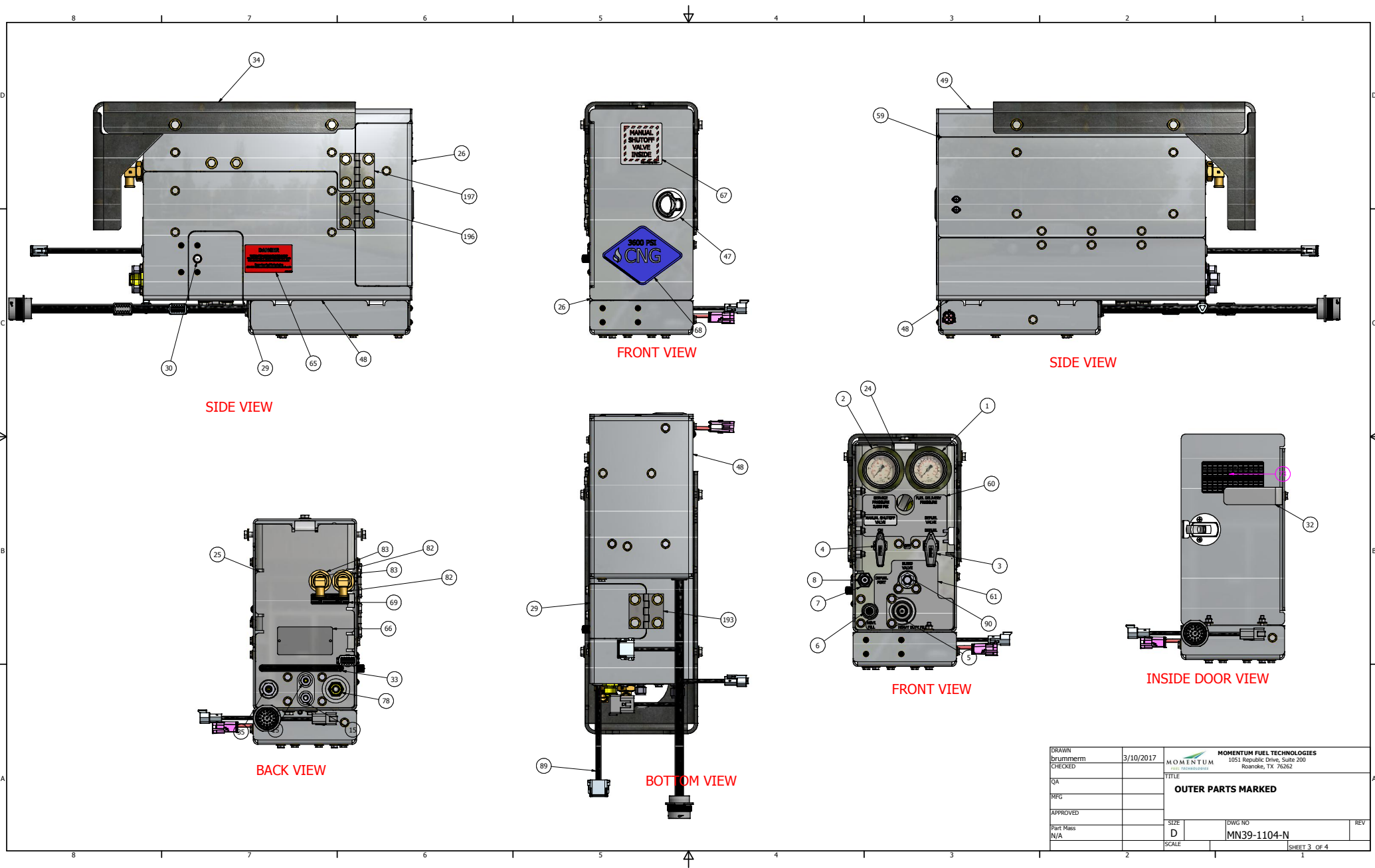
This notice must appear on any complete or partial reproduction of this document or the information contained herein.

Copyright © 2016 Natural Gas Fuel Systems, Inc. dba Momentum Fuel Technologies. All rights reserved.

ALL DIMENSION TOLERANCES UNLESS NOTED
 ONE PLACE .X ±.06
 TWO PLACES .XX ±.03
 THREE PLACES .XXX ±.010
 FOUR PLACES .XXXX ±.0010
 ANGLES ±1.0°
 ALL MACHINED SURFACES TO BE 250 RMS UNLESS NOTED.

DRAWN brummern	3/10/2017	MOMENTUM FUEL TECHNOLOGIES 1051 Republic Drive, Suite 200 Roanoke, TX 76262	
CHECKED		TITLE OVERALL DIMENSIONS	
QA		SIZE	DWG NO
MFG		D	MN39-1104-N
APPROVED		SCALE	REV
Part Mass N/A			1

8 7 6 5 4 3 2 1



SIDE VIEW

FRONT VIEW

SIDE VIEW

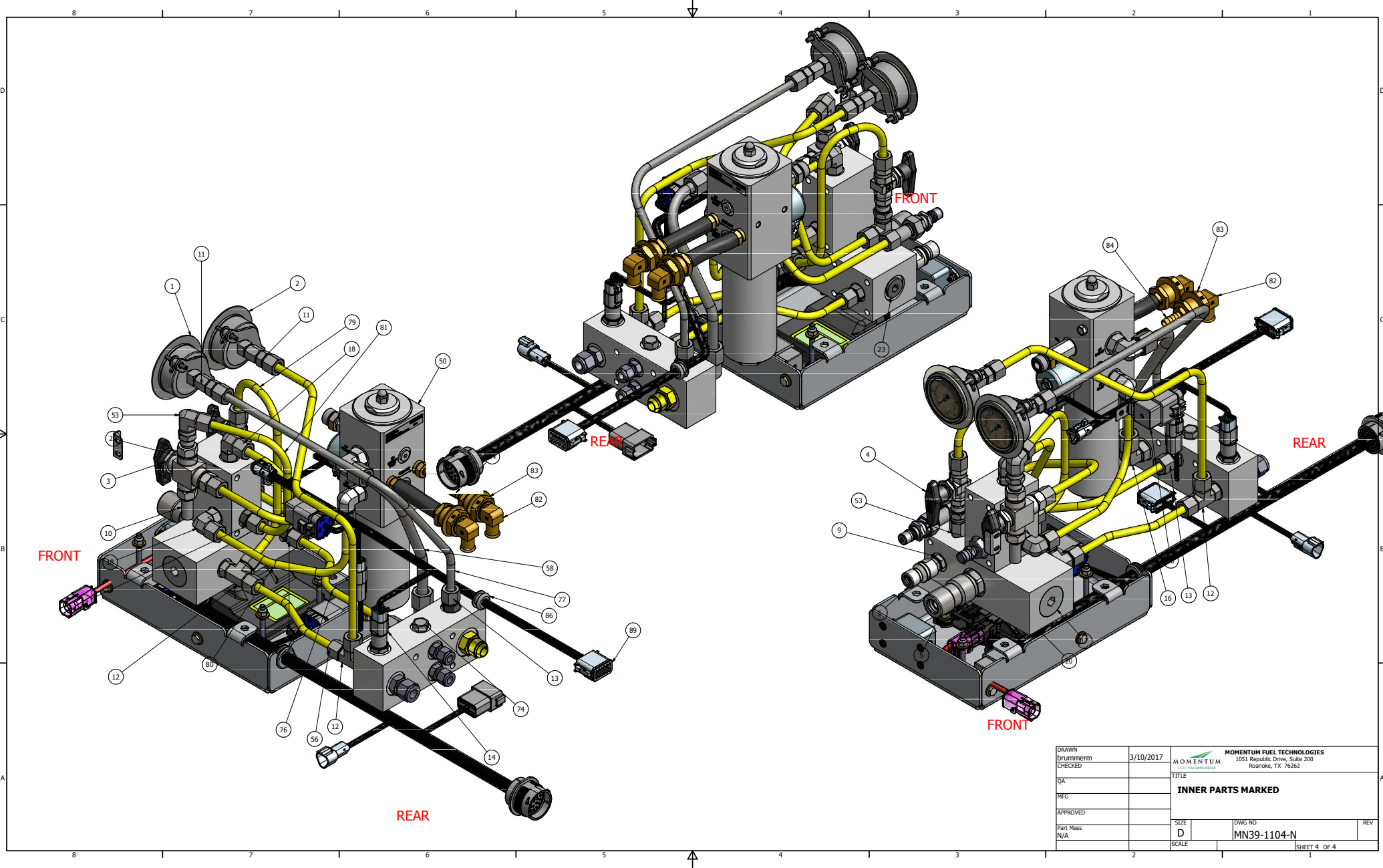
BACK VIEW


BOTTOM VIEW

FRONT VIEW

INSIDE DOOR VIEW

DRAWN brummerm	3/10/2017	MOMENTUM FUEL TECHNOLOGIES 1051 Republic Drive, Suite 200 Roanoke, TX 76262	
CHECKED		TITLE OUTER PARTS MARKED	
QA			
MFG			
APPROVED		SIZE D	DWG NO MN39-1104-N
Part Mass N/A		SCALE	REV
			SHEET 3 OF 4



DRAWN brummern	3/10/2017	 MOMENTUM FUEL TECHNOLOGIES 1051 Republic Drive, Suite 200 Roanoke, TX 76262	
CHECKED		TITLE INNER PARTS MARKED	
QA			
MFG			
APPROVED			
Part Mass N/A		SIZE D	DWG NO MN39-1104-N
		SCALE	REV 1
			SHEET 4 OF 4