

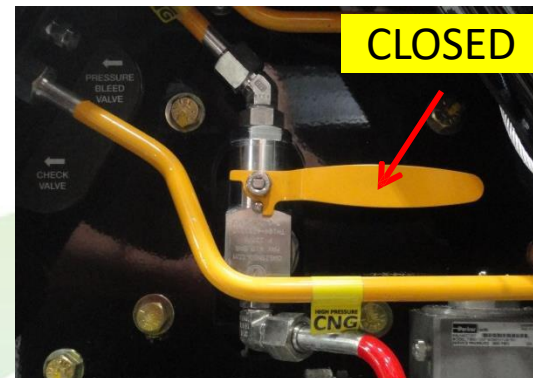
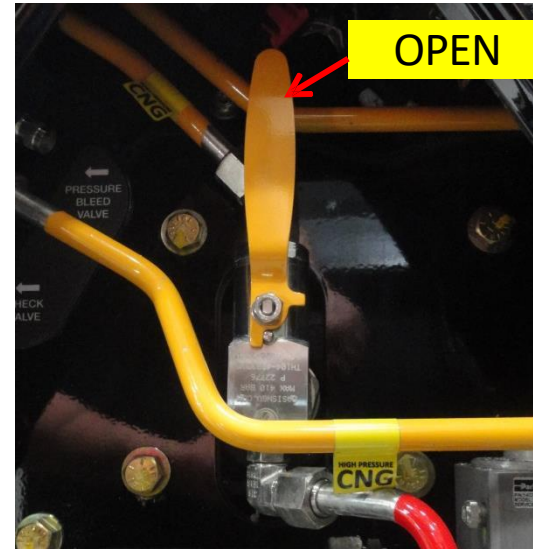
Depressurizing GEN 2 Side Mount Fuel Management Module (FMM)

Depressurizing FMM

Preparing to depressurize the FMM:

If not already done, turn Manual “SHUT OFF VALVE” to the “Closed” position.

Turn the Manual “SHUT OFF VALVE” clockwise ¼ turn to ensure its “CLOSED”.



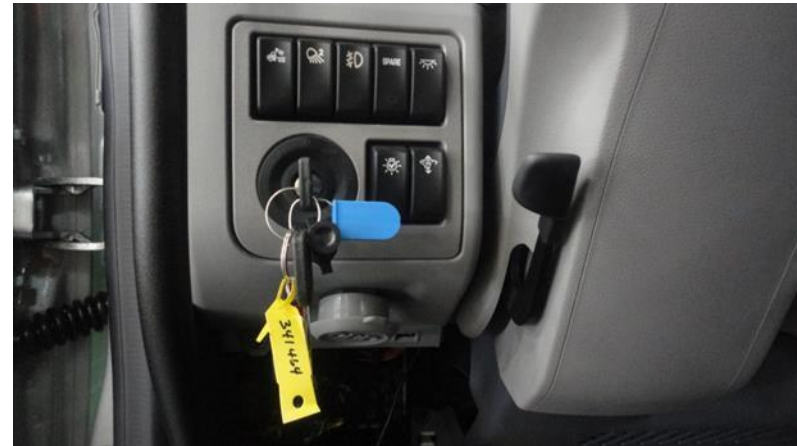
Depressurizing FMM

After the manual shut off valve is CLOSED, try to start the vehicle. (This will depressurize the high and low side of the FMM).

Turn ignition switch to "ON" and allow a few seconds delay for Truck Boot-Up.

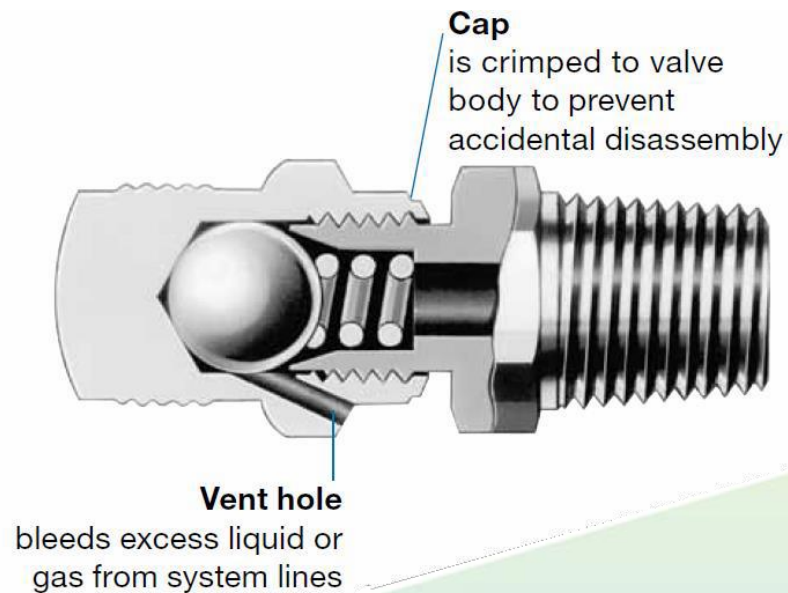
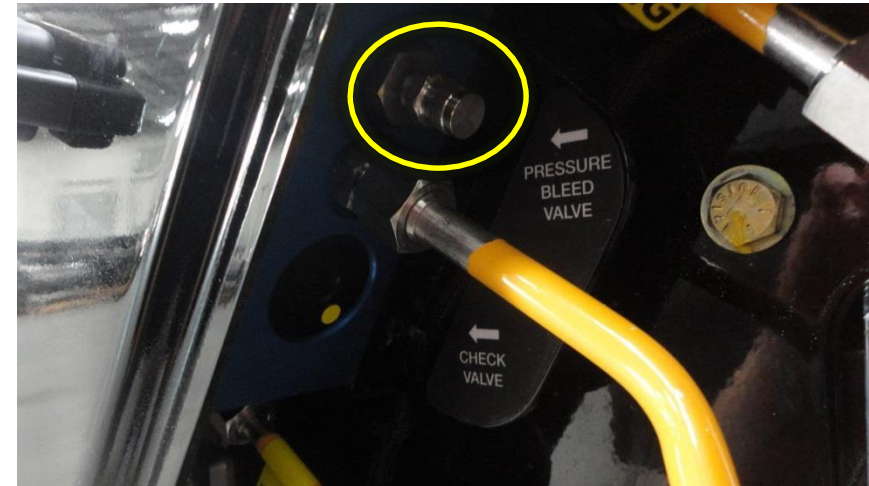
Try to start the vehicle, crank engine for 10 seconds.

If the vehicle starts allow engine to run until out of fuel.



Pressure Bleed Valve

Bleed valves are manual bleed, vent, or drain valve. The knurled cap is permanently assembled to the valve body for safety. One-quarter turn with a wrench from finger-tight obtains leak-tight closure. Snugging with a wrench ensures closure.



Check Valve

Remove check valve using #12 Allen Wrench.

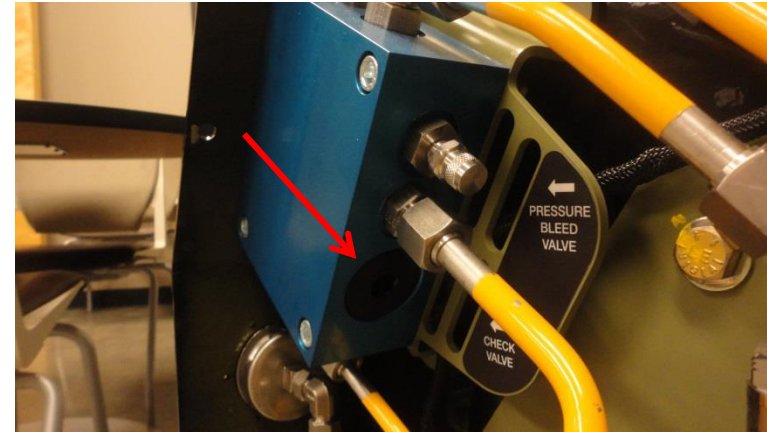
To install check valve inspect mating port to verify that it is clean and free contaminates.

Inspect O-rings make sure it is clean, and free of cracks, tears, or any other damage.

Lube O-rings with Parker O-ring lube or Mineral oil.

Torque check valve to 18 ft/lb.

Leak test the system when repairs are complete.



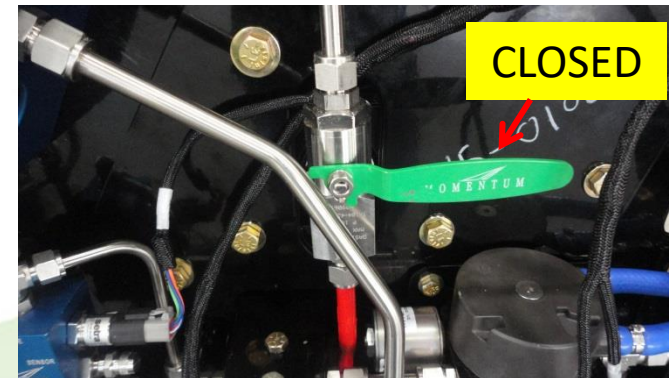
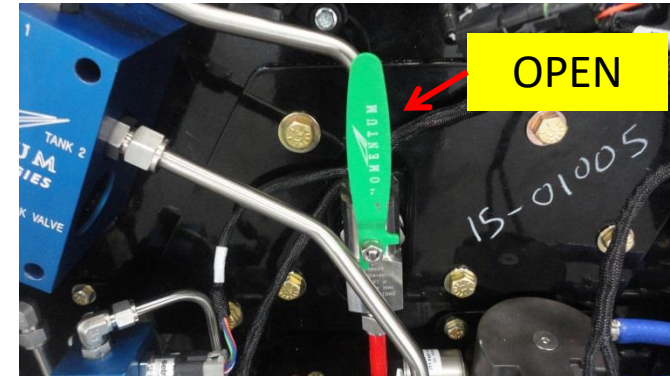
Depressurizing GEN 1 Side Mount Fuel Management Module (FMM)

Depressurizing FMM

Preparing to depressurize the FMM:

If not already done, turn Manual “SHUT OFF VALVE” to the “Closed” position.

Turn the Manual “SHUT OFF VALVE” clockwise $\frac{1}{4}$ turn to ensure its “CLOSED”.



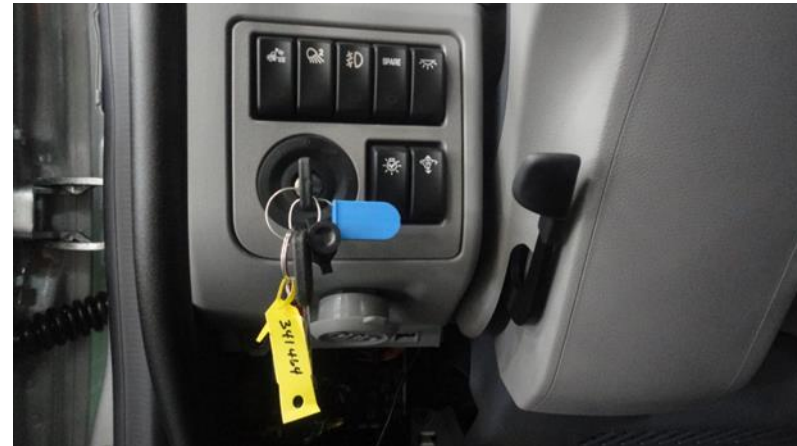
Depressurizing FMM

After the manual shut off valve is CLOSED, try to start the vehicle. (This will depressurize the high and low side of the FMM).

Turn ignition switch to "ON" and allow a few seconds delay for Truck Boot-Up.

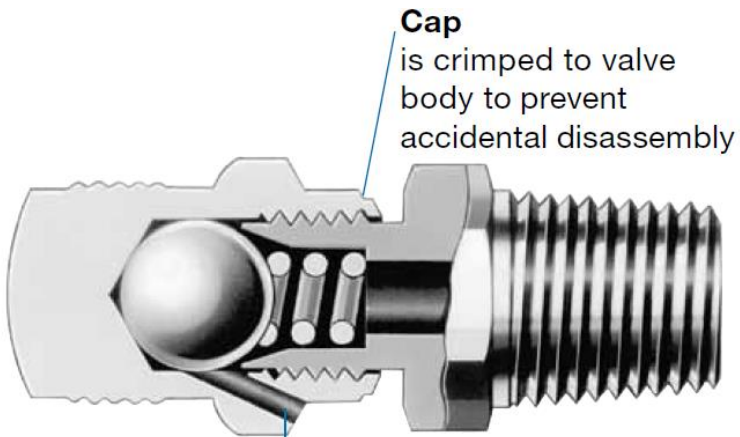
Try to start the vehicle, crank engine for 10 seconds.

If the vehicle starts allow engine to run until out of fuel.



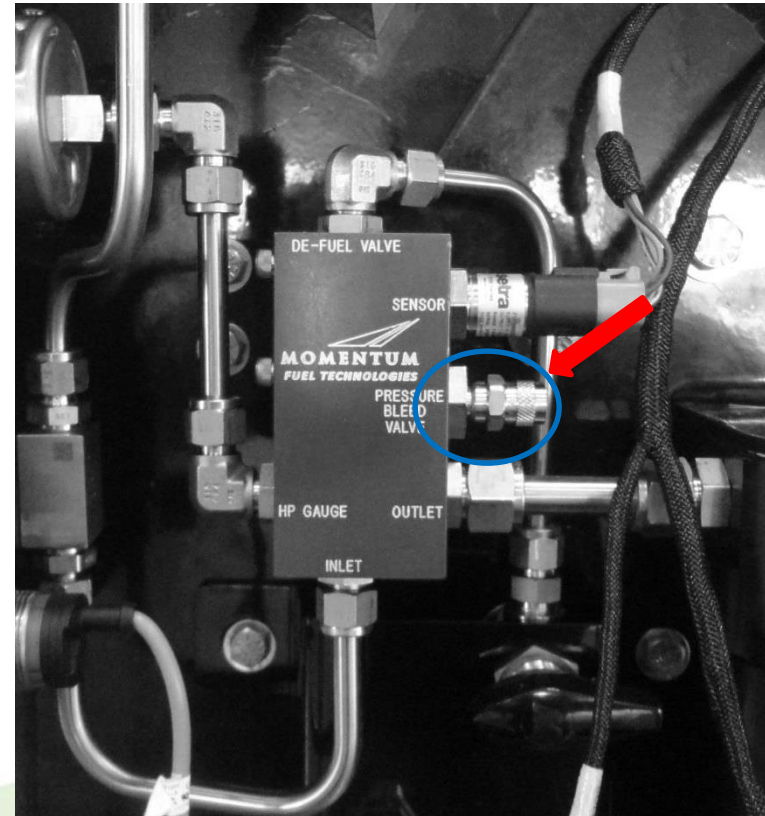
Pressure Bleed Valve

Bleed valves are manual bleed, vent, or drain valve. The knurled cap is permanently assembled to the valve body for safety. One-quarter turn with a wrench from finger-tight obtains leak-tight closure. Snugging with a wrench ensures closure.



Cap
is crimped to valve
body to prevent
accidental disassembly

Vent hole
bleeds excess liquid or
gas from system lines



⚠ DANGER Do NOT attempt to service or remove the fuel cylinder valves or any other fuel system hardware without following depressurization procedures. Failure to do so may result in death or serious injury and property damage.


MOMENTUM

Check Valve

Remove check valve using #12 Allen Wrench.

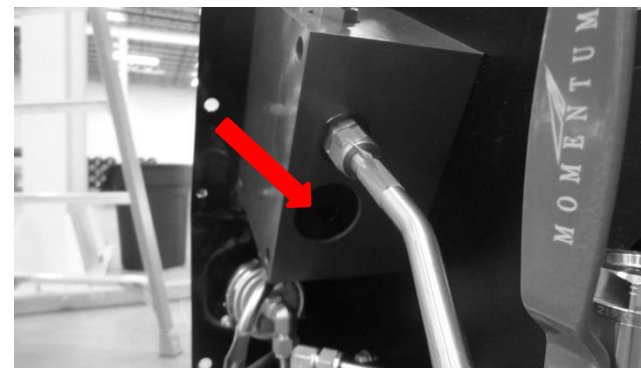
To install check valve inspect mating port to verify that it is clean and free contaminates.

Inspect O-rings make sure it is clean, and free of cracks, tears, or any other damage.

Lube O-rings with Parker O-ring lube or Mineral oil.

Torque check valve to 18 ft/lb.

Leak test the system when repairs are complete.



⚠ DANGER Do NOT attempt to service or remove the fuel cylinder valves or any other fuel system hardware without following depressurization procedures. Failure to do so may result in death or serious injury and property damage.


MOMENTUM

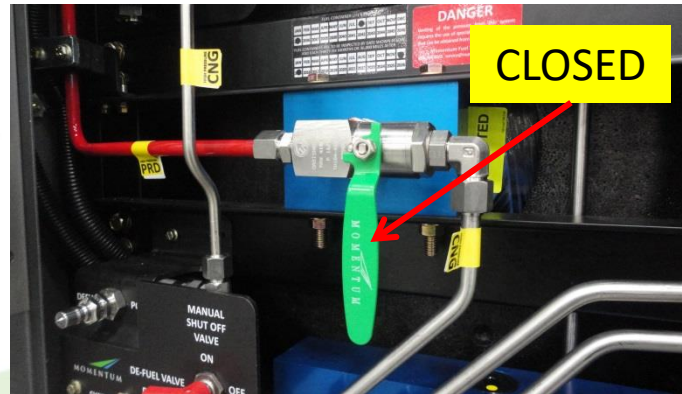
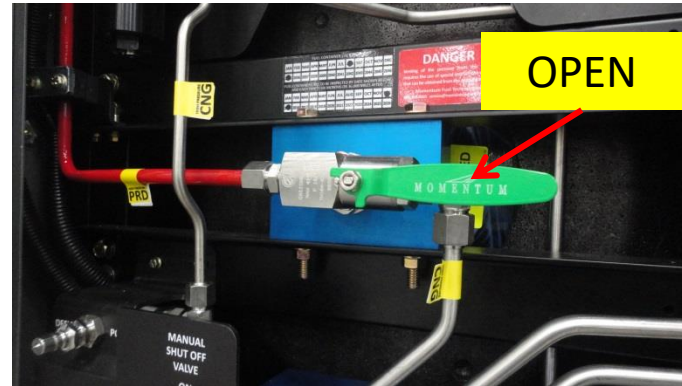
Depressurizing Back of Cab Fuel Management Module (FMM)

Depressurizing FMM

Preparing to depressurize the FMM:

If not already done, turn Manual “SHUT OFF VALVE” to the “Closed” position.

Turn the Manual “SHUT OFF VALVE” clockwise $\frac{1}{4}$ turn to ensure its “CLOSED”.



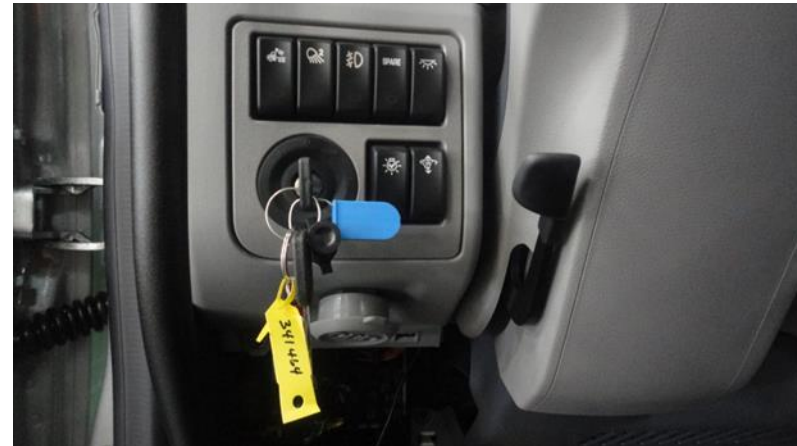
Depressurizing FMM

After the manual shut off valve is CLOSED, try to start the vehicle. (This will depressurize the high and low side of the FMM).

Turn ignition switch to "ON" and allow a few seconds delay for Truck Boot-Up.

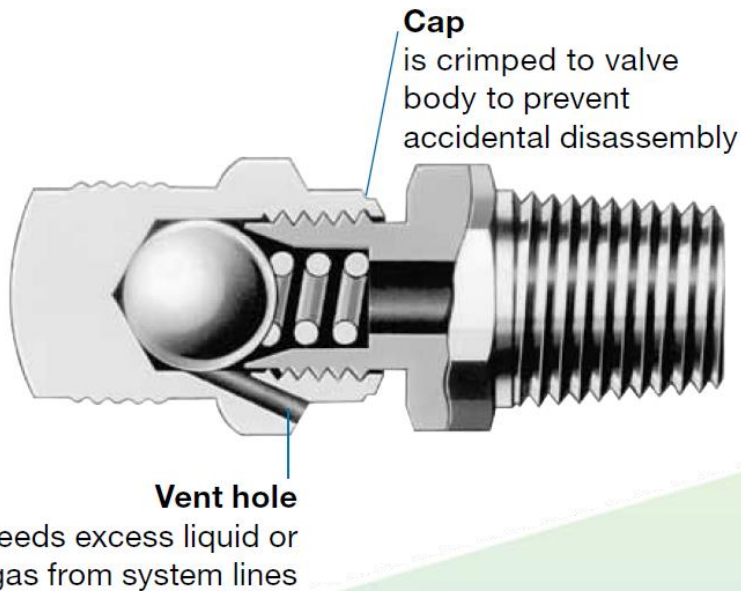
Try to start the vehicle, crank engine for 10 seconds.

If the vehicle starts allow engine to run until out of fuel.



Pressure Bleed Valve

Bleed valves are manual bleed, vent, or drain valve. The knurled cap is permanently assembled to the valve body for safety. One-quarter turn with a wrench from finger-tight obtains leak-tight closure. Snugging with a wrench ensures closure.



⚠ DANGER Do NOT attempt to service or remove the fuel cylinder valves or any other fuel system hardware without following depressurization procedures. Failure to do so may result in death or serious injury and property damage.

Check Valve

Remove check valve using #12 Allen Wrench.

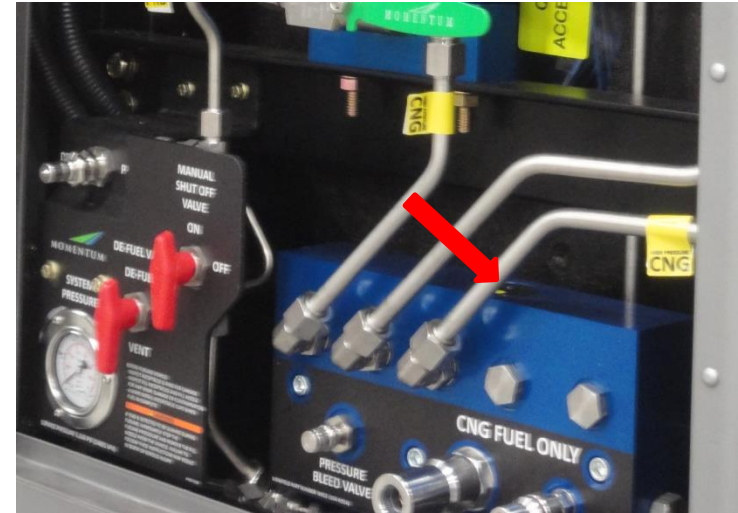
To install check valve inspect mating port to verify that it is clean and free contaminates.

Inspect O-rings make sure it is clean, and free of cracks, tears, or any other damage.

Lube O-rings with Parker O-ring lube or Mineral oil.

Torque check valve to 18 ft/lb.

Leak test the system when repairs are complete.



⚠ DANGER Do NOT attempt to service or remove the fuel cylinder valves or any other fuel system hardware without following depressurization procedures. Failure to do so may result in death or serious injury and property damage.


MOMENTUM