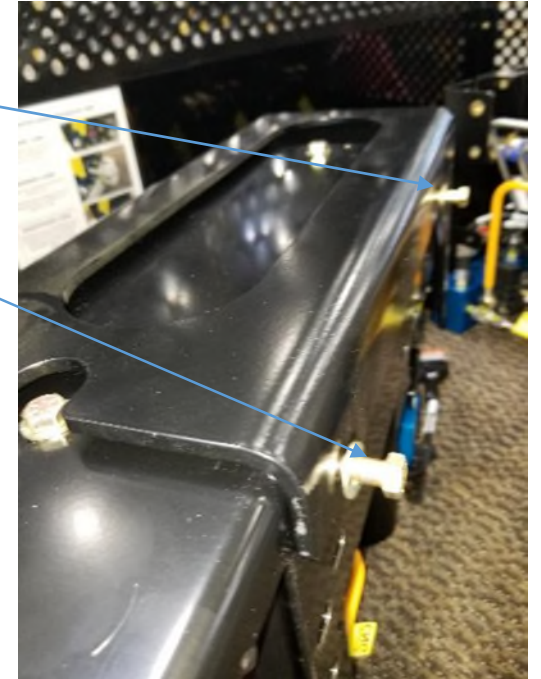




Parker Regulator Outlet Pressure Setting Adjustment

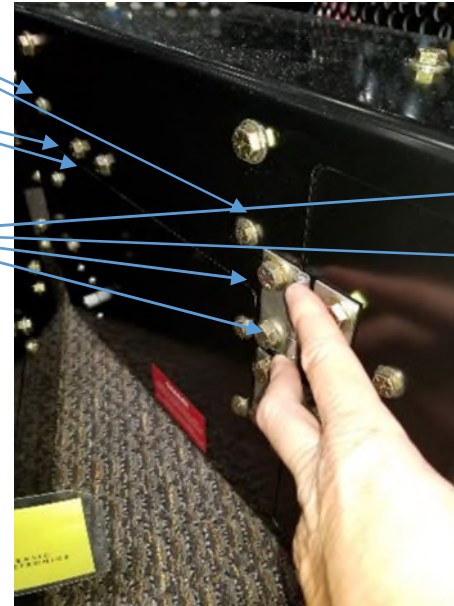
Unbolt FMM from Mounting Bracket

1. Support FMM on hydraulic table or jack.
2. Unbolt for bolts holding FMM to bracket.
3. You do not need to lower the FMM, just remove the 4 bolts.



Remove the Top Cover and Upper Hinge Bolts

1. Remove the (2) 1/4" bolts on the left side of the top cover.
2. Remove the (2) M8 bolts on the left side of the top cover
3. Remove the (2) 3/8" bolts on top of the top cover and the (2) 3/8" bolts holding the back of the upper hinge.
4. Open the door and slide the top cover forward to remove.



Adjust the Regulator

1. Remove the acorn nut from the top of the regulator.
2. Adjust the set screw on top of the regulator using a 1/8" allen wrench.
3. Outlet pressure should be 80 psi at 3600 psi inlet pressure with the engine running at idle for the regulator with the black main body and 110 psi for the regulator with the gray main body. For every 1000 psi below 3600 psi inlet pressure, add 4 psi to the outlet pressure setting. For example: 2600 psi should be 84 psi, 2400 should be 85 psi.



System Pressure (HP Gauge)	Regulator Outlet Pressure (LP Gauge)
3,600 psi	80 psi
3,500 psi	80.4 psi
3,400 psi	80.8 psi
3,300 psi	81.2 psi
3,200 psi	81.6 psi
3,100 psi	82 psi
3,000 psi	82.4 psi
2,900 psi	82.8 psi
2,800 psi	83.2 psi
2,700 psi	83.6 psi
2,600 psi	84 psi
2,500 psi	84.4 psi
2,400 psi	84.8 psi
2,300 psi	85.2 psi
2,200 psi	85.6 psi
2,100 psi	86 psi
2,000 psi	86.4 psi
1,900 psi	86.8 psi
1,800 psi	87.2 psi
1,700 psi	87.6 psi
1,600 psi	88 psi
1,500 psi	87.4 psi
1,400 psi	88.8 psi