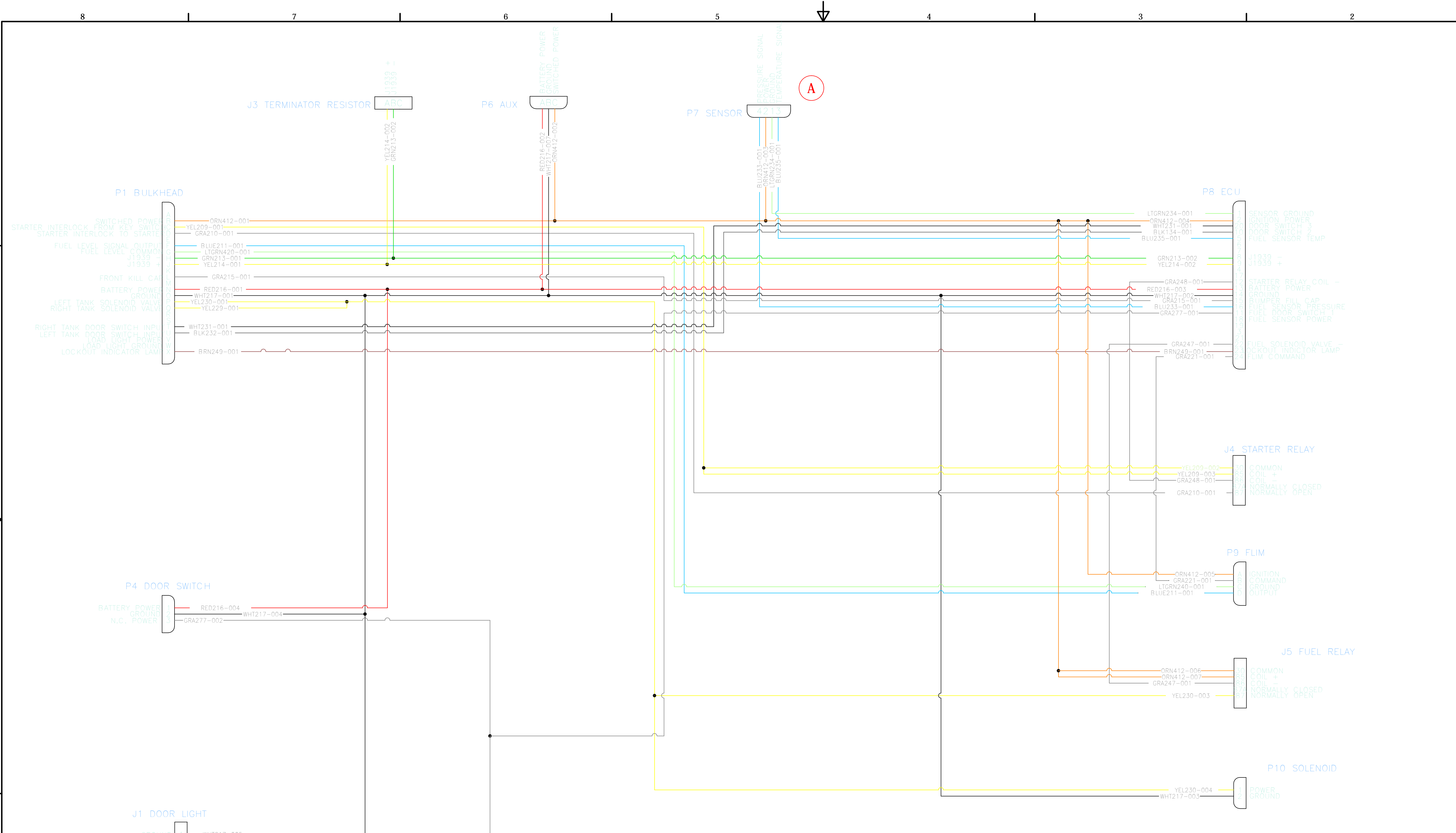


REV	ZONE	DESCRIPTION
A	D5	Pin 4 was 1 Pin 1 was 3 Pin 3 was 4



- NOTES:
 1. REPLACES MP92-1004: HARNESS-SIDEMOUNT.
 2. USED ON ALL SIZES OF SIDE MOUNT SYSTEMS.

CONFIDENTIAL AND TRADE SECRET INFORMATION OF RUSH ENTERPRISES, INC.
 This document and the information in it is confidential, proprietary and trade secret information of Rush Enterprises, Inc. and its subsidiaries ("Rush"). It contains information intended only for the person to whom it is transmitted and may not be disclosed to any third party, in whole or in part, or used to manufacture anything shown or referred to herein, without Rush's express, written permission. This document must be returned to Rush on request.

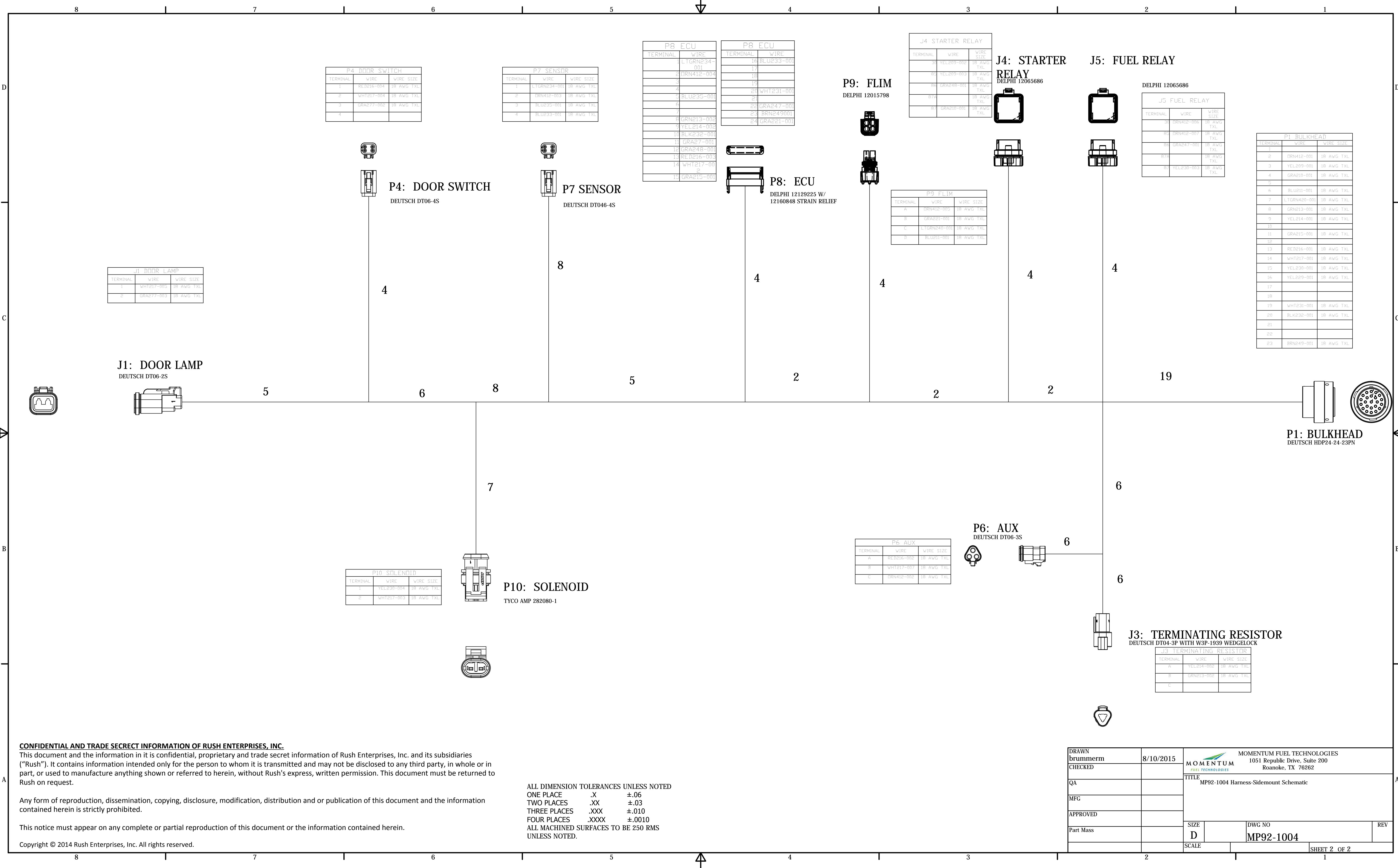
Any form of reproduction, dissemination, copying, disclosure, modification, distribution and or publication of this document and the information contained herein is strictly prohibited.

This notice must appear on any complete or partial reproduction of this document or the information contained herein.

Copyright © 2014 Rush Enterprises, Inc. All rights reserved.

ALL DIMENSION TOLERANCES UNLESS NOTED
 ONE PLACE .X ±.06
 TWO PLACES .XX ±.03
 THREE PLACES .XXX ±.010
 FOUR PLACES .XXXX ±.0010
 ALL MACHINED SURFACES TO BE 250 RMS UNLESS NOTED.

DRAWN brummern	8/10/2014	MOMENTUM FUEL TECHNOLOGIES 1051 Republic Drive, Suite 200 Roanoke, TX 76262	
CHECKED		TITLE Harness-Sidemount Schematic	
QA			
MFG			
APPROVED			
Part Mass		SIZE D	DWG NO MP92-1004
		SCALE	REV A
			SHEET 1 OF 2



P4 DOOR SWITCH		
TERMINAL	WIRE	WIRE SIZE
1	RED016-004	18 AWG TXL
2	WHT217-003	18 AWG TXL
3	GRA277-002	18 AWG TXL
4		

P7 SENSOR		
TERMINAL	WIRE	WIRE SIZE
1	LIGRN234-001	18 AWG TXL
2	BRN412-003	18 AWG TXL
3	BLU235-001	18 AWG TXL
4	BLU233-001	18 AWG TXL

P8 ECU	
TERMINAL	WIRE
1	LIGRN234-001
2	BRN412-004
3	BLU235-001
4	
5	GRN213-002
6	YEL214-002
7	BLK232-001
8	GRA27-001
9	GRA248-001
10	RED216-003
11	WHT217-002
12	GRA215-001
13	GRA215-001
14	GRA215-001
15	GRA215-001

P8 ECU	
TERMINAL	WIRE
16	BLU233-001
17	
18	
19	WHT231-001
20	
21	GRA247-001
22	BRN249001
23	BRN249001
24	GRA221-001

J4 STARTER RELAY		
TERMINAL	WIRE	WIRE SIZE
30	YEL209-002	18 AWG TXL
85	YEL209-003	18 AWG TXL
86	GRA248-001	18 AWG TXL
87		18 AWG TXL
87A		18 AWG TXL
87B	GRA218-001	18 AWG TXL

J5 FUEL RELAY		
TERMINAL	WIRE	WIRE SIZE
30	BRN412-006	18 AWG TXL
85	BRN412-007	18 AWG TXL
86	GRA247-001	18 AWG TXL
87		18 AWG TXL
87A		18 AWG TXL
87B	YEL230-003	18 AWG TXL

P1 BULKHEAD		
TERMINAL	WIRE	WIRE SIZE
1		
2	BRN412-001	18 AWG TXL
3	YEL209-001	18 AWG TXL
4	GRA218-001	18 AWG TXL
5		
6	BLU231-001	18 AWG TXL
7	LIGRN420-001	18 AWG TXL
8	GRN213-001	18 AWG TXL
9	YEL214-001	18 AWG TXL
10		
11	GRA215-001	18 AWG TXL
12		
13	RED216-001	18 AWG TXL
14	WHT217-001	18 AWG TXL
15	YEL230-001	18 AWG TXL
16	YEL229-001	18 AWG TXL
17		
18		
19	WHT231-001	18 AWG TXL
20	BLK232-001	18 AWG TXL
21		
22		
23	BRN249-001	18 AWG TXL

J1 DOOR LAMP		
TERMINAL	WIRE	WIRE SIZE
1	WHT217-003	18 AWG TXL
2	GRA277-003	18 AWG TXL

P9 FLIM		
TERMINAL	WIRE	WIRE SIZE
A	BRN412-002	18 AWG TXL
B	GRA221-001	18 AWG TXL
C	LIGRN240-001	18 AWG TXL
D	BLU211-001	18 AWG TXL

P10 SOLENOID		
TERMINAL	WIRE	WIRE SIZE
1	YEL230-004	18 AWG TXL
2	WHT217-003	18 AWG TXL

P6 AUX		
TERMINAL	WIRE	WIRE SIZE
A	RED216-002	18 AWG TXL
B	WHT217-007	18 AWG TXL
C	BRN412-002	18 AWG TXL

J3 TERMINATING RESISTOR		
TERMINAL	WIRE	WIRE SIZE
A	YEL214-002	18 AWG TXL
B	GRN213-002	18 AWG TXL
C		

CONFIDENTIAL AND TRADE SECRET INFORMATION OF RUSH ENTERPRISES, INC.
 This document and the information in it is confidential, proprietary and trade secret information of Rush Enterprises, Inc. and its subsidiaries ("Rush"). It contains information intended only for the person to whom it is transmitted and may not be disclosed to any third party, in whole or in part, or used to manufacture anything shown or referred to herein, without Rush's express, written permission. This document must be returned to Rush on request.

Any form of reproduction, dissemination, copying, disclosure, modification, distribution and or publication of this document and the information contained herein is strictly prohibited.

This notice must appear on any complete or partial reproduction of this document or the information contained herein.

Copyright © 2014 Rush Enterprises, Inc. All rights reserved.

ALL DIMENSION TOLERANCES UNLESS NOTED
 ONE PLACE .X ±.06
 TWO PLACES .XX ±.03
 THREE PLACES .XXX ±.010
 FOUR PLACES .XXXX ±.0010
 ALL MACHINED SURFACES TO BE 250 RMS UNLESS NOTED.

DRAWN brummerm	8/10/2015	MOMENTUM FUEL TECHNOLOGIES 1051 Republic Drive, Suite 200 Roanoke, TX 76262	
CHECKED		TITLE MP92-1004 Harness-Sidemount Schematic	
QA			
MFG			
APPROVED			
Part Mass		SIZE D	DWG NO MP92-1004
		SCALE	REV
			SHEET 2 OF 2