

NOTES:
 1) INITIAL USE: SIDE-MOUNT w/VERIFLO REGULATOR (ALL DGE's)
 2) PART NUMBER, REV LEVEL, AND SUPPLIER CODE REQUIRED ON ALL PARTS. REFER TO DRAWING FOR SPECIFIC LOCATION, WHERE APPLICABLE. ETCH, STAMP, OR OTHERWISE PERMANENTLY ATTACH REQUIRED INFORMATION ON LARGER PARTS. PERMANENT MARKINGS SHALL BE PLACED IN SUCH A WAY THAT THEY ARE VISIBLE AFTER PART IS COATED OR PAINTED. SMALLER PARTS SHOULD HAVE THE INFORMATION ATTACHED BY THE BEST METHOD POSSIBLE. ALTERNATE MEANS OF ATTACHING INFORMATION MUST BE APPROVED.

CONFIDENTIAL AND TRADE SECRET INFORMATION OF RUSH ENTERPRISES, INC.
 This document and the information in it is confidential, proprietary and trade secret information of Rush Enterprises, Inc. and its subsidiaries ("Rush"). It contains information intended only for the person to whom it is transmitted and may not be disclosed to any third party, in whole or in part, or used to manufacture anything shown or referred to herein, without Rush's express, written permission. This document must be returned to Rush on request.

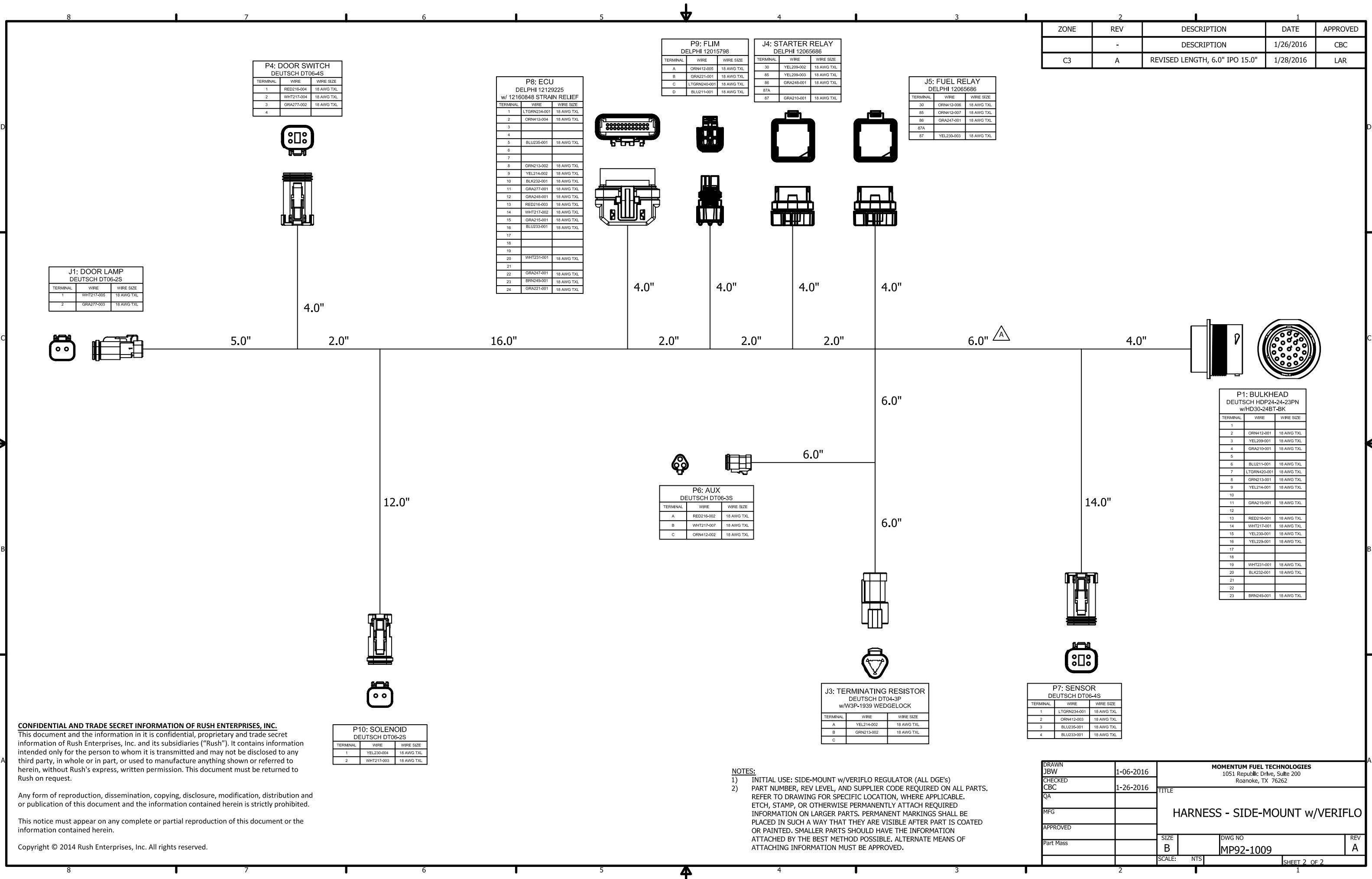
Any form of reproduction, dissemination, copying, disclosure, modification, distribution and or publication of this document and the information contained herein is strictly prohibited.

This notice must appear on any complete or partial reproduction of this document or the information contained herein.

Copyright © 2014 Rush Enterprises, Inc. All rights reserved.

DRAWN JBW	1-06-2016	MOMENTUM FUEL TECHNOLOGIES 1051 Republic Drive, Suite 200 Roanoke, TX 76262		
CHECKED CBC	1-26-2016			
QA		TITLE		
MFG		HARNES - SIDE-MOUNT w/VERIFLO		
APPROVED				
Part Mass		SIZE B	DWG NO MP92-1009	REV A
SCALE: NTS		SHEET 1 OF 2		

ZONE	REV	DESCRIPTION	DATE	APPROVED
	-	DESCRIPTION	1/26/2016	CBC
C3	A	REVISED LENGTH, 6.0" IPO 15.0"	1/28/2016	LAR



P4: DOOR SWITCH
DEUTSCH DT06-4S

TERMINAL	WIRE	WIRE SIZE
1	RED216-004	18 AWG TXL
2	WHT217-004	18 AWG TXL
3	GRA277-002	18 AWG TXL
4		

P8: ECU
DELPHI 12129225
w/ 12160848 STRAIN RELIEF

TERMINAL	WIRE	WIRE SIZE
1	LTGRN234-001	18 AWG TXL
2	ORN412-004	18 AWG TXL
3		
4		
5	BLU235-001	18 AWG TXL
6		
7		
8	GRN213-002	18 AWG TXL
9	YEL214-002	18 AWG TXL
10	BLK232-001	18 AWG TXL
11	GRA277-001	18 AWG TXL
12	GRA248-001	18 AWG TXL
13	RED216-003	18 AWG TXL
14	WHT217-002	18 AWG TXL
15	GRA215-001	18 AWG TXL
16	BLU233-001	18 AWG TXL
17		
18		
19		
20	WHT231-001	18 AWG TXL
21		
22	GRA247-001	18 AWG TXL
23	BRN248-001	18 AWG TXL
24	GRA221-001	18 AWG TXL

P9: FLIM
DELPHI 12015798

TERMINAL	WIRE	WIRE SIZE
A	ORN412-005	18 AWG TXL
B	GRA221-001	18 AWG TXL
C	LTGRN240-001	18 AWG TXL
D	BLU211-001	18 AWG TXL

J4: STARTER RELAY
DELPHI 12065686

TERMINAL	WIRE	WIRE SIZE
30	YEL209-002	18 AWG TXL
85	YEL209-003	18 AWG TXL
86	GRA248-001	18 AWG TXL
87A		
87	GRA210-001	18 AWG TXL

J5: FUEL RELAY
DELPHI 12065686

TERMINAL	WIRE	WIRE SIZE
30	ORN412-006	18 AWG TXL
85	ORN412-007	18 AWG TXL
86	GRA247-001	18 AWG TXL
87A		
87	YEL230-003	18 AWG TXL

J1: DOOR LAMP
DEUTSCH DT06-2S

TERMINAL	WIRE	WIRE SIZE
1	WHT217-005	18 AWG TXL
2	GRA277-003	18 AWG TXL

P6: AUX
DEUTSCH DT06-3S

TERMINAL	WIRE	WIRE SIZE
A	RED216-002	18 AWG TXL
B	WHT217-007	18 AWG TXL
C	ORN412-002	18 AWG TXL

J3: TERMINATING RESISTOR
DEUTSCH DT04-3P
w/W3P-1939 WEDGELOCK

TERMINAL	WIRE	WIRE SIZE
A	YEL214-002	18 AWG TXL
B	GRN213-002	18 AWG TXL
C		

P7: SENSOR
DEUTSCH DT06-4S

TERMINAL	WIRE	WIRE SIZE
1	LTGRN234-001	18 AWG TXL
2	ORN412-003	18 AWG TXL
3	BLU235-001	18 AWG TXL
4	BLU233-001	18 AWG TXL

P1: BULKHEAD
DEUTSCH HDP24-24-23PN
w/HD30-24BT-BK

TERMINAL	WIRE	WIRE SIZE
1		
2	ORN412-001	18 AWG TXL
3	YEL209-001	18 AWG TXL
4	GRA210-001	18 AWG TXL
5		
6	BLU211-001	18 AWG TXL
7	LTGRN420-001	18 AWG TXL
8	GRN213-001	18 AWG TXL
9	YEL214-001	18 AWG TXL
10		
11	GRA215-001	18 AWG TXL
12		
13	RED216-001	18 AWG TXL
14	WHT217-001	18 AWG TXL
15	YEL230-001	18 AWG TXL
16	YEL229-001	18 AWG TXL
17		
18		
19	WHT231-001	18 AWG TXL
20	BLK232-001	18 AWG TXL
21		
22		
23	BRN248-001	18 AWG TXL

P10: SOLENOID
DEUTSCH DT06-2S

TERMINAL	WIRE	WIRE SIZE
1	YEL230-004	18 AWG TXL
2	WHT217-003	18 AWG TXL

CONFIDENTIAL AND TRADE SECRET INFORMATION OF RUSH ENTERPRISES, INC.
This document and the information in it is confidential, proprietary and trade secret information of Rush Enterprises, Inc. and its subsidiaries ("Rush"). It contains information intended only for the person to whom it is transmitted and may not be disclosed to any third party, in whole or in part, or used to manufacture anything shown or referred to herein, without Rush's express, written permission. This document must be returned to Rush on request.

Any form of reproduction, dissemination, copying, disclosure, modification, distribution and or publication of this document and the information contained herein is strictly prohibited.

This notice must appear on any complete or partial reproduction of this document or the information contained herein.

Copyright © 2014 Rush Enterprises, Inc. All rights reserved.

NOTES:
1) INITIAL USE: SIDE-MOUNT w/VERIFLO REGULATOR (ALL DGE'S)
PART NUMBER, REV LEVEL, AND SUPPLIER CODE REQUIRED ON ALL PARTS.
REFER TO DRAWING FOR SPECIFIC LOCATION, WHERE APPLICABLE.
ETCH, STAMP, OR OTHERWISE PERMANENTLY ATTACH REQUIRED INFORMATION ON LARGER PARTS. PERMANENT MARKINGS SHALL BE PLACED IN SUCH A WAY THAT THEY ARE VISIBLE AFTER PART IS COATED OR PAINTED. SMALLER PARTS SHOULD HAVE THE INFORMATION ATTACHED BY THE BEST METHOD POSSIBLE. ALTERNATE MEANS OF ATTACHING INFORMATION MUST BE APPROVED.

DRAWN JBW	1-06-2016	MOMENTUM FUEL TECHNOLOGIES 1051 Republic Drive, Suite 200 Roanoke, TX 76262	
CHECKED CBC	1-26-2016		
QA		TITLE HARNES - SIDE-MOUNT w/VERIFLO	
MFG		SIZE B	DWG NO MP92-1009
APPROVED		REV A	
Part Mass		SCALE: NTS	SHEET 2 OF 2