

OBSOLETE

J1 AUX TANK BULKHEAD

A
B
C
D
E
F
G
H
I
J
K
L
M
N
O
P
Q
R
S
T
U
V
W

RED 0100-2

WHT 0100-1

BLK 0100-1

P1 DOOR LIGHT

1 2

WHT 0100-1

BLK 0100-1

P2 DOOR SWITCH

RED 0100-2

WHT 0100-1

BLK 0100-1

1
2
3
4

CONFIDENTIAL AND TRADE SECRET INFORMATION OF RUSH ENTERPRISES, INC.

This document and the information in it is confidential, proprietary and trade secret information of Rush Enterprises, Inc. and its subsidiaries ("Rush"). It contains information intended only for the person to whom it is transmitted and may not be disclosed to any third party, in whole or in part, or used to manufacture anything shown or referred to herein, without Rush's express, written permission. This document must be returned to Rush on request.

Any form of reproduction, dissemination, copying, disclosure, modification, distribution and or publication of this document and the information contained herein is strictly prohibited.

This notice must appear on any complete or partial reproduction of this document or the information contained herein.

Copyright © 2016 Rush Enterprises, Inc. All rights reserved.

ALL DIMENSION TOLERANCES UNLESS NOTED
 ONE PLACE .X ±.06
 TWO PLACES .XX ±.03
 THREE PLACES .XXX ±.010
 FOUR PLACES .XXXX ±.0010
 ALL MACHINED SURFACES TO BE 250 RMS UNLESS NOTED.

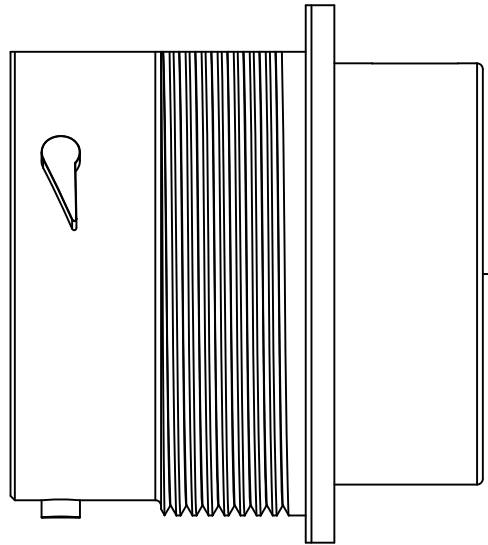


DO NOT SCALE THIS PRINT

DRAWN brummern	1/14/2016	MOMENTUM FUEL TECHNOLOGIES 1051 Republic Drive, Suite 200 Roanoke, TX 76262	
CHECKED cbc	1/25/16		
QA		TITLE HARNES- AUX TANK	
MFG		SIZE D	DWG NO MP92-1012
APPROVED cbc	1/25/16	SCALE	REV
Part Mass			SHEET 1 OF 2

OBSOLETE

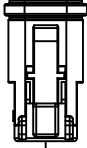
J1 AUX BULKHEAD



Connector Part Number
HDP24-24-23PN
0462-202-16141
114017

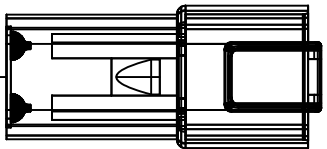
44"

P1 DOOR LIGHTS



Connector Part Number
DT06-2S
0462-201-16141
DT04-2P
114017

6"



6"

P2 DOOR SWITCH

Connector Part Number
DT06-4S
0462-201-16141
DT04-4P
114017

CONFIDENTIAL AND TRADE SECRET INFORMATION OF RUSH ENTERPRISES, INC.

This document and the information in it is confidential, proprietary and trade secret information of Rush Enterprises, Inc. and its subsidiaries ("Rush"). It contains information intended only for the person to whom it is transmitted and may not be disclosed to any third party, in whole or in part, or used to manufacture anything shown or referred to herein, without Rush's express, written permission. This document must be returned to Rush on request.

Any form of reproduction, dissemination, copying, disclosure, modification, distribution and or publication of this document and the information contained herein is strictly prohibited.

This notice must appear on any complete or partial reproduction of this document or the information contained herein.

Copyright © 2016 Rush Enterprises, Inc. All rights reserved.

ALL DIMENSION TOLERANCES UNLESS NOTED
 ONE PLACE .X ±.06
 TWO PLACES .XX ±.03
 THREE PLACES .XXX ±.010
 FOUR PLACES .XXXX ±.0010
 ALL MACHINED SURFACES TO BE 250 RMS UNLESS NOTED.



DO NOT SCALE THIS PRINT

DRAWN brummern	1/14/2016	MOMENTUM FUEL TECHNOLOGIES 1051 Republic Drive, Suite 200 Roanoke, TX 76262	
CHECKED		TITLE HARNES- AUX TANK	
QA		SIZE D	DWG NO MP92-1012
MFG		SCALE	REV
APPROVED			
Part Mass			
		SHEET 2 OF 2	