

P3
 Start
 Interrupt
 Starter Side

Connector part number
 12047682
 12047767

J1
 Start
 Interrupt
 Switch Side

Connector part number
 12047683
 12047581

**J4: STARTER
 RELAY**
 CONNECTOR PART NUMBER
 12065662
 12020156

P1: DOOR SWITCH
 CONNECTOR PART NUMBER
 DT06-4S
 W4S
 114017
 0462-209-16141

210"

10"

225"

76"

76"

NOTES:

- 1) ALL WIRES TO BE 18 AWG TXL
- 2) USE WITH SYSTEM WITHOUT MOMENTUM ELECTRONICS
- 3) HARNESS TO BE BRAIDED WITH VN4400SOR PVC COATED YARN OR EQUIVALENT

ALL DIMENSION TOLERANCES UNLESS NOTED
 ONE PLACE .X ±.06
 TWO PLACES .XX ±.03
 THREE PLACES .XXX ±.010
 FOUR PLACES .XXXX ±.0010
 ALL MACHINED SURFACES TO BE 250 RMS UNLESS NOTED.



DO NOT SCALE THIS PRINT

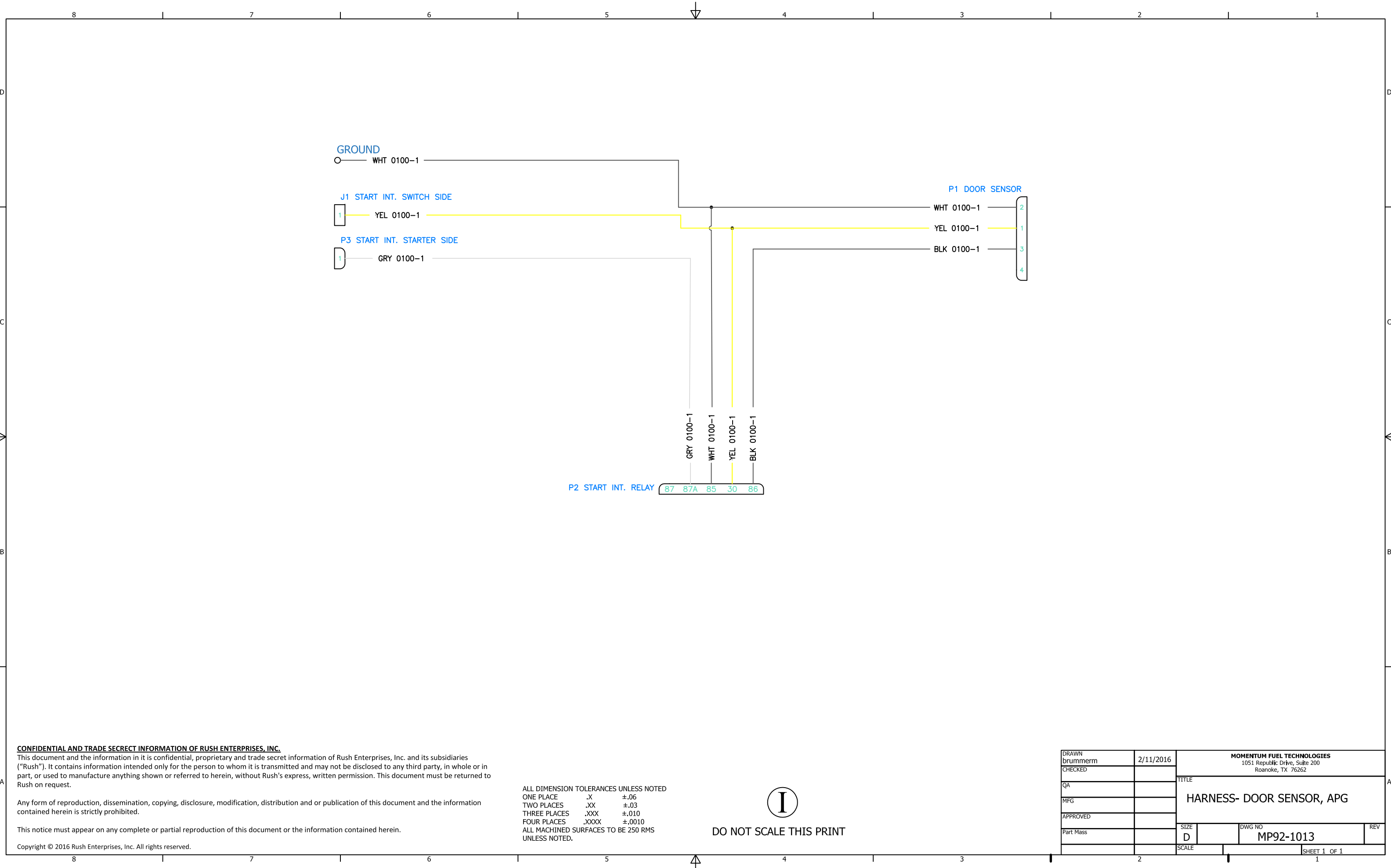
CONFIDENTIAL AND TRADE SECRET INFORMATION OF RUSH ENTERPRISES, INC.
 This document and the information in it is confidential, proprietary and trade secret information of Rush Enterprises, Inc. and its subsidiaries ("Rush"). It contains information intended only for the person to whom it is transmitted and may not be disclosed to any third party, in whole or in part, or used to manufacture anything shown or referred to herein, without Rush's express, written permission. This document must be returned to Rush on request.

Any form of reproduction, dissemination, copying, disclosure, modification, distribution and or publication of this document and the information contained herein is strictly prohibited.

This notice must appear on any complete or partial reproduction of this document or the information contained herein.

Copyright © 2016 Rush Enterprises, Inc. All rights reserved.

DRAWN BRUMMERM	2/15/2016	MOMENTUM FUEL TECHNOLOGIES 1051 Republic Drive, Suite 200 Roanoke, TX 76262	
CHECKED CULBERSONC	3/28/17		
QA		TITLE HARNESS- DOOR SENSOR, APG	
MFG			
APPROVED CULBERSONC	3/28/17	SIZE D	DWG NO MP92-1013
Part Mass		SCALE	REV
			SHEET 1 OF 1



CONFIDENTIAL AND TRADE SECRET INFORMATION OF RUSH ENTERPRISES, INC.

This document and the information in it is confidential, proprietary and trade secret information of Rush Enterprises, Inc. and its subsidiaries ("Rush"). It contains information intended only for the person to whom it is transmitted and may not be disclosed to any third party, in whole or in part, or used to manufacture anything shown or referred to herein, without Rush's express, written permission. This document must be returned to Rush on request.

Any form of reproduction, dissemination, copying, disclosure, modification, distribution and or publication of this document and the information contained herein is strictly prohibited.

This notice must appear on any complete or partial reproduction of this document or the information contained herein.

Copyright © 2016 Rush Enterprises, Inc. All rights reserved.

ALL DIMENSION TOLERANCES UNLESS NOTED
 ONE PLACE .X ±.06
 TWO PLACES .XX ±.03
 THREE PLACES .XXX ±.010
 FOUR PLACES .XXXX ±.0010
 ALL MACHINED SURFACES TO BE 250 RMS UNLESS NOTED.



DO NOT SCALE THIS PRINT

DRAWN brummerrm	2/11/2016	MOMENTUM FUEL TECHNOLOGIES 1051 Republic Drive, Suite 200 Roanoke, TX 76262	
CHECKED		TITLE HARNESS- DOOR SENSOR, APG	
QA		SIZE D	DWG NO MP92-1013
MFG		SCALE	REV
APPROVED			
Part Mass			
		SHEET 1 OF 1	