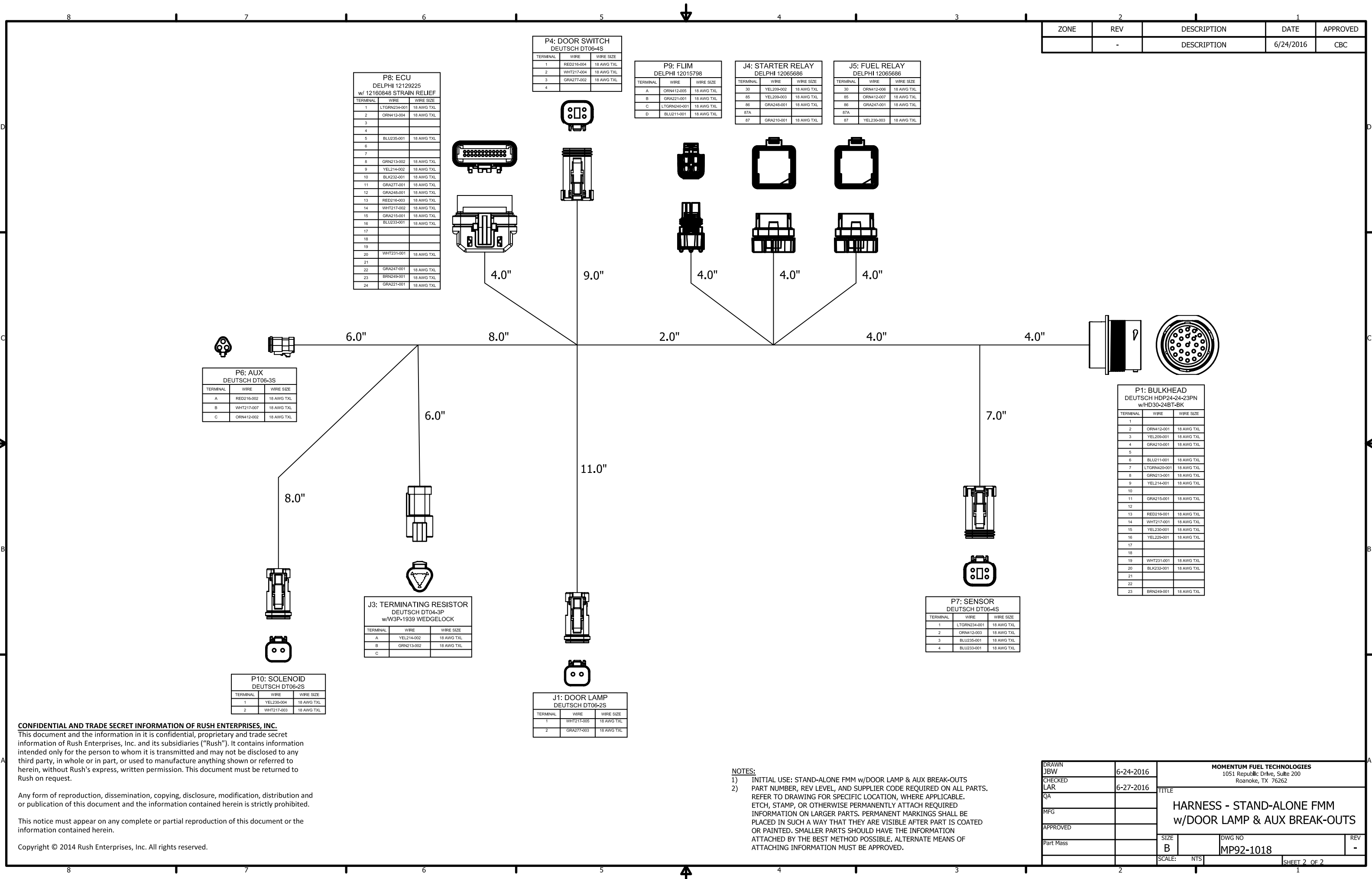


ZONE	REV	DESCRIPTION	DATE	APPROVED
	-	DESCRIPTION	6/24/2016	CBC



CONFIDENTIAL AND TRADE SECRET INFORMATION OF RUSH ENTERPRISES, INC.
 This document and the information in it is confidential, proprietary and trade secret information of Rush Enterprises, Inc. and its subsidiaries ("Rush"). It contains information intended only for the person to whom it is transmitted and may not be disclosed to any third party, in whole or in part, or used to manufacture anything shown or referred to herein, without Rush's express, written permission. This document must be returned to Rush on request.

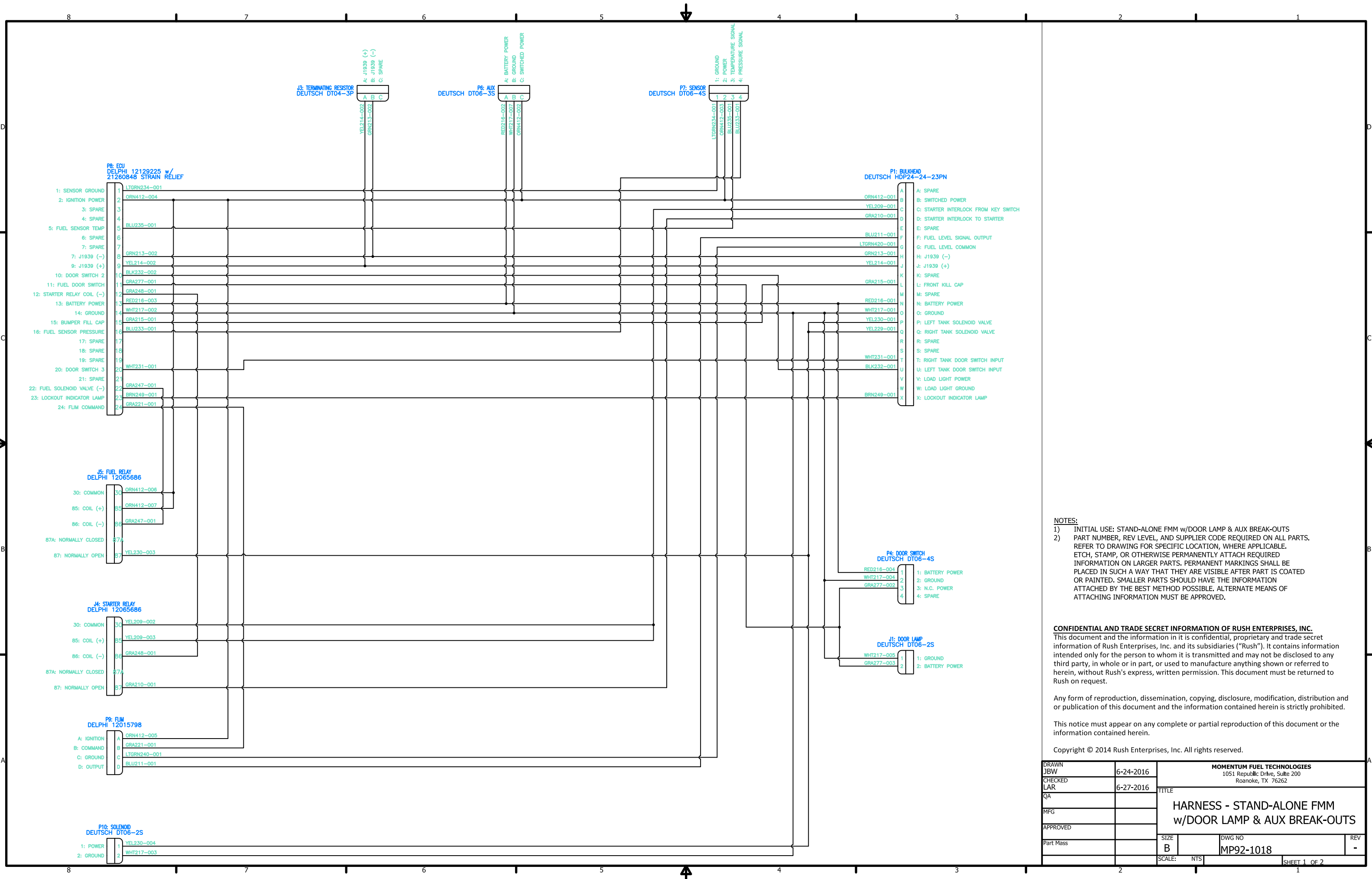
Any form of reproduction, dissemination, copying, disclosure, modification, distribution and or publication of this document and the information contained herein is strictly prohibited.

This notice must appear on any complete or partial reproduction of this document or the information contained herein.

Copyright © 2014 Rush Enterprises, Inc. All rights reserved.

- NOTES:**
- INITIAL USE: STAND-ALONE FMF w/DOOR LAMP & AUX BREAK-OUTS
 - PART NUMBER, REV LEVEL, AND SUPPLIER CODE REQUIRED ON ALL PARTS. REFER TO DRAWING FOR SPECIFIC LOCATION, WHERE APPLICABLE. ETCH, STAMP, OR OTHERWISE PERMANENTLY ATTACH REQUIRED INFORMATION ON LARGER PARTS. PERMANENT MARKINGS SHALL BE PLACED IN SUCH A WAY THAT THEY ARE VISIBLE AFTER PART IS COATED OR PAINTED. SMALLER PARTS SHOULD HAVE THE INFORMATION ATTACHED BY THE BEST METHOD POSSIBLE. ALTERNATE MEANS OF ATTACHING INFORMATION MUST BE APPROVED.

DRAWN JBW	6-24-2016	MOMENTUM FUEL TECHNOLOGIES 1051 Republic Drive, Suite 200 Roanoke, TX 76262	
CHECKED LAR	6-27-2016		
QA		TITLE HARNESS - STAND-ALONE FMF w/DOOR LAMP & AUX BREAK-OUTS	
MFG		SIZE B	DWG NO MP92-1018
APPROVED		SCALE: NTS	REV -
Part Mass		SHEET 2 OF 2	



- 1: SENSOR GROUND
- 2: IGNITION POWER
- 3: SPARE
- 4: SPARE
- 5: FUEL SENSOR TEMP
- 6: SPARE
- 7: SPARE
- 7: J1939 (-)
- 8: J1939 (+)
- 10: DOOR SWITCH 2
- 11: FUEL DOOR SWITCH
- 12: STARTER RELAY COIL (-)
- 13: BATTERY POWER
- 14: GROUND
- 15: BUMPER FILL CAP
- 16: FUEL SENSOR PRESSURE
- 17: SPARE
- 18: SPARE
- 19: SPARE
- 20: DOOR SWITCH 3
- 21: SPARE
- 22: FUEL SOLENOID VALVE (-)
- 23: LOCKOUT INDICATOR LAMP
- 24: FLJM COMMAND

- A: SPARE
- B: SWITCHED POWER
- C: STARTER INTERLOCK FROM KEY SWITCH
- D: STARTER INTERLOCK TO STARTER
- E: SPARE
- F: FUEL LEVEL SIGNAL OUTPUT
- G: FUEL LEVEL COMMON
- H: J1939 (-)
- J: J1939 (+)
- K: SPARE
- L: FRONT KILL CAP
- M: SPARE
- N: BATTERY POWER
- O: GROUND
- P: LEFT TANK SOLENOID VALVE
- Q: RIGHT TANK SOLENOID VALVE
- R: SPARE
- S: SPARE
- T: RIGHT TANK DOOR SWITCH INPUT
- U: LEFT TANK DOOR SWITCH INPUT
- V: LOAD LIGHT POWER
- W: LOAD LIGHT GROUND
- X: LOCKOUT INDICATOR LAMP

NOTES:
 1) INITIAL USE: STAND-ALONE FMM w/DOOR LAMP & AUX BREAK-OUTS
 2) PART NUMBER, REV LEVEL, AND SUPPLIER CODE REQUIRED ON ALL PARTS. REFER TO DRAWING FOR SPECIFIC LOCATION, WHERE APPLICABLE. ETCH, STAMP, OR OTHERWISE PERMANENTLY ATTACH REQUIRED INFORMATION ON LARGER PARTS. PERMANENT MARKINGS SHALL BE PLACED IN SUCH A WAY THAT THEY ARE VISIBLE AFTER PART IS COATED OR PAINTED. SMALLER PARTS SHOULD HAVE THE INFORMATION ATTACHED BY THE BEST METHOD POSSIBLE. ALTERNATE MEANS OF ATTACHING INFORMATION MUST BE APPROVED.

CONFIDENTIAL AND TRADE SECRET INFORMATION OF RUSH ENTERPRISES, INC.
 This document and the information in it is confidential, proprietary and trade secret information of Rush Enterprises, Inc. and its subsidiaries ("Rush"). It contains information intended only for the person to whom it is transmitted and may not be disclosed to any third party, in whole or in part, or used to manufacture anything shown or referred to herein, without Rush's express, written permission. This document must be returned to Rush on request.

Any form of reproduction, dissemination, copying, disclosure, modification, distribution and or publication of this document and the information contained herein is strictly prohibited.

This notice must appear on any complete or partial reproduction of this document or the information contained herein.

Copyright © 2014 Rush Enterprises, Inc. All rights reserved.

DRAWN JBW	6-24-2016	MOMENTUM FUEL TECHNOLOGIES 1051 Republic Drive, Suite 200 Roanoke, TX 76262	
CHECKED LAR	6-27-2016		
QA		TITLE	
MFG		HARNES - STAND-ALONE FMM w/DOOR LAMP & AUX BREAK-OUTS	
APPROVED		SIZE	REV
Part Mass		B	-
		DWG NO	MP92-1018
		SCALE:	NTS
		SHEET 1 OF 2	