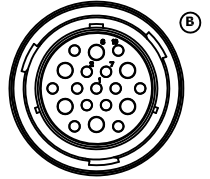
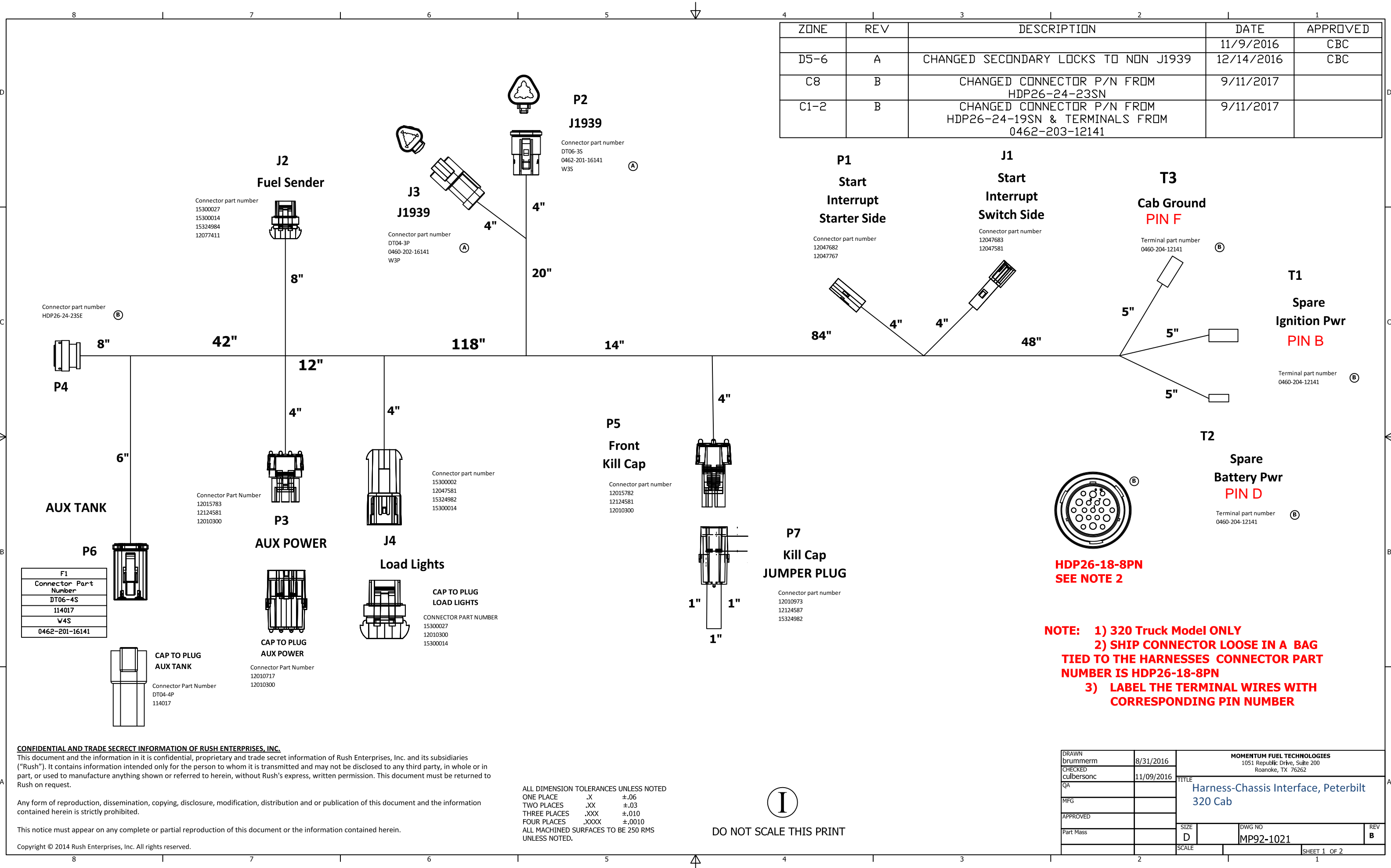


ZONE	REV	DESCRIPTION	DATE	APPROVED
D5-6	A	CHANGED SECONDARY LOCKS TO NON J1939	11/9/2016	CBC
C8	B	CHANGED CONNECTOR P/N FROM HDP26-24-23SN	12/14/2016	CBC
C1-2	B	CHANGED CONNECTOR P/N FROM HDP26-24-19SN & TERMINALS FROM 0462-203-12141	9/11/2017	



**HDP26-18-8PN  
SEE NOTE 2**

**NOTE: 1) 320 Truck Model ONLY  
2) SHIP CONNECTOR LOOSE IN A BAG TIED TO THE HARNESSES CONNECTOR PART NUMBER IS HDP26-18-8PN  
3) LABEL THE TERMINAL WIRES WITH CORRESPONDING PIN NUMBER**

**CONFIDENTIAL AND TRADE SECRET INFORMATION OF RUSH ENTERPRISES, INC.**  
This document and the information in it is confidential, proprietary and trade secret information of Rush Enterprises, Inc. and its subsidiaries ("Rush"). It contains information intended only for the person to whom it is transmitted and may not be disclosed to any third party, in whole or in part, or used to manufacture anything shown or referred to herein, without Rush's express, written permission. This document must be returned to Rush on request.

Any form of reproduction, dissemination, copying, disclosure, modification, distribution and or publication of this document and the information contained herein is strictly prohibited.

This notice must appear on any complete or partial reproduction of this document or the information contained herein.

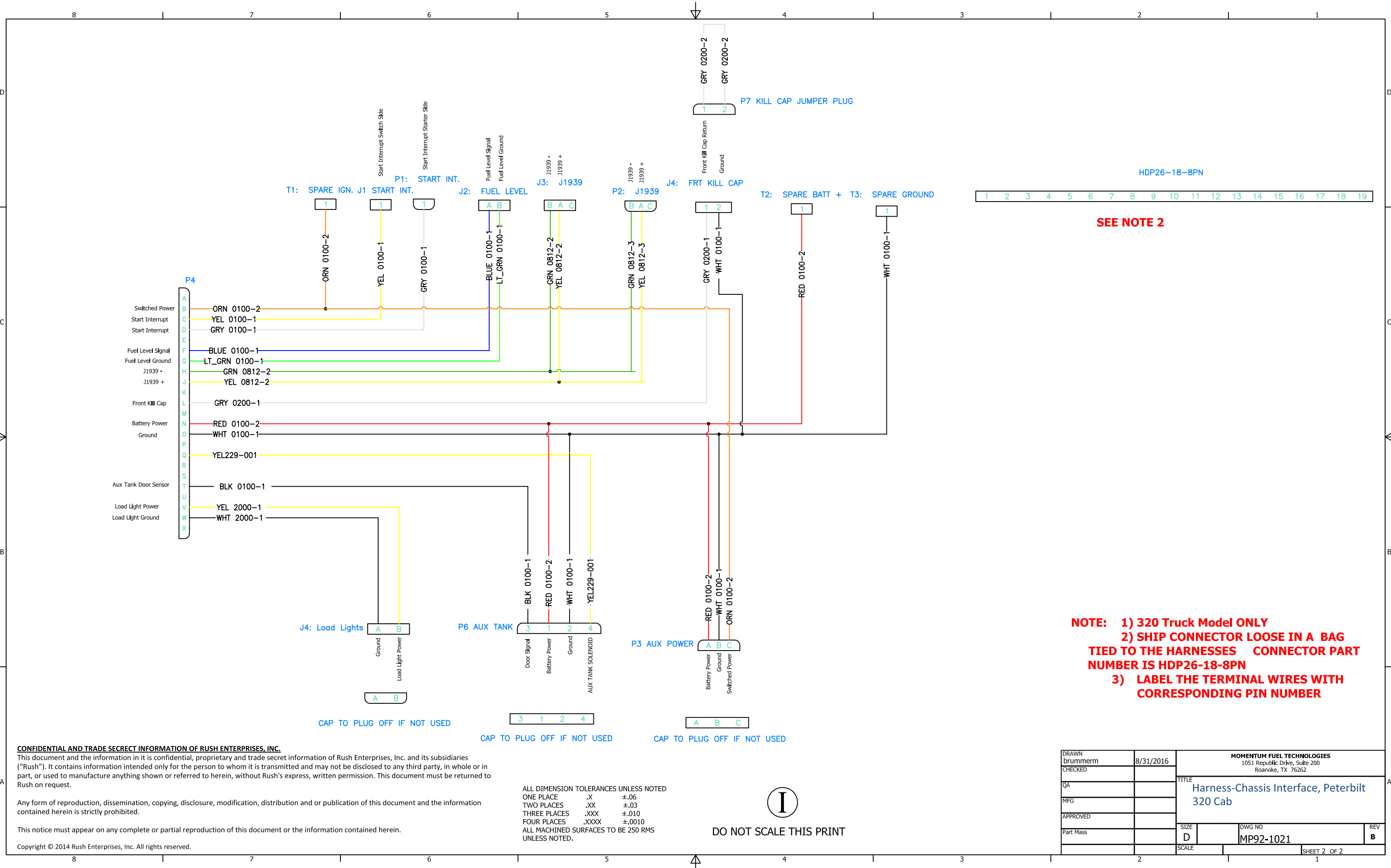
Copyright © 2014 Rush Enterprises, Inc. All rights reserved.

ALL DIMENSION TOLERANCES UNLESS NOTED  
ONE PLACE .X ±.06  
TWO PLACES .XX ±.03  
THREE PLACES .XXX ±.010  
FOUR PLACES .XXXX ±.0010  
ALL MACHINED SURFACES TO BE 250 RMS UNLESS NOTED.



DO NOT SCALE THIS PRINT

DRAWN brummern	8/31/2016	MOMENTUM FUEL TECHNOLOGIES 1051 Republic Drive, Suite 200 Roanoke, TX 76262	
CHECKED culbersonc	11/09/2016	TITLE Harness-Chassis Interface, Peterbilt 320 Cab	
QA		SIZE D	DWG NO MP92-1021
MFG		SCALE	REV B
APPROVED		SHEET 1 OF 2	
Part Mass			



HDP26-18-8PN  
1 2 3 4 5 6 7 8 9 10 11 12 13 14 15 16 17 18 19

SEE NOTE 2

**NOTE: 1) 320 Truck Model ONLY  
2) SHIP CONNECTOR LOOSE IN A BAG TIED TO THE HARNESSES CONNECTOR PART NUMBER IS HDP26-18-8PN  
3) LABEL THE TERMINAL WIRES WITH CORRESPONDING PIN NUMBER**

**CONFIDENTIAL AND TRADE SECRET INFORMATION OF RUSH ENTERPRISES, INC.**  
This document and the information in it is confidential, proprietary and trade secret information of Rush Enterprises, Inc. and its subsidiaries ("Rush"). It contains information intended only for the person to whom it is transmitted and may not be disclosed to any third party, in whole or in part, or used to manufacture anything shown or referred to herein, without Rush's express, written permission. This document must be returned to Rush on request.

Any form of reproduction, dissemination, copying, disclosure, modification, distribution and or publication of this document and the information contained herein is strictly prohibited.

This notice must appear on any complete or partial reproduction of this document or the information contained herein.

Copyright © 2014 Rush Enterprises, Inc. All rights reserved.

ALL DIMENSION TOLERANCES UNLESS NOTED  
ONE PLACE .X ±.06  
TWO PLACES .XX ±.03  
THREE PLACES .XXX ±.010  
FOUR PLACES .XXXX ±.0010  
ALL MACHINED SURFACES TO BE 250 RMS UNLESS NOTED.



DO NOT SCALE THIS PRINT

DRAWN brummerm	8/31/2016	MOMENTUM FUEL TECHNOLOGIES 1051 Republic Drive, Suite 200 Roanoke, TX 76262	
CHECKED		TITLE Harness-Chassis Interface, Peterbilt 320 Cab	
QA		SIZE D	REV B
MFG		DWG NO MP92-1021	
APPROVED		SCALE	SHEET 2 OF 2
Part Mass			