

P1
CHASSIS INTERFACE
 Connector part number
 12047937
 12066304
 12059168
 12048074
 15324973

T3
Cab Ground
 Connector part number
 5/16 ring terminal

T1
Spare Ignition Pwr
 Connector part number
 12034047

T2
Spare Battery Pwr
 Connector part number
 12034047

NOTE: 1) USE ONLY WITH MP92-1022
 2) USE ONLY WHEN CHASSIS DOES NOT HAVE THE 8 PIN CHASSIS INTERFACE CONNECTOR

CONFIDENTIAL AND TRADE SECRET INFORMATION OF RUSH ENTERPRISES, INC.
 This document and the information in it is confidential, proprietary and trade secret information of Rush Enterprises, Inc. and its subsidiaries ("Rush"). It contains information intended only for the person to whom it is transmitted and may not be disclosed to any third party, in whole or in part, or used to manufacture anything shown or referred to herein, without Rush's express, written permission. This document must be returned to Rush on request.

Any form of reproduction, dissemination, copying, disclosure, modification, distribution and or publication of this document and the information contained herein is strictly prohibited.

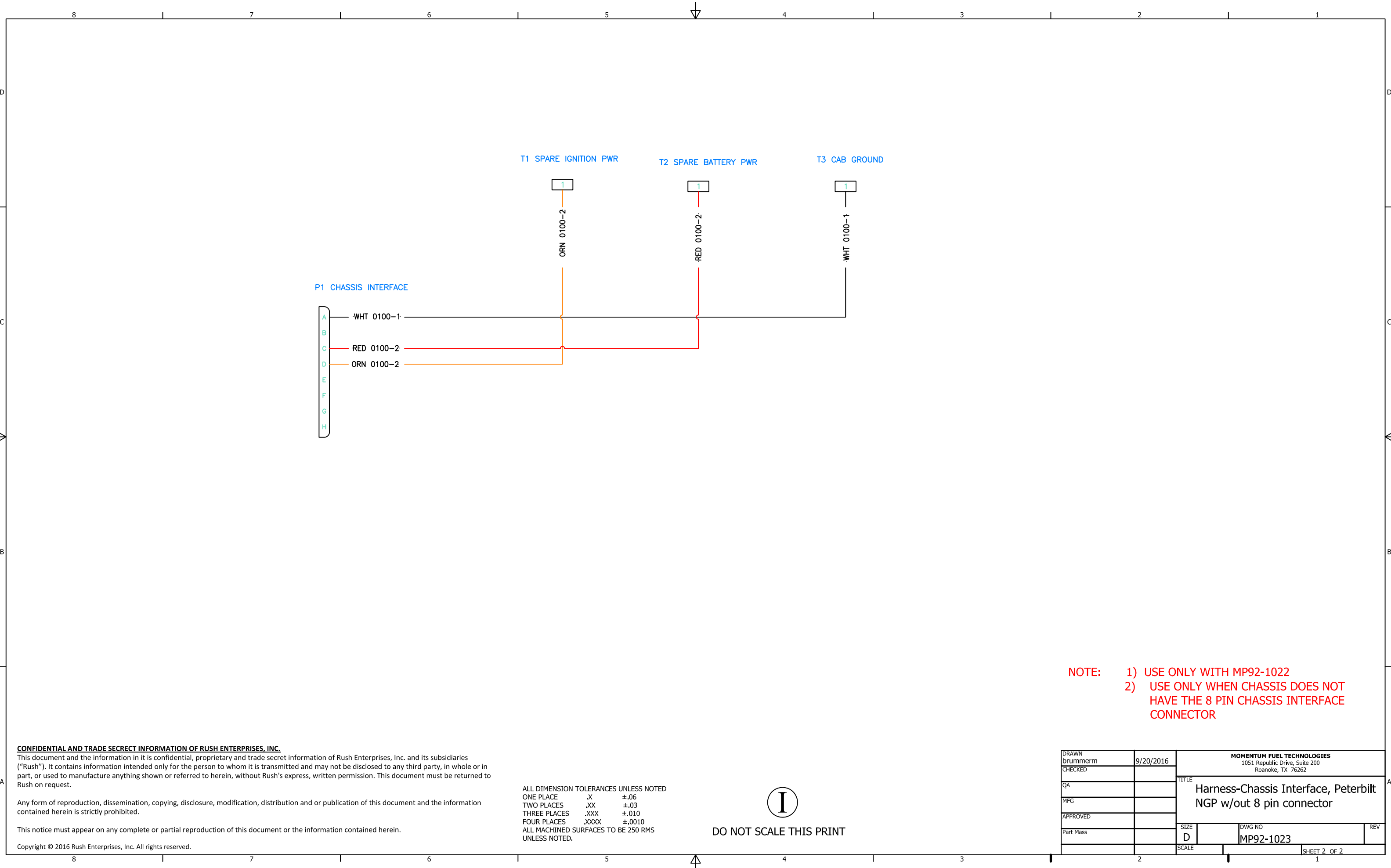
This notice must appear on any complete or partial reproduction of this document or the information contained herein.

Copyright © 2016 Rush Enterprises, Inc. All rights reserved.

ALL DIMENSION TOLERANCES UNLESS NOTED
 ONE PLACE .X ±.06
 TWO PLACES .XX ±.03
 THREE PLACES .XXX ±.010
 FOUR PLACES .XXXX ±.0010
 ALL MACHINED SURFACES TO BE 250 RMS UNLESS NOTED.

I
 DO NOT SCALE THIS PRINT

DRAWN brummer	9/20/2016	MOMENTUM FUEL TECHNOLOGIES 1051 Republic Drive, Suite 200 Roanoke, TX 76262		
CHECKED		TITLE Harness-Chassis Interface, Peterbilt NGP w/out 8 pin connector		
QA		SIZE D	DWG NO MP92-1023	REV
MFG		SCALE		SHEET 1 OF 2
APPROVED				
Part Mass				



P1 CHASSIS INTERFACE

T1 SPARE IGNITION PWR

T2 SPARE BATTERY PWR

T3 CAB GROUND

A
B
C
D
E
F
G
H

WHT 0100-1
RED 0100-2
ORN 0100-2

1
ORN 0100-2

1
RED 0100-2

1
WHT 0100-1

NOTE: 1) USE ONLY WITH MP92-1022
2) USE ONLY WHEN CHASSIS DOES NOT HAVE THE 8 PIN CHASSIS INTERFACE CONNECTOR

CONFIDENTIAL AND TRADE SECRET INFORMATION OF RUSH ENTERPRISES, INC.
This document and the information in it is confidential, proprietary and trade secret information of Rush Enterprises, Inc. and its subsidiaries ("Rush"). It contains information intended only for the person to whom it is transmitted and may not be disclosed to any third party, in whole or in part, or used to manufacture anything shown or referred to herein, without Rush's express, written permission. This document must be returned to Rush on request.

Any form of reproduction, dissemination, copying, disclosure, modification, distribution and or publication of this document and the information contained herein is strictly prohibited.

This notice must appear on any complete or partial reproduction of this document or the information contained herein.

Copyright © 2016 Rush Enterprises, Inc. All rights reserved.

ALL DIMENSION TOLERANCES UNLESS NOTED
ONE PLACE .X ±.06
TWO PLACES .XX ±.03
THREE PLACES .XXX ±.010
FOUR PLACES .XXXX ±.0010
ALL MACHINED SURFACES TO BE 250 RMS UNLESS NOTED.



DO NOT SCALE THIS PRINT

DRAWN brummerrm	9/20/2016	MOMENTUM FUEL TECHNOLOGIES 1051 Republic Drive, Suite 200 Roanoke, TX 76262	
CHECKED		TITLE Harness-Chassis Interface, Peterbilt NGP w/out 8 pin connector	
QA		SIZE D	DWG NO MP92-1023
MFG		SCALE	REV
APPROVED			
Part Mass			
			SHEET 2 OF 2