

**SOCKET TERMINAL**  
Connector Part Number  
0462-209-16141

**J2**  
**FUEL SENDER**  
CONNECTOR PART NUMBER  
15300002  
15324982  
15300014  
12129497

**P3**  
**AUX POWER**  
Connector Part Number  
12010717  
12010300  
12124587

**J6**  
**Chassis Interface**  
Connector part number  
12047931  
12047936  
12045773  
15324973  
12059168

50"

8"

4"

8"

**NOTE: WORKS WITH THE HARNESS  
MP92-1007 FOR THE 8 PIN CHASSIS  
INTERFACE**

**CONFIDENTIAL AND TRADE SECRET INFORMATION OF RUSH ENTERPRISES, INC.**  
This document and the information in it is confidential, proprietary and trade secret information of Rush Enterprises, Inc. and its subsidiaries ("Rush"). It contains information intended only for the person to whom it is transmitted and may not be disclosed to any third party, in whole or in part, or used to manufacture anything shown or referred to herein, without Rush's express, written permission. This document must be returned to Rush on request.

Any form of reproduction, dissemination, copying, disclosure, modification, distribution and or publication of this document and the information contained herein is strictly prohibited.

This notice must appear on any complete or partial reproduction of this document or the information contained herein.

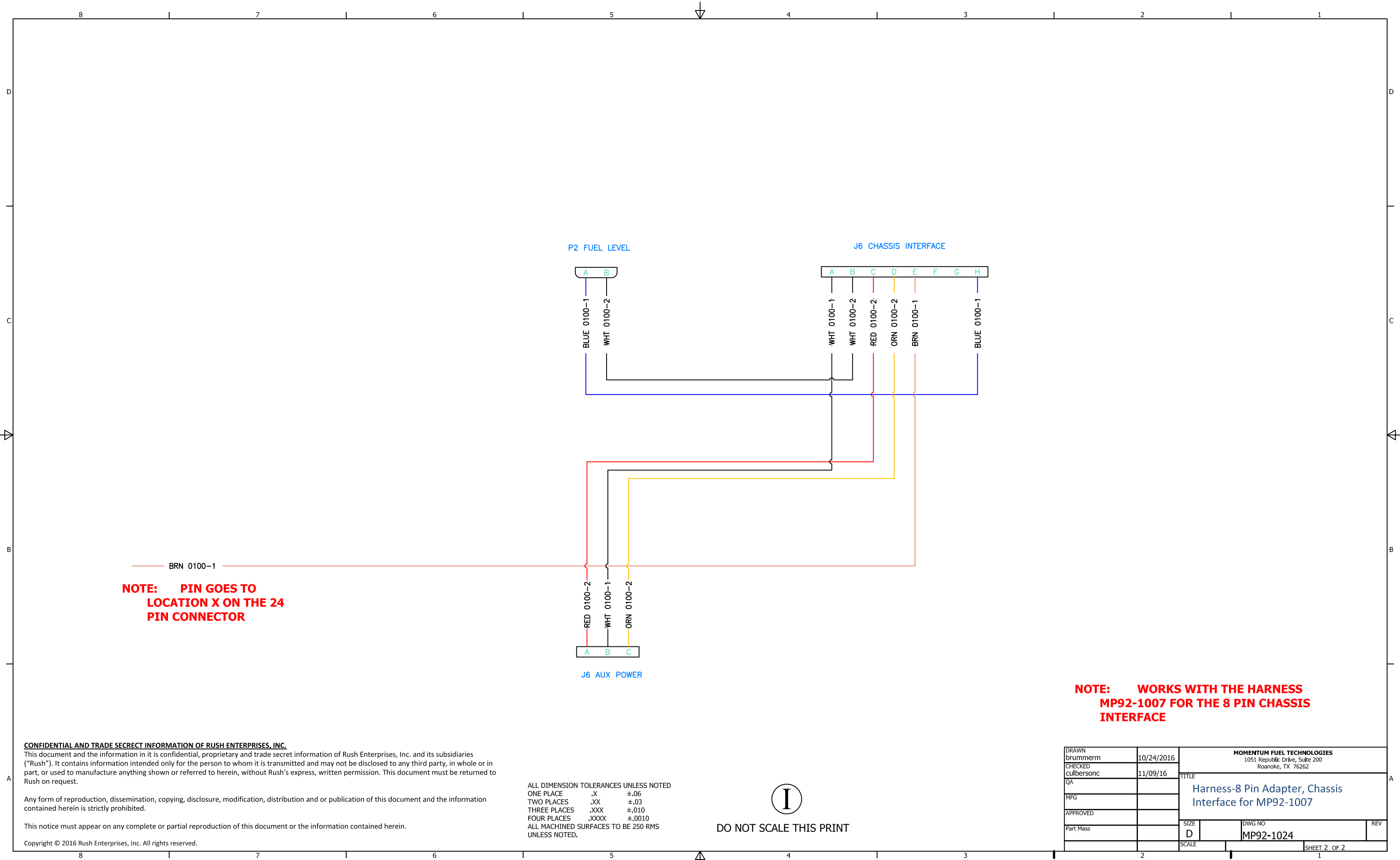
Copyright © 2016 Rush Enterprises, Inc. All rights reserved.

ALL DIMENSION TOLERANCES UNLESS NOTED  
ONE PLACE .X ±.06  
TWO PLACES .XX ±.03  
THREE PLACES .XXX ±.010  
FOUR PLACES .XXXX ±.0010  
ALL MACHINED SURFACES TO BE 250 RMS UNLESS NOTED.



DO NOT SCALE THIS PRINT

DRAWN brummerrm	10/24/2016	<b>MOMENTUM FUEL TECHNOLOGIES</b> 1051 Republic Drive, Suite 200 Roanoke, TX 76262	
CHECKED culbersonc	11/09/16	TITLE Harness-8 Pin Adapter, Chassis Interface for MP92-1007	
QA			
MFG			
APPROVED			
Part Mass		SIZE D	REV
		DWG NO MP92-1024	
	SCALE	SHEET 1 OF 2	



**NOTE: PIN GOES TO LOCATION X ON THE 24 PIN CONNECTOR**

**NOTE: WORKS WITH THE HARNESS MP92-1007 FOR THE 8 PIN CHASSIS INTERFACE**

**CONFIDENTIAL AND TRADE SECRET INFORMATION OF RUSH ENTERPRISES, INC.**  
 This document and the information in it is confidential, proprietary and trade secret information of Rush Enterprises, Inc. and its subsidiaries ("Rush"). It contains information intended only for the person to whom it is transmitted and may not be disclosed to any third party, in whole or in part, or used to manufacture anything shown or referred to herein, without Rush's express, written permission. This document must be returned to Rush on request.

Any form of reproduction, dissemination, copying, disclosure, modification, distribution and or publication of this document and the information contained herein is strictly prohibited.

This notice must appear on any complete or partial reproduction of this document or the information contained herein.

Copyright © 2016 Rush Enterprises, Inc. All rights reserved.

ALL DIMENSION TOLERANCES UNLESS NOTED  
 ONE PLACE .X ±.06  
 TWO PLACES .XX ±.03  
 THREE PLACES .XXX ±.010  
 FOUR PLACES .XXXX ±.0010  
 ALL MACHINED SURFACES TO BE 250 RMS UNLESS NOTED.



DO NOT SCALE THIS PRINT

DRAWN brummern	10/24/2016	<b>MOMENTUM FUEL TECHNOLOGIES</b> 1051 Republic Drive, Suite 200 Roanoke, TX 76262	
CHECKED culbersonc	11/09/16	TITLE <b>Harness-8 Pin Adapter, Chassis Interface for MP92-1007</b>	
QA		SIZE D	REV
MFG		DWG NO MP92-1024	
APPROVED		SCALE	SHEET 2 OF 2
Part Mass			