

P1
CHASSIS INTERFACE

Connector part number
12047937
12066304
12059168
12048074
15324973

T3
Cab Ground

Connector part number
5/16 ring terminal

T1
Spare Ignition Pwr

Connector part number
12034047

T2
Spare Battery Pwr

Connector part number
12034047

NOTE: 1) USE ONLY WITH MOMENTUM CHASSIS INTERFACE HARNESS WITH 8 PIN INTERFACE CONNECTOR.
2) USE ONLY WHEN OEM CHASSIS HARNESS DOES NOT HAVE THE 8 PIN CHASSIS INTERFACE CONNECTOR

CONFIDENTIAL AND TRADE SECRET INFORMATION OF RUSH ENTERPRISES, INC.
This document and the information in it is confidential, proprietary and trade secret information of Rush Enterprises, Inc. and its subsidiaries ("Rush"). It contains information intended only for the person to whom it is transmitted and may not be disclosed to any third party, in whole or in part, or used to manufacture anything shown or referred to herein, without Rush's express, written permission. This document must be returned to Rush on request.

Any form of reproduction, dissemination, copying, disclosure, modification, distribution and or publication of this document and the information contained herein is strictly prohibited.

This notice must appear on any complete or partial reproduction of this document or the information contained herein.

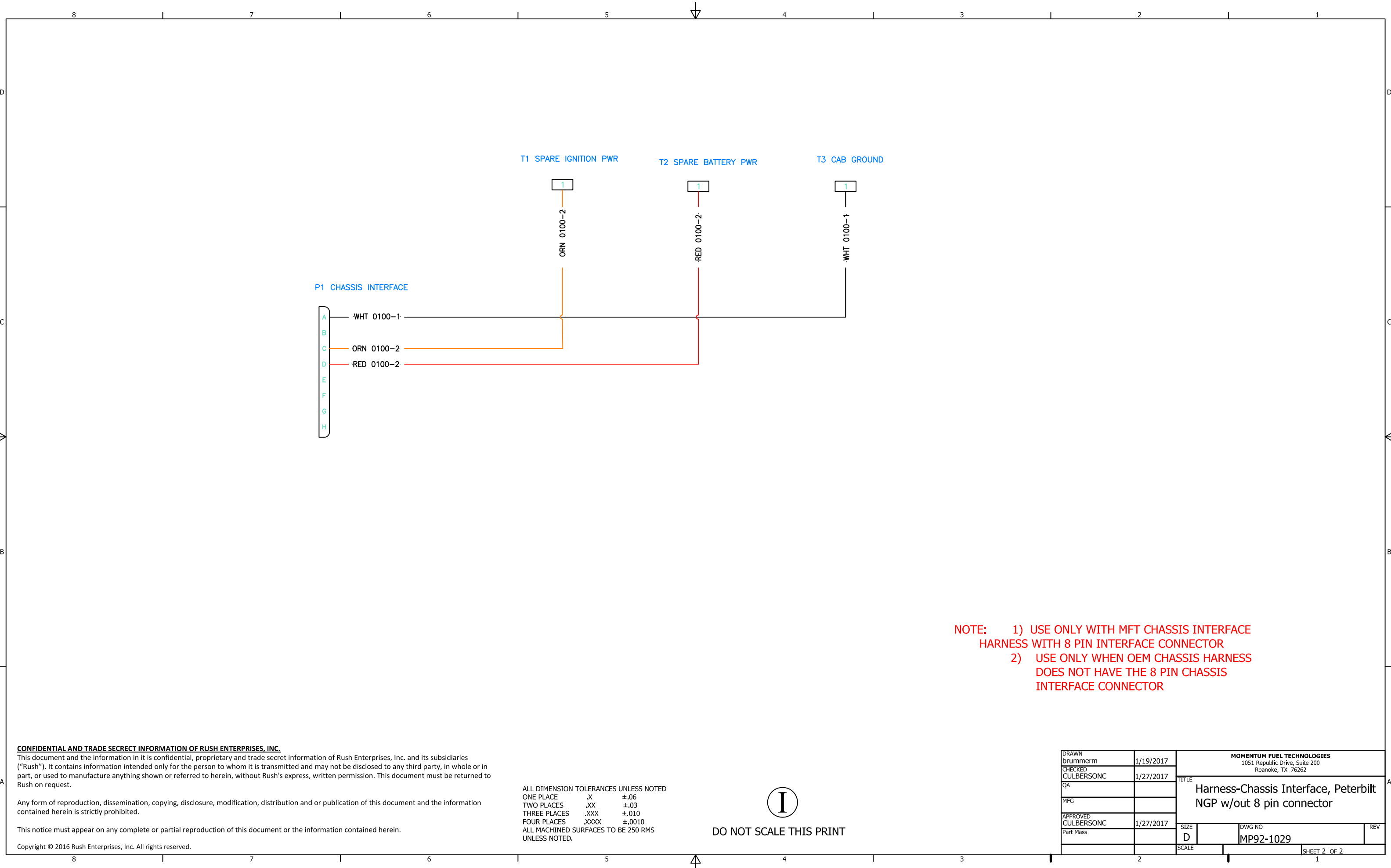
Copyright © 2016 Rush Enterprises, Inc. All rights reserved.

ALL DIMENSION TOLERANCES UNLESS NOTED
ONE PLACE .X ±.06
TWO PLACES .XX ±.03
THREE PLACES .XXX ±.010
FOUR PLACES .XXXX ±.0010
ALL MACHINED SURFACES TO BE 250 RMS UNLESS NOTED.



DO NOT SCALE THIS PRINT

DRAWN brummerm 1/19/2017	CHECKED CULBERSONC 1/27/2017	QA	MFG	APPROVED CULBERSONC 1/27/2017	Part Mass	MOMENTUM FUEL TECHNOLOGIES 1051 Republic Drive, Suite 200 Roanoke, TX 76262	
TITLE Harness-Chassis Interface, Peterbilt NGP w/out 8 pin connector						SIZE D	DWG NO MP92-1029
SCALE						REV	SHEET 1 OF 2



NOTE: 1) USE ONLY WITH MFT CHASSIS INTERFACE
HARNESS WITH 8 PIN INTERFACE CONNECTOR
2) USE ONLY WHEN OEM CHASSIS HARNESS
DOES NOT HAVE THE 8 PIN CHASSIS
INTERFACE CONNECTOR

CONFIDENTIAL AND TRADE SECRET INFORMATION OF RUSH ENTERPRISES, INC.

This document and the information in it is confidential, proprietary and trade secret information of Rush Enterprises, Inc. and its subsidiaries ("Rush"). It contains information intended only for the person to whom it is transmitted and may not be disclosed to any third party, in whole or in part, or used to manufacture anything shown or referred to herein, without Rush's express, written permission. This document must be returned to Rush on request.

Any form of reproduction, dissemination, copying, disclosure, modification, distribution and or publication of this document and the information contained herein is strictly prohibited.

This notice must appear on any complete or partial reproduction of this document or the information contained herein.

Copyright © 2016 Rush Enterprises, Inc. All rights reserved.

ALL DIMENSION TOLERANCES UNLESS NOTED
 ONE PLACE .X ±.06
 TWO PLACES .XX ±.03
 THREE PLACES .XXX ±.010
 FOUR PLACES .XXXX ±.0010
 ALL MACHINED SURFACES TO BE 250 RMS UNLESS NOTED.



DO NOT SCALE THIS PRINT

DRAWN brummern	1/19/2017	MOMENTUM FUEL TECHNOLOGIES 1051 Republic Drive, Suite 200 Roanoke, TX 76262	
CHECKED CULBERSONC	1/27/2017		
QA		TITLE Harness-Chassis Interface, Peterbilt NGP w/out 8 pin connector	
MFG		SIZE D	REV
APPROVED CULBERSONC	1/27/2017	DWG NO MP92-1029	
Part Mass		SCALE	SHEET 2 OF 2