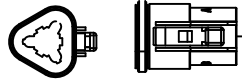


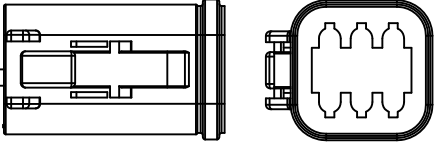
REVISION HISTORY				
ZONE	REV	DESCRIPTION	APPROVED	DATE
B3	A	CHANGED WIRE NAME	CBC	3/16/2017
C5	B	CHANGED WIRE LENGTH	CBC	3/28/2017
B3	C1	CHANGED WIRE LENGTH	CBC	4/25/2017
B3	C2	CHANGED WIRE LENGTH	CBC	5/4/2017
A4	C3	CHANGED TO SPLIT LOOM INSTEAD OF PVC YARN	CBC	5/4/2017
B3	D	CHANGED WIRE LENGTH		

**P1 J1939 SIGNAL**

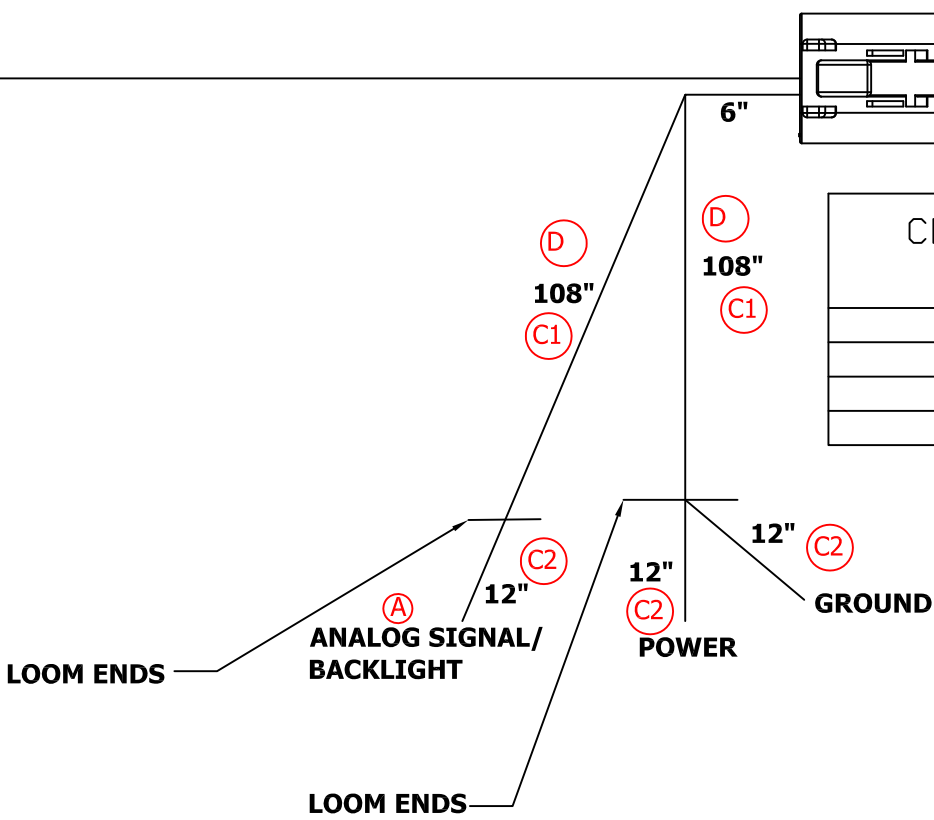


CONNECTOR PART NUMBER
DT06-3S
0462-209-16141
W3S
114017

**P2 FUEL GAUGE**



CONNECTOR PART NUMBER
DT06-6S
0462-209-16141
W6S
114017



**CONFIDENTIAL AND TRADE SECRET INFORMATION OF NATURAL GAS FUEL SYSTEMS, INC. dba MOMENTUM FUEL TECHNOLOGIES**  
 This document and the information in it is confidential, proprietary and trade secret information of Natural Gas Fuel Systems, Inc. dba Momentum Fuel Technologies on behalf of itself and its subsidiaries and affiliates ("Momentum"). It contains information intended only for the person to whom it is transmitted and may not be disclosed to any third party, in whole or in part, or used to manufacture anything shown or referred to herein, without Momentum's express, written permission. This document must be returned to Momentum on request.

Any form of reproduction, dissemination, copying, disclosure, modification, distribution, and or publication of this document and the information contained herein is strictly prohibited.

This notice must appear on any complete or partial reproduction of this document or the information contained herein.

Copyright © 2016 Natural Gas Fuel Systems, Inc. dba Momentum Fuel Technologies. All rights reserved.

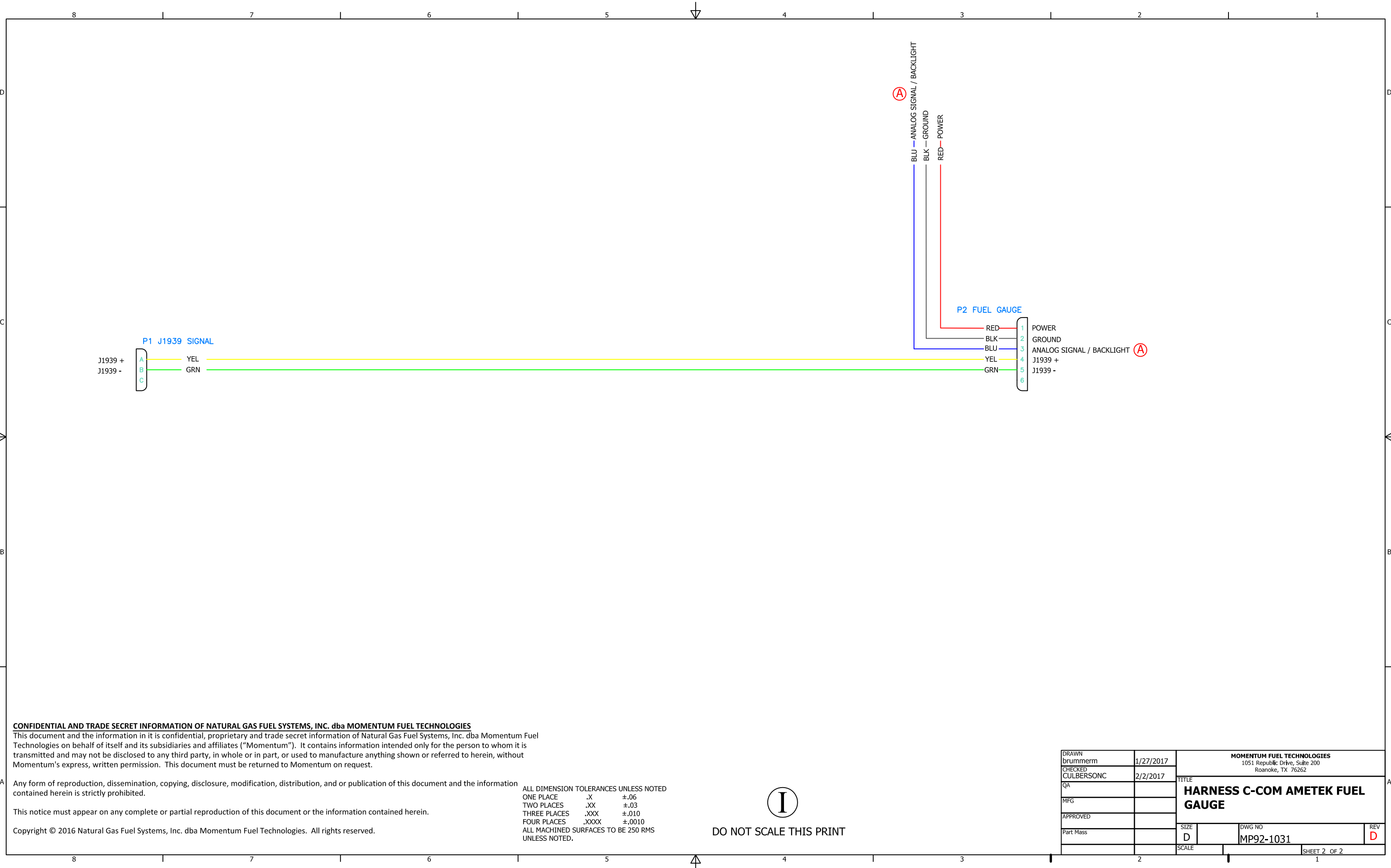
ALL DIMENSION TOLERANCES UNLESS NOTED  
 ONE PLACE .X ±.06  
 TWO PLACES .XX ±.03  
 THREE PLACES .XXX ±.010  
 FOUR PLACES .XXXX ±.0010  
 ALL MACHINED SURFACES TO BE 250 RMS UNLESS NOTED.

- NOTES:**
- (C3) 1) HARNESS TO BE COVERED WITH SPLIT LOOM.
  - 2) WIRES TO BE 18 GA TXL
  - 3) ANALOG SIGNAL / BACKLIGHT TO BE CONVOLUTED TUBING



DO NOT SCALE THIS PRINT

DRAWN brummern 1/27/2017	MOMENTUM FUEL TECHNOLOGIES 1051 Republic Drive, Suite 200 Roanoke, TX 76262	
CHECKED CULBERSONC 2/2/2017	TITLE <b>HARNESS C-COM AMETEK FUEL GAUGE</b>	
QA	SIZE D	REV D
MFG	DWG NO MP92-1031	
APPROVED CULBERSONC 2/2/2017	SCALE	SHEET 1 OF 2
Part Mass		



**CONFIDENTIAL AND TRADE SECRET INFORMATION OF NATURAL GAS FUEL SYSTEMS, INC. dba MOMENTUM FUEL TECHNOLOGIES**

This document and the information in it is confidential, proprietary and trade secret information of Natural Gas Fuel Systems, Inc. dba Momentum Fuel Technologies on behalf of itself and its subsidiaries and affiliates ("Momentum"). It contains information intended only for the person to whom it is transmitted and may not be disclosed to any third party, in whole or in part, or used to manufacture anything shown or referred to herein, without Momentum's express, written permission. This document must be returned to Momentum on request.

Any form of reproduction, dissemination, copying, disclosure, modification, distribution, and or publication of this document and the information contained herein is strictly prohibited.

This notice must appear on any complete or partial reproduction of this document or the information contained herein.

Copyright © 2016 Natural Gas Fuel Systems, Inc. dba Momentum Fuel Technologies. All rights reserved.

ALL DIMENSION TOLERANCES UNLESS NOTED  
 ONE PLACE .X ±.06  
 TWO PLACES .XX ±.03  
 THREE PLACES .XXX ±.010  
 FOUR PLACES .XXXX ±.0010  
 ALL MACHINED SURFACES TO BE 250 RMS UNLESS NOTED.



DO NOT SCALE THIS PRINT

DRAWN brummerrm	1/27/2017	<b>MOMENTUM FUEL TECHNOLOGIES</b> 1051 Republic Drive, Suite 200 Roanoke, TX 76262	
CHECKED CULBERSONC	2/2/2017		
QA		TITLE <b>HARNES C-COM AMETEK FUEL GAUGE</b>	
MFG			
APPROVED			
Part Mass		SIZE D	REV D
		DWG NO MP92-1031	
		SCALE	SHEET 2 OF 2