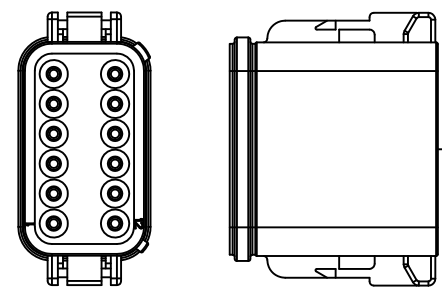


8 7 6 5 4 3 2 1

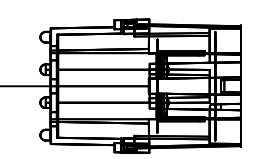


P1: CHASSIS INTERFACE  
DEUTSCH DT06-12SA W12S  
PLUG OPEN HOLES

TERMINAL	WIRE	WIRE SIZE
1	RED	18 AWG TXL
2	DRN	18 AWG TXL
3	WHT	18 AWG TXL
4	N/A	N/A
5	N/A	N/A
6	N/A	N/A
7	N/A	N/A
8	N/A	N/A
9	N/A	N/A
10	N/A	N/A
11	N/A	N/A
12	N/A	N/A

PLUG ALL UNUSED CAVITIES

48"



J1: AUX POWER  
DELPHI 12010717

TERMINAL	WIRE	WIRE SIZE
A	RED	18 AWG TXL
C	DRN	18 AWG TXL
B	WHT	18 AWG TXL

**NOTES:**

- HARNES TO BE BRAIDED WITH VN4400S OR EQUIVALENT PVC COATED YARN**
- USE WITH AUTOCAR AND MP92-1028.**

**CONFIDENTIAL AND TRADE SECRET INFORMATION OF NATURAL GAS FUEL SYSTEMS, INC. dba MOMENTUM FUEL TECHNOLOGIES**  
This document and the information in it is confidential, proprietary and trade secret information of Natural Gas Fuel Systems, Inc. dba Momentum Fuel Technologies on behalf of itself and its subsidiaries and affiliates ("Momentum"). It contains information intended only for the person to whom it is transmitted and may not be disclosed to any third party, in whole or in part, or used to manufacture anything shown or referred to herein, without Momentum's express, written permission. This document must be returned to Momentum on request.

Any form of reproduction, dissemination, copying, disclosure, modification, distribution, and or publication of this document and the information contained herein is strictly prohibited.

This notice must appear on any complete or partial reproduction of this document or the information contained herein.

Copyright © 2016 Natural Gas Fuel Systems, Inc. dba Momentum Fuel Technologies. All rights reserved.

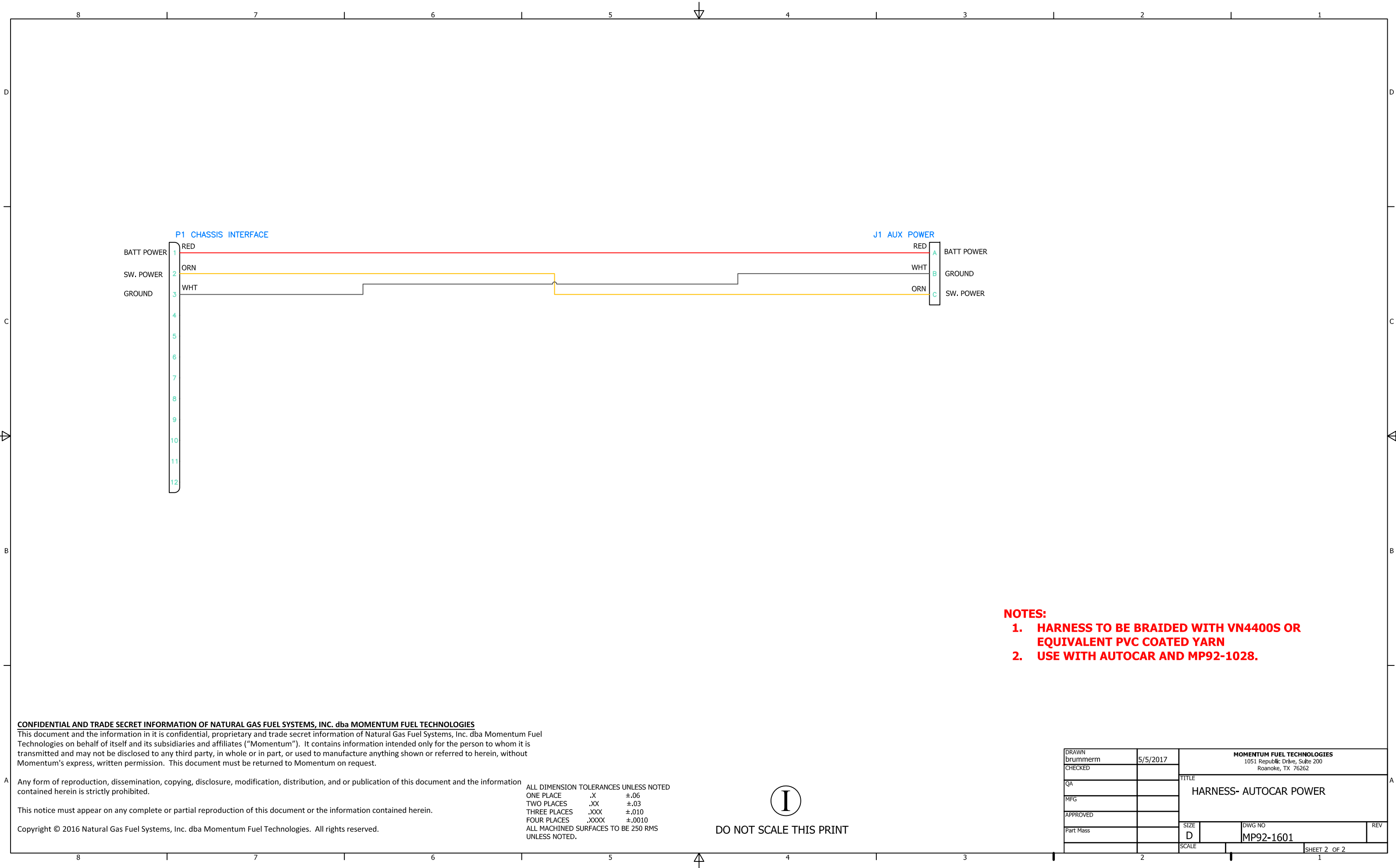
ALL DIMENSION TOLERANCES UNLESS NOTED  
 ONE PLACE .X ±.06  
 TWO PLACES .XX ±.03  
 THREE PLACES .XXX ±.010  
 FOUR PLACES .XXXX ±.0010  
 ALL MACHINED SURFACES TO BE 250 RMS UNLESS NOTED.



DO NOT SCALE THIS PRINT

DRAWN brummern	5/5/2017	<b>MOMENTUM FUEL TECHNOLOGIES</b> 1051 Republic Drive, Suite 200 Roanoke, TX 76262	
CHECKED CULBERSONC	5/5/2017	TITLE HARNES- AUTOCAR POWER	
QA			
MFG			
APPROVED CULBERSONC	5/5/2017	SIZE D	DWG NO MP92-1601
Part Mass		SCALE	REV
			SHEET 1 OF 2

8 7 6 5 4 3 2 1



- NOTES:**
- HARNES TO BE BRAIDED WITH VN4400S OR EQUIVALENT PVC COATED YARN**
  - USE WITH AUTOCAR AND MP92-1028.**

**CONFIDENTIAL AND TRADE SECRET INFORMATION OF NATURAL GAS FUEL SYSTEMS, INC. dba MOMENTUM FUEL TECHNOLOGIES**

This document and the information in it is confidential, proprietary and trade secret information of Natural Gas Fuel Systems, Inc. dba Momentum Fuel Technologies on behalf of itself and its subsidiaries and affiliates ("Momentum"). It contains information intended only for the person to whom it is transmitted and may not be disclosed to any third party, in whole or in part, or used to manufacture anything shown or referred to herein, without Momentum's express, written permission. This document must be returned to Momentum on request.

Any form of reproduction, dissemination, copying, disclosure, modification, distribution, and or publication of this document and the information contained herein is strictly prohibited.

This notice must appear on any complete or partial reproduction of this document or the information contained herein.

Copyright © 2016 Natural Gas Fuel Systems, Inc. dba Momentum Fuel Technologies. All rights reserved.

ALL DIMENSION TOLERANCES UNLESS NOTED  
 ONE PLACE .X ±.06  
 TWO PLACES .XX ±.03  
 THREE PLACES .XXX ±.010  
 FOUR PLACES .XXXX ±.0010  
 ALL MACHINED SURFACES TO BE 250 RMS UNLESS NOTED.



DO NOT SCALE THIS PRINT

DRAWN brummern	5/5/2017	<b>MOMENTUM FUEL TECHNOLOGIES</b> 1051 Republic Drive, Suite 200 Roanoke, TX 76262	
CHECKED		TITLE <b>HARNES- AUTOCAR POWER</b>	
QA		SIZE D	DWG NO MP92-1601
MFG		SCALE	REV
APPROVED		SHEET 2 OF 2	
Part Mass			