

P1

CHASSIS INTERFACE

Connector part number  
12047937  
12066304  
12059168  
12048074  
15324973

126"

8"

5"

5"

SPARE IGNITION POWER

SPARE GROUND

NOTE:  
1) LEAVE WIRES BARE ON THIS END

- NOTE:
- 1) USE ONLY WITH MOMENTUM CHASSIS INTERFACE HARNESS WITH 8 PIN INTERFACE CONNECTOR
  - 2) USE ONLY WHEN OEM CHASSIS HARNESS DOES NOT HAVE THE 8 PIN CHASSIS INTERFACE CONNECTOR
  - 3) ALL WIRES TO BE 18 AWGTXL
  - 4) COVER WIRES WITH SPLIT LOOM

CONFIDENTIAL AND TRADE SECRET INFORMATION OF RUSH ENTERPRISES, INC.

This document and the information in it is confidential, proprietary and trade secret information of Rush Enterprises, Inc. and its subsidiaries ("Rush"). It contains information intended only for the person to whom it is transmitted and may not be disclosed to any third party, in whole or in part, or used to manufacture anything shown or referred to herein, without Rush's express, written permission. This document must be returned to Rush on request.

Any form of reproduction, dissemination, copying, disclosure, modification, distribution and or publication of this document and the information contained herein is strictly prohibited.

This notice must appear on any complete or partial reproduction of this document or the information contained herein.

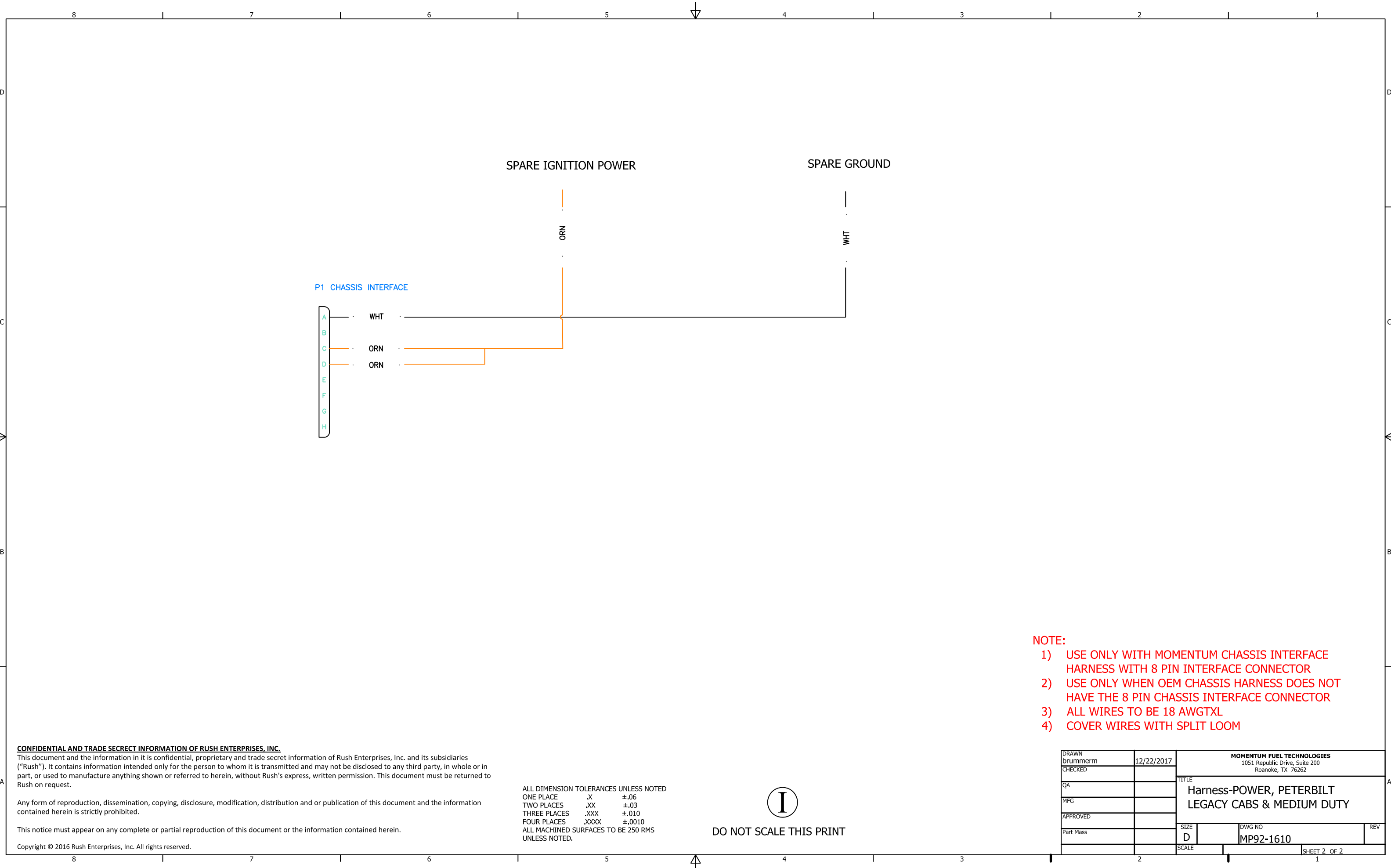
Copyright © 2016 Rush Enterprises, Inc. All rights reserved.

ALL DIMENSION TOLERANCES UNLESS NOTED  
ONE PLACE .X ±.06  
TWO PLACES .XX ±.03  
THREE PLACES .XXX ±.010  
FOUR PLACES .XXXX ±.0010  
ALL MACHINED SURFACES TO BE 250 RMS UNLESS NOTED.



DO NOT SCALE THIS PRINT

DRAWN brummern	12/22/2017	MOMENTUM FUEL TECHNOLOGIES 1051 Republic Drive, Suite 200 Roanoke, TX 76262	
CHECKED		TITLE Harness-POWER, PETERBILT LEGACY CABS & MEDIUM DUTY	
QA		SIZE D	DWG NO MP92-1610
MFG		SCALE	REV
APPROVED			
Part Mass			
		SHEET 1 OF 2	



P1 CHASSIS INTERFACE

A  
B  
C  
D  
E  
F  
G  
H

WHT  
ORN  
ORN

SPARE IGNITION POWER

SPARE GROUND

ORN

WHT

**NOTE:**

- 1) USE ONLY WITH MOMENTUM CHASSIS INTERFACE HARNESS WITH 8 PIN INTERFACE CONNECTOR
- 2) USE ONLY WHEN OEM CHASSIS HARNESS DOES NOT HAVE THE 8 PIN CHASSIS INTERFACE CONNECTOR
- 3) ALL WIRES TO BE 18 AWGTXL
- 4) COVER WIRES WITH SPLIT LOOM

**CONFIDENTIAL AND TRADE SECRET INFORMATION OF RUSH ENTERPRISES, INC.**  
 This document and the information in it is confidential, proprietary and trade secret information of Rush Enterprises, Inc. and its subsidiaries ("Rush"). It contains information intended only for the person to whom it is transmitted and may not be disclosed to any third party, in whole or in part, or used to manufacture anything shown or referred to herein, without Rush's express, written permission. This document must be returned to Rush on request.

Any form of reproduction, dissemination, copying, disclosure, modification, distribution and or publication of this document and the information contained herein is strictly prohibited.

This notice must appear on any complete or partial reproduction of this document or the information contained herein.

Copyright © 2016 Rush Enterprises, Inc. All rights reserved.

ALL DIMENSION TOLERANCES UNLESS NOTED  
 ONE PLACE .X ±.06  
 TWO PLACES .XX ±.03  
 THREE PLACES .XXX ±.010  
 FOUR PLACES .XXXX ±.0010  
 ALL MACHINED SURFACES TO BE 250 RMS UNLESS NOTED.



DO NOT SCALE THIS PRINT

DRAWN brummerm	12/22/2017	MOMENTUM FUEL TECHNOLOGIES 1051 Republic Drive, Suite 200 Roanoke, TX 76262		
CHECKED		TITLE Harness-POWER, PETERBILT LEGACY CABS & MEDIUM DUTY		
QA		SIZE D	DWG NO MP92-1610	REV
MFG		SCALE		
APPROVED				
Part Mass				
				SHEET 2 OF 2