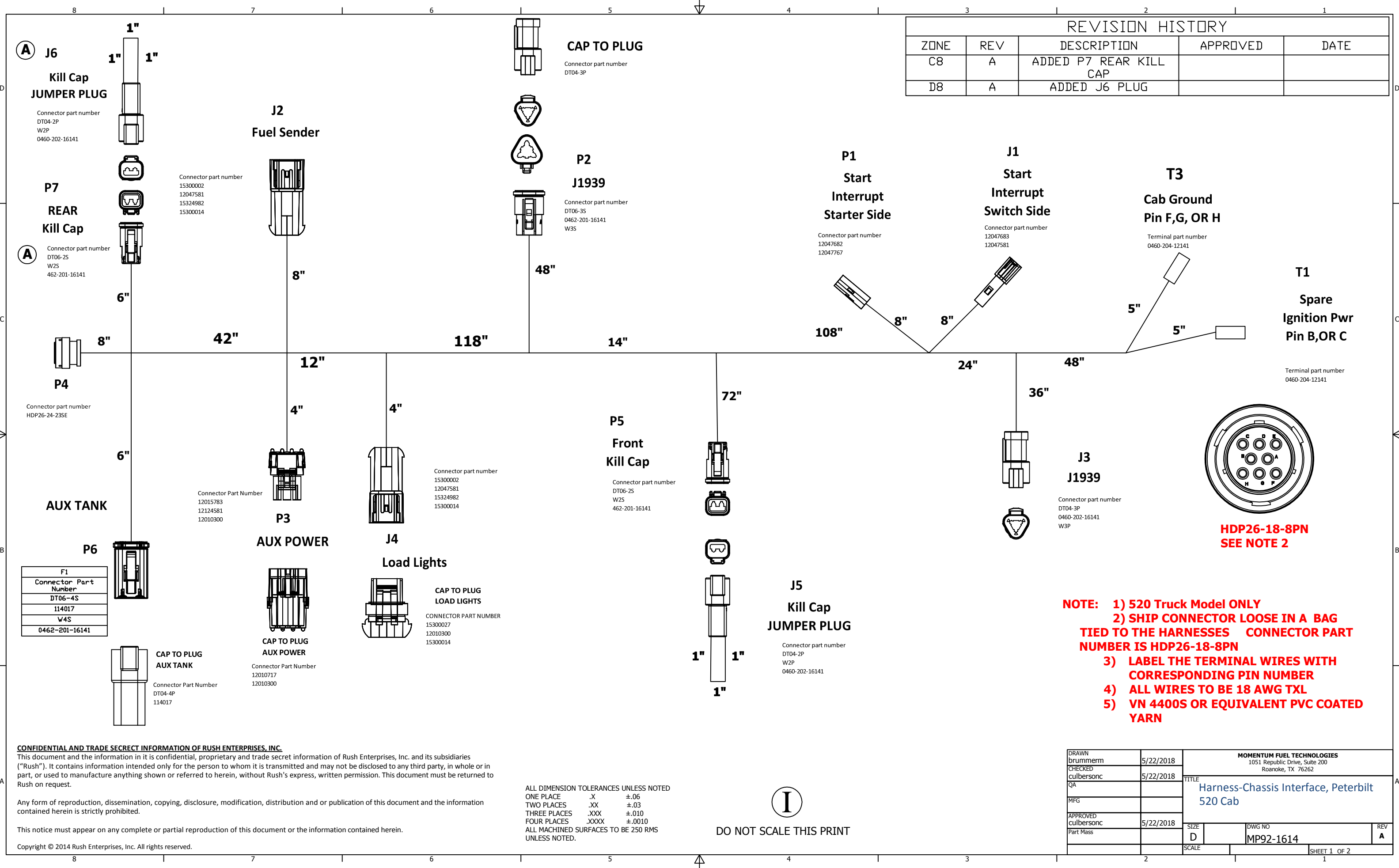
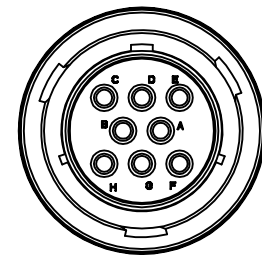


REVISION HISTORY				
ZONE	REV	DESCRIPTION	APPROVED	DATE
C8	A	ADDED P7 REAR KILL CAP		
D8	A	ADDED J6 PLUG		



NOTE:

- 1) 520 Truck Model ONLY
- 2) SHIP CONNECTOR LOOSE IN A BAG TIED TO THE HARNESSES CONNECTOR PART NUMBER IS HDP26-18-8PN
- 3) LABEL THE TERMINAL WIRES WITH CORRESPONDING PIN NUMBER
- 4) ALL WIRES TO BE 18 AWG TXL
- 5) VN 4400S OR EQUIVALENT PVC COATED YARN



**HDP26-18-8PN
SEE NOTE 2**

F1
Connector Part Number
DT06-4S
114017
W4S
0462-201-16141

CONFIDENTIAL AND TRADE SECRET INFORMATION OF RUSH ENTERPRISES, INC.
 This document and the information in it is confidential, proprietary and trade secret information of Rush Enterprises, Inc. and its subsidiaries ("Rush"). It contains information intended only for the person to whom it is transmitted and may not be disclosed to any third party, in whole or in part, or used to manufacture anything shown or referred to herein, without Rush's express, written permission. This document must be returned to Rush on request.

Any form of reproduction, dissemination, copying, disclosure, modification, distribution and or publication of this document and the information contained herein is strictly prohibited.

This notice must appear on any complete or partial reproduction of this document or the information contained herein.

Copyright © 2014 Rush Enterprises, Inc. All rights reserved.

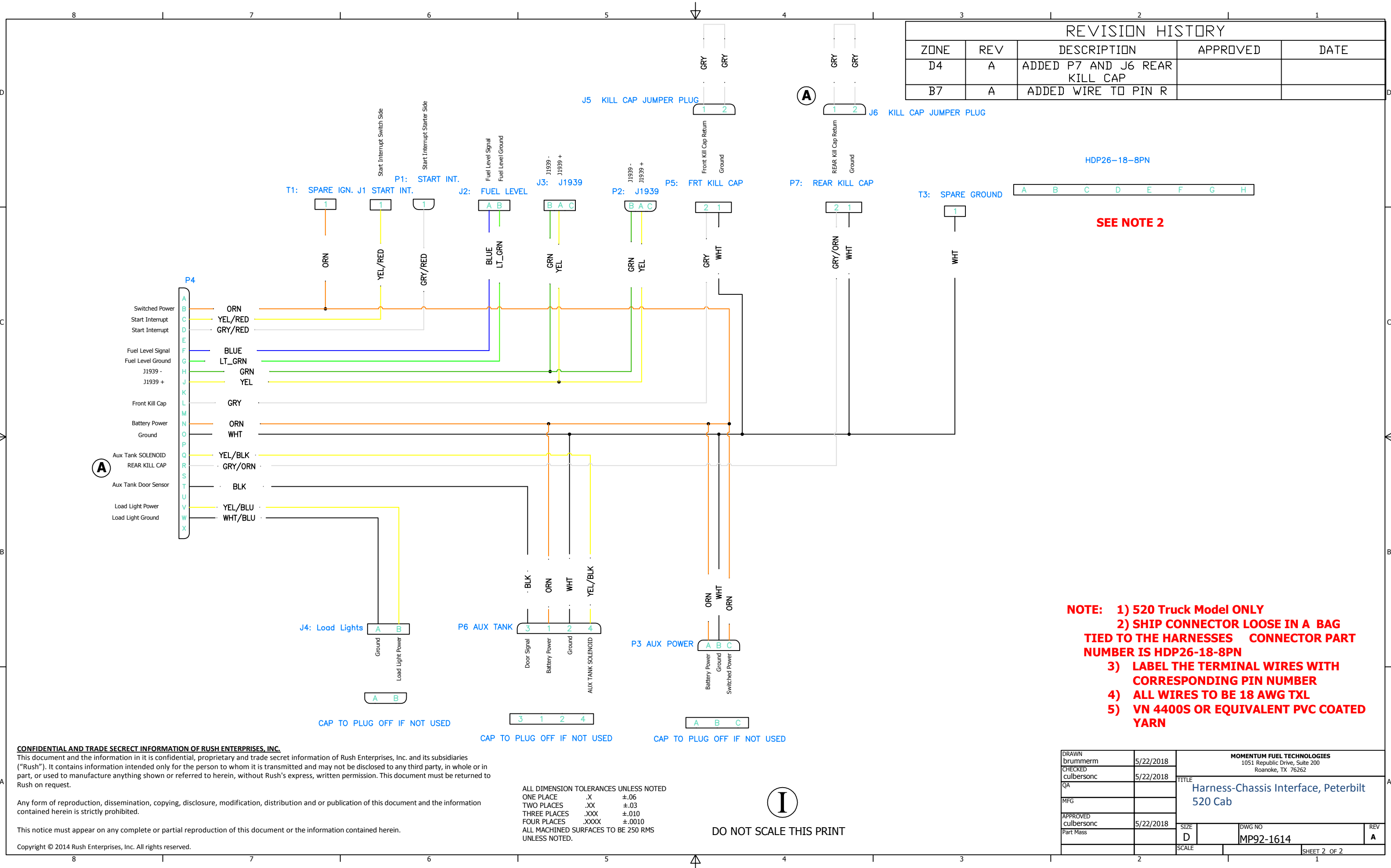
ALL DIMENSION TOLERANCES UNLESS NOTED
 ONE PLACE .X ±.06
 TWO PLACES .XX ±.03
 THREE PLACES .XXX ±.010
 FOUR PLACES .XXXX ±.0010
 ALL MACHINED SURFACES TO BE 250 RMS UNLESS NOTED.



DO NOT SCALE THIS PRINT

DRAWN brummern	5/22/2018	MOMENTUM FUEL TECHNOLOGIES 1051 Republic Drive, Suite 200 Roanoke, TX 76262		
CHECKED culbersonc	5/22/2018	TITLE Harness-Chassis Interface, Peterbilt 520 Cab		
QA		SIZE D	DWG NO MP92-1614	REV A
MFG		SCALE	SHEET 1 OF 2	
APPROVED culbersonc	5/22/2018			
Part Mass				

REVISION HISTORY				
ZONE	REV	DESCRIPTION	APPROVED	DATE
D4	A	ADDED P7 AND J6 REAR KILL CAP		
B7	A	ADDED WIRE TO PIN R		



HDP26-18-8PN

SEE NOTE 2

- NOTE:**
- 1) 520 Truck Model ONLY
 - 2) SHIP CONNECTOR LOOSE IN A BAG TIED TO THE HARNESSES CONNECTOR PART NUMBER IS HDP26-18-8PN
 - 3) LABEL THE TERMINAL WIRES WITH CORRESPONDING PIN NUMBER
 - 4) ALL WIRES TO BE 18 AWG TXL
 - 5) VN 4400S OR EQUIVALENT PVC COATED YARN

CONFIDENTIAL AND TRADE SECRET INFORMATION OF RUSH ENTERPRISES, INC.
 This document and the information in it is confidential, proprietary and trade secret information of Rush Enterprises, Inc. and its subsidiaries ("Rush"). It contains information intended only for the person to whom it is transmitted and may not be disclosed to any third party, in whole or in part, or used to manufacture anything shown or referred to herein, without Rush's express, written permission. This document must be returned to Rush on request.

Any form of reproduction, dissemination, copying, disclosure, modification, distribution and or publication of this document and the information contained herein is strictly prohibited.

This notice must appear on any complete or partial reproduction of this document or the information contained herein.

Copyright © 2014 Rush Enterprises, Inc. All rights reserved.

ALL DIMENSION TOLERANCES UNLESS NOTED
 ONE PLACE .X ±.06
 TWO PLACES .XX ±.03
 THREE PLACES .XXX ±.010
 FOUR PLACES .XXXX ±.0010
 ALL MACHINED SURFACES TO BE 250 RMS UNLESS NOTED.



DO NOT SCALE THIS PRINT

DRAWN brummerm	5/22/2018	MOMENTUM FUEL TECHNOLOGIES 1051 Republic Drive, Suite 200 Roanoke, TX 76262		
CHECKED culbersonc	5/22/2018	TITLE Harness-Chassis Interface, Peterbilt 520 Cab		
QA		SIZE D	DWG NO MP92-1614	REV A
APPROVED culbersonc	5/22/2018	SCALE	SHEET 2 OF 2	
Part Mass				