

Connector part number
15300002
12047581
15324982
15300014

CAP TO PLUG

Connector part number
DT04-3P

P2

J1939

Connector part number
DT06-3S
0462-201-16141
W3S

P1

Start Interrupt Starter Side

Connector part number
12047682
12047767

J1

Start Interrupt Switch Side

Connector part number
12047683
12047581

T3

Cab Ground Pin F,G, OR H

Terminal part number
0460-204-12141

T1

Spare Ignition Pwr Pin B,OR C

Terminal part number
0460-204-12141

P5

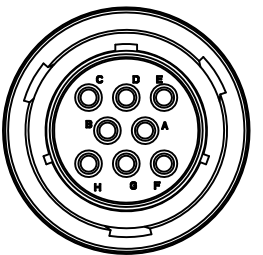
Front Kill Cap

Connector part number
DT06-2S
W2S
462-201-16141

J3

J1939

Connector part number
DT04-3P
0460-202-16141
W3P



**HDP26-18-8PN
SEE NOTE 2**

P6

Front Kill Cap

Connector part number
DT06-2S
W2S
462-201-16141

P7

Kill Cap JUMPER PLUG

Connector part number
DT04-2P
W2P
0460-202-16141

AUX TANK

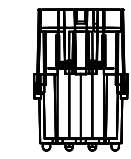
P6

F1
Connector Part Number
DT06-4S
114017
W4S
0462-201-16141

CAP TO PLUG AUX TANK

Connector Part Number
DT04-4P
114017

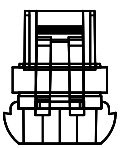
AUX POWER



CAP TO PLUG AUX POWER

Connector Part Number
12010717
12010300

Load Lights



CAP TO PLUG LOAD LIGHTS

CONNECTOR PART NUMBER
15300027
12010300
15300014

CONFIDENTIAL AND TRADE SECRET INFORMATION OF RUSH ENTERPRISES, INC.
This document and the information in it is confidential, proprietary and trade secret information of Rush Enterprises, Inc. and its subsidiaries ("Rush"). It contains information intended only for the person to whom it is transmitted and may not be disclosed to any third party, in whole or in part, or used to manufacture anything shown or referred to herein, without Rush's express, written permission. This document must be returned to Rush on request.

Any form of reproduction, dissemination, copying, disclosure, modification, distribution and or publication of this document and the information contained herein is strictly prohibited.

This notice must appear on any complete or partial reproduction of this document or the information contained herein.

Copyright © 2014 Rush Enterprises, Inc. All rights reserved.

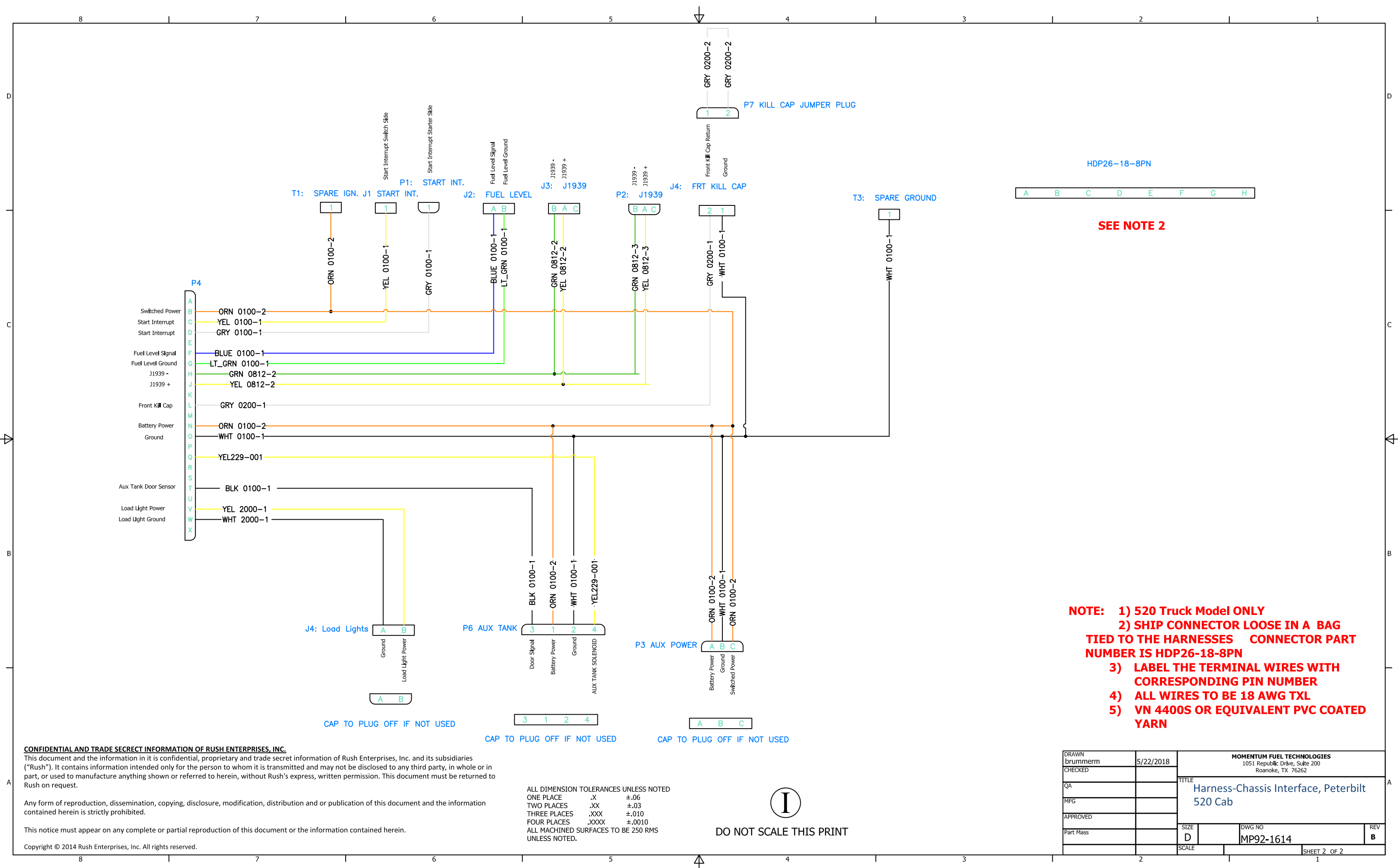
ALL DIMENSION TOLERANCES UNLESS NOTED
ONE PLACE .X ±.06
TWO PLACES .XX ±.03
THREE PLACES .XXX ±.010
FOUR PLACES .XXXX ±.0010
ALL MACHINED SURFACES TO BE 250 RMS UNLESS NOTED.



DO NOT SCALE THIS PRINT

- NOTE:**
- 1) 520 Truck Model ONLY
 - 2) SHIP CONNECTOR LOOSE IN A BAG TIED TO THE HARNESSES CONNECTOR PART NUMBER IS HDP26-18-8PN
 - 3) LABEL THE TERMINAL WIRES WITH CORRESPONDING PIN NUMBER
 - 4) ALL WIRES TO BE 18 AWG TXL
 - 5) VN 4400S OR EQUIVALENT PVC COATED YARN

DRAWN brummern	5/22/2018	MOMENTUM FUEL TECHNOLOGIES 1051 Republic Drive, Suite 200 Roanoke, TX 76262	
CHECKED		TITLE Harness-Chassis Interface, Peterbilt 520 Cab	
QA		SIZE D	DWG NO MP92-1614
MFG		SCALE	REV
APPROVED			
Part Mass			
		SHEET 1 OF 2	



HDP26-18-8PN
A B C D E F G H

SEE NOTE 2

NOTE:

- 1) 520 Truck Model ONLY
- 2) SHIP CONNECTOR LOOSE IN A BAG TIED TO THE HARNESSES CONNECTOR PART NUMBER IS HDP26-18-8PN
- 3) LABEL THE TERMINAL WIRES WITH CORRESPONDING PIN NUMBER
- 4) ALL WIRES TO BE 18 AWG TXL
- 5) VN 4400S OR EQUIVALENT PVC COATED YARN

CONFIDENTIAL AND TRADE SECRET INFORMATION OF RUSH ENTERPRISES, INC.
This document and the information in it is confidential, proprietary and trade secret information of Rush Enterprises, Inc. and its subsidiaries ("Rush"). It contains information intended only for the person to whom it is transmitted and may not be disclosed to any third party, in whole or in part, or used to manufacture anything shown or referred to herein, without Rush's express, written permission. This document must be returned to Rush on request.

Any form of reproduction, dissemination, copying, disclosure, modification, distribution and or publication of this document and the information contained herein is strictly prohibited.

This notice must appear on any complete or partial reproduction of this document or the information contained herein.

Copyright © 2014 Rush Enterprises, Inc. All rights reserved.

ALL DIMENSION TOLERANCES UNLESS NOTED
ONE PLACE .X ±.06
TWO PLACES .XX ±.03
THREE PLACES .XXX ±.010
FOUR PLACES .XXXX ±.0010
ALL MACHINED SURFACES TO BE 250 RMS UNLESS NOTED.



DO NOT SCALE THIS PRINT

DRAWN brummerm	5/22/2018	MOMENTUM FUEL TECHNOLOGIES 1051 Republic Drive, Suite 200 Roanoke, TX 76262	
CHECKED		TITLE Harness-Chassis Interface, Peterbilt 520 Cab	
QA		SIZE D	DWG NO MP92-1614
MFG		SCALE	REV B
APPROVED		SHEET 2 OF 2	
Part Mass			