

**J2 FMM INTERFACE
DEUTSCH DT04-12PA
W12P**

TERMINAL	WIRE	WIRE SIZE
1	N/A	N/A
2	ORN	18 AWG TXL
3	WHT	18 AWG TXL
4	BLU/RED	18 AWG TXL
5	BLU/WHT	18 AWG TXL
6	GRY/BLU	18 AWG TXL
7	N/A	N/A
8	YEL/BLU	18 AWG TXL
9	WHT	18 AWG TXL
10	N/A	N/A
11	N/A	N/A
12	N/A	N/A

**J6 BUMPER FILL JUMPER DEUTSCH
DT04-2P**

TERMINAL	WIRE	WIRE SIZE
1	GRY	18 AWG TXL
2	GRY	18 AWG TXL

P5 BUMPER FILL DEUTSCH DT06-2S

TERMINAL	WIRE	WIRE SIZE
1	WHT	18 AWG TXL
2	GRY	18 AWG TXL

J7 REAR FILL JUMPER DEUTSCH DT06-2S

TERMINAL	WIRE	WIRE SIZE
1	GRY/RED	18 AWG TXL
2	GRY/RED	18 AWG TXL

P6 REAR FILL DEUTSCH DT06-2S

TERMINAL	WIRE	WIRE SIZE
1	WHT	18 AWG TXL
2	GRY/RED	18 AWG TXL

**P1 ECU
DELPHI 12129225 W/
STRAIN RELF 21260848**

TERMINAL	WIRE	WIRE SIZE
1	N/A	N/A
2	ORN	18 AWG TXL
3	GRY/RED	18 AWG TXL
4	N/A	N/A
5	BLU/WHT	18 AWG TXL
6	N/A	N/A
7	N/A	N/A
8	GRN	18 AWG TXL
9	YEL	18 AWG TXL
10	GRY/BLK	18 AWG TXL
11	GRY/BLU	18 AWG TXL
12	N/A	N/A
13	ORN	18 AWG TXL
14	WHT	18 AWG TXL
15	GRY	18 AWG TXL
16	BLU/RED	18 AWG TXL
17	N/A	N/A
18	N/A	N/A
19	N/A	N/A
20	GRY/WHT	18 AWG TXL
21	N/A	N/A
22	GRY/ORN	18 AWG TXL
23	BRN	18 AWG TXL
24	N/A	N/A

J1 CHASSIS INTERFACE DEUTSCH HDP26-18-14PE

TERMINAL	WIRE	WIRE SIZE	TERMINAL	WIRE	WIRE SIZE
A	YEL	18 AWG TXL	H	N/A	N/A
B	GRN	18 AWG TXL	J	BRN	18 AWG TXL
C	DRN	18 AWG TXL	K	N/A	N/A
D	WHT	18 AWG TXL	L	N/A	N/A
E	N/A	N/A	M	N/A	N/A
F	N/A	N/A	N	N/A	N/A
G	BLU	18 AWG TXL	P	N/A	N/A

P4 AUX TANK 1 DEUTSCH DT06-4S

TERMINAL	WIRE	WIRE SIZE
1	DRN	18 AWG TXL
2	WHT	18 AWG TXL
3	GRY/BLK	18 AWG TXL
4	YEL/BLU	18 AWG TXL

P3 AUX TANK 2 DEUTSCH DT06-4S

TERMINAL	WIRE	WIRE SIZE
1	DRN	18 AWG TXL
2	WHT	18 AWG TXL
3	GRY/WHT	18 AWG TXL
4	YEL/BLU	18 AWG TXL

**J3 TERMINATING
RESISTOR
DEUTSCH DT04-3P**

TERMINAL	WIRE	WIRE SIZE
A	YEL	18 AWG TXL
B	GRN	18 AWG TXL
C	N/A	N/A

**P2 FUEL RELAY
DELPHI 12065686**

TERMINAL	WIRE	WIRE SIZE
30	ORN	18 AWG TXL
85	ORN	18 AWG TXL
86	GRY/ORN	18 AWG TXL
87A	N/A	N/A
87	YEL/BLU	18 AWG TXL

**J4 AUX TANK 1 JUMPER DEUTSCH
DT04-4P**

TERMINAL	WIRE	WIRE SIZE
1	DRN	18 AWG TXL
2	N/A	N/A
3	DRN	18 AWG TXL
4	N/A	N/A

**J5 AUX TANK 2 JUMPER DEUTSCH
DT04-4P**

TERMINAL	WIRE	WIRE SIZE
1	DRN	18 AWG TXL
2	N/A	N/A
3	DRN	18 AWG TXL
4	N/A	N/A

**J3 PLUG DEUTSCH
DT06-3S AND
SEALS**

NOTES:

- HARNESS TO BE BRAIDED WITH VN4400S OR EQUIVALENT PVC COATED YARN**
- USE WITH AUTOCAR VERTICAL FMM W/ ELECTRONICS**



DO NOT SCALE THIS PRINT

CONFIDENTIAL AND TRADE SECRET INFORMATION OF NATURAL GAS FUEL SYSTEMS, INC. dba MOMENTUM FUEL TECHNOLOGIES
This document and the information in it is confidential, proprietary and trade secret information of Natural Gas Fuel Systems, Inc. dba Momentum Fuel Technologies on behalf of itself and its subsidiaries and affiliates ("Momentum"). It contains information intended only for the person to whom it is transmitted and may not be disclosed to any third party, in whole or in part, or used to manufacture anything shown or referred to herein, without Momentum's express, written permission. This document must be returned to Momentum on request.

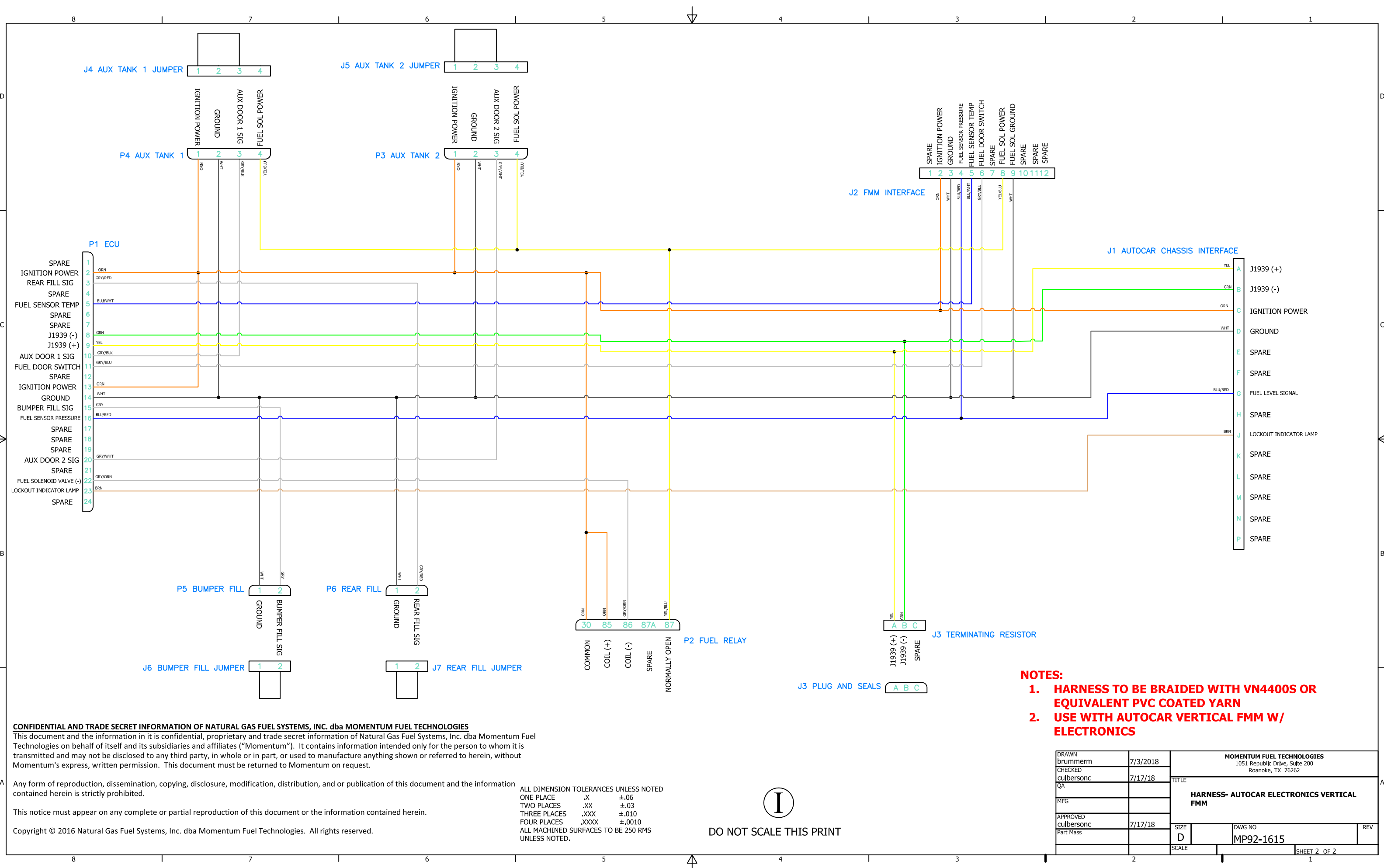
Any form of reproduction, dissemination, copying, disclosure, modification, distribution, and or publication of this document and the information contained herein is strictly prohibited.

This notice must appear on any complete or partial reproduction of this document or the information contained herein.

Copyright © 2016 Natural Gas Fuel Systems, Inc. dba Momentum Fuel Technologies. All rights reserved.

ALL DIMENSION TOLERANCES UNLESS NOTED
ONE PLACE .X ±.06
TWO PLACES .XX ±.03
THREE PLACES .XXX ±.010
FOUR PLACES .XXXX ±.0010
ALL MACHINED SURFACES TO BE 250 RMS UNLESS NOTED.

DRAWN brummern	7/3/2018	MOMENTUM FUEL TECHNOLOGIES 1051 Republic Drive, Suite 200 Roanoke, TX 76262	
CHECKED culbersonc	7/17/18	TITLE HARNESS- AUTOCAR ELECTRONICS VERTICAL FMM	
QA		SIZE D	DWG NO MP92-1615
MFG		SCALE	REV
APPROVED culbersonc	7/17/18	SHEET 1 OF 2	
Part Mass			



- NOTES:**
- HARNES TO BE BRAIDED WITH VN4400S OR EQUIVALENT PVC COATED YARN**
 - USE WITH AUTOCAR VERTICAL FMM W/ ELECTRONICS**

CONFIDENTIAL AND TRADE SECRET INFORMATION OF NATURAL GAS FUEL SYSTEMS, INC. dba MOMENTUM FUEL TECHNOLOGIES
 This document and the information in it is confidential, proprietary and trade secret information of Natural Gas Fuel Systems, Inc. dba Momentum Fuel Technologies on behalf of itself and its subsidiaries and affiliates ("Momentum"). It contains information intended only for the person to whom it is transmitted and may not be disclosed to any third party, in whole or in part, or used to manufacture anything shown or referred to herein, without Momentum's express, written permission. This document must be returned to Momentum on request.

Any form of reproduction, dissemination, copying, disclosure, modification, distribution, and or publication of this document and the information contained herein is strictly prohibited.

This notice must appear on any complete or partial reproduction of this document or the information contained herein.

Copyright © 2016 Natural Gas Fuel Systems, Inc. dba Momentum Fuel Technologies. All rights reserved.

ALL DIMENSION TOLERANCES UNLESS NOTED
 ONE PLACE .X ±.06
 TWO PLACES .XX ±.03
 THREE PLACES .XXX ±.010
 FOUR PLACES .XXXX ±.0010
 ALL MACHINED SURFACES TO BE 250 RMS UNLESS NOTED.

I
 DO NOT SCALE THIS PRINT

DRAWN brummern	7/3/2018	MOMENTUM FUEL TECHNOLOGIES 1051 Republic Drive, Suite 200 Roanoke, TX 76262		
CHECKED culbersonc	7/17/18			
QA		TITLE HARNES- AUTOCAR ELECTRONICS VERTICAL FMM		
MFG				
APPROVED culbersonc	7/17/18	SIZE D	DWG NO MP92-1615	REV
Part Mass		SCALE		SHEET 2 OF 2