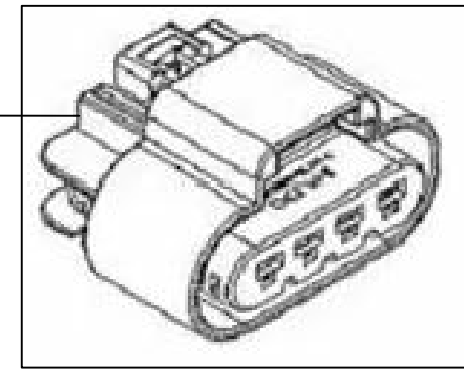
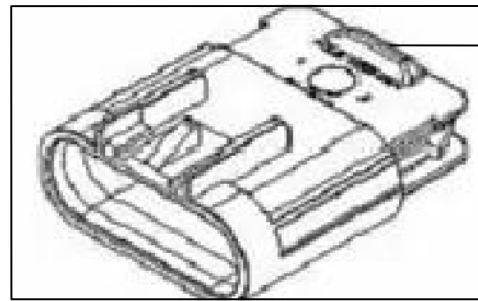


8 7 6 5 4 3 2 1

36"



J1 FUEL PUMP, CHASSIS SIDE DELPHI 15326633-B		
TERMINAL	WIRE	WIRE SIZE
A	BLK	18 AWG TXL
B	GRN	18 AWG TXL
C	GRY	18 AWG TXL
D	RED	18 AWG TXL

P1 FUEL PUMP, FUEL PUMP SIDE DELPHI 13521459		
TERMINAL	WIRE	WIRE SIZE
A	BLK	18 AWG TXL
B	GRN	18 AWG TXL
C	GRY	18 AWG TXL
D	RED	18 AWG TXL

CONFIDENTIAL AND TRADE SECRET INFORMATION OF NATURAL GAS FUEL SYSTEMS, INC. dba MOMENTUM FUEL TECHNOLOGIES
 This document and the information in it is confidential, proprietary and trade secret information of Natural Gas Fuel Systems, Inc. dba Momentum Fuel Technologies on behalf of itself and its subsidiaries and affiliates ("Momentum"). It contains information intended only for the person to whom it is transmitted and may not be disclosed to any third party, in whole or in part, or used to manufacture anything shown or referred to herein, without Momentum's express, written permission. This document must be returned to Momentum on request.

Any form of reproduction, dissemination, copying, disclosure, modification, distribution, and or publication of this document and the information contained herein is strictly prohibited.

This notice must appear on any complete or partial reproduction of this document or the information contained herein.

Copyright © 2016 Natural Gas Fuel Systems, Inc. dba Momentum Fuel Technologies. All rights reserved.

ALL DIMENSION TOLERANCES UNLESS NOTED
 ONE PLACE .X ±.06
 TWO PLACES .XX ±.03
 THREE PLACES .XXX ±.010
 FOUR PLACES .XXXX ±.0010
 ALL MACHINED SURFACES TO BE 250 RMS UNLESS NOTED.



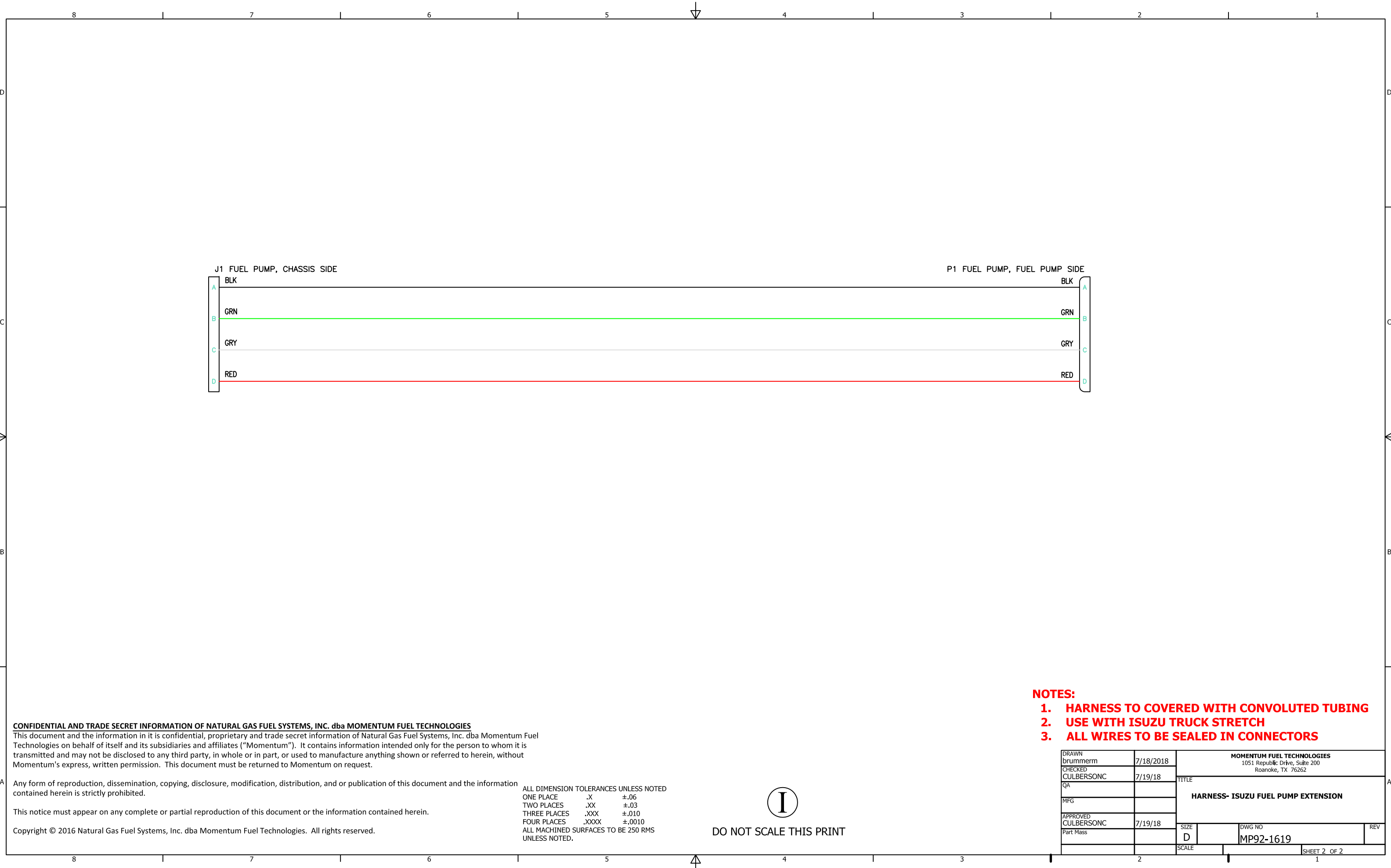
DO NOT SCALE THIS PRINT

NOTES:

- HARNES TO COVERED WITH CONVOLUTED TUBING**
- USE WITH ISUZU TRUCK STRETCH**
- ALL WIRES TO BE SEALED IN CONNECTORS**

DRAWN brummern	7/18/2018	MOMENTUM FUEL TECHNOLOGIES 1051 Republic Drive, Suite 200 Roanoke, TX 76262	
CHECKED CULBERSONC	7/19/18	TITLE	
QA		HARNES- ISUZU FUEL PUMP EXTENSION	
MFG		SIZE D	DWG NO MP92-1619
APPROVED CULBERSONC	7/19/18	SCALE	REV
Part Mass			
		SHEET 1 OF 2	

8 7 6 5 4 3 2 1



CONFIDENTIAL AND TRADE SECRET INFORMATION OF NATURAL GAS FUEL SYSTEMS, INC. dba MOMENTUM FUEL TECHNOLOGIES
 This document and the information in it is confidential, proprietary and trade secret information of Natural Gas Fuel Systems, Inc. dba Momentum Fuel Technologies on behalf of itself and its subsidiaries and affiliates ("Momentum"). It contains information intended only for the person to whom it is transmitted and may not be disclosed to any third party, in whole or in part, or used to manufacture anything shown or referred to herein, without Momentum's express, written permission. This document must be returned to Momentum on request.

Any form of reproduction, dissemination, copying, disclosure, modification, distribution, and or publication of this document and the information contained herein is strictly prohibited.

This notice must appear on any complete or partial reproduction of this document or the information contained herein.

Copyright © 2016 Natural Gas Fuel Systems, Inc. dba Momentum Fuel Technologies. All rights reserved.

ALL DIMENSION TOLERANCES UNLESS NOTED
 ONE PLACE .X ±.06
 TWO PLACES .XX ±.03
 THREE PLACES .XXX ±.010
 FOUR PLACES .XXXX ±.0010
 ALL MACHINED SURFACES TO BE 250 RMS UNLESS NOTED.



DO NOT SCALE THIS PRINT

- NOTES:**
- 1. HARNESS TO COVERED WITH CONVOLUTED TUBING**
 - 2. USE WITH ISUZU TRUCK STRETCH**
 - 3. ALL WIRES TO BE SEALED IN CONNECTORS**

DRAWN brummern	7/18/2018	MOMENTUM FUEL TECHNOLOGIES 1051 Republic Drive, Suite 200 Roanoke, TX 76262	
CHECKED CULBERSONC	7/19/18		
QA		TITLE HARNESS- ISUZU FUEL PUMP EXTENSION	
MFG			
APPROVED CULBERSONC	7/19/18	SIZE D	DWG NO MP92-1619
Part Mass		SCALE	REV
			SHEET 2 OF 2