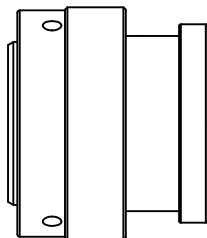
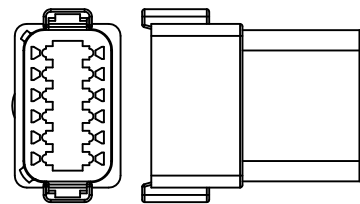


**J6 FMM CHASSIS INTERFACE CONNECTION  
DEUTSCH DT04-12PA W12P**

TERMINAL	WIRE	WIRE SIZE	TERMINAL	WIRE	WIRE SIZE
1	N/A	N/A	7	N/A	N/A
2	N/A	N/A	8	N/A	N/A
3	N/A	N/A	9	N/A	N/A
4	BLU/RED	18 AWG TXL	10	N/A	N/A
5	N/A	N/A	11	N/A	N/A
6	N/A	N/A	12	N/A </td <td>N/A</td>	N/A



12"

6"

(A)

**J5 REAR FILL DEUTSCH DT04-2P**

TERMINAL	WIRE	WIRE SIZE
1	WHT	18 AWG TXL
2	GRY/RED	18 AWG TXL

(A)

**P5 REAR FILL JUMPER DEUTSCH DT06-2S**

TERMINAL	WIRE	WIRE SIZE
1	GRY/RED	18 AWG TXL
2	GRY/RED	18 AWG TXL

(A)

**J4 BUMPER FILL DEUTSCH DT04-2P**

TERMINAL	WIRE	WIRE SIZE
1	WHT	18 AWG TXL
2	GRY	18 AWG TXL

(A)

**P4 BUMPER FILL JUMPER DEUTSCH DT06-2S**

TERMINAL	WIRE	WIRE SIZE
1	GRY	18 AWG TXL
2	GRY	18 AWG TXL

**REVISION HISTORY**

ZONE	REV	DESCRIPTION	APPROVED	DATE
D5	A	SWITCHED CONNECTORS JUMPER AND HARNESS NOW DT06-2S		
D3	A	SWITCHED CONNECTORS JUMPER AND HARNESS NOW DT06-2S		
D5	A	SWITCHED CONNECTORS JUMPER AND HARNESS NOW DT04-2P		
D3	A	SWITCHED CONNECTORS JUMPER AND HARNESS NOW DT04-2P		

**P1 FMM INTERFACE DEUTSCH HDP26-24-23SE**

TERMINAL	WIRE	WIRE SIZE	TERMINAL	WIRE	WIRE SIZE
A	N/A	N/A	N	N/A	
B	ORN	18 AWG TXL	Q	WHT	18 AWG TXL
C	N/A	N/A	P	N/A	N/A
D	N/A	N/A	Q	YEL/BLU	18 AWG TXL
E	N/A	N/A	R	GRY/RED	18 AWG TXL
F	N/A	N/A	S	N/A	N/A
G	N/A	N/A	T	GRY/BLK	18 AWG TXL
H	GRN	18 AWG TXL	U	GRY/WHT	18 AWG TXL
J	YEL	18 AWG TXL	V	N/A	N/A
K	N/A	N/A	W	N/A	N/A
L	GRY	18 AWG TXL	X	BRN	18 AWG TXL
M	N/A	N/A			

**J1 CHASSIS INTERFACE DEUTSCH HDP26-18-14PE**

TERMINAL	WIRE	WIRE SIZE	TERMINAL	WIRE	WIRE SIZE
A	YEL	18 AWG TXL	H	N/A	N/A
B	GRN	18 AWG TXL	J	BRN	18 AWG TXL
C	DRN	18 AWG TXL	K	N/A	N/A
D	WHT	18 AWG TXL	L	N/A	N/A
E	N/A	N/A	M	N/A	N/A
F	N/A	N/A	N	N/A	N/A
G	BLU	18 AWG TXL	P	N/A	N/A

**P3 AUX TANK 2 DEUTSCH DT06-4S**

TERMINAL	WIRE	WIRE SIZE
1	DRN	18 AWG TXL
2	WHT	18 AWG TXL
3	GRY/WHT	18 AWG TXL
4	YEL/BLU	18 AWG TXL

**P2 AUX TANK 1 DEUTSCH DT06-4S**

TERMINAL	WIRE	WIRE SIZE
1	DRN	18 AWG TXL
2	WHT	18 AWG TXL
3	GRY/BLK	18 AWG TXL
4	YEL/BLU	18 AWG TXL

**J3 AUX TANK 2 JUMPER DEUTSCH DT04-4P**

TERMINAL	WIRE	WIRE SIZE
1	DRN	18 AWG TXL
2	N/A	N/A
3	DRN	18 AWG TXL
4	N/A	N/A

**J2 AUX TANK 1 JUMPER DEUTSCH DT04-4P**

TERMINAL	WIRE	WIRE SIZE
1	DRN	18 AWG TXL
2	N/A	N/A
3	DRN	18 AWG TXL
4	N/A	N/A

**NOTES:**

- HARNESS TO BE BRAIDED WITH VN4400S OR EQUIVALENT PVC COATED YARN**
- USE WITH VERTICAL FMM W/ ELECTRONICS FOR AUTOCAR**

**CONFIDENTIAL AND TRADE SECRET INFORMATION OF NATURAL GAS FUEL SYSTEMS, INC. dba MOMENTUM FUEL TECHNOLOGIES**  
 This document and the information in it is confidential, proprietary and trade secret information of Natural Gas Fuel Systems, Inc. dba Momentum Fuel Technologies on behalf of itself and its subsidiaries and affiliates ("Momentum"). It contains information intended only for the person to whom it is transmitted and may not be disclosed to any third party, in whole or in part, or used to manufacture anything shown or referred to herein, without Momentum's express, written permission. This document must be returned to Momentum on request.

Any form of reproduction, dissemination, copying, disclosure, modification, distribution, and or publication of this document and the information contained herein is strictly prohibited.

This notice must appear on any complete or partial reproduction of this document or the information contained herein.

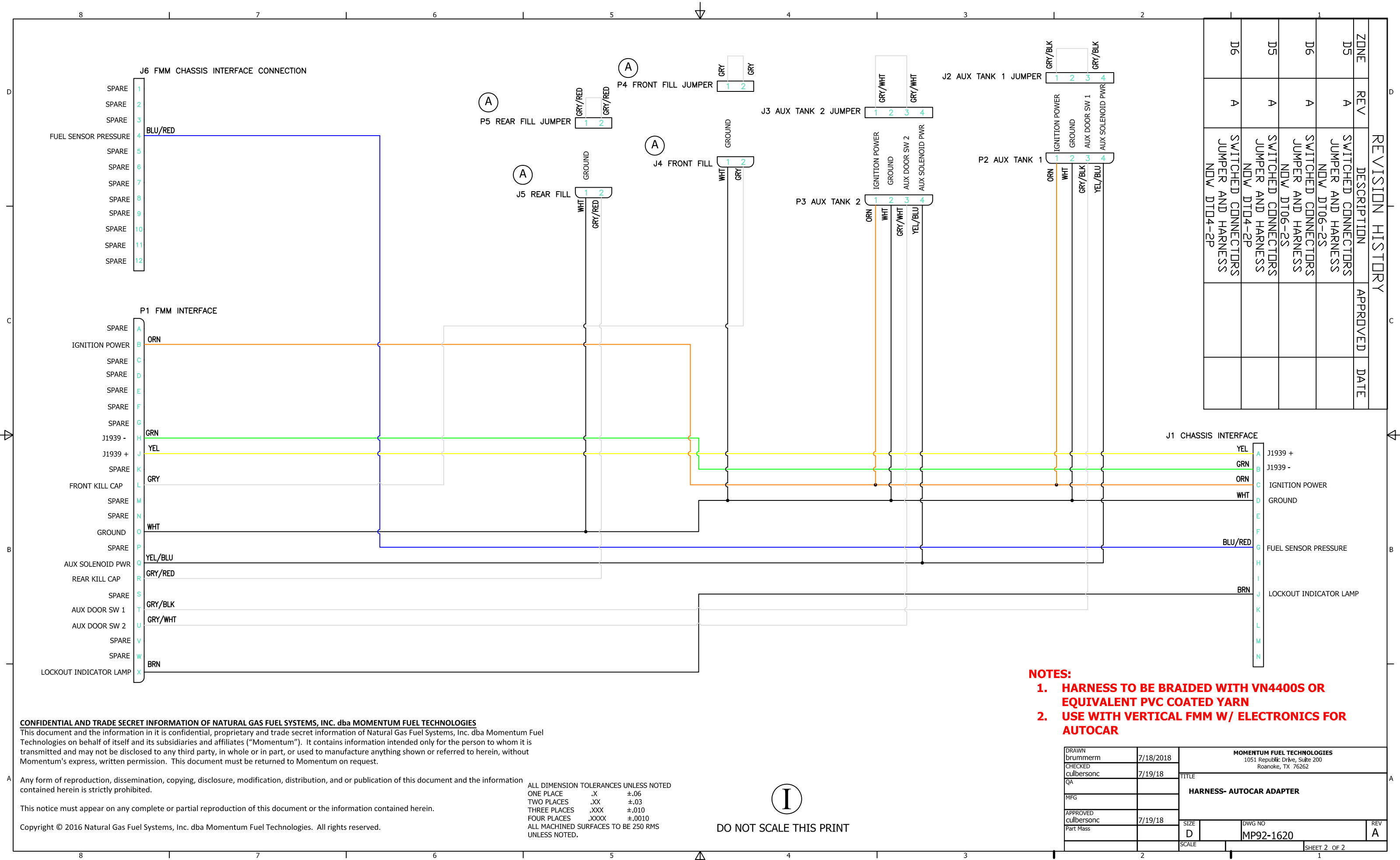
Copyright © 2016 Natural Gas Fuel Systems, Inc. dba Momentum Fuel Technologies. All rights reserved.

ALL DIMENSION TOLERANCES UNLESS NOTED  
 ONE PLACE .X ±.06  
 TWO PLACES .XX ±.03  
 THREE PLACES .XXX ±.010  
 FOUR PLACES .XXXX ±.0010  
 ALL MACHINED SURFACES TO BE 250 RMS UNLESS NOTED.



DO NOT SCALE THIS PRINT

DRAWN brummern	7/18/2018	MOMENTUM FUEL TECHNOLOGIES 1051 Republic Drive, Suite 200 Roanoke, TX 76262	
CHECKED culbersonc	7/19/18	TITLE <b>HARNESS- AUTOCAR ADAPTER</b>	
QA		SIZE D	DWG NO MP92-1620
MFG		SCALE	REV A
APPROVED culbersonc	7/19/18	SHEET 1 OF 2	
Part Mass			



REVISION HISTORY			APPROVED	DATE
ZONE	REV	DESCRIPTION		
D5	A	SWITCHED CONNECTORS JUMPER AND HARNESS NDW DT06-2S		
D6	A	SWITCHED CONNECTORS JUMPER AND HARNESS NDW DT06-2S		
D5	A	SWITCHED CONNECTORS JUMPER AND HARNESS NDW DT04-2P		
D6	A	SWITCHED CONNECTORS JUMPER AND HARNESS NDW DT04-2P		

- NOTES:**
- HARNES TO BE BRAIDED WITH VN4400S OR EQUIVALENT PVC COATED YARN**
  - USE WITH VERTICAL FMM W/ ELECTRONICS FOR AUTOCAR**

**CONFIDENTIAL AND TRADE SECRET INFORMATION OF NATURAL GAS FUEL SYSTEMS, INC. dba MOMENTUM FUEL TECHNOLOGIES**  
 This document and the information in it is confidential, proprietary and trade secret information of Natural Gas Fuel Systems, Inc. dba Momentum Fuel Technologies on behalf of itself and its subsidiaries and affiliates ("Momentum"). It contains information intended only for the person to whom it is transmitted and may not be disclosed to any third party, in whole or in part, or used to manufacture anything shown or referred to herein, without Momentum's express, written permission. This document must be returned to Momentum on request.

Any form of reproduction, dissemination, copying, disclosure, modification, distribution, and or publication of this document and the information contained herein is strictly prohibited.

This notice must appear on any complete or partial reproduction of this document or the information contained herein.

Copyright © 2016 Natural Gas Fuel Systems, Inc. dba Momentum Fuel Technologies. All rights reserved.

ALL DIMENSION TOLERANCES UNLESS NOTED

ONE PLACE	.X	±.06
TWO PLACES	.XX	±.03
THREE PLACES	.XXX	±.010
FOUR PLACES	.XXXX	±.0010

ALL MACHINED SURFACES TO BE 250 RMS UNLESS NOTED.



DO NOT SCALE THIS PRINT

DRAWN brummers	7/18/2018	MOMENTUM FUEL TECHNOLOGIES 1051 Republic Drive, Suite 200 Roanoke, TX 76262	
CHECKED culbersonc	7/19/18	TITLE <b>HARNES- AUTOCAR ADAPTER</b>	
QA			
MFG			
APPROVED culbersonc	7/19/18	SIZE D	DWG NO MP92-1620
Part Mass		SCALE	REV A
		SHEET 2 OF 2	