

CONFIDENTIAL AND TRADE SECRET INFORMATION OF NATURAL GAS FUEL SYSTEMS, INC. dba MOMENTUM FUEL TECHNOLOGIES
 This document and the information in it is confidential, proprietary and trade secret information of Natural Gas Fuel Systems, Inc. dba Momentum Fuel Technologies on behalf of itself and its subsidiaries and affiliates ("Momentum"). It contains information intended only for the person to whom it is transmitted and may not be disclosed to any third party, in whole or in part, or used to manufacture anything shown or referred to herein, without Momentum's express, written permission. This document must be returned to Momentum on request.

Any form of reproduction, dissemination, copying, disclosure, modification, distribution, and or publication of this document and the information contained herein is strictly prohibited.

This notice must appear on any complete or partial reproduction of this document or the information contained herein.

Copyright © 2016 Natural Gas Fuel Systems, Inc. dba Momentum Fuel Technologies. All rights reserved.

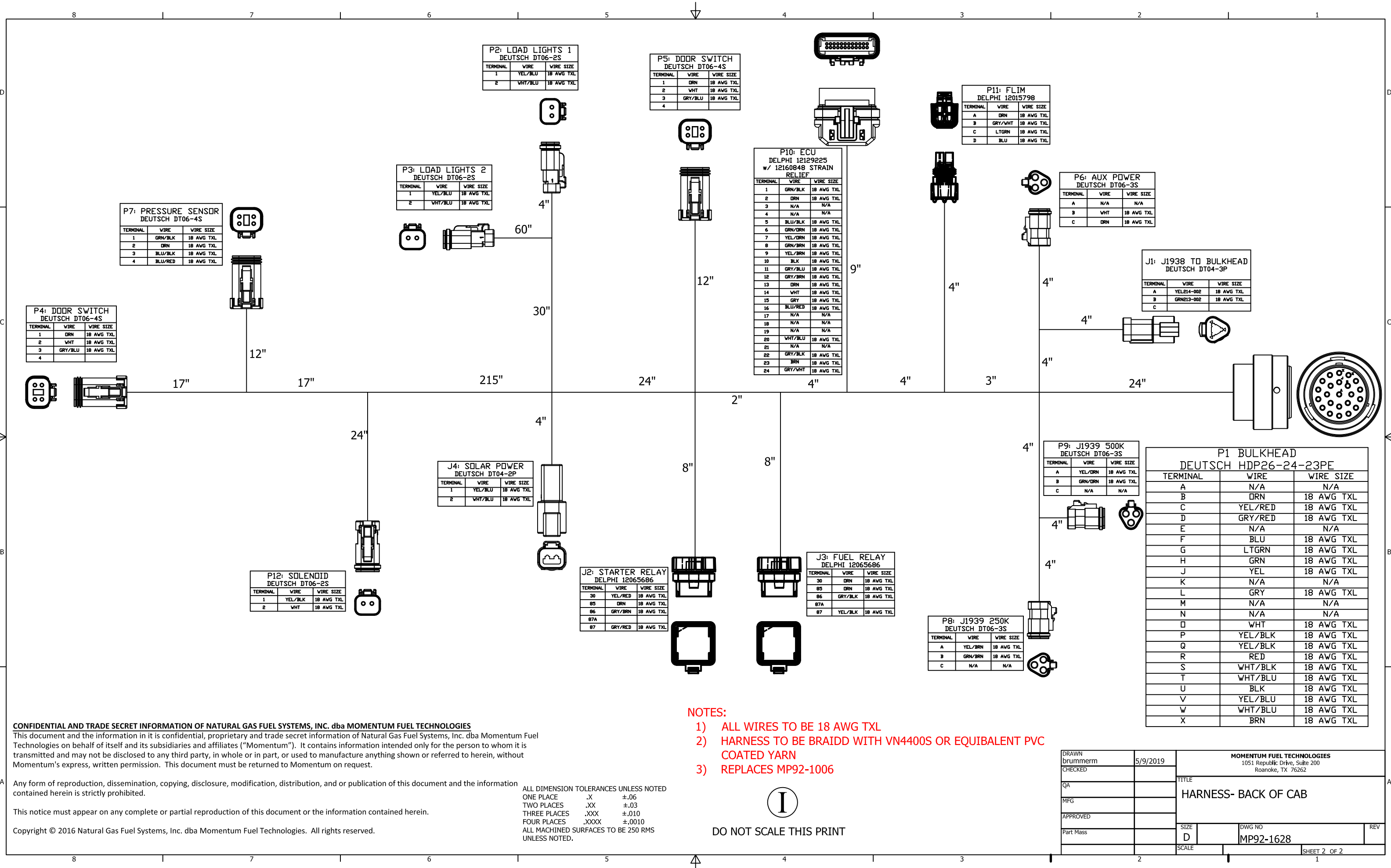
ALL DIMENSION TOLERANCES UNLESS NOTED
 ONE PLACE .X ±.06
 TWO PLACES .XX ±.03
 THREE PLACES .XXX ±.010
 FOUR PLACES .XXXX ±.0010
 ALL MACHINED SURFACES TO BE 250 RMS UNLESS NOTED.

- NOTES:**
- 1) ALL WIRES TO BE 18 AWG TXL
 - 2) HARNESS TO BE BRAIDD WITH VN4400S OR EQUIVALENT PVC COATED YARN
 - 3) REPLACES MP92-1006



DO NOT SCALE THIS PRINT

DRAWN brummern	5/9/2019	MOMENTUM FUEL TECHNOLOGIES 1051 Republic Drive, Suite 200 Roanoke, TX 76262	
CHECKED		TITLE HARNESS- BACK OF CAB	
QA		SIZE D	DWG NO MP92-1628
MFG		SCALE	REV
APPROVED			
Part Mass			
		SHEET 1 OF 2	



P2: LOAD LIGHTS 1
DEUTSCH DT06-2S

TERMINAL	WIRE	WIRE SIZE
1	YEL/BLU	18 AWG TXL
2	WHT/BLU	18 AWG TXL

P5: DOOR SWITCH
DEUTSCH DT06-4S

TERMINAL	WIRE	WIRE SIZE
1	DRN	18 AWG TXL
2	WHT	18 AWG TXL
3	GRY/BLU	18 AWG TXL
4		

P11: FLIM
DELPHI 12015798

TERMINAL	WIRE	WIRE SIZE
A	DRN	18 AWG TXL
B	GRY/WHT	18 AWG TXL
C	LTGRN	18 AWG TXL
D	BLU	18 AWG TXL

P10: ECU
DELPHI 12129225
w/ 12160848 STRAIN
RELIEF

TERMINAL	WIRE	WIRE SIZE
1	GRN/BLK	18 AWG TXL
2	DRN	18 AWG TXL
3	N/A	N/A
4	N/A	N/A
5	BLU/BLK	18 AWG TXL
6	GRN/DRN	18 AWG TXL
7	YEL/DRN	18 AWG TXL
8	GRN/BRN	18 AWG TXL
9	YEL/BRN	18 AWG TXL
10	BLK	18 AWG TXL
11	GRY/BLU	18 AWG TXL
12	GRY/BRN	18 AWG TXL
13	DRN	18 AWG TXL
14	WHT	18 AWG TXL
15	GRY	18 AWG TXL
16	BLU/RED	18 AWG TXL
17	N/A	N/A
18	N/A	N/A
19	N/A	N/A
20	WHT/BLU	18 AWG TXL
21	N/A	N/A
22	GRY/BLK	18 AWG TXL
23	BRN	18 AWG TXL
24	GRY/WHT	18 AWG TXL

P6: AUX POWER
DEUTSCH DT06-3S

TERMINAL	WIRE	WIRE SIZE
A	N/A	N/A
B	WHT	18 AWG TXL
C	DRN	18 AWG TXL

J1: J1938 TO BULKHEAD
DEUTSCH DT04-3P

TERMINAL	WIRE	WIRE SIZE
A	YEL214-002	18 AWG TXL
B	GRN213-002	18 AWG TXL
C		

P7: PRESSURE SENSOR
DEUTSCH DT06-4S

TERMINAL	WIRE	WIRE SIZE
1	GRN/BLK	18 AWG TXL
2	DRN	18 AWG TXL
3	BLU/BLK	18 AWG TXL
4	BLU/RED	18 AWG TXL

P3: LOAD LIGHTS 2
DEUTSCH DT06-2S

TERMINAL	WIRE	WIRE SIZE
1	YEL/BLU	18 AWG TXL
2	WHT/BLU	18 AWG TXL

P4: DOOR SWITCH
DEUTSCH DT06-4S

TERMINAL	WIRE	WIRE SIZE
1	DRN	18 AWG TXL
2	WHT	18 AWG TXL
3	GRY/BLU	18 AWG TXL
4		

P12: SOLENOID
DEUTSCH DT06-2S

TERMINAL	WIRE	WIRE SIZE
1	YEL/BLK	18 AWG TXL
2	WHT	18 AWG TXL

J4: SOLAR POWER
DEUTSCH DT04-2P

TERMINAL	WIRE	WIRE SIZE
1	YEL/BLU	18 AWG TXL
2	WHT/BLU	18 AWG TXL

J2: STARTER RELAY
DELPHI 12065686

TERMINAL	WIRE	WIRE SIZE
30	YEL/RED	18 AWG TXL
85	DRN	18 AWG TXL
86	GRY/BRN	18 AWG TXL
87A		
87	GRY/RED	18 AWG TXL

J3: FUEL RELAY
DELPHI 12065686

TERMINAL	WIRE	WIRE SIZE
30	DRN	18 AWG TXL
85	DRN	18 AWG TXL
86	GRY/BLK	18 AWG TXL
87A		
87	YEL/BLK	18 AWG TXL

P9: J1939 500K
DEUTSCH DT06-3S

TERMINAL	WIRE	WIRE SIZE
A	YEL/DRN	18 AWG TXL
B	GRN/DRN	18 AWG TXL
C	N/A	N/A

P8: J1939 250K
DEUTSCH DT06-3S

TERMINAL	WIRE	WIRE SIZE
A	YEL/BRN	18 AWG TXL
B	GRN/BRN	18 AWG TXL
C	N/A	N/A

P1 BULKHEAD
DEUTSCH HDP26-24-23PE

TERMINAL	WIRE	WIRE SIZE
A	N/A	N/A
B	DRN	18 AWG TXL
C	YEL/RED	18 AWG TXL
D	GRY/RED	18 AWG TXL
E	N/A	N/A
F	BLU	18 AWG TXL
G	LTGRN	18 AWG TXL
H	GRN	18 AWG TXL
J	YEL	18 AWG TXL
K	N/A	N/A
L	GRY	18 AWG TXL
M	N/A	N/A
N	N/A	N/A
D	WHT	18 AWG TXL
P	YEL/BLK	18 AWG TXL
Q	YEL/BLK	18 AWG TXL
R	RED	18 AWG TXL
S	WHT/BLK	18 AWG TXL
T	WHT/BLU	18 AWG TXL
U	BLK	18 AWG TXL
V	YEL/BLU	18 AWG TXL
W	WHT/BLU	18 AWG TXL
X	BRN	18 AWG TXL

- NOTES:**
- 1) ALL WIRES TO BE 18 AWG TXL
 - 2) HARNESS TO BE BRAIDD WITH VN4400S OR EQUIVALENT PVC COATED YARN
 - 3) REPLACES MP92-1006

CONFIDENTIAL AND TRADE SECRET INFORMATION OF NATURAL GAS FUEL SYSTEMS, INC. dba MOMENTUM FUEL TECHNOLOGIES
This document and the information in it is confidential, proprietary and trade secret information of Natural Gas Fuel Systems, Inc. dba Momentum Fuel Technologies on behalf of itself and its subsidiaries and affiliates ("Momentum"). It contains information intended only for the person to whom it is transmitted and may not be disclosed to any third party, in whole or in part, or used to manufacture anything shown or referred to herein, without Momentum's express, written permission. This document must be returned to Momentum on request.

Any form of reproduction, dissemination, copying, disclosure, modification, distribution, and or publication of this document and the information contained herein is strictly prohibited.

This notice must appear on any complete or partial reproduction of this document or the information contained herein.

Copyright © 2016 Natural Gas Fuel Systems, Inc. dba Momentum Fuel Technologies. All rights reserved.

ALL DIMENSION TOLERANCES UNLESS NOTED
 ONE PLACE .X ±.06
 TWO PLACES .XX ±.03
 THREE PLACES .XXX ±.010
 FOUR PLACES .XXXX ±.0010
 ALL MACHINED SURFACES TO BE 250 RMS UNLESS NOTED.

I
DO NOT SCALE THIS PRINT

DRAWN brummern	5/9/2019	MOMENTUM FUEL TECHNOLOGIES 1051 Republic Drive, Suite 200 Roanoke, TX 76262	
CHECKED		TITLE HARNESS- BACK OF CAB	
QA		SIZE D	
MFG		DWG NO MP92-1628	
APPROVED		REV	
Part Mass		SCALE	
		SHEET 2 OF 2	