

P1 FMM INTERFACE DEUTSCH HDP26-24-23SE

TERMINAL	WIRE	WIRE SIZE	TERMINAL	WIRE	WIRE SIZE
A	SEALING PLUG	N/A	N	RED	18 AWG TXL
B	ORN	18 AWG TXL	Q	WHT	18 AWG TXL
C	SEALING PLUG	N/A	P	SEALING PLUG	N/A
D	SEALING PLUG	N/A	Q	YEL/BLU	18 AWG TXL
E	SEALING PLUG	N/A	R	GRY/RED	18 AWG TXL
F	SEALING PLUG	N/A	S	SEALING PLUG	N/A
G	SEALING PLUG	N/A	T	GRY/BLK	18 AWG TXL
H	GRN	18 AWG TXL	U	GRY/WHT	18 AWG TXL
J	YEL	18 AWG TXL	V	SEALING PLUG	N/A
K	SEALING PLUG	N/A	W	SEALING PLUG	N/A
L	GRY	18 AWG TXL	X	BRN	18 AWG TXL
M	SEALING PLUG	N/A			

J1 CHASSIS INTERFACE DEUTSCH HDP26-18-14PE

TERMINAL	WIRE	WIRE SIZE	TERMINAL	WIRE	WIRE SIZE
A	YEL	18 AWG TXL	H	SEALING PLUG	N/A
B	GRN	18 AWG TXL	J	BRN	18 AWG TXL
C	DRN	18 AWG TXL	K	SEALING PLUG	N/A
D	WHT	18 AWG TXL	L	SEALING PLUG	N/A
E	RED	18 AWG TXL	M	SEALING PLUG	N/A
F	SEALING PLUG	N/A	N	SEALING PLUG	N/A
G	SEALING PLUG	N/A	P	SEALING PLUG	N/A

P5 REAR FILL JUMPER DEUTSCH DT06-2S

TERMINAL	WIRE	WIRE SIZE
1	GRY/RED	18 AWG TXL
2	GRY/RED	18 AWG TXL

P4 BUMPER FILL JUMPER DEUTSCH DT06-2S

TERMINAL	WIRE	WIRE SIZE
1	GRY	18 AWG TXL
2	GRY	18 AWG TXL

J5 REAR FILL DEUTSCH DT04-2P

TERMINAL	WIRE	WIRE SIZE
1	WHT	18 AWG TXL
2	GRY/RED	18 AWG TXL

J4 BUMPER FILL DEUTSCH DT04-2P

TERMINAL	WIRE	WIRE SIZE
1	WHT	18 AWG TXL
2	GRY	18 AWG TXL

P3 AUX TANK 2 DEUTSCH DT06-4S

TERMINAL	WIRE	WIRE SIZE
1	DRN	18 AWG TXL
2	WHT	18 AWG TXL
3	GRY/WHT	18 AWG TXL
4	YEL/BLU	18 AWG TXL

P2 AUX TANK 1 DEUTSCH DT06-4S

TERMINAL	WIRE	WIRE SIZE
1	DRN	18 AWG TXL
2	WHT	18 AWG TXL
3	GRY/BLK	18 AWG TXL
4	YEL/BLU	18 AWG TXL

J3 AUX TANK 2 JUMPER DEUTSCH DT04-4P

TERMINAL	WIRE	WIRE SIZE
1	DRN	18 AWG TXL
2	SEALING PLUG	N/A
3	DRN	18 AWG TXL
4	N/A	N/A

J2 AUX TANK 1 JUMPER DEUTSCH DT04-4P

TERMINAL	WIRE	WIRE SIZE
1	DRN	18 AWG TXL
2	SEALING PLUG	N/A
3	DRN	18 AWG TXL
4	SEALING PLUG	N/A

- NOTES:**
- HARNES TO BE BRAIDED WITH VN4400S OR EQUIVALENT PVC COATED YARN**
 - USE WITH VERTICAL FMM W/ ELECTRONICS FOR AUTOCAR**
 - REPLACES MP92-1620**
 - PLUG ALL UNUSED CAVITIES**

CONFIDENTIAL AND TRADE SECRET INFORMATION OF NATURAL GAS FUEL SYSTEMS, INC. dba MOMENTUM FUEL TECHNOLOGIES
 This document and the information in it is confidential, proprietary and trade secret information of Natural Gas Fuel Systems, Inc. dba Momentum Fuel Technologies on behalf of itself and its subsidiaries and affiliates ("Momentum"). It contains information intended only for the person to whom it is transmitted and may not be disclosed to any third party, in whole or in part, or used to manufacture anything shown or referred to herein, without Momentum's express, written permission. This document must be returned to Momentum on request.

Any form of reproduction, dissemination, copying, disclosure, modification, distribution, and or publication of this document and the information contained herein is strictly prohibited.

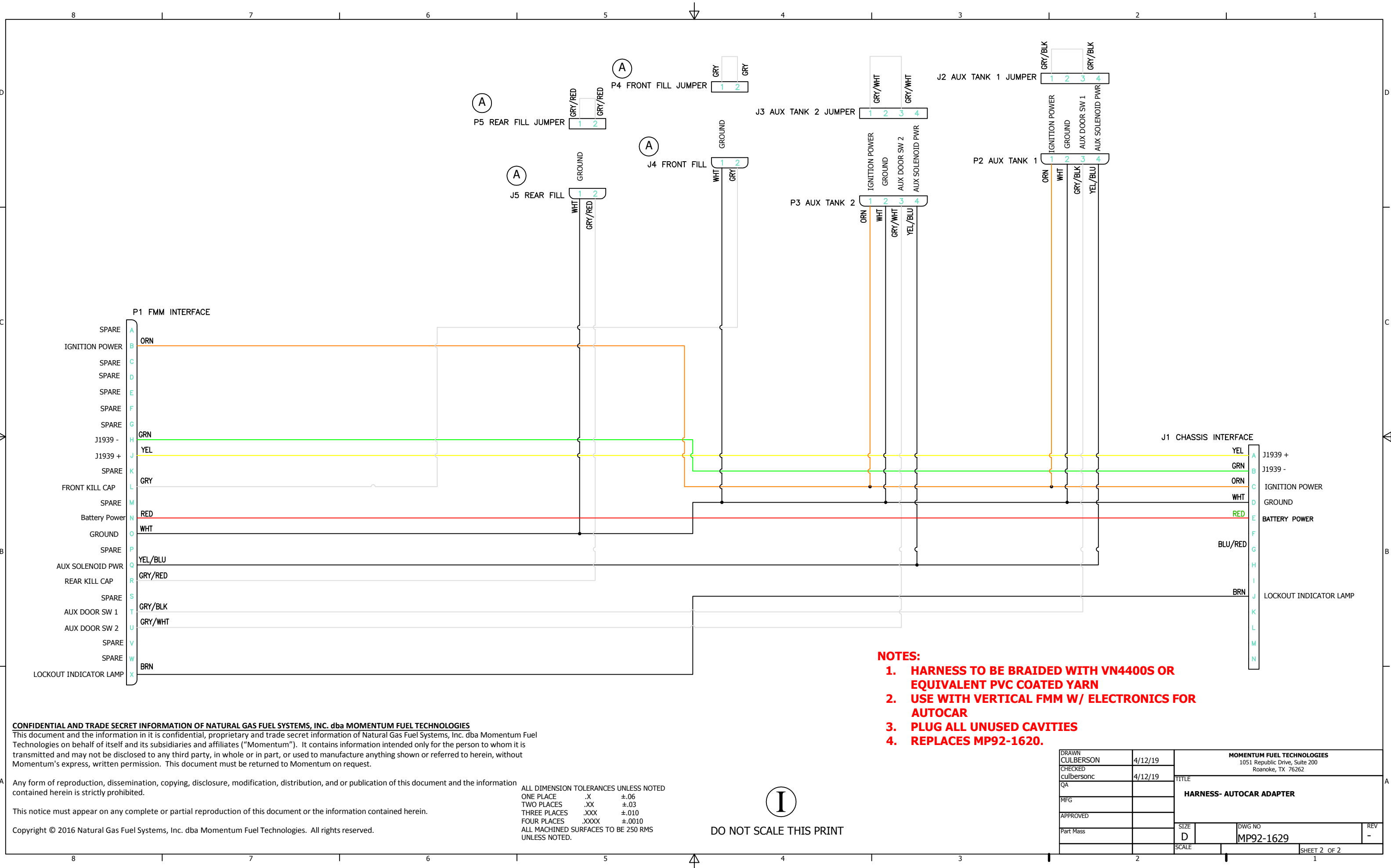
This notice must appear on any complete or partial reproduction of this document or the information contained herein.

Copyright © 2016 Natural Gas Fuel Systems, Inc. dba Momentum Fuel Technologies. All rights reserved.

ALL DIMENSION TOLERANCES UNLESS NOTED
 ONE PLACE .X ±.06
 TWO PLACES .XX ±.03
 THREE PLACES .XXX ±.010
 FOUR PLACES .XXXX ±.0010
 ALL MACHINED SURFACES TO BE 250 RMS UNLESS NOTED.

I
 DO NOT SCALE THIS PRINT

DRAWN CULBERSONC	4/12/19	MOMENTUM FUEL TECHNOLOGIES 1051 Republic Drive, Suite 200 Roanoke, TX 76262
CHECKED culbersonc	4/12/19	
QA		TITLE HARNES- AUTOCAR ADAPTER
MFG		
APPROVED		
Part Mass		SIZE D
		DWG NO MP92-1629
		REV -
		SCALE
		SHEET 1 OF 2



- NOTES:**
- HARNES TO BE BRAIDED WITH VN4400S OR EQUIVALENT PVC COATED YARN**
 - USE WITH VERTICAL FMM W/ ELECTRONICS FOR AUTOCAR**
 - PLUG ALL UNUSED CAVITIES**
 - REPLACES MP92-1620.**

CONFIDENTIAL AND TRADE SECRET INFORMATION OF NATURAL GAS FUEL SYSTEMS, INC. dba MOMENTUM FUEL TECHNOLOGIES
 This document and the information in it is confidential, proprietary and trade secret information of Natural Gas Fuel Systems, Inc. dba Momentum Fuel Technologies on behalf of itself and its subsidiaries and affiliates ("Momentum"). It contains information intended only for the person to whom it is transmitted and may not be disclosed to any third party, in whole or in part, or used to manufacture anything shown or referred to herein, without Momentum's express, written permission. This document must be returned to Momentum on request.

Any form of reproduction, dissemination, copying, disclosure, modification, distribution, and or publication of this document and the information contained herein is strictly prohibited.

This notice must appear on any complete or partial reproduction of this document or the information contained herein.

Copyright © 2016 Natural Gas Fuel Systems, Inc. dba Momentum Fuel Technologies. All rights reserved.

ALL DIMENSION TOLERANCES UNLESS NOTED
 ONE PLACE .X ±.06
 TWO PLACES .XX ±.03
 THREE PLACES .XXX ±.010
 FOUR PLACES .XXXX ±.0010
 ALL MACHINED SURFACES TO BE 250 RMS UNLESS NOTED.



DO NOT SCALE THIS PRINT

DRAWN CULBERSON	4/12/19	MOMENTUM FUEL TECHNOLOGIES 1051 Republic Drive, Suite 200 Roanoke, TX 76262	
CHECKED culbersonc	4/12/19	TITLE HARNES- AUTOCAR ADAPTER	
QA			
MFG			
APPROVED			
Part Mass		SIZE D	DWG NO MP92-1629
		SCALE	REV -
			SHEET 2 OF 2