

**P9: DOOR SWITCH  
DEUTSCH DT06-4S**

TERMINAL	WIRE	WIRE SIZE
1	DRN	18 AWG TXL
2	WHT	18 AWG TXL
3	GRY/BLU	18 AWG TXL
4		

**P6: ECU  
DELPHI 12129225  
w/ 12160848 STRAIN  
RELIEF**

TERMINAL	WIRE	WIRE SIZE
1	GRN/BLK	18 AWG TXL
2	DRN	18 AWG TXL
3		
4		
5	BLU/BLK	18 AWG TXL
6	GRN/DRN	18 AWG TXL
7	YEL/DRN	18 AWG TXL
8	GRN/BRN	18 AWG TXL
9	YEL/BRN	18 AWG TXL
10	BLK	18 AWG TXL
11	GRY/BLU	18 AWG TXL
12	GRY/BRN	18 AWG TXL
13	DRN	18 AWG TXL
14	WHT	18 AWG TXL
15	GRY	18 AWG TXL
16	BLU/RED	18 AWG TXL
17		
18		
19		
20	WHT/BLK	18 AWG TXL
21		
22	GRY/BLK	18 AWG TXL
23	BRN	18 AWG TXL
24	GRY/WHT	18 AWG TXL

**P5: FLIM  
DELPHI 12015798**

TERMINAL	WIRE	WIRE SIZE
A	DRN	18 AWG TXL
B	GRY/WHT	18 AWG TXL
C	WHT	18 AWG TXL
D	BLU	18 AWG TXL

**J3: STARTER RELAY  
DELPHI 12066033**

TERMINAL	WIRE	WIRE SIZE
30	YEL/RED	18 AWG TXL
85	YEL/RED	18 AWG TXL
86	GRY/BRN	18 AWG TXL
87	GRY/RED	18 AWG TXL

**J2: FUEL RELAY  
DELPHI 12066033**

TERMINAL	WIRE	WIRE SIZE
30	DRN	18 AWG TXL
85	DRN	18 AWG TXL
86	GRY/BLK	18 AWG TXL
87A		
87	YEL/BLK	18 AWG TXL

**P10: DOOR LAMP  
DEUTSCH DT06-2S**

TERMINAL	WIRE	WIRE SIZE
1	WHT	18 AWG TXL
2	GRY/BLU	18 AWG TXL

**P1: BULKHEAD  
DEUTSCH  
HDP24-24-23PE  
w/HD30-24BT-BK**

TERMINAL	WIRE	WIRE SIZE
A		
B	DRN	18 AWG TXL
C	YEL/RED	18 AWG TXL
D	GRY/RED	18 AWG TXL
E		
F	BLU	18 AWG TXL
G		
H	GRN	18 AWG TXL
J	YEL	18 AWG TXL
K		
L	GRY	18 AWG TXL
M		
N		
O	WHT	18 AWG TXL
P	YEL/BLK	18 AWG TXL
Q	YEL/BLK	18 AWG TXL
R		
S		
T	WHT/BLK	18 AWG TXL
U	BLK	18 AWG TXL
V		
W		
X	BRN	18 AWG TXL

**P4: AUX  
DEUTSCH DT06-3S**

TERMINAL	WIRE	WIRE SIZE
A		
B	WHT	18 AWG TXL
C	DRN	18 AWG TXL

**P3: J1939 CAN 1  
DEUTSCH DT06-3S**

TERMINAL	WIRE	WIRE SIZE
A	YEL/BRN	18 AWG TXL
B	GRN/BRN	18 AWG TXL
C		

**P2: J1939 CAN 2  
DEUTSCH DT06-3S**

TERMINAL	WIRE	WIRE SIZE
A	YEL/DRN	18 AWG TXL
B	GRN/DRN	18 AWG TXL
C		

**P7: SENSOR  
DEUTSCH DT06-4S**

TERMINAL	WIRE	WIRE SIZE
1	GRN/BLK	18 AWG TXL
2	DRN	18 AWG TXL
3	BLU/BLK	18 AWG TXL
4	BLU/RED	18 AWG TXL

**P8: SOLENOID  
DEUTSCH DT06-2S**

TERMINAL	WIRE	WIRE SIZE
1	YEL/BLK	18 AWG TXL
2	WHT	18 AWG TXL

**J1: J1939 TO BULKHEAD  
DEUTSCH DT04-3P  
w/W3P-1939 WEDGELOCK**

TERMINAL	WIRE	WIRE SIZE
A	YEL	18 AWG TXL
B	GRN	18 AWG TXL
C		

- NOTE:**
- 1) REPLACES MP92-1020
  - 2) HARNESS TO BE BRAIDED WITH VN4400S OR EQUIVALENT PVC COATED YARN
  - 3) USED WITH SIDE MOUNTS WITH VERIFLOW REGULATORS
  - 4) ALL WIRES TO BE 18 AWG TXL
  - 5) PLUG ALL UNUSED CONNECTORS

**CONFIDENTIAL AND TRADE SECRET INFORMATION OF NATURAL GAS FUEL SYSTEMS, INC. dba MOMENTUM FUEL TECHNOLOGIES**  
 This document and the information in it is confidential, proprietary and trade secret information of Natural Gas Fuel Systems, Inc. dba Momentum Fuel Technologies on behalf of itself and its subsidiaries and affiliates ("Momentum"). It contains information intended only for the person to whom it is transmitted and may not be disclosed to any third party, in whole or in part, or used to manufacture anything shown or referred to herein, without Momentum's express, written permission. This document must be returned to Momentum on request.

Any form of reproduction, dissemination, copying, disclosure, modification, distribution, and or publication of this document and the information contained herein is strictly prohibited.

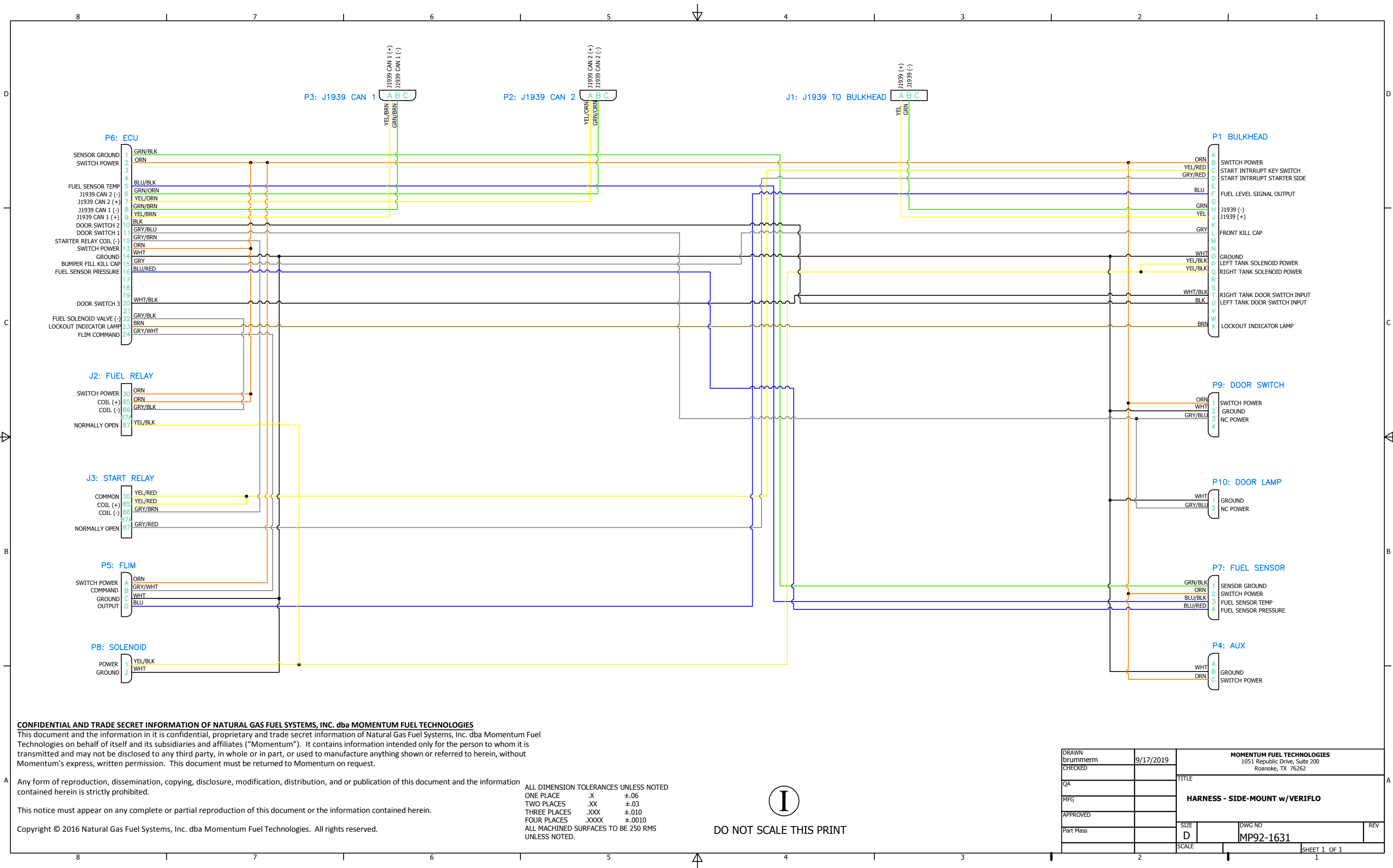
This notice must appear on any complete or partial reproduction of this document or the information contained herein.

Copyright © 2016 Natural Gas Fuel Systems, Inc. dba Momentum Fuel Technologies. All rights reserved.

ALL DIMENSION TOLERANCES UNLESS NOTED  
 ONE PLACE .X ±.06  
 TWO PLACES .XX ±.03  
 THREE PLACES .XXX ±.010  
 FOUR PLACES .XXXX ±.0010  
 ALL MACHINED SURFACES TO BE 250 RMS UNLESS NOTED.

I  
DO NOT SCALE THIS PRINT

DRAWN brummerr	9/17/2019	MOMENTUM FUEL TECHNOLOGIES 1051 Republic Drive, Suite 200 Roanoke, TX 76262	
CHECKED			
QA		TITLE HARNESS - SIDE-MOUNT w/VERIFLO	
MFG			
APPROVED			
Part Mass		SIZE D	DWG NO MP92-1631
		SCALE	REV
			SHEET 1 OF 1



**CONFIDENTIAL AND TRADE SECRET INFORMATION OF NATURAL GAS FUEL SYSTEMS, INC. dba MOMENTUM FUEL TECHNOLOGIES**  
 This document and the information in it is confidential, proprietary and trade secret information of Natural Gas Fuel Systems, Inc. dba Momentum Fuel Technologies on behalf of itself and its subsidiaries and affiliates ("Momentum"). It contains information intended only for the person to whom it is transmitted and may not be disclosed to any third party, in whole or in part, or used to manufacture anything shown or referred to herein, without Momentum's express, written permission. This document must be returned to Momentum on request.

Any form of reproduction, dissemination, copying, disclosure, modification, distribution, and or publication of this document and the information contained herein is strictly prohibited.

This notice must appear on any complete or partial reproduction of this document or the information contained herein.

Copyright © 2016 Natural Gas Fuel Systems, Inc. dba Momentum Fuel Technologies. All rights reserved.

ALL DIMENSION TOLERANCES UNLESS NOTED  
 ONE PLACE .X ±.06  
 TWO PLACES .XX ±.03  
 THREE PLACES .XXX ±.010  
 FOUR PLACES .XXXX ±.0010  
 ALL MACHINED SURFACES TO BE 250 RMS UNLESS NOTED.



DO NOT SCALE THIS PRINT

DRAWN brummern	9/17/2019	<b>MOMENTUM FUEL TECHNOLOGIES</b> 1051 Republic Drive, Suite 200 Roanoke, TX 76262	
CHECKED		TITLE	
QA		<b>HARNES - SIDE-MOUNT w/VERIFLO</b>	
MFG		SIZE D	DWG NO MP92-1631
APPROVED		SCALE	REV
Part Mass			SHEET 1 OF 1