

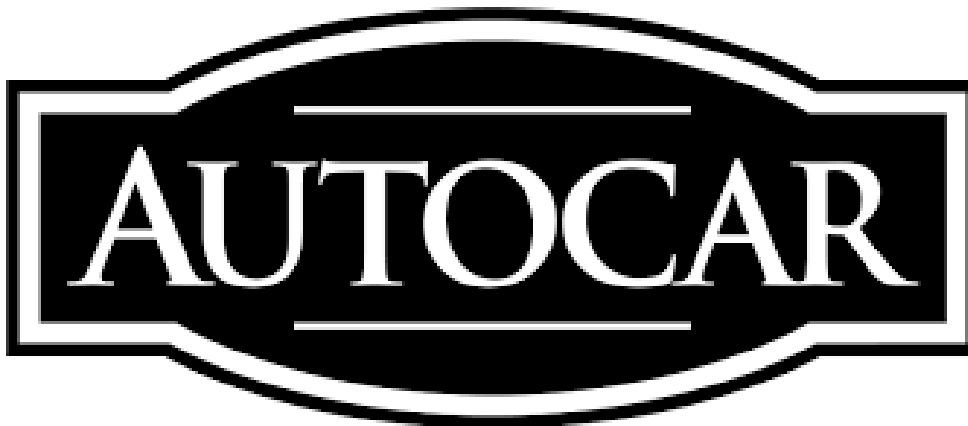


## Autocar Electrical Connection

**Date:** 4.30.2024

**Subject:** Autocar Electrical Connection

**Models:** AutoCar



Cummins Clean Fuel Technologies

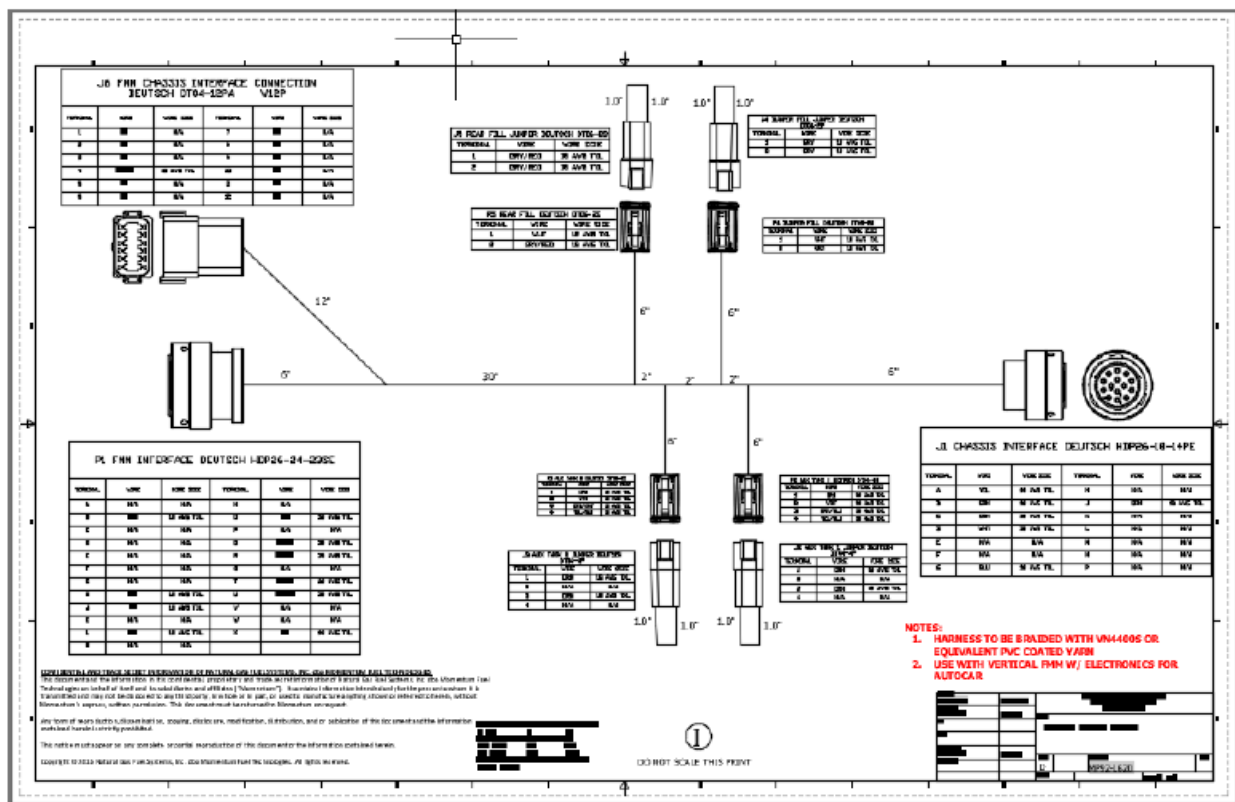
1051 Republic Drive, Suite 200

Roanoke, TX 76262

Phone: 817-767-6020

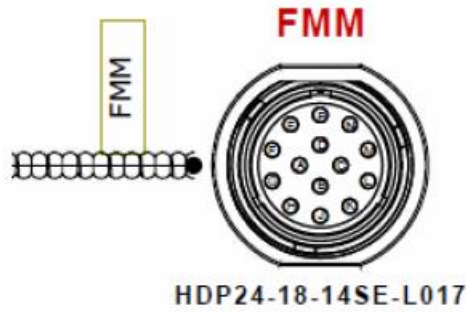
# Chassis Interface Harness

1. Locate the Chassis Interface Harness Autocar Adapter, MP92-1620 for Autocar in the installation kit.
2. The P1 FMM Interface connector will connect to the system, whether it is a side mount system, back of cab with integrated FMM system, or a standalone FMM.
3. The J1 Chassis Interface connector will connect to the FMM connector on the Autocar chassis harness.
4. If there is a front fill, connect a wire from the white wire in pin 1 of the J4 Bumper Fill connector the bumper fill. Connect a wire from the bumper fill cap to pin 2 of the J4 Bumper Fill connectors.



MP92-1620 Autocar Adapter Harness

Locate the FMM connector on the Autocar chassis harness. It is a 14-pin round Deutsch connector, usually located on the left-hand frame rail near the first crossmember.



Mating connector:  
HDP26-18-14PE

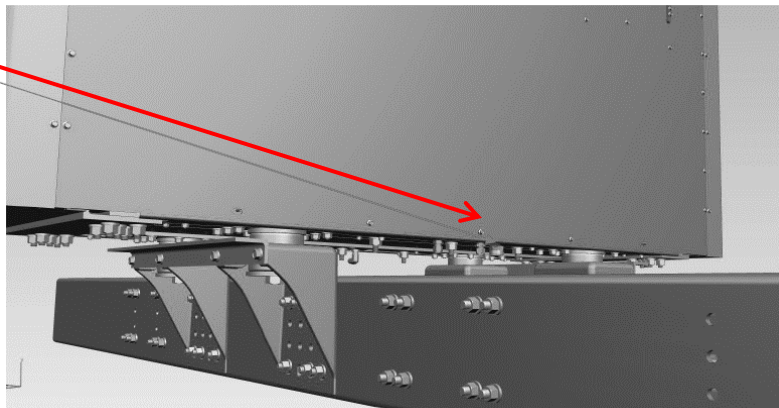
406: databus +, 407: databus -

Cav	Wire	GA.	Type	Col.
A	406	-	-	-
B	407	-	-	-
C	242	16 GA	GXL	RDOG
D	0Y-1A	14 GA	GXL	BKDG
E	394	16 GA	GXL	RDBK
F	0R-B	16 GA	GXL	BK
G	435	18 GA	GXL	VTDG
H	234	16 GA	GXL	BNGN
J	183-B	18 GA	GXL	VTDG
K	0R-J	16 GA	GXL	BK
L	235	16 GA	GXL	BNWH
M	-	-	-	-
N	-	-	-	-
P	-	-	-	-

Part Number	Name	Qty
2428-016-1805	BACKSHELL	1

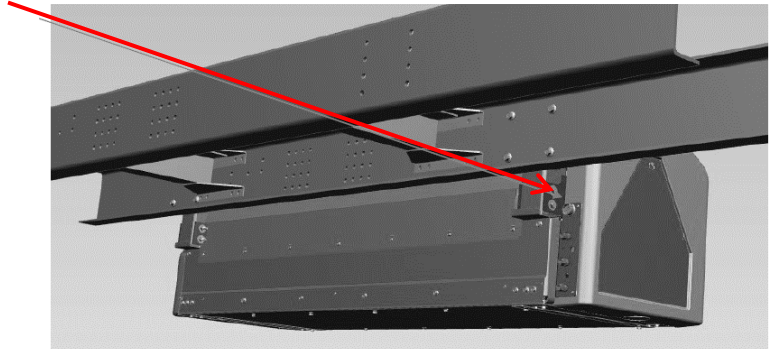
### Back of Cab with Integrated FMM System Connection

On a Back of Cab with integrated FMM systems, the connection is on the bottom of the system between the frame rails.

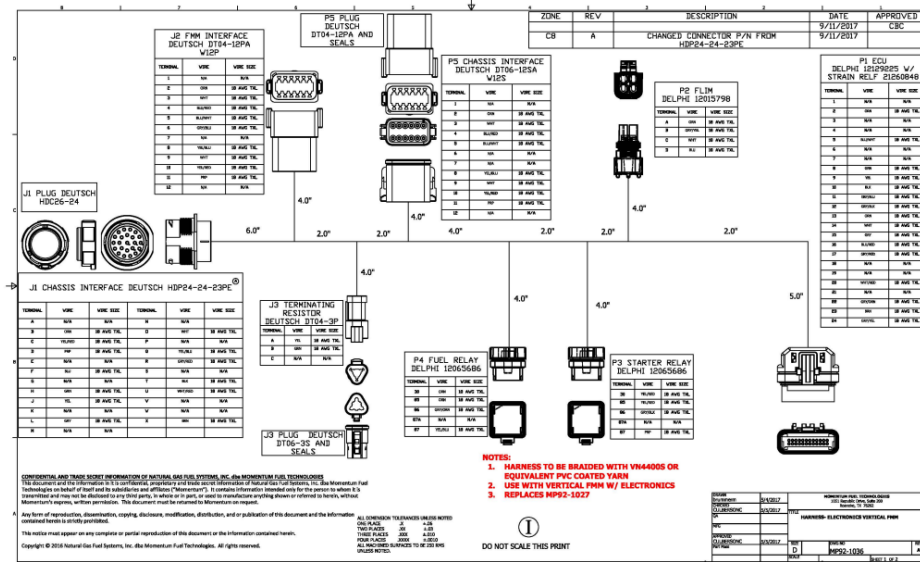


## Side mount with integrated FMM System Connection

On a Side mount system, the connection will be on the rear of the system with the FMM.



Connector J1 Chassis Interface will be on the rear of the FMM Electronics Module.



MP92-1036 Electronics Vertical FMM

Uses Autocar IFM Display

Autocar will recognize our system and will automatically change display screen to show fuel level, fuel pressure, and distance to empty.

Start interrupt is through J1939 and no longer requires any additional connection.