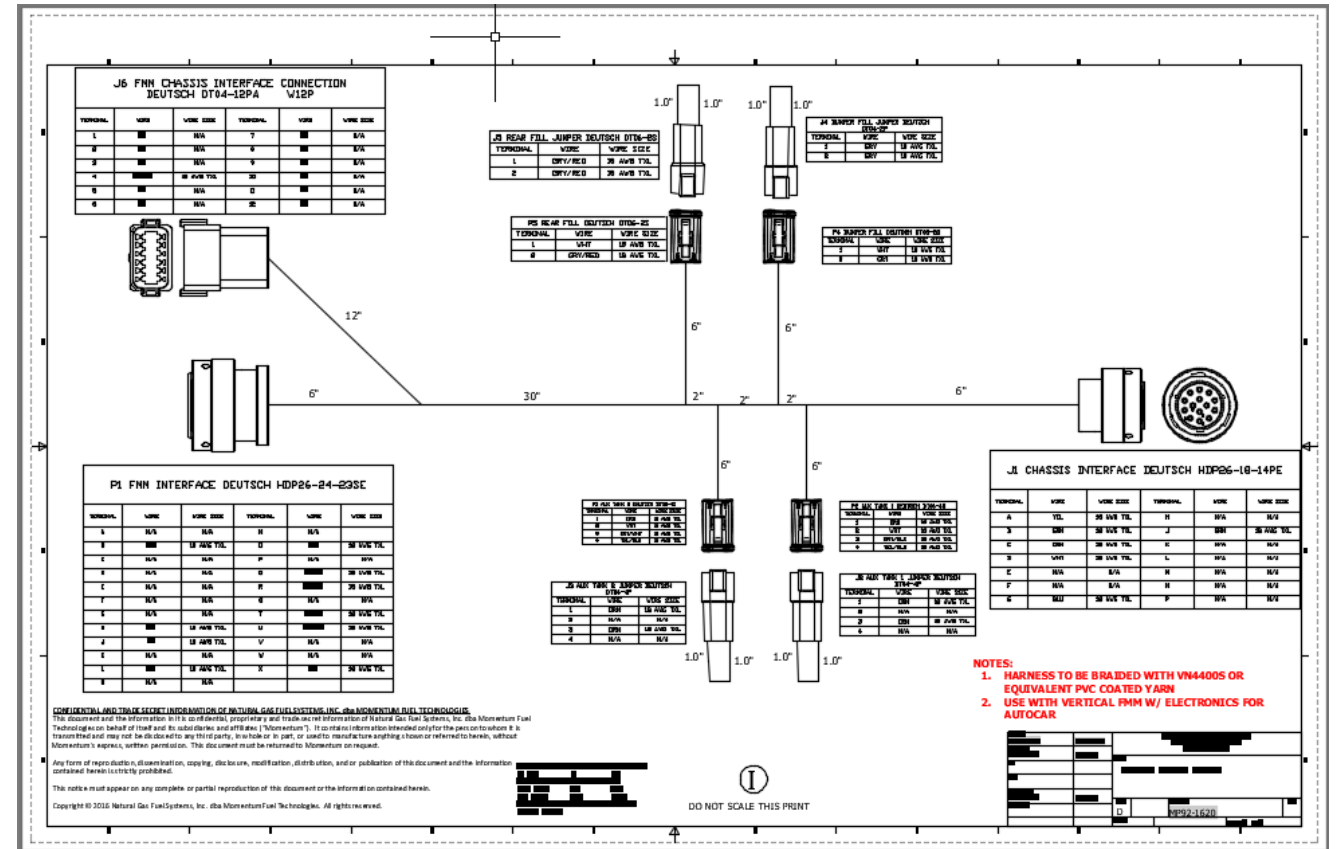




Autocar Electrical Connection

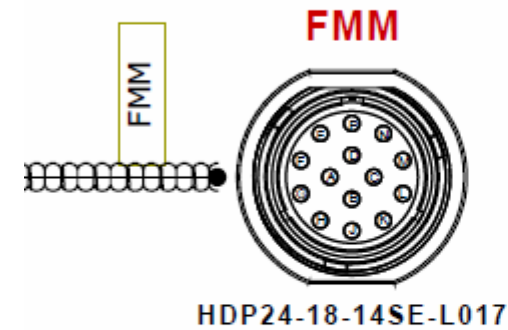
Momentum Chassis Interface Harness

1. Locate the Momentum Chassis Interface Harness, MP92-1620 for Autocar in the installation kit.
2. The P1 FMM Interface connector will connect to the system, whether it is a side mount system, back of cab with integrated FMM system, or a stand alone FMM.
3. The J1 Chassis Interface connector will connect to the FMM connector on the Autocar chassis harness.
4. If there is a front fill, connect a wire from the white wire in pin 1 of the J4 Bumper Fill connector the bumper fill. Connect a wire from the bumper fill cap to pin 2 of the J4 Bumper Fill connector.



Autocar FMM Connector

1. Locate the FMM connector on the Autocar chassis harness. It is a 14 pin round Deutsch connector, usually located on the left hand frame rail near the first crossmember.



Mating connector:
HDP26-18-14PE

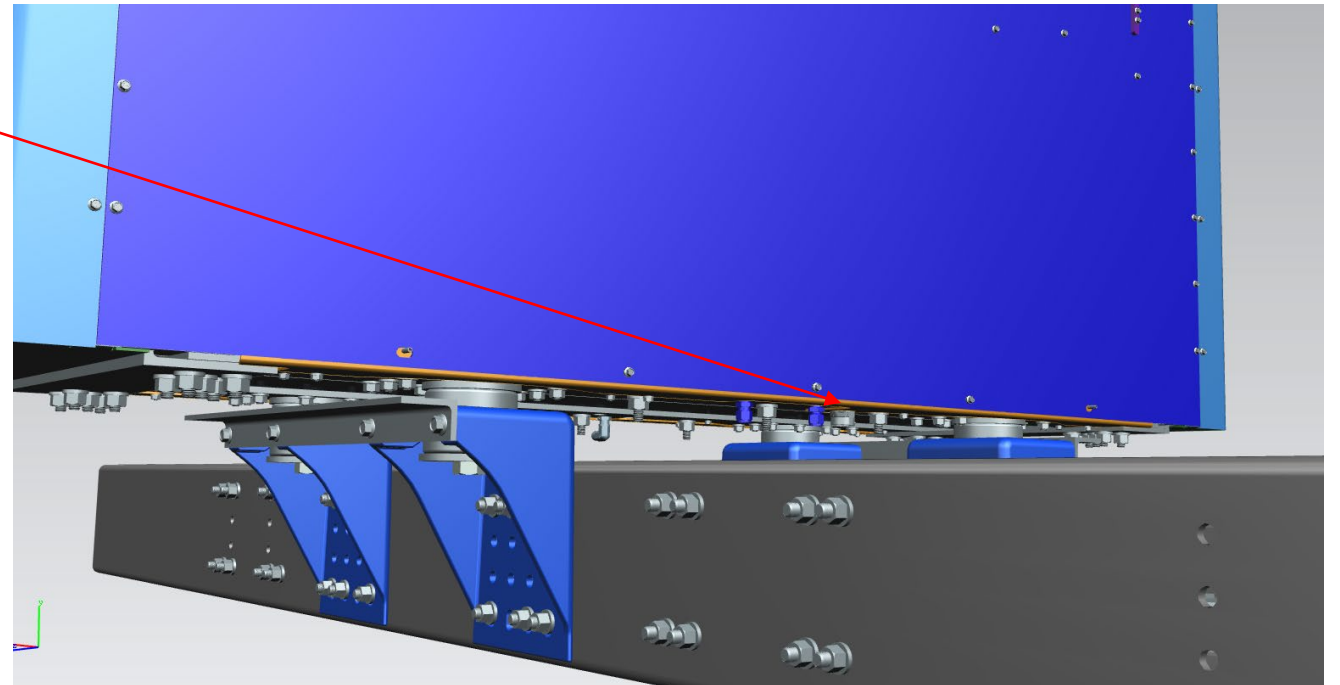
406: databus +, 407: databus -

Cav	Wire	GA.	Type	Col.
A	406	-	-	-
B	407	-	-	-
C	242	16 GA	GXL	RDOG
D	0Y-1A	14 GA	GXL	BKDG
E	394	16 GA	GXL	RDBK
F	0R-B	16 GA	GXL	BK
G	435	18 GA	GXL	VTDG
H	234	16 GA	GXL	BNGN
J	183-B	18 GA	GXL	VTDG
K	0R-J	16 GA	GXL	BK
L	235	16 GA	GXL	BNWH
M	-	-	-	-
N	-	-	-	-
P	-	-	-	-

Part Number	Name	Qty
2428-016-1805	BACKSHELL	1

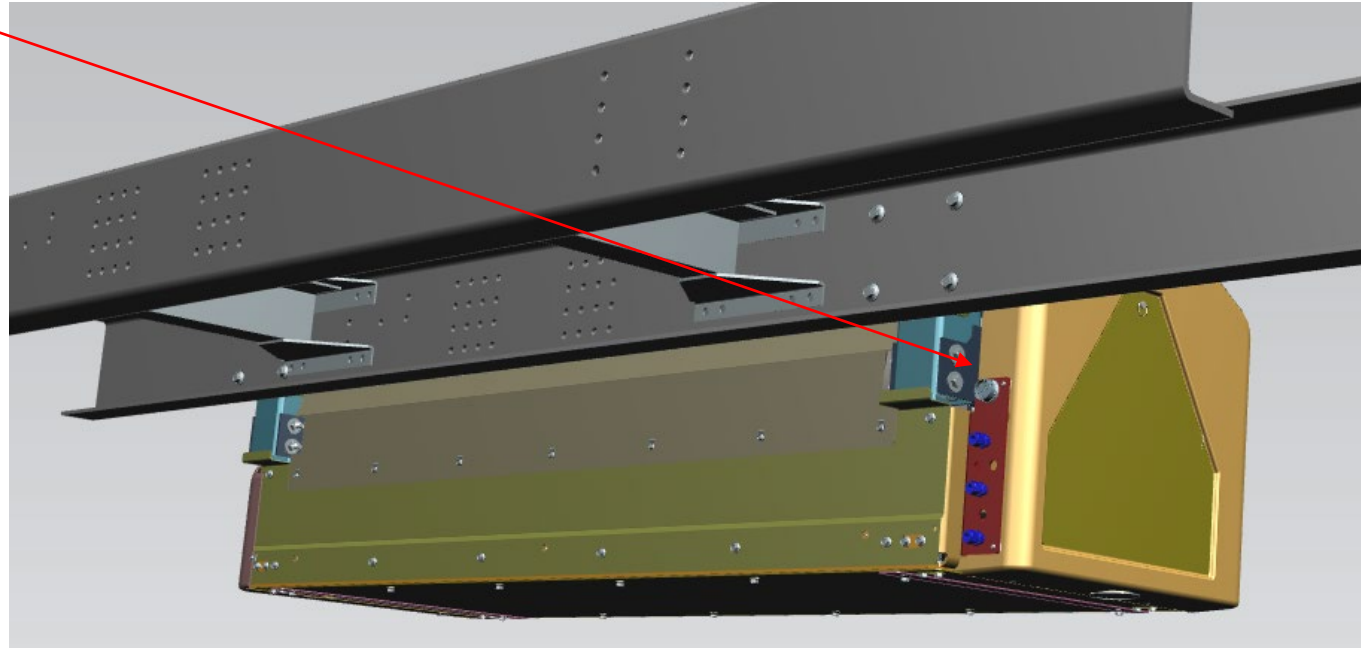
Back of Cab with Integrated FMM System Connection

1. On a Back of Cab with integrated FMM systems, the connection is on the bottom of the system between the frame rails.



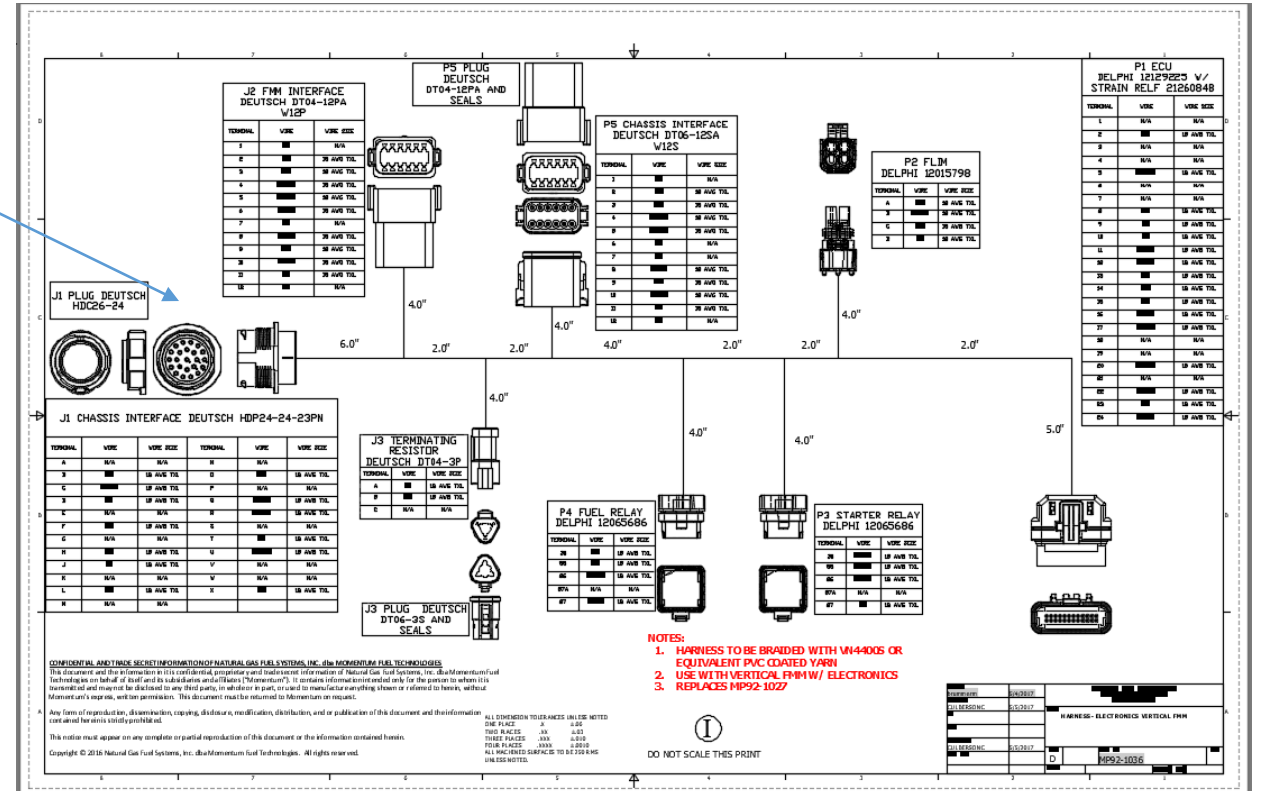
Sidemount System Connection

1. On a Sidemount system, the connection will be on the rear of the system with the FMM.



FMM with Greenlyc

1. Connector J1 Chassis Interface will be on the rear of the FMM Electronics Module.



Operation

1. Uses Autocar IFM Display
2. Autocar will recognize our system and will automatically change display screen to show fuel level, fuel pressure, and distance to empty.
3. Start interrupt is through J1939 and no longer requires any additional connection.