

Volvo Wiring Harness Installation-VNL

Date: 6.3.2024

Subject: Volvo Wiring Harness Installation-VNL

Models: VNL



Cummins Clean Fuel Technologies

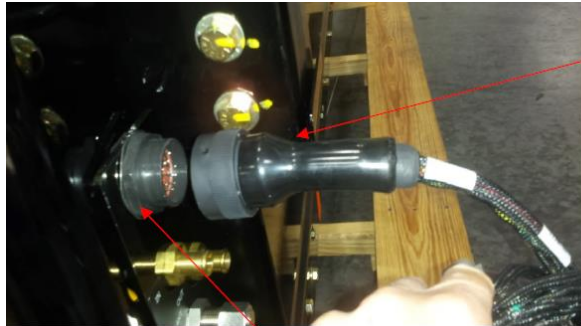
1051 Republic Drive, Suite 200

Roanoke, TX 76262

Phone: 817-767-6020

Wiring Harness Installation:

Connect Chassis Interface Harness 23 pin cannon plug to the 23-pin connector on either the Fuel Management Module or the system, depending on which one you have.



23 Pin Connector

23 Pin Bulkhead Connector on
System or Fuel Management
Module (FMM)

Locate the Volvo 8 Pin interface connector. It is normally approximately 2 feet back of cab in the left-hand frame rail. It should have a cap on it with approximately 4 inches of wires that have heat shrink over it.



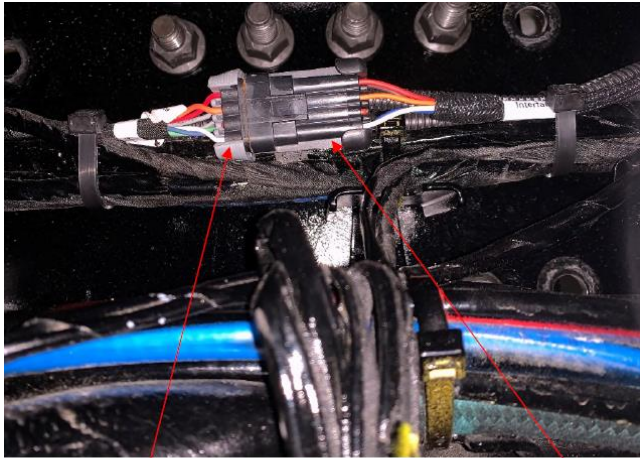
Volvo Interface
Connector (Note:
Shown unplugged from
cap. Some chassis may
have additional wires in
the connector).



Volvo Interface
Connector Cap. Note
heat shrink tubing
protection wires and
fuel level resistor. This
cap is to be removed
during installation.

Remove the cap. This will not be used for the installation.

This cap is to be removed during installation. Plug the CCFT chassis wiring harness 8 Pin connector into the Volvo chassis harness. This connection supplies power, ground, start interrupt, and fuel level signal.



Volvo 8 Pin Connector

CCFT Chassis Interface Connector

J1939 Connections

Locate the J1939 connector inside the cab.



Locate the J1939 Y-Harness in the CCFT Installation Kit

Use the DTM series J1939 Y harness to connect to the DL1J1939 in the center of the dash near the fuse location. You will also have a regular 3pin y harness that will run to the digital fuel gauge.

Unplug terminating resistor from Volvo plug. Remove wedgelock that is in the plug the terminating resistor was installed in.

Install standard Deutsch DTM wedgelock in the Freightliner plug. Install the terminating resistor wedgelock in the DTM plug installed on the Momentum Y-Harness.

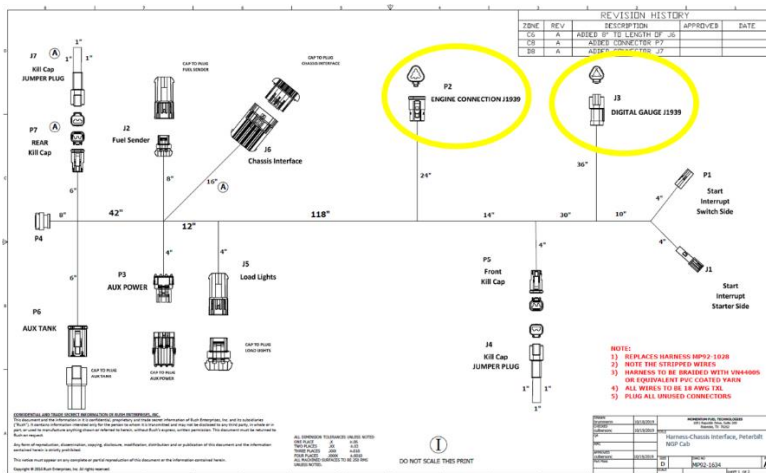
Install the Y harness to the Volvo Plug and terminating resistor.

There should be (1) J1939 Extension Harnesses, MP92-1035, one in the Gauge Kit and one in the BOC Installation Kit.

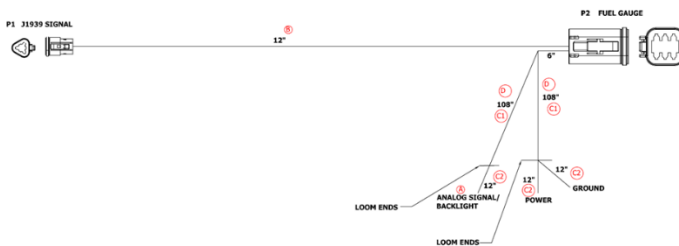


Run one J1939 Extension Harness from each of the J1939 connectors on the Chassis Interface Harness,

MP92-1634-A into the cab. P2 will run to DL1J1939 and the J3 will run directly to the gauge harness.



Connect the J1939 Y-Harness at the Volvo connector of DL1J1939 and the P2 connection and connect J3 to the J1939 connector on the Gauge Harness, MP92-1031.



Connect the red Power wire to a switched power connection, and the black Ground wire to a ground connection. The blue Analog Signal/Backlight does not need to be connected.