

**NOTE: WORKS WITH THE HARNESS  
MP92-1007 FOR THE 8 PIN CHASSIS  
INTERFACE**

**REPLACES MP92-1024**

**CONFIDENTIAL AND TRADE SECRET INFORMATION OF RUSH ENTERPRISES, INC.**

This document and the information in it is confidential, proprietary and trade secret information of Rush Enterprises, Inc. and its subsidiaries ("Rush"). It contains information intended only for the person to whom it is transmitted and may not be disclosed to any third party, in whole or in part, or used to manufacture anything shown or referred to herein, without Rush's express, written permission. This document must be returned to Rush on request.

Any form of reproduction, dissemination, copying, disclosure, modification, distribution and or publication of this document and the information contained herein is strictly prohibited.

This notice must appear on any complete or partial reproduction of this document or the information contained herein.

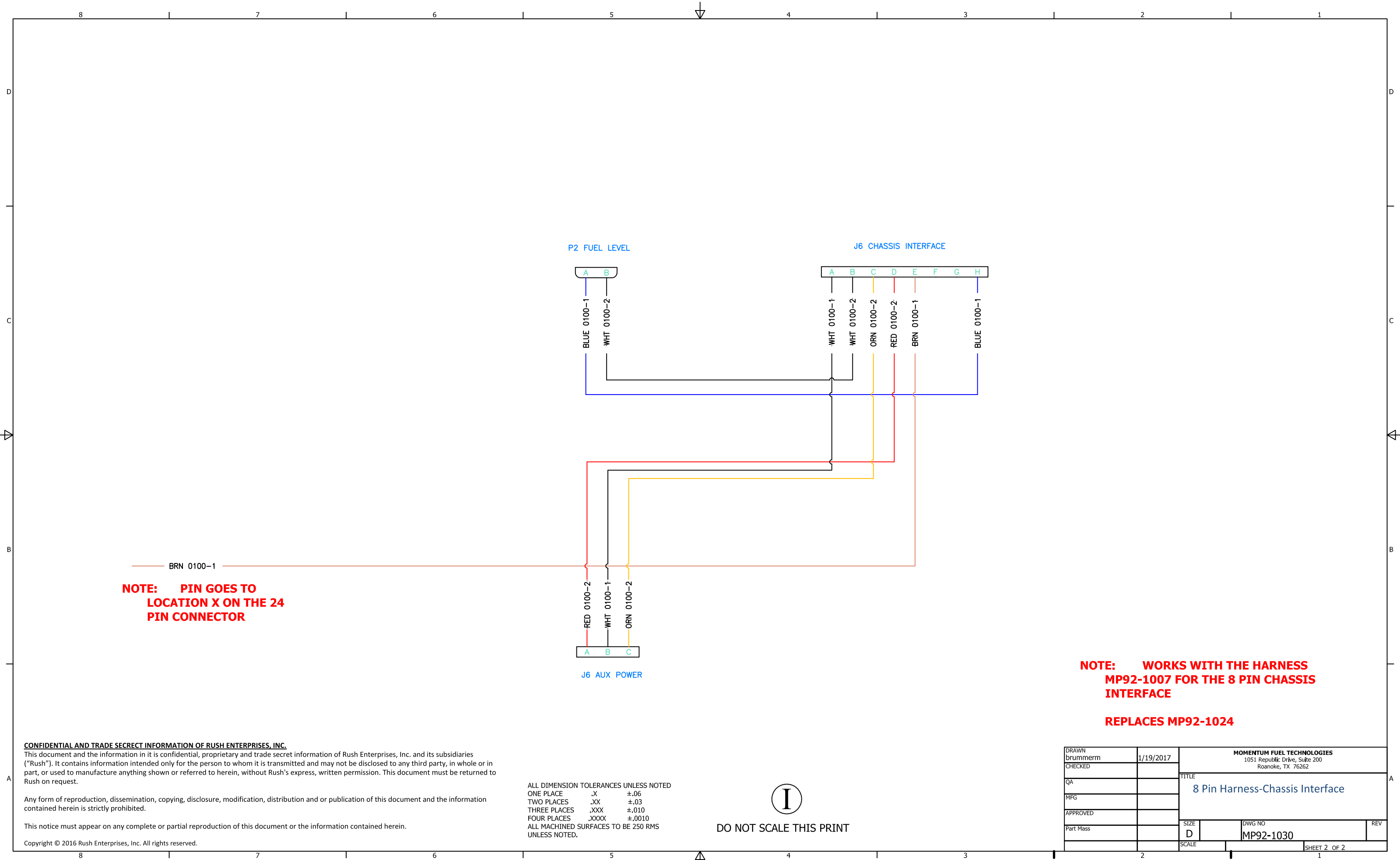
Copyright © 2016 Rush Enterprises, Inc. All rights reserved.

ALL DIMENSION TOLERANCES UNLESS NOTED  
 ONE PLACE .X ±.06  
 TWO PLACES .XX ±.03  
 THREE PLACES .XXX ±.010  
 FOUR PLACES .XXXX ±.0010  
 ALL MACHINED SURFACES TO BE 250 RMS UNLESS NOTED.



DO NOT SCALE THIS PRINT

DRAWN brummern	1/19/2017	MOMENTUM FUEL TECHNOLOGIES 1051 Republic Drive, Suite 200 Roanoke, TX 76262		
CHECKED		TITLE 8 Pin Harness-Chassis Interface		
QA				
MFG				
APPROVED				
Part Mass		SIZE D	DWG NO MP92-1030	REV
		SCALE		SHEET 1 OF 2



**CONFIDENTIAL AND TRADE SECRET INFORMATION OF RUSH ENTERPRISES, INC.**

This document and the information in it is confidential, proprietary and trade secret information of Rush Enterprises, Inc. and its subsidiaries ("Rush"). It contains information intended only for the person to whom it is transmitted and may not be disclosed to any third party, in whole or in part, or used to manufacture anything shown or referred to herein, without Rush's express, written permission. This document must be returned to Rush on request.

Any form of reproduction, dissemination, copying, disclosure, modification, distribution and or publication of this document and the information contained herein is strictly prohibited.

This notice must appear on any complete or partial reproduction of this document or the information contained herein.

Copyright © 2016 Rush Enterprises, Inc. All rights reserved.

ALL DIMENSION TOLERANCES UNLESS NOTED  
 ONE PLACE .X ±.06  
 TWO PLACES .XX ±.03  
 THREE PLACES .XXX ±.010  
 FOUR PLACES .XXXX ±.0010  
 ALL MACHINED SURFACES TO BE 250 RMS UNLESS NOTED.



DO NOT SCALE THIS PRINT

**NOTE: WORKS WITH THE HARNESS MP92-1007 FOR THE 8 PIN CHASSIS INTERFACE**

**REPLACES MP92-1024**

DRAWN brummerrm	1/19/2017	<b>MOMENTUM FUEL TECHNOLOGIES</b> 1051 Republic Drive, Suite 200 Roanoke, TX 76262	
CHECKED		TITLE <b>8 Pin Harness-Chassis Interface</b>	
QA			
MFG			
APPROVED			
Part Mass		SIZE D	DWG NO MP92-1030
		SCALE	REV
			SHEET 2 OF 2