

NOTES:

- 1. HARNESS TO BE BRAIDED WITH VN4400S OR EQUIVALENT PVC COATED YARN**
- 2. USE WITH AUX. FILL ON OPPOSITE TANK WITH DRIVEAWAY PROTECTION OR SPLIT SYSTEM AUX TANK WITH SOLENOID SHUTOFF VALVE**
- 3. REPLACES MP92-1011**

CONFIDENTIAL AND TRADE SECRET INFORMATION OF RUSH ENTERPRISES, INC.

This document and the information in it is confidential, proprietary and trade secret information of Rush Enterprises, Inc. and its subsidiaries ("Rush"). It contains information intended only for the person to whom it is transmitted and may not be disclosed to any third party, in whole or in part, or used to manufacture anything shown or referred to herein, without Rush's express, written permission. This document must be returned to Rush on request.

Any form of reproduction, dissemination, copying, disclosure, modification, distribution and or publication of this document and the information contained herein is strictly prohibited.

This notice must appear on any complete or partial reproduction of this document or the information contained herein.

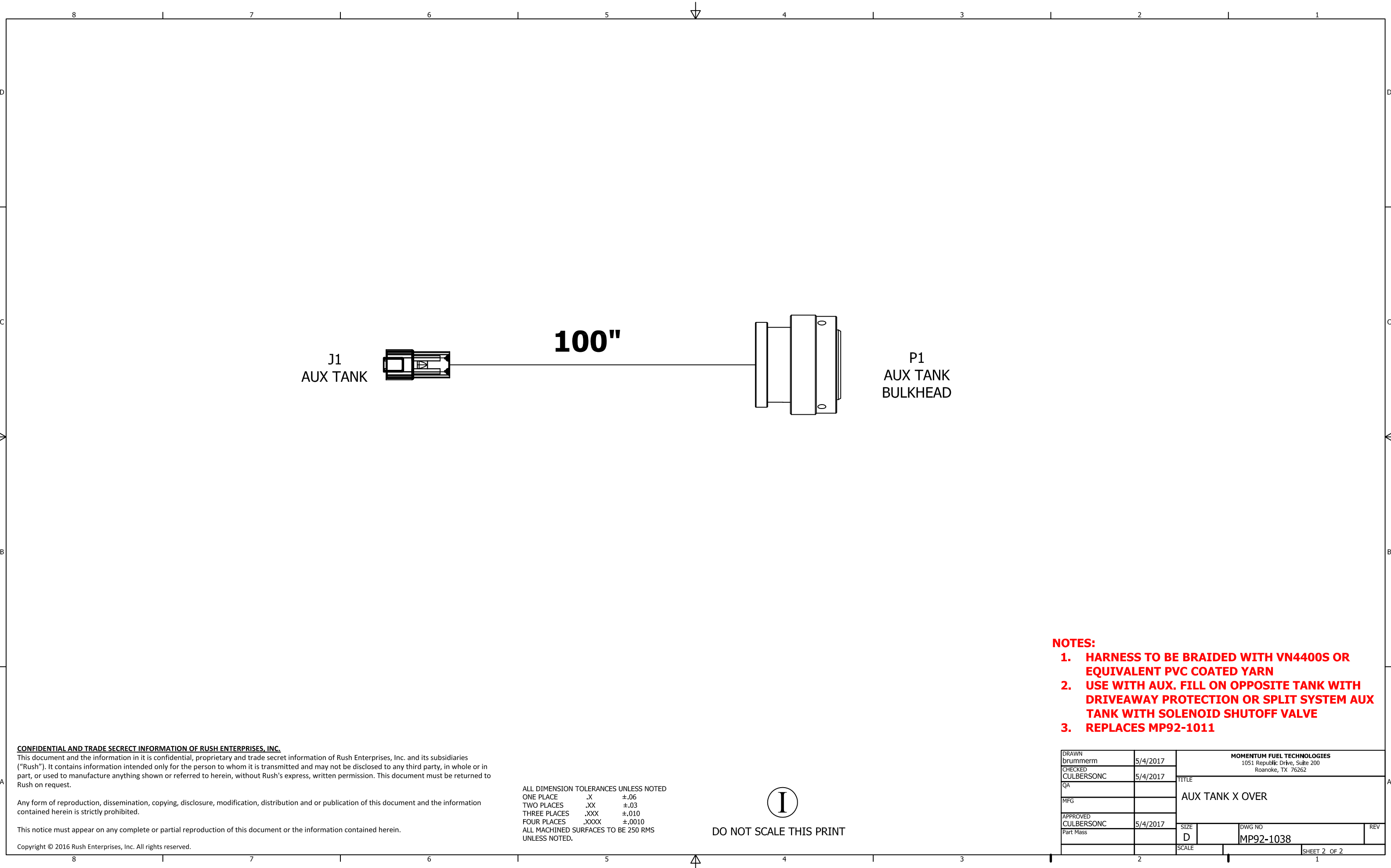
Copyright © 2016 Rush Enterprises, Inc. All rights reserved.

ALL DIMENSION TOLERANCES UNLESS NOTED
 ONE PLACE .X ±.06
 TWO PLACES .XX ±.03
 THREE PLACES .XXX ±.010
 FOUR PLACES .XXXX ±.0010
 ALL MACHINED SURFACES TO BE 250 RMS UNLESS NOTED.



DO NOT SCALE THIS PRINT

| | | | |
|------------------------|----------|---|---------------------|
| DRAWN brummern | 5/4/2017 | MOMENTUM FUEL TECHNOLOGIES 1051 Republic Drive, Suite 200 Roanoke, TX 76262 | |
| CHECKED CULBERSONC | 5/4/2017 | | |
| QA | | TITLE HARNESS-AUX TANK X OVER | |
| MFG | | | |
| APPROVED CULBERSONC | 5/4/2017 | SIZE D | DWG NO MP92-1038 |
| Part Mass | | SCALE | REV |
| | | SHEET 1 OF 2 | |



J1
AUX TANK

100"

P1
AUX TANK
BULKHEAD

NOTES:

- 1. HARNESS TO BE BRAIDED WITH VN4400S OR EQUIVALENT PVC COATED YARN**
- 2. USE WITH AUX. FILL ON OPPOSITE TANK WITH DRIVEAWAY PROTECTION OR SPLIT SYSTEM AUX TANK WITH SOLENOID SHUTOFF VALVE**
- 3. REPLACES MP92-1011**

CONFIDENTIAL AND TRADE SECRET INFORMATION OF RUSH ENTERPRISES, INC.
 This document and the information in it is confidential, proprietary and trade secret information of Rush Enterprises, Inc. and its subsidiaries ("Rush"). It contains information intended only for the person to whom it is transmitted and may not be disclosed to any third party, in whole or in part, or used to manufacture anything shown or referred to herein, without Rush's express, written permission. This document must be returned to Rush on request.

Any form of reproduction, dissemination, copying, disclosure, modification, distribution and or publication of this document and the information contained herein is strictly prohibited.

This notice must appear on any complete or partial reproduction of this document or the information contained herein.

Copyright © 2016 Rush Enterprises, Inc. All rights reserved.

ALL DIMENSION TOLERANCES UNLESS NOTED
 ONE PLACE .X ±.06
 TWO PLACES .XX ±.03
 THREE PLACES .XXX ±.010
 FOUR PLACES .XXXX ±.0010
 ALL MACHINED SURFACES TO BE 250 RMS UNLESS NOTED.



DO NOT SCALE THIS PRINT

| | | | | |
|------------------------|----------|---|---------------------|--------------|
| DRAWN brummerm | 5/4/2017 | MOMENTUM FUEL TECHNOLOGIES 1051 Republic Drive, Suite 200 Roanoke, TX 76262 | | |
| CHECKED CULBERSONC | 5/4/2017 | | | |
| QA | | TITLE AUX TANK X OVER | | |
| MFG | | | | |
| APPROVED CULBERSONC | 5/4/2017 | SIZE D | DWG NO MP92-1038 | REV |
| Part Mass | | SCALE | | SHEET 2 OF 2 |