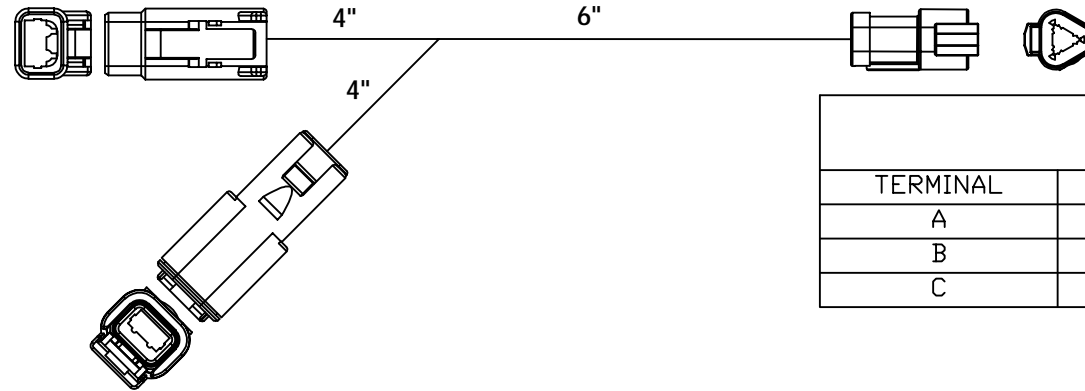


P1 J1939		
TERMINAL	WIRE	WIRE SIZE
1	YEL	18 AWG TXL
2	GRN	18 AWG TXL



J2 J1939		
TERMINAL	WIRE	WIRE SIZE
A	YEL	18 AWG TXL
B	GRN	18 AWG TXL
C	PLUG	N/A

J1 J1939		
TERMINAL	WIRE	WIRE SIZE
1	YEL	18 AWG TXL
2	GRN	18 AWG TXL

**NOTES:**

1. **HARNES TO BE BRAIDED WITH VN4400S OR EQUIVALENT PVC COATED YARN**
2. **USE TO Y INTO J-1939 CONNECTION FOR FREIGHTLINER, VOLVO, AND MACK.**
3. **PLUG ALL UNUSED CAVITIES**
4. **ALL WIRES TO BE 18 AWG TXL**
5. **WIRES TO BE TWISTED PAIRS, 1 TWIST PER INCH**

**CONFIDENTIAL AND TRADE SECRET INFORMATION OF NATURAL GAS FUEL SYSTEMS, INC. dba MOMENTUM FUEL TECHNOLOGIES**

This document and the information in it is confidential, proprietary and trade secret information of Natural Gas Fuel Systems, Inc. dba Momentum Fuel Technologies on behalf of itself and its subsidiaries and affiliates ("Momentum"). It contains information intended only for the person to whom it is transmitted and may not be disclosed to any third party, in whole or in part, or used to manufacture anything shown or referred to herein, without Momentum's express, written permission. This document must be returned to Momentum on request.

Any form of reproduction, dissemination, copying, disclosure, modification, distribution, and or publication of this document and the information contained herein is strictly prohibited.

This notice must appear on any complete or partial reproduction of this document or the information contained herein.

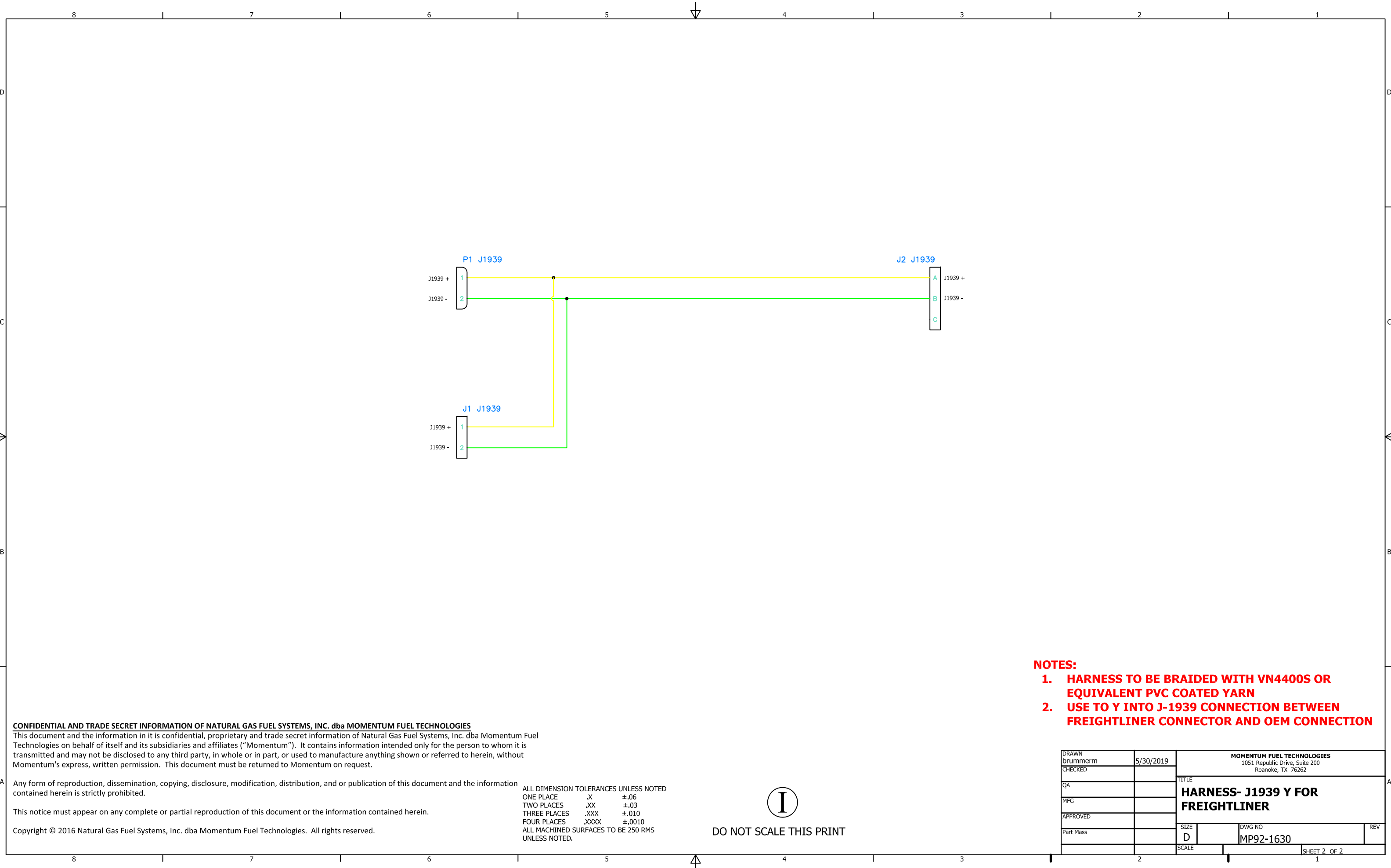
Copyright © 2016 Natural Gas Fuel Systems, Inc. dba Momentum Fuel Technologies. All rights reserved.

ALL DIMENSION TOLERANCES UNLESS NOTED  
 ONE PLACE .X ±.06  
 TWO PLACES .XX ±.03  
 THREE PLACES .XXX ±.010  
 FOUR PLACES .XXXX ±.0010  
 ALL MACHINED SURFACES TO BE 250 RMS UNLESS NOTED.



DO NOT SCALE THIS PRINT

DRAWN brummerrm	5/30/2019	MOMENTUM FUEL TECHNOLOGIES 1051 Republic Drive, Suite 200 Roanoke, TX 76262	
CHECKED CULBERSONC	6/3/2019	TITLE <b>HARNES- J1939 Y WITH DTM CONNECTORS</b>	
QA		SIZE D	DWG NO MP92-1630
MFG		SCALE	REV
APPROVED CULBERSONC	6/3/2019	SHEET 1 OF 2	
Part Mass			



**CONFIDENTIAL AND TRADE SECRET INFORMATION OF NATURAL GAS FUEL SYSTEMS, INC. dba MOMENTUM FUEL TECHNOLOGIES**  
 This document and the information in it is confidential, proprietary and trade secret information of Natural Gas Fuel Systems, Inc. dba Momentum Fuel Technologies on behalf of itself and its subsidiaries and affiliates ("Momentum"). It contains information intended only for the person to whom it is transmitted and may not be disclosed to any third party, in whole or in part, or used to manufacture anything shown or referred to herein, without Momentum's express, written permission. This document must be returned to Momentum on request.

Any form of reproduction, dissemination, copying, disclosure, modification, distribution, and or publication of this document and the information contained herein is strictly prohibited.

This notice must appear on any complete or partial reproduction of this document or the information contained herein.

Copyright © 2016 Natural Gas Fuel Systems, Inc. dba Momentum Fuel Technologies. All rights reserved.

ALL DIMENSION TOLERANCES UNLESS NOTED  
 ONE PLACE .X ±.06  
 TWO PLACES .XX ±.03  
 THREE PLACES .XXX ±.010  
 FOUR PLACES .XXXX ±.0010  
 ALL MACHINED SURFACES TO BE 250 RMS UNLESS NOTED.



DO NOT SCALE THIS PRINT

- NOTES:**
- HARNES TO BE BRAIDED WITH VN4400S OR EQUIVALENT PVC COATED YARN**
  - USE TO Y INTO J-1939 CONNECTION BETWEEN FREIGHTLINER CONNECTOR AND OEM CONNECTION**

DRAWN brummerrm	5/30/2019	<b>MOMENTUM FUEL TECHNOLOGIES</b> 1051 Republic Drive, Suite 200 Roanoke, TX 76262		
CHECKED		TITLE <b>HARNES- J1939 Y FOR FREIGHTLINER</b>		
QA		SIZE D	DWG NO MP92-1630	REV
MFG		SCALE		
APPROVED				
Part Mass				
				SHEET 2 OF 2