

J1 POWER/J1939 CONNECTION

J2 TERMINATING RESISTOR

P2 TERMINATING RESISTOR

P1 FUEL GAUGE

108"

4"

8"

108"

12"

LOOM ENDS

ANALOG SIGNAL/ BACKLIGHT

NOTES:

- 1) HARNESS TO BE COVERED WITH SPLIT LOOM.
- 2) WIRES TO BE 18 GA TXL
- 3) ANALOG SIGNAL / BACKLIGHT TO BE CONVOLUTED TUBING

SEE CHART A

SEE CHART B

MP92-1637-AB

CONFIDENTIAL AND TRADE SECRET INFORMATION OF NATURAL GAS FUEL SYSTEMS, INC. dba MOMENTUM FUEL TECHNOLOGIES
 This document and the information in it is confidential, proprietary and trade secret information of Natural Gas Fuel Systems, Inc. dba Momentum Fuel Technologies on behalf of itself and its subsidiaries and affiliates ("Momentum"). It contains information intended only for the person to whom it is transmitted and may not be disclosed to any third party, in whole or in part, or used to manufacture anything shown or referred to herein, without Momentum's express, written permission. This document must be returned to Momentum on request.

Any form of reproduction, dissemination, copying, disclosure, modification, distribution, and or publication of this document and the information contained herein is strictly prohibited.

This notice must appear on any complete or partial reproduction of this document or the information contained herein.

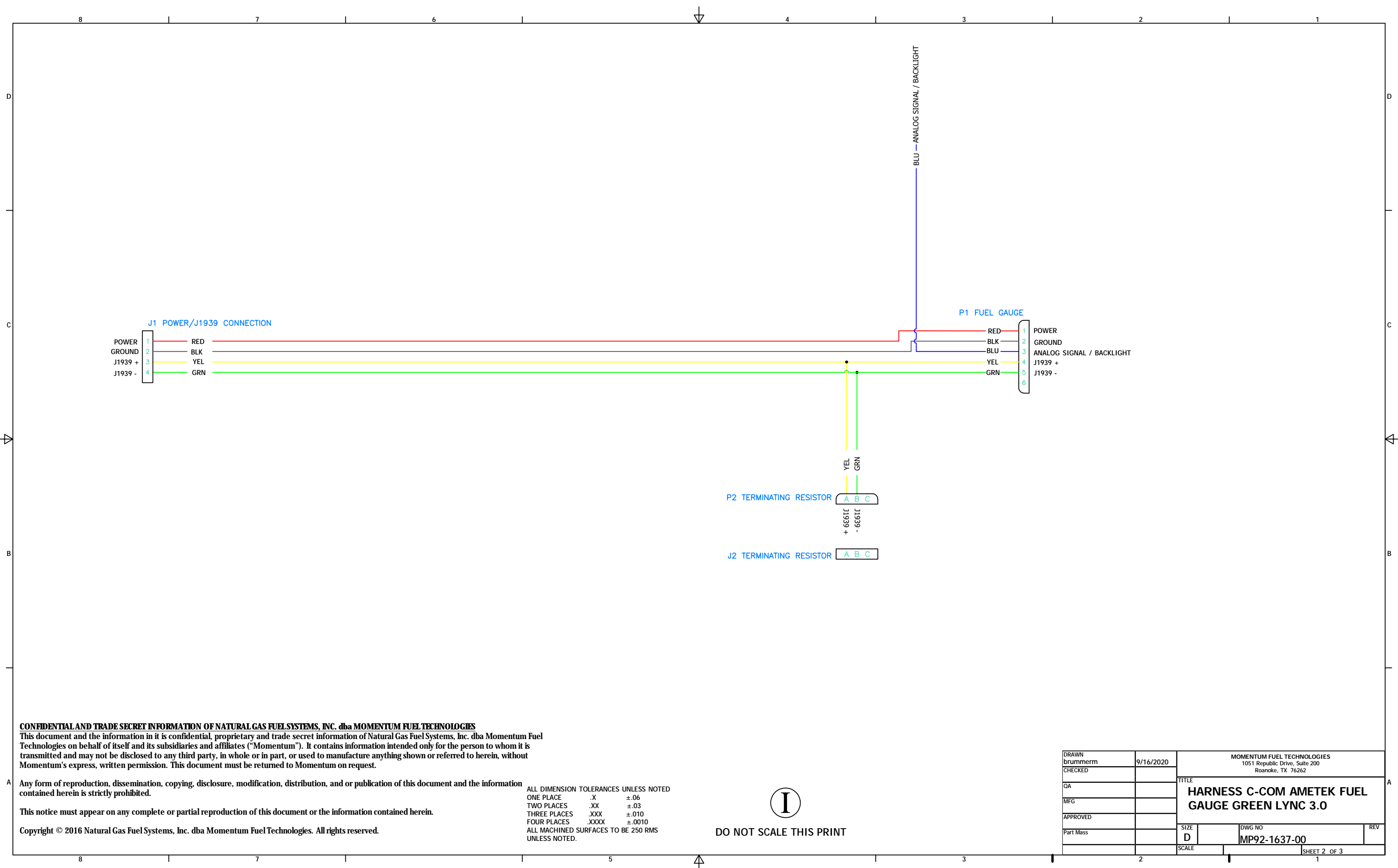
Copyright © 2016 Natural Gas Fuel Systems, Inc. dba Momentum Fuel Technologies. All rights reserved.

ALL DIMENSION TOLERANCES UNLESS NOTED
 ONE PLACE .X ±.06
 TWO PLACES .XX ±.03
 THREE PLACES .XXX ±.010
 FOUR PLACES .XXXX ±.0010
 ALL MACHINED SURFACES TO BE 250 RMS UNLESS NOTED.



DO NOT SCALE THIS PRINT

| | | | |
|-------------------|-----------|---|------------------------|
| DRAWN brummerm | 9/16/2020 | MOMENTUM FUEL TECHNOLOGIES 1051 Republic Drive, Suite 200 Roanoke, TX 76262 | |
| CHECKED | | TITLE HARNESS C-COM AMETEK FUEL GAUGE GREEN LYNC 3.0 | |
| QA | | SIZE D | DWG NO MP92-1637-00 |
| MFG | | SCALE | REV |
| APPROVED | | | |
| Part Mass | | | |
| | | | SHEET 1 OF 3 |



CONFIDENTIAL AND TRADE SECRET INFORMATION OF NATURAL GAS FUEL SYSTEMS, INC. dba MOMENTUM FUEL TECHNOLOGIES
 This document and the information in it is confidential, proprietary and trade secret information of Natural Gas Fuel Systems, Inc. dba Momentum Fuel Technologies on behalf of itself and its subsidiaries and affiliates ("Momentum"). It contains information intended only for the person to whom it is transmitted and may not be disclosed to any third party, in whole or in part, or used to manufacture anything shown or referred to herein, without Momentum's express, written permission. This document must be returned to Momentum on request.

Any form of reproduction, dissemination, copying, disclosure, modification, distribution, and or publication of this document and the information contained herein is strictly prohibited.

This notice must appear on any complete or partial reproduction of this document or the information contained herein.

Copyright © 2016 Natural Gas Fuel Systems, Inc. dba Momentum Fuel Technologies. All rights reserved.

ALL DIMENSION TOLERANCES UNLESS NOTED
 ONE PLACE .X ±.06
 TWO PLACES .XX ±.03
 THREE PLACES .XXX ±.010
 FOUR PLACES .XXXX ±.0010
 ALL MACHINED SURFACES TO BE 250 RMS UNLESS NOTED.



DO NOT SCALE THIS PRINT

| | | | |
|-------------------|-----------|---|------------------------|
| DRAWN brummerm | 9/16/2020 | MOMENTUM FUEL TECHNOLOGIES 1051 Republic Drive, Suite 200 Roanoke, TX 76262 | |
| CHECKED | | TITLE HARNES C-COM AMETEK FUEL GAUGE GREEN LYNC 3.0 | |
| QA | | SIZE D | DWG NO MP92-1637-00 |
| MFG | | SCALE | REV |
| APPROVED | | SHEET 2 OF 3 | |
| Part Mass | | | |

8 4 6 4 3 2 1

| CHART A | | |
|-----------------------|--------------------------------------|------------|
| IDENTIFICATION NUMBER | DESCRIPTION | PARTS USED |
| 1 | HARNESS WITHOUT TERMINATING RESISTOR | |
| 2 | HARNESS WITH TERMINATING RESISTOR | |

| CHART B FUTURE USE | | |
|--------------------|--|--|
| | | |
| | | |
| | | |

CONFIDENTIAL AND TRADE SECRET INFORMATION OF NATURAL GAS FUEL SYSTEMS, INC. dba MOMENTUM FUEL TECHNOLOGIES
 This document and the information in it is confidential, proprietary and trade secret information of Natural Gas Fuel Systems, Inc. dba Momentum Fuel Technologies on behalf of itself and its subsidiaries and affiliates ("Momentum"). It contains information intended only for the person to whom it is transmitted and may not be disclosed to any third party, in whole or in part, or used to manufacture anything shown or referred to herein, without Momentum's express, written permission. This document must be returned to Momentum on request.

Any form of reproduction, dissemination, copying, disclosure, modification, distribution, and or publication of this document and the information contained herein is strictly prohibited.

This notice must appear on any complete or partial reproduction of this document or the information contained herein.

Copyright © 2016 Natural Gas Fuel Systems, Inc. dba Momentum Fuel Technologies. All rights reserved.

ALL DIMENSION TOLERANCES UNLESS NOTED
 ONE PLACE .X ±.06
 TWO PLACES .XX ±.03
 THREE PLACES .XXX ±.010
 FOUR PLACES .XXXX ±.0010
 ALL MACHINED SURFACES TO BE 250 RMS UNLESS NOTED.



DO NOT SCALE THIS PRINT

| | | | |
|-------------------|-----------|---|------------------------|
| DRAWN brummerm | 9/16/2020 | MOMENTUM FUEL TECHNOLOGIES 1051 Republic Drive, Suite 200 Roanoke, TX 76262 | |
| CHECKED | | TITLE HARNESS C-COM AMETEK FUEL GAUGE GREEN LYNC 3.0 | |
| QA | | SIZE D | DWG NO MP92-1637-00 |
| MFG | | SCALE | REV |
| APPROVED | | | |
| Part Mass | | | |
| | | | SHEET 3 OF 3 |

7 5 3 2 1