

8 7 6 5 4 3 2 1

WIRES FROM CONNECTOR J1 GO DIRECTLY TO THE SAME CORRESPONDING TERMINALS ON P1 AND DO NOT CONTAIN ANY SPLICES

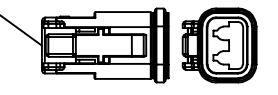
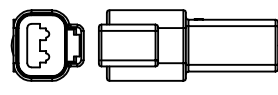
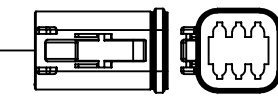
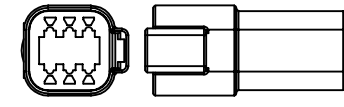
WIRES FROM CONNECTOR P1 GO DIRECTLY TO THE SAME CORRESPONDING TERMINALS ON J1 AND DO NOT CONTAIN ANY SPLICES

J1 CONNECTOR	
TERMINAL	WIRE COLOR
1	RED
2	BLACK
3	WHITE
4	GREEN
5	BROWN
6	BLUE

P1 CONNECTOR	
TERMINAL	WIRE COLOR
1	RED
2	BLACK
3	WHITE
4	GREEN
5	BROWN
6	BLUE

J1
CONNECTION TO SENSOR SIDE

P1
CONNECTION TO CHASSIS SIDE



J2 CONNECTOR	
TERMINAL	WIRE COLOR
1	YELLOW
2	GREEN

P2	
TERMINAL	WIRE COLOR
1	YELLOW
2	GREEN

P2
J1939 TO CHASSIS

WIRES FROM PIN J2 ARE TWISTED PAIR WITH APPROXIMATELY 1 TWIST PER INCH, AND GO TO THE SAME CORRESPONDING TERMINAL IN CONNECTOR P2 AND DO NOT CONTAIN ANY SPLICES

WIRES FROM PIN P2 ARE TWISTED PAIR WITH APPROXIMATELY 1 TWIST PER INCH, AND GO TO THE SAME CORRESPONDING TERMINAL IN CONNECTOR J2 AND DO NOT CONTAIN ANY SPLICES

NOTES:

- 1) ALL WIRES TO BE 18 AWG TXL
- 2) YELLOW AND GREEN J1939 WIRES TO BE TWISTED PAIR WITH APPROXIMATELY 1 TWIST PER INCH
- 3) VN 4400S OR EQUIVALENT PVC COATED YARN
- 4) DASH VARIATION REPRESENTS LLL LENGTH IN INCHES

CONFIDENTIAL AND TRADE SECRET INFORMATION OF NATURAL GAS FUEL SYSTEMS, INC. dba MOMENTUM FUEL TECHNOLOGIES

This document and the information in it is confidential, proprietary and trade secret information of Natural Gas Fuel Systems, Inc. dba Momentum Fuel Technologies on behalf of itself and its subsidiaries and affiliates ("Momentum"). It contains information intended only for the person to whom it is transmitted and may not be disclosed to any third party, in whole or in part, or used to manufacture anything shown or referred to herein, without Momentum's express, written permission. This document must be returned to Momentum on request.

Any form of reproduction, dissemination, copying, disclosure, modification, distribution, and or publication of this document and the information contained herein is strictly prohibited.

This notice must appear on any complete or partial reproduction of this document or the information contained herein.

Copyright © 2016 Natural Gas Fuel Systems, Inc. dba Momentum Fuel Technologies. All rights reserved.

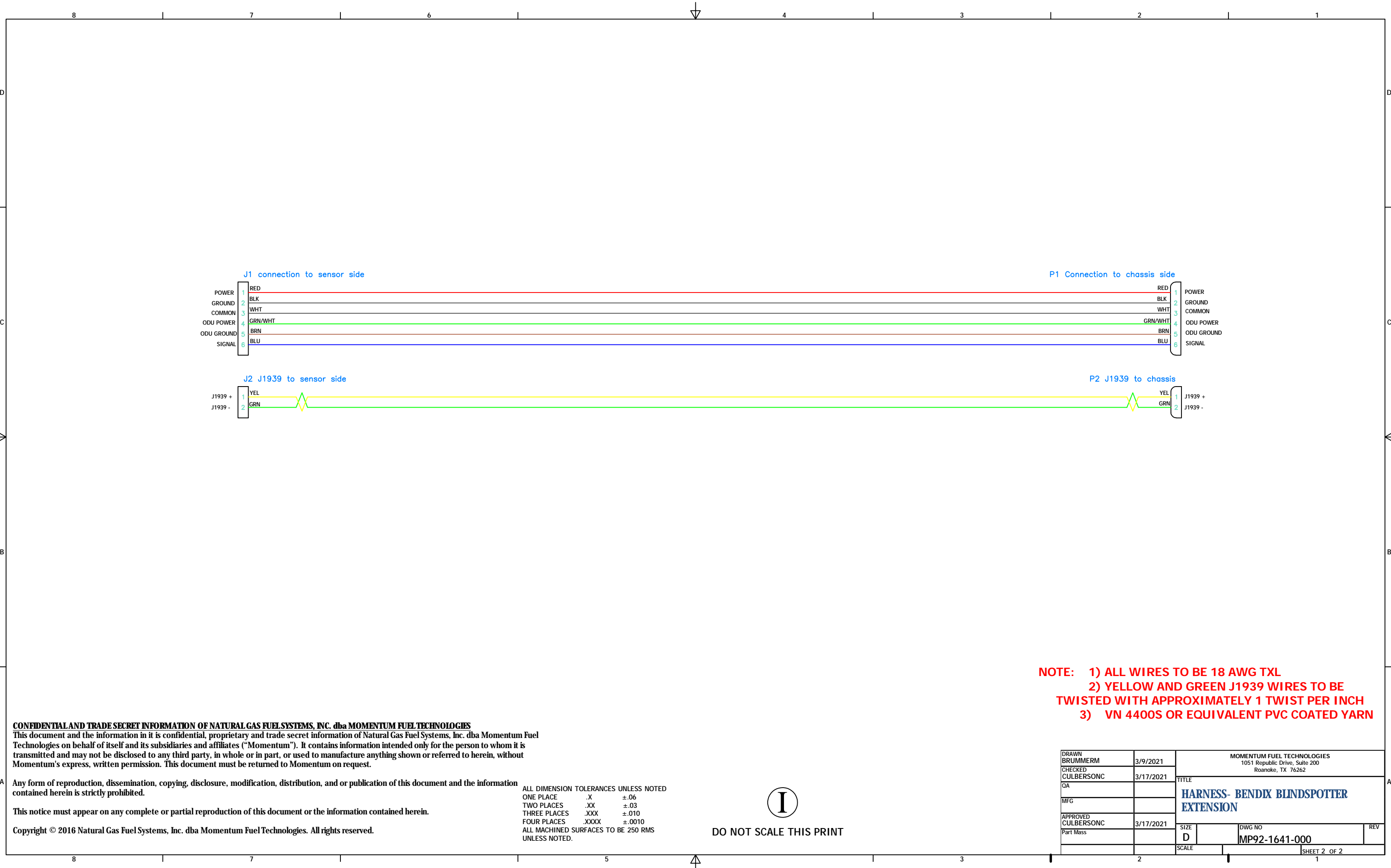
ALL DIMENSION TOLERANCES UNLESS NOTED
 ONE PLACE .X ±.06
 TWO PLACES .XX ±.03
 THREE PLACES .XXX ±.010
 FOUR PLACES .XXXX ±.0010
 ALL MACHINED SURFACES TO BE 250 RMS UNLESS NOTED.



DO NOT SCALE THIS PRINT

DRAWN brummerm	3/9/2021	MOMENTUM FUEL TECHNOLOGIES 1051 Republic Drive, Suite 200 Roanoke, TX 76262	
CHECKED culbersonc	3/17/2021	TITLE HARNISS- BENDIX BLINDSPOTTER EXTENSION	
QA		SIZE D	DWG NO MP92-1641-000
MFG		SCALE	REV
APPROVED culbersonc	3/17/2021	SHEET 1 OF 2	
Part Mass			

8 7 6 5 4 3 2 1



**NOTE: 1) ALL WIRES TO BE 18 AWG TXL
 2) YELLOW AND GREEN J1939 WIRES TO BE TWISTED WITH APPROXIMATELY 1 TWIST PER INCH
 3) VN 4400S OR EQUIVALENT PVC COATED YARN**

CONFIDENTIAL AND TRADE SECRET INFORMATION OF NATURAL GAS FUEL SYSTEMS, INC. dba MOMENTUM FUEL TECHNOLOGIES
 This document and the information in it is confidential, proprietary and trade secret information of Natural Gas Fuel Systems, Inc. dba Momentum Fuel Technologies on behalf of itself and its subsidiaries and affiliates ("Momentum"). It contains information intended only for the person to whom it is transmitted and may not be disclosed to any third party, in whole or in part, or used to manufacture anything shown or referred to herein, without Momentum's express, written permission. This document must be returned to Momentum on request.

Any form of reproduction, dissemination, copying, disclosure, modification, distribution, and or publication of this document and the information contained herein is strictly prohibited.

This notice must appear on any complete or partial reproduction of this document or the information contained herein.

Copyright © 2016 Natural Gas Fuel Systems, Inc. dba Momentum Fuel Technologies. All rights reserved.

ALL DIMENSION TOLERANCES UNLESS NOTED
 ONE PLACE .X ±.06
 TWO PLACES .XX ±.03
 THREE PLACES .XXX ±.010
 FOUR PLACES .XXXX ±.0010
 ALL MACHINED SURFACES TO BE 250 RMS UNLESS NOTED.



DO NOT SCALE THIS PRINT

DRAWN BRUMMERM	3/9/2021	MOMENTUM FUEL TECHNOLOGIES 1051 Republic Drive, Suite 200 Roanoke, TX 76262	
CHECKED CULBERSONC	3/17/2021	TITLE HARNES- BENDIX BLINDSPOTTER EXTENSION	
QA		SIZE D	DWG NO MP92-1641-000
MFG		SCALE	REV
APPROVED CULBERSONC	3/17/2021	SHEET 2 OF 2	
Part Mass			