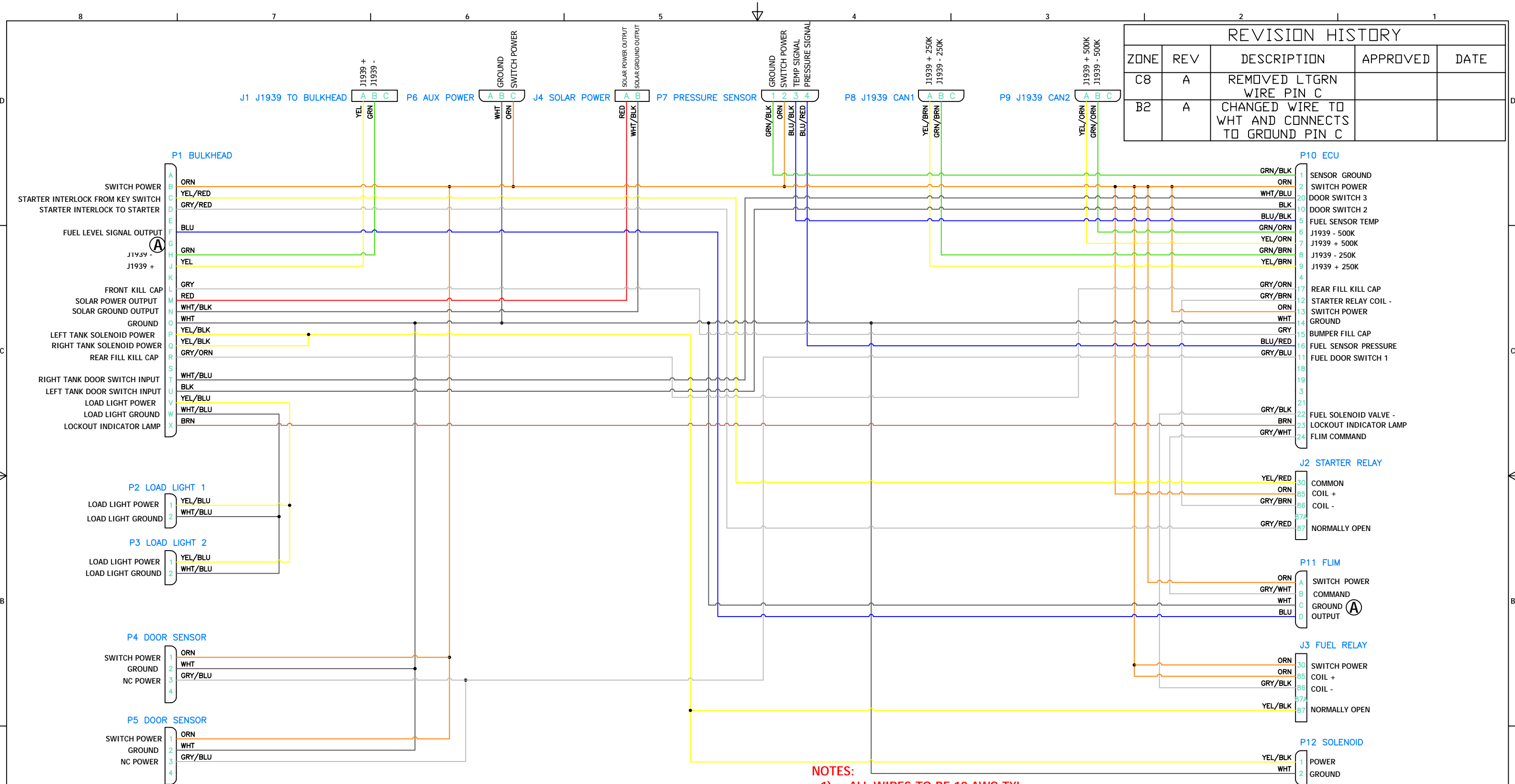


REVISION HISTORY				
ZONE	REV	DESCRIPTION	APPROVED	DATE
C8	A	REMOVED LTGRN WIRE PIN C		
B2	A	CHANGED WIRE TO WHT AND CONNECTS TO GROUND PIN C		



- NOTES:**
- 1) ALL WIRES TO BE 18 AWG TXL
 - 2) HARNESS TO BE BRAIDED WITH VN4400S OR EQUIVALENT PVC COATED YARN
 - 3) PLUG ALL UNUSED CAVITIES
 - 4) REPLACES MP92-1628



DO NOT SCALE THIS PRINT

CONFIDENTIAL AND TRADE SECRET INFORMATION OF NATURAL GAS FUEL SYSTEMS, INC. dba MOMENTUM FUEL TECHNOLOGIES
 This document and the information in it is confidential, proprietary and trade secret information of Natural Gas Fuel Systems, Inc. dba Momentum Fuel Technologies on behalf of itself and its subsidiaries and affiliates ("Momentum"). It contains information intended only for the person to whom it is transmitted and may not be disclosed to any third party, in whole or in part, or used to manufacture anything shown or referred to herein, without Momentum's express, written permission. This document must be returned to Momentum on request.

Any form of reproduction, dissemination, copying, disclosure, modification, distribution, and or publication of this document and the information contained herein is strictly prohibited.

This notice must appear on any complete or partial reproduction of this document or the information contained herein.

Copyright © 2016 Natural Gas Fuel Systems, Inc. dba Momentum Fuel Technologies. All rights reserved.

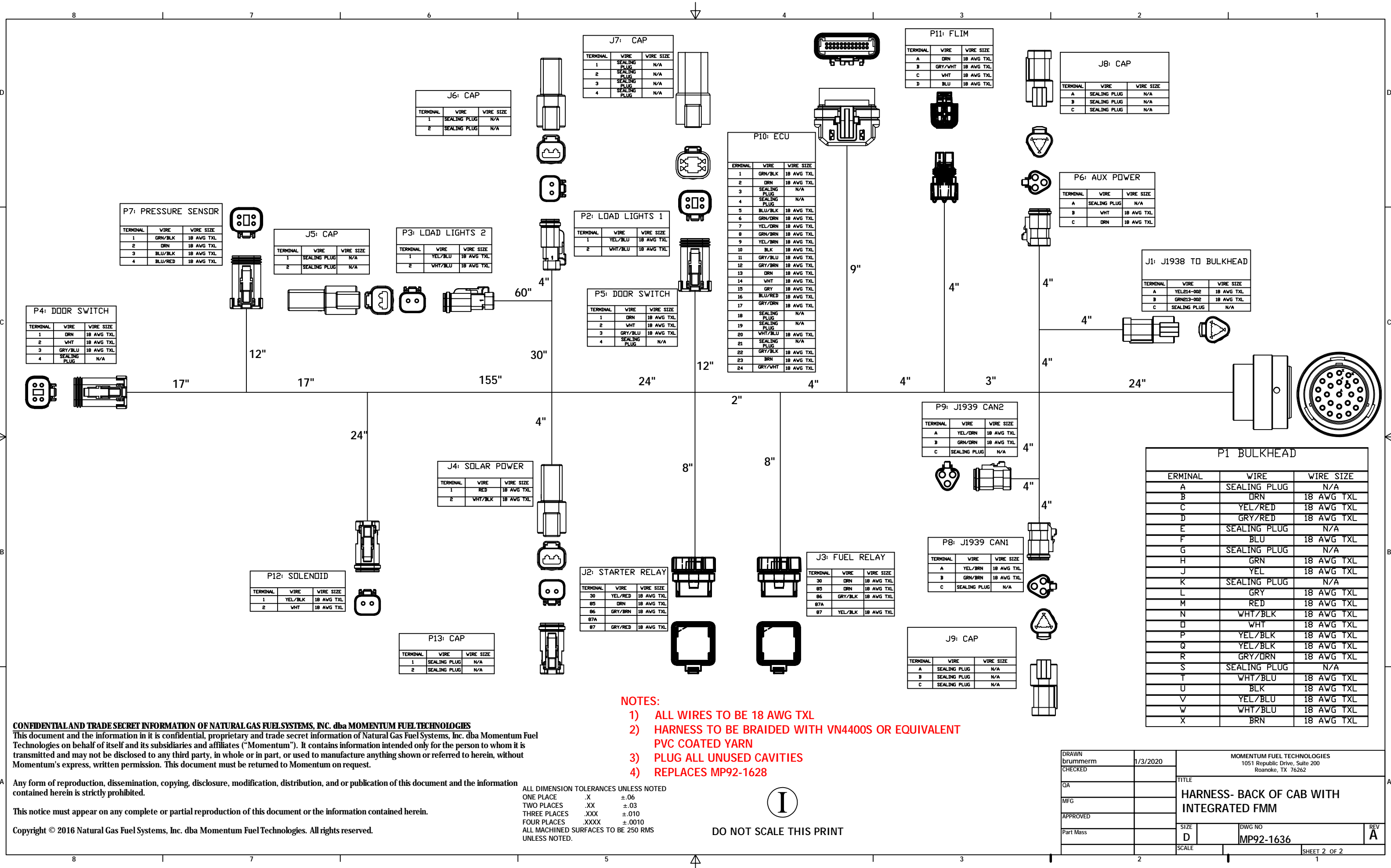
ALL DIMENSION TOLERANCES UNLESS NOTED

ONE PLACE	.X	±.06
TWO PLACES	.XX	±.03
THREE PLACES	.XXX	±.010
FOUR PLACES	.XXXX	±.0010

ALL MACHINED SURFACES TO BE 250 RMS UNLESS NOTED.

DRAWN brummer	1/3/2020	MOMENTUM FUEL TECHNOLOGIES 1051 Republic Drive, Suite 200 Roanoke, TX 76262	
CHECKED		TITLE HARNESS- BACK OF CAB WITH INTEGRATED FMM	
QA		SIZE D	DWG NO MP92-1636
MFG		SCALE	REV A
APPROVED			
Part Mass			

SHEET 1 OF 2



P7: PRESSURE SENSOR

TERMINAL	WIRE	WIRE SIZE
1	GRN/BLK	18 AWG TXL
2	DRN	18 AWG TXL
3	BLU/BLK	18 AWG TXL
4	BLU/RED	18 AWG TXL

J6: CAP

TERMINAL	WIRE	WIRE SIZE
1	SEALING PLUG	N/A
2	SEALING PLUG	N/A

J7: CAP

TERMINAL	WIRE	WIRE SIZE
1	SEALING PLUG	N/A
2	SEALING PLUG	N/A
3	SEALING PLUG	N/A
4	SEALING PLUG	N/A

P11: FLIM

TERMINAL	WIRE	WIRE SIZE
A	DRN	18 AWG TXL
B	GRY/WHT	18 AWG TXL
C	WHT	18 AWG TXL
D	BLU	18 AWG TXL

J8: CAP

TERMINAL	WIRE	WIRE SIZE
A	SEALING PLUG	N/A
B	SEALING PLUG	N/A
C	SEALING PLUG	N/A

J5: CAP

TERMINAL	WIRE	WIRE SIZE
1	SEALING PLUG	N/A
2	SEALING PLUG	N/A

P3: LOAD LIGHTS 2

TERMINAL	WIRE	WIRE SIZE
1	YEL/BLU	18 AWG TXL
2	WHT/BLU	18 AWG TXL

P2: LOAD LIGHTS 1

TERMINAL	WIRE	WIRE SIZE
1	YEL/BLU	18 AWG TXL
2	WHT/BLU	18 AWG TXL

P10: ECU

TERMINAL	WIRE	WIRE SIZE
1	GRN/BLK	18 AWG TXL
2	DRN	18 AWG TXL
3	SEALING PLUG	N/A
4	SEALING PLUG	N/A
5	BLU/BLK	18 AWG TXL
6	GRN/DRN	18 AWG TXL
7	YEL/DRN	18 AWG TXL
8	GRN/BRN	18 AWG TXL
9	YEL/BRN	18 AWG TXL
10	BLK	18 AWG TXL
11	GRY/BLU	18 AWG TXL
12	GRY/BRN	18 AWG TXL
13	DRN	18 AWG TXL
14	WHT	18 AWG TXL
15	GRY	18 AWG TXL
16	BLU/RED	18 AWG TXL
17	GRY/DRN	18 AWG TXL
18	SEALING PLUG	N/A
19	SEALING PLUG	N/A
20	WHT/BLU	18 AWG TXL
21	SEALING PLUG	N/A
22	GRY/BLK	18 AWG TXL
23	BRN	18 AWG TXL
24	GRY/WHT	18 AWG TXL

P6: AUX POWER

TERMINAL	WIRE	WIRE SIZE
A	SEALING PLUG	N/A
B	WHT	18 AWG TXL
C	DRN	18 AWG TXL

J1: J1938 TO BULKHEAD

TERMINAL	WIRE	WIRE SIZE
A	YEL214-002	18 AWG TXL
B	GRN213-002	18 AWG TXL
C	SEALING PLUG	N/A

P4: DOOR SWITCH

TERMINAL	WIRE	WIRE SIZE
1	DRN	18 AWG TXL
2	WHT	18 AWG TXL
3	GRY/BLU	18 AWG TXL
4	SEALING PLUG	N/A

P5: DOOR SWITCH

TERMINAL	WIRE	WIRE SIZE
1	DRN	18 AWG TXL
2	WHT	18 AWG TXL
3	GRY/BLU	18 AWG TXL
4	SEALING PLUG	N/A

P9: J1939 CAN2

TERMINAL	WIRE	WIRE SIZE
A	YEL/DRN	18 AWG TXL
B	GRN/DRN	18 AWG TXL
C	SEALING PLUG	N/A

P1 BULKHEAD

ERMINAL	WIRE	WIRE SIZE
A	SEALING PLUG	N/A
B	DRN	18 AWG TXL
C	YEL/RED	18 AWG TXL
D	GRY/RED	18 AWG TXL
E	SEALING PLUG	N/A
F	BLU	18 AWG TXL
G	SEALING PLUG	N/A
H	GRN	18 AWG TXL
J	YEL	18 AWG TXL
K	SEALING PLUG	N/A
L	GRY	18 AWG TXL
M	RED	18 AWG TXL
N	WHT/BLK	18 AWG TXL
O	WHT	18 AWG TXL
P	YEL/BLK	18 AWG TXL
Q	YEL/BLK	18 AWG TXL
R	GRY/DRN	18 AWG TXL
S	SEALING PLUG	N/A
T	WHT/BLU	18 AWG TXL
U	BLK	18 AWG TXL
V	YEL/BLU	18 AWG TXL
W	WHT/BLU	18 AWG TXL
X	BRN	18 AWG TXL

P12: SOLENOID

TERMINAL	WIRE	WIRE SIZE
1	YEL/BLK	18 AWG TXL
2	WHT	18 AWG TXL

J4: SOLAR POWER

TERMINAL	WIRE	WIRE SIZE
1	RED	18 AWG TXL
2	WHT/BLK	18 AWG TXL

J2: STARTER RELAY

TERMINAL	WIRE	WIRE SIZE
30	YEL/RED	18 AWG TXL
85	DRN	18 AWG TXL
86	GRY/BRN	18 AWG TXL
87A		
87	GRY/RED	18 AWG TXL

J3: FUEL RELAY

TERMINAL	WIRE	WIRE SIZE
30	DRN	18 AWG TXL
85	DRN	18 AWG TXL
86	GRY/BLK	18 AWG TXL
87	YEL/BLK	18 AWG TXL

P8: J1939 CAN1

TERMINAL	WIRE	WIRE SIZE
A	YEL/BRN	18 AWG TXL
B	GRN/BRN	18 AWG TXL
C	SEALING PLUG	N/A

J9: CAP

TERMINAL	WIRE	WIRE SIZE
A	SEALING PLUG	N/A
B	SEALING PLUG	N/A
C	SEALING PLUG	N/A

P13: CAP

TERMINAL	WIRE	WIRE SIZE
1	SEALING PLUG	N/A
2	SEALING PLUG	N/A

- NOTES:**
- 1) ALL WIRES TO BE 18 AWG TXL
 - 2) HARNESS TO BE BRAIDED WITH VN4400S OR EQUIVALENT PVC COATED YARN
 - 3) PLUG ALL UNUSED CAVITIES
 - 4) REPLACES MP92-1628

ALL DIMENSION TOLERANCES UNLESS NOTED
 ONE PLACE .X ±.06
 TWO PLACES .XX ±.03
 THREE PLACES .XXX ±.010
 FOUR PLACES .XXXX ±.0010
 ALL MACHINED SURFACES TO BE 250 RMS UNLESS NOTED.



DO NOT SCALE THIS PRINT

CONFIDENTIAL AND TRADE SECRET INFORMATION OF NATURAL GAS FUEL SYSTEMS, INC. dba MOMENTUM FUEL TECHNOLOGIES
 This document and the information in it is confidential, proprietary and trade secret information of Natural Gas Fuel Systems, Inc. dba Momentum Fuel Technologies on behalf of itself and its subsidiaries and affiliates ("Momentum"). It contains information intended only for the person to whom it is transmitted and may not be disclosed to any third party, in whole or in part, or used to manufacture anything shown or referred to herein, without Momentum's express, written permission. This document must be returned to Momentum on request.

Any form of reproduction, dissemination, copying, disclosure, modification, distribution, and or publication of this document and the information contained herein is strictly prohibited.

This notice must appear on any complete or partial reproduction of this document or the information contained herein.

Copyright © 2016 Natural Gas Fuel Systems, Inc. dba Momentum Fuel Technologies. All rights reserved.

DRAWN brummerm	1/3/2020	MOMENTUM FUEL TECHNOLOGIES 1051 Republic Drive, Suite 200 Roanoke, TX 76262	
CHECKED		TITLE HARNESS- BACK OF CAB WITH INTEGRATED FMM	
QA		SIZE D	DWG NO MP92-1636
MFG		SCALE	REV A
APPROVED		SHEET 2 OF 2	
Part Mass			