

**NOTE:** 1) USE ONLY WITH MOMENTUM CHASSIS INTERFACE HARNESS WITH 8 PIN INTERFACE CONNECTOR.  
 2) USE ONLY WHEN OEM CHASSIS HARNESS DOES NOT HAVE THE 8 PIN CHASSIS INTERFACE CONNECTOR

**CONFIDENTIAL AND TRADE SECRET INFORMATION OF RUSH ENTERPRISES, INC.**

This document and the information in it is confidential, proprietary and trade secret information of Rush Enterprises, Inc. and its subsidiaries ("Rush"). It contains information intended only for the person to whom it is transmitted and may not be disclosed to any third party, in whole or in part, or used to manufacture anything shown or referred to herein, without Rush's express, written permission. This document must be returned to Rush on request.

Any form of reproduction, dissemination, copying, disclosure, modification, distribution and or publication of this document and the information contained herein is strictly prohibited.

This notice must appear on any complete or partial reproduction of this document or the information contained herein.

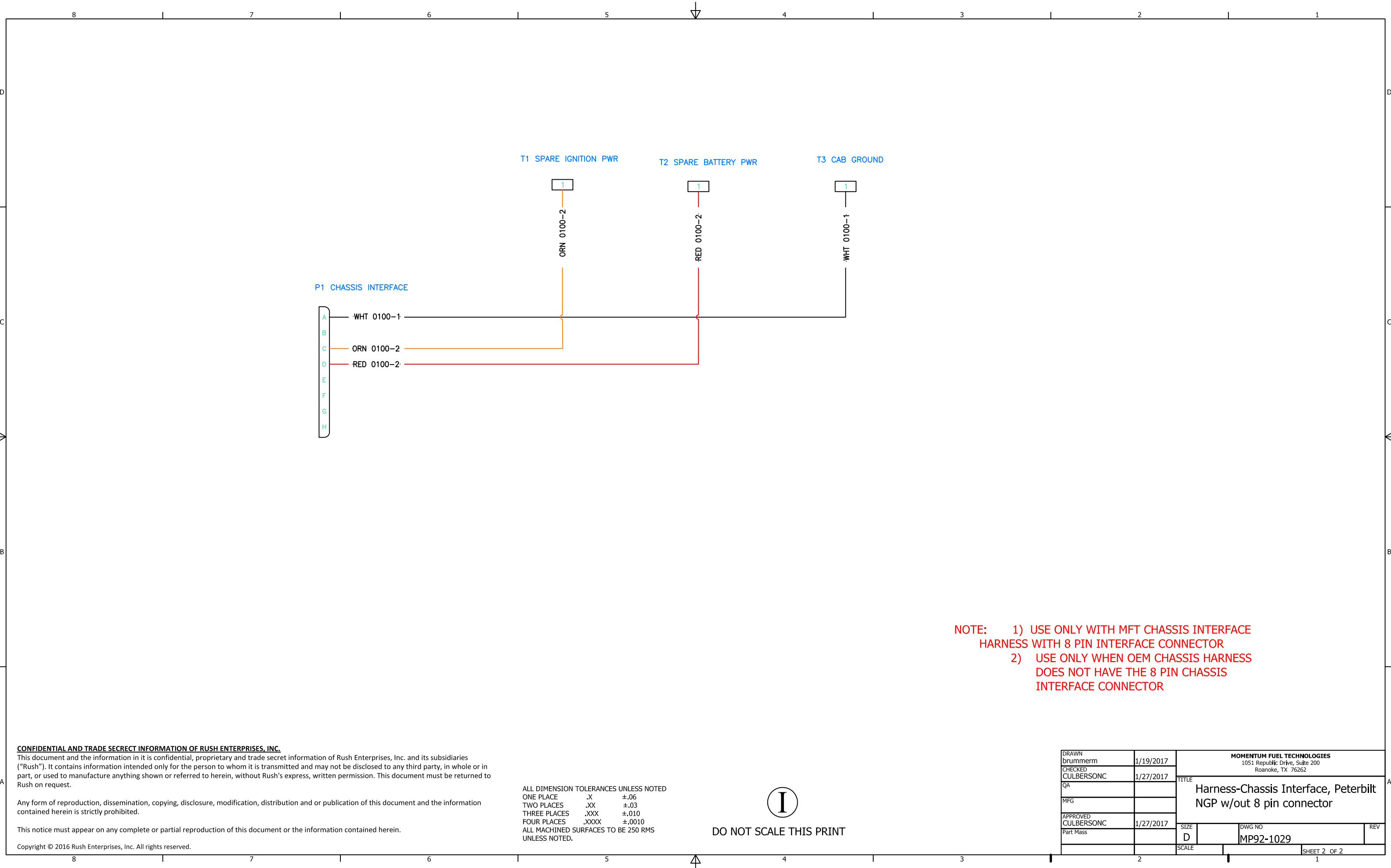
Copyright © 2016 Rush Enterprises, Inc. All rights reserved.

ALL DIMENSION TOLERANCES UNLESS NOTED  
 ONE PLACE .X ±.06  
 TWO PLACES .XX ±.03  
 THREE PLACES .XXX ±.010  
 FOUR PLACES .XXXX ±.0010  
 ALL MACHINED SURFACES TO BE 250 RMS UNLESS NOTED.



DO NOT SCALE THIS PRINT

DRAWN brummerm	1/19/2017	MOMENTUM FUEL TECHNOLOGIES 1051 Republic Drive, Suite 200 Roanoke, TX 76262	
CHECKED CULBERSONC	1/27/2017		
QA		TITLE Harness-Chassis Interface, Peterbilt NGP w/out 8 pin connector	
MFG		SIZE D	DWG NO MP92-1029
APPROVED CULBERSONC	1/27/2017	SCALE	REV
Part Mass			
		SHEET 1 OF 2	



NOTE: 1) USE ONLY WITH MFT CHASSIS INTERFACE  
 HARNESS WITH 8 PIN INTERFACE CONNECTOR  
 2) USE ONLY WHEN OEM CHASSIS HARNESS  
 DOES NOT HAVE THE 8 PIN CHASSIS  
 INTERFACE CONNECTOR

**CONFIDENTIAL AND TRADE SECRET INFORMATION OF RUSH ENTERPRISES, INC.**

This document and the information in it is confidential, proprietary and trade secret information of Rush Enterprises, Inc. and its subsidiaries ("Rush"). It contains information intended only for the person to whom it is transmitted and may not be disclosed to any third party, in whole or in part, or used to manufacture anything shown or referred to herein, without Rush's express, written permission. This document must be returned to Rush on request.

Any form of reproduction, dissemination, copying, disclosure, modification, distribution and or publication of this document and the information contained herein is strictly prohibited.

This notice must appear on any complete or partial reproduction of this document or the information contained herein.

Copyright © 2016 Rush Enterprises, Inc. All rights reserved.

ALL DIMENSION TOLERANCES UNLESS NOTED  
 ONE PLACE .X ±.06  
 TWO PLACES .XX ±.03  
 THREE PLACES .XXX ±.010  
 FOUR PLACES .XXXX ±.0010  
 ALL MACHINED SURFACES TO BE 250 RMS UNLESS NOTED.



DO NOT SCALE THIS PRINT

DRAWN brummern	1/19/2017	<b>MOMENTUM FUEL TECHNOLOGIES</b> 1051 Republic Drive, Suite 200 Roanoke, TX 76262	
CHECKED CULBERSONC	1/27/2017		
QA		<b>Harness-Chassis Interface, Peterbilt          NGP w/out 8 pin connector</b>	
MFG		SIZE D	REV
APPROVED CULBERSONC	1/27/2017	DWG NO MP92-1029	
Part Mass		SCALE	SHEET 2 OF 2