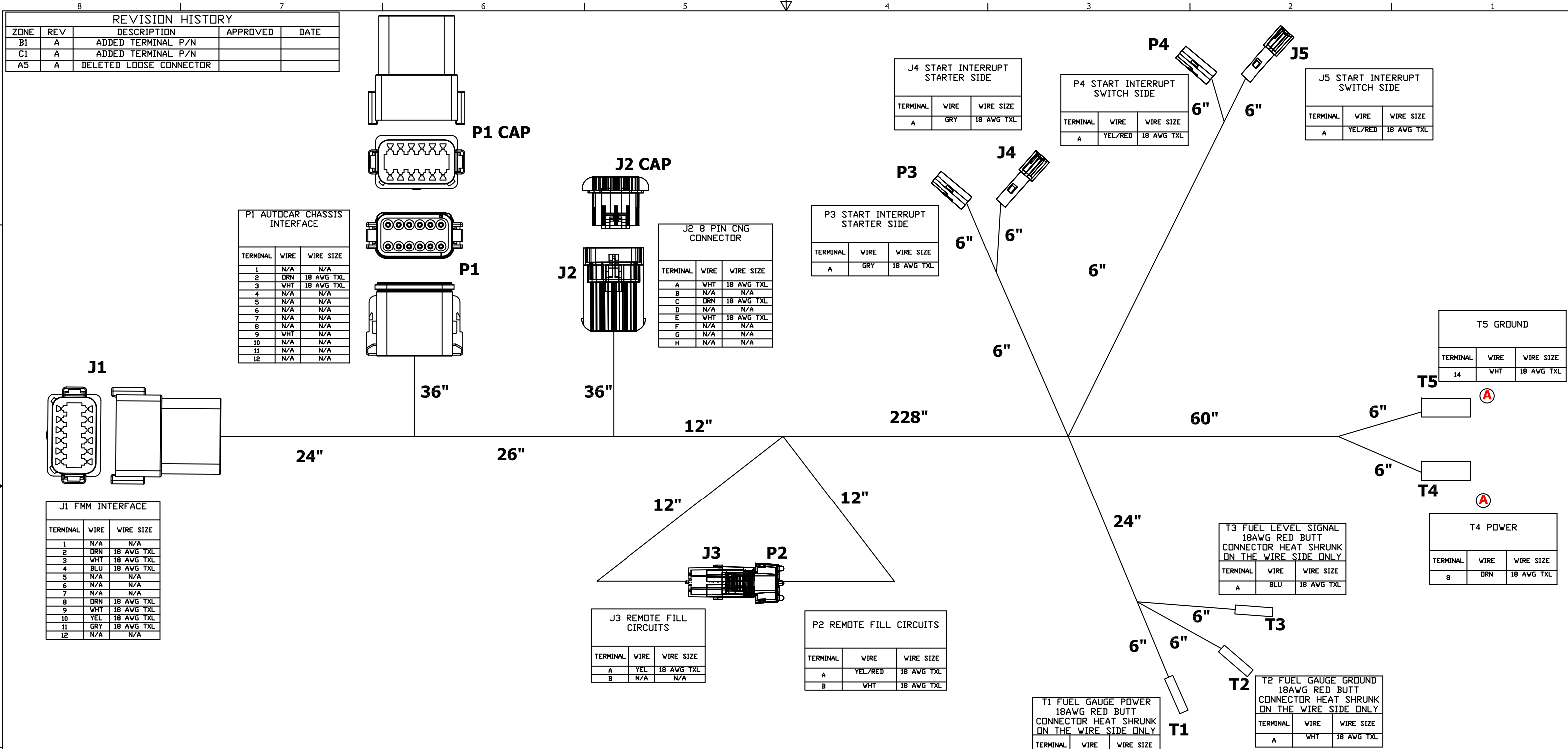


ZONE	REV	DESCRIPTION	APPROVED	DATE
B1	A	ADDED TERMINAL P/N		
C1	A	ADDED TERMINAL P/N		
A5	A	DELETED LOOSE CONNECTOR		



TERMINAL	WIRE	WIRE SIZE
1	N/A	N/A
2	DRN	18 AWG TXL
3	WHT	18 AWG TXL
4	BLU	18 AWG TXL
5	N/A	N/A
6	N/A	N/A
7	N/A	N/A
8	DRN	18 AWG TXL
9	WHT	18 AWG TXL
10	YEL	18 AWG TXL
11	GRY	18 AWG TXL
12	N/A	N/A

TERMINAL	WIRE	WIRE SIZE
1	N/A	N/A
2	DRN	18 AWG TXL
3	WHT	18 AWG TXL
4	N/A	N/A
5	N/A	N/A
6	N/A	N/A
7	N/A	N/A
8	N/A	N/A
9	WHT	N/A
10	N/A	N/A
11	N/A	N/A
12	N/A	N/A

TERMINAL	WIRE	WIRE SIZE
A	WHT	18 AWG TXL
B	N/A	N/A
C	DRN	18 AWG TXL
D	N/A	N/A
E	WHT	18 AWG TXL
F	N/A	N/A
G	N/A	N/A
H	N/A	N/A

TERMINAL	WIRE	WIRE SIZE
A	GRY	18 AWG TXL

TERMINAL	WIRE	WIRE SIZE
A	GRY	18 AWG TXL

TERMINAL	WIRE	WIRE SIZE
A	YEL/RED	18 AWG TXL

TERMINAL	WIRE	WIRE SIZE
A	YEL/RED	18 AWG TXL

TERMINAL	WIRE	WIRE SIZE
14	WHT	18 AWG TXL

TERMINAL	WIRE	WIRE SIZE
B	DRN	18 AWG TXL

TERMINAL	WIRE	WIRE SIZE
A	BLU	18 AWG TXL

TERMINAL	WIRE	WIRE SIZE
A	WHT	18 AWG TXL

TERMINAL	WIRE	WIRE SIZE
A	DRN	18 AWG TXL

- NOTES:**
- HARNESS TO BE BRAIDED WITH VN4400S OR EQUIVALENT PVC COATED YARN**
  - T1, T2, & T3, USE 18 AWG HEAT SHRINK RED BUTT CONNECTORS AND TO BE HEAT SHRUNK ON ONE END AND THE OTHER LEFT OPEN FOR USE**
  - WIRES TO BE 18 AWG TXL**
  - LEAVE THE LAST 6" OF WIRE ON T5 AND T4 UN-BRAIDED**

**CONFIDENTIAL AND TRADE SECRET INFORMATION OF NATURAL GAS FUEL SYSTEMS, INC. dba MOMENTUM FUEL TECHNOLOGIES**  
 This document and the information in it is confidential, proprietary and trade secret information of Natural Gas Fuel Systems, Inc. dba Momentum Fuel Technologies on behalf of itself and its subsidiaries and affiliates ("Momentum"). It contains information intended only for the person to whom it is transmitted and may not be disclosed to any third party, in whole or in part, or used to manufacture anything shown or referred to herein, without Momentum's express, written permission. This document must be returned to Momentum on request.

Any form of reproduction, dissemination, copying, disclosure, modification, distribution, and or publication of this document and the information contained herein is strictly prohibited.

This notice must appear on any complete or partial reproduction of this document or the information contained herein.

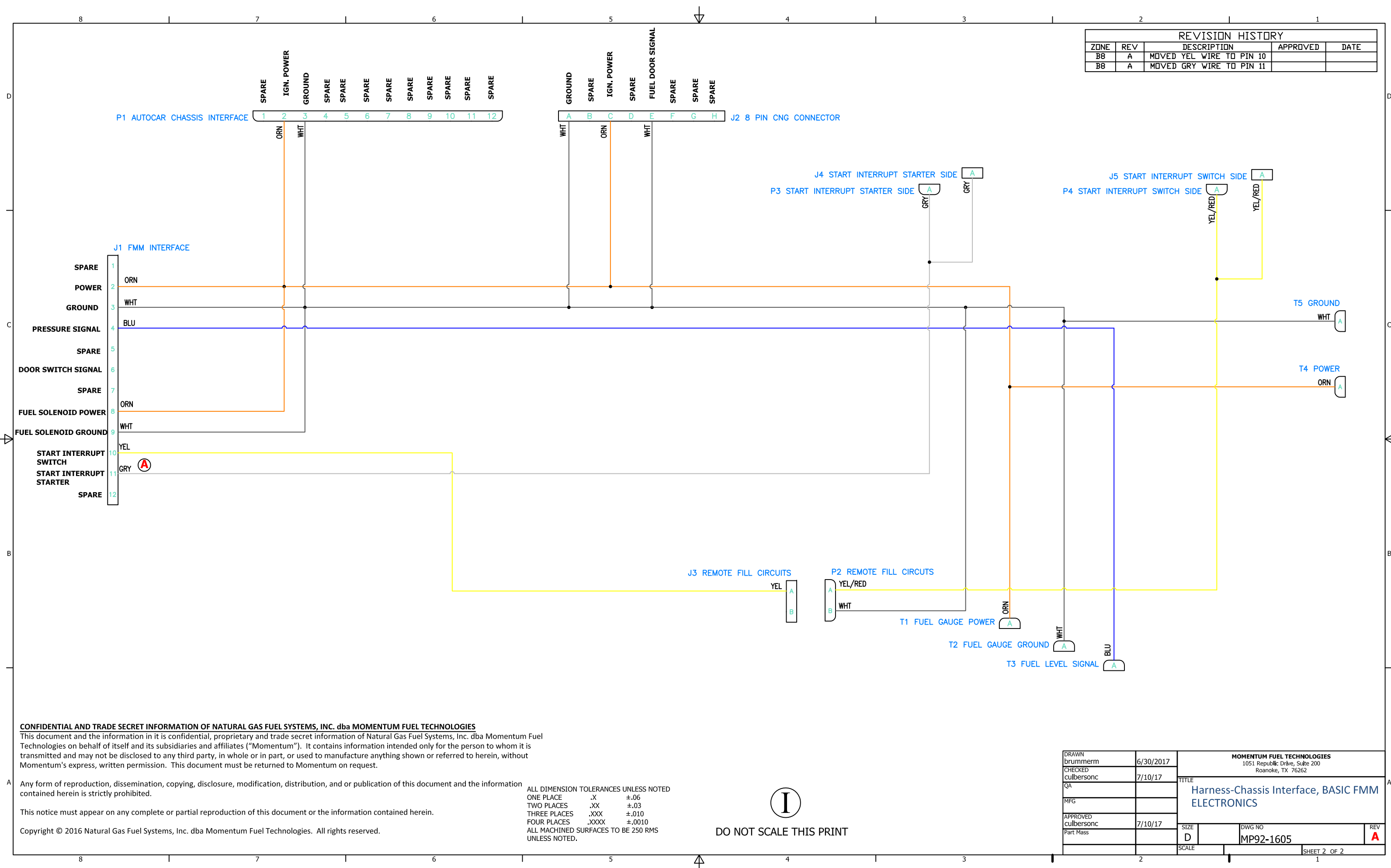
Copyright © 2016 Natural Gas Fuel Systems, Inc. dba Momentum Fuel Technologies. All rights reserved.

ALL DIMENSION TOLERANCES UNLESS NOTED  
 ONE PLACE .X ±.06  
 TWO PLACES .XX ±.03  
 THREE PLACES .XXX ±.010  
 FOUR PLACES .XXXX ±.0010  
 ALL MACHINED SURFACES TO BE 250 RMS UNLESS NOTED.

**I**  
 DO NOT SCALE THIS PRINT

DRAWN brummerrm	6/30/2017	MOMENTUM FUEL TECHNOLOGIES 1051 Republic Drive, Suite 200 Roanoke, TX 76262
CHECKED culbersonc	7/10/17	
QA		TITLE Harness-Chassis Interface, BASIC FMM ELECTRONICS
MFG		
APPROVED culbersonc	7/10/17	SIZE D
Part Mass		DWG NO MP92-1605
	SCALE	REV A
		SHEET 1 OF 2

REVISION HISTORY				
ZONE	REV	DESCRIPTION	APPROVED	DATE
B8	A	MOVED YEL WIRE TO PIN 10		
B8	A	MOVED GRY WIRE TO PIN 11		



**CONFIDENTIAL AND TRADE SECRET INFORMATION OF NATURAL GAS FUEL SYSTEMS, INC. dba MOMENTUM FUEL TECHNOLOGIES**  
 This document and the information in it is confidential, proprietary and trade secret information of Natural Gas Fuel Systems, Inc. dba Momentum Fuel Technologies on behalf of itself and its subsidiaries and affiliates ("Momentum"). It contains information intended only for the person to whom it is transmitted and may not be disclosed to any third party, in whole or in part, or used to manufacture anything shown or referred to herein, without Momentum's express, written permission. This document must be returned to Momentum on request.

Any form of reproduction, dissemination, copying, disclosure, modification, distribution, and or publication of this document and the information contained herein is strictly prohibited.

This notice must appear on any complete or partial reproduction of this document or the information contained herein.

Copyright © 2016 Natural Gas Fuel Systems, Inc. dba Momentum Fuel Technologies. All rights reserved.

ALL DIMENSION TOLERANCES UNLESS NOTED  
 ONE PLACE .X ±.06  
 TWO PLACES .XX ±.03  
 THREE PLACES .XXX ±.010  
 FOUR PLACES .XXXX ±.0010  
 ALL MACHINED SURFACES TO BE 250 RMS UNLESS NOTED.



DO NOT SCALE THIS PRINT

DRAWN brummern	6/30/2017	MOMENTUM FUEL TECHNOLOGIES 1051 Republic Drive, Suite 200 Roanoke, TX 76262	
CHECKED culbersonc	7/10/17		
QA		TITLE Harness-Chassis Interface, BASIC FMM ELECTRONICS	
MFG			
APPROVED culbersonc	7/10/17	SIZE D	DWG NO MP92-1605
Part Mass		SCALE	REV A
		SHEET 2 OF 2	