

- NOTE:**
- 1) 520 Truck Model1 ONLY
 - 2) SHIP CONNECTOR LOOSE IN A BAG TIED TO THE HARNESSES CONNECTOR PART NUMBER IS HDP26-18-8PN
 - 3) LABEL THE TERMINAL WIRES WITH CORRESPONDING PIN NUMBER
 - 4) POWER, GROUND, AND SWITCH POWER TO BE 16 AWG TXL ALL OTHER WIRES TO BE 18 AWG TXL
 - 5) VN 4400S OR EQUIVALENT PVC COATED YARN

CONFIDENTIAL AND TRADE SECRET INFORMATION OF RUSH ENTERPRISES, INC.

This document and the information in it is confidential, proprietary and trade secret information of Rush Enterprises, Inc. and its subsidiaries ("Rush"). It contains information intended only for the person to whom it is transmitted and may not be disclosed to any third party, in whole or in part, or used to manufacture anything shown or referred to herein, without Rush's express, written permission. This document must be returned to Rush on request.

Any form of reproduction, dissemination, copying, disclosure, modification, distribution and or publication of this document and the information contained herein is strictly prohibited.

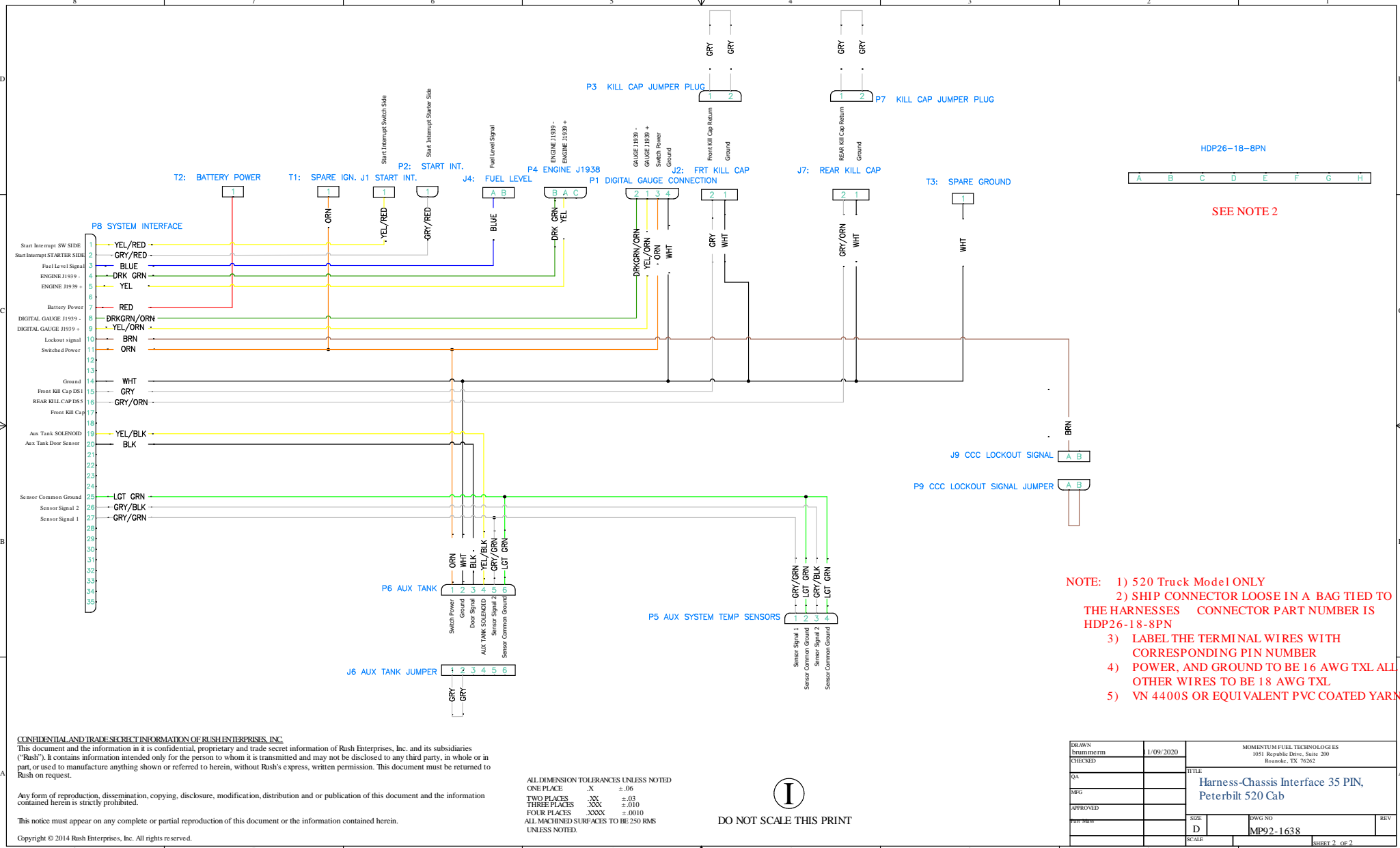
This notice must appear on any complete or partial reproduction of this document or the information contained herein.

Copyright © 2014 Rush Enterprises, Inc. All rights reserved.

ALL DIMENSION TOLERANCES UNLESS NOTED
 ONE PLACE .XX ±.06
 TWO PLACES .XXX ±.03
 THREE PLACES .XXXX ±.010
 FOUR PLACES .XXXXX ±.0010
 ALL MACHINED SURFACES TO BE 250 RMS UNLESS NOTED.

I
 DO NOT SCALE THIS PRINT

DRAWN brumme rfm	11/09/2020	MOMENTUM FUEL TECHNOLOGIES 1051 Republic Drive, Suite 200 Rowles, TX 76262	
CHECKED		TITLE Harness-Chassis Interface 35 PIN, Peterbilt 520 Cab	
QA		SIZE D	DWG NO MP92-1638
MBG		SCALE	REV
APPROVED		SHEET	1 OF 2



HDP26-18-8PN

SEE NOTE 2

- NOTE:
- 1) 520 Truck Model ONLY
 - 2) SHIP CONNECTOR LOOSE IN A BAG TIED TO THE HARNESSES CONNECTOR PART NUMBER IS HDP26-18-8PN
 - 3) LABEL THE TERMINAL WIRES WITH CORRESPONDING PIN NUMBER
 - 4) POWER, AND GROUND TO BE 16 AWG TXL ALL OTHER WIRES TO BE 18 AWG TXL
 - 5) VN 4400S OR EQUIVALENT PVC COATED YARN

CONFIDENTIAL AND TRADE SECRET INFORMATION OF RUSH ENTERPRISES, INC.
 This document and the information in it is confidential, proprietary and trade secret information of Rush Enterprises, Inc. and its subsidiaries ("Rush"). It contains information intended only for the person to whom it is transmitted and may not be disclosed to any third party, in whole or in part, or used to manufacture anything shown or referred to herein, without Rush's express, written permission. This document must be returned to Rush on request.

Any form of reproduction, dissemination, copying, disclosure, modification, distribution and or publication of this document and the information contained herein is strictly prohibited.

This notice must appear on any complete or partial reproduction of this document or the information contained herein.

Copyright © 2014 Rush Enterprises, Inc. All rights reserved.

ALL DIMENSION TOLERANCES UNLESS NOTED
 ONE PLACE .X ±.06
 TWO PLACES .XX ±.03
 THREE PLACES .XXX ±.010
 FOUR PLACES .XXXX ±.0010
 ALL MACHINED SURFACES TO BE 250 RMS UNLESS NOTED.

I
 DO NOT SCALE THIS PRINT

DRAWN brummert	11/09/2020	MOMENTUM FUEL TECHNOLOGIES 1051 Republic Drive, Suite 200 Roanoke, TX 76262	
CHECKED		TITLE Harness-Chassis Interface 35 PIN, Peterbilt 520 Cab	
QA		SIZE	DWG NO
MEG		D	MP92-1638
APPROVED		SCALE	REV
			MP92-1638
			SHEET 2 OF 2