

**P9: DOOR SWITCH**

TERMINAL	WIRE	WIRE SIZE
1	DRN	18 AWG TXL
2	WHT	18 AWG TXL
3	GRY/BLU	18 AWG TXL
4		

**P6: ECU**

TERMINAL	WIRE	WIRE SIZE
1	GRN/BLK	18 AWG TXL
2	DRN	18 AWG TXL
3		
4		
5	BLU/BLK	18 AWG TXL
6	GRN/DRN	18 AWG TXL
7	YEL/DRN	18 AWG TXL
8	GRN/BRN	18 AWG TXL
9	YEL/BRN	18 AWG TXL
10	BLK	18 AWG TXL
11	GRY/BLU	18 AWG TXL
12	GRY/BRN	18 AWG TXL
13	DRN	18 AWG TXL
14	WHT	18 AWG TXL
15	GRY	18 AWG TXL
16	BLU/RED	18 AWG TXL
17	GRY/DRN	18 AWG TXL
18		
19		
20	WHT/BLK	18 AWG TXL
21		
22	GRY/BLK	18 AWG TXL
23	BRN	18 AWG TXL
24	GRY/WHT	18 AWG TXL

**P5: FLIM**

TERMINAL	WIRE	WIRE SIZE
A	DRN	18 AWG TXL
B	GRY/WHT	18 AWG TXL
C	WHT	18 AWG TXL
D	BLU	18 AWG TXL

**J3: STARTER RELAY**

TERMINAL	WIRE	WIRE SIZE
30	YEL/RED	18 AWG TXL
85	YEL/RED	18 AWG TXL
86	GRY/BRN	18 AWG TXL
87A		
87	GRY/RED	18 AWG TXL

**J2: FUEL RELAY**

TERMINAL	WIRE	WIRE SIZE
30	DRN	18 AWG TXL
85	DRN	18 AWG TXL
86	GRY/BLK	18 AWG TXL
87A		
87	YEL/BLK	18 AWG TXL

**REVISION HISTORY**

ZONE	REV	DISCRIPTION	APPROVED	DATE
C5	A	ADDED PIN 17		
B1	A	ADDED PIN R		

**P10: DOOR LAMP**

TERMINAL	WIRE	WIRE SIZE
1	WHT	18 AWG TXL
2	GRY/BLU	18 AWG TXL

**P1: BULKHEAD**

TERMINAL	WIRE	WIRE SIZE
A		
B	DRN	18 AWG TXL
C	YEL/RED	18 AWG TXL
D	GRY/RED	18 AWG TXL
E		
F	BLU	18 AWG TXL
G		
H	GRN	18 AWG TXL
J	YEL	18 AWG TXL
K		
L	GRY	18 AWG TXL
M		
N		
D	WHT	18 AWG TXL
P	YEL/BLK	18 AWG TXL
Q	YEL/BLK	18 AWG TXL
R	GRY/DRN	18 AWG TXL
S		
T	WHT/BLK	18 AWG TXL
U	BLK	18 AWG TXL
V		
W		
X	BRN	18 AWG TXL

**P4: AUX**

TERMINAL	WIRE	WIRE SIZE
A		
B	WHT	18 AWG TXL
C	DRN	18 AWG TXL

**P3: J1939 CAN 1**

TERMINAL	WIRE	WIRE SIZE
A	YEL/BRN	18 AWG TXL
B	GRN/BRN	18 AWG TXL
C		

**P2: J1939 CAN 2**

TERMINAL	WIRE	WIRE SIZE
A	YEL/DRN	18 AWG TXL
B	GRN/DRN	18 AWG TXL
C		

**P7: SENSOR**

TERMINAL	WIRE	WIRE SIZE
1	GRN/BLK	18 AWG TXL
2	DRN	18 AWG TXL
3	BLU/BLK	18 AWG TXL
4	BLU/RED	18 AWG TXL

**P8: SOLENOID**

TERMINAL	WIRE	WIRE SIZE
1	YEL/BLK	18 AWG TXL
2	WHT	18 AWG TXL

**J1: J1939 TO BULKHEAD**

TERMINAL	WIRE	WIRE SIZE
A	YEL	18 AWG TXL
B	GRN	18 AWG TXL
C		

- NOTE:**
- 1) REPLACES MP92-1020
  - 2) HARNESS TO BE BRAIDED WITH VN4400S OR EQUIVALENT PVC COATED YARN
  - 3) USED WITH SIDE MOUNTS WITH VERIFLOW REGULATORS
  - 4) ALL WIRES TO BE 18 AWG TXL
  - 5) PLUG ALL UNUSED CAVITIES

**CONFIDENTIAL AND TRADE SECRET INFORMATION OF NATURAL GAS FUEL SYSTEMS, INC. dba MOMENTUM FUEL TECHNOLOGIES**  
 This document and the information in it is confidential, proprietary and trade secret information of Natural Gas Fuel Systems, Inc. dba Momentum Fuel Technologies on behalf of itself and its subsidiaries and affiliates ("Momentum"). It contains information intended only for the person to whom it is transmitted and may not be disclosed to any third party, in whole or in part, or used to manufacture anything shown or referred to herein, without Momentum's express, written permission. This document must be returned to Momentum on request.

Any form of reproduction, dissemination, copying, disclosure, modification, distribution, and or publication of this document and the information contained herein is strictly prohibited.

This notice must appear on any complete or partial reproduction of this document or the information contained herein.

Copyright © 2016 Natural Gas Fuel Systems, Inc. dba Momentum Fuel Technologies. All rights reserved.

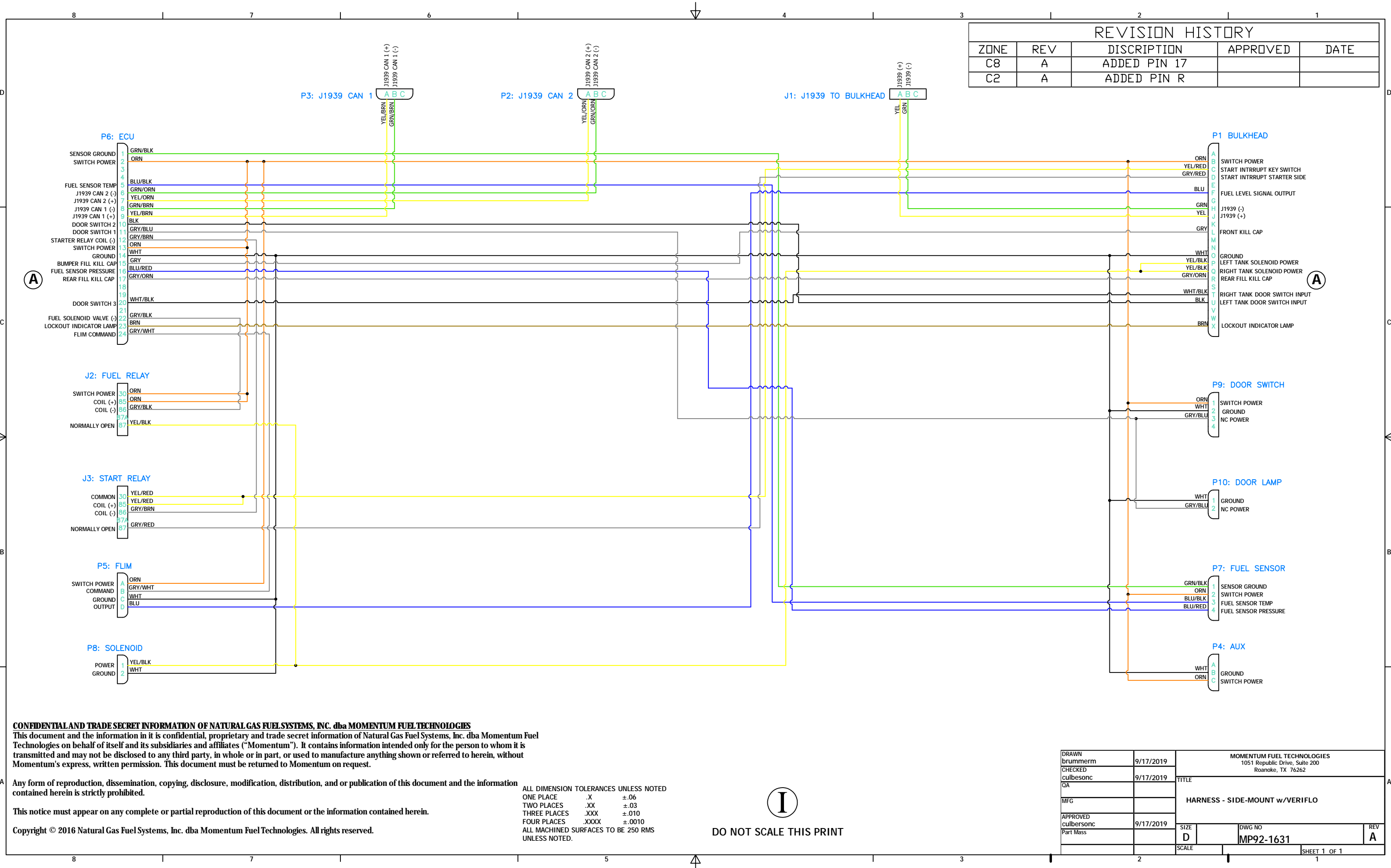
ALL DIMENSION TOLERANCES UNLESS NOTED  
 ONE PLACE .X ±.06  
 TWO PLACES .XX ±.03  
 THREE PLACES .XXX ±.010  
 FOUR PLACES .XXXX ±.0010  
 ALL MACHINED SURFACES TO BE 250 RMS UNLESS NOTED.



DO NOT SCALE THIS PRINT

DRAWN	brummern	9/17/2019	MOMENTUM FUEL TECHNOLOGIES 1051 Republic Drive, Suite 200 Roanoke, TX 76262	
CHECKED	culbersonc	9/17/2019	TITLE HARNESS - SIDE-MOUNT w/VERIFLO	
QA				
MFG				
APPROVED	culbersonc	9/17/2019		
Part Mass			SIZE D	DWG NO MP92-1631
			SCALE	REV A
				SHEET 1 OF 1

REVISION HISTORY				
ZONE	REV	DISCRIPTION	APPROVED	DATE
C8	A	ADDED PIN 17		
C2	A	ADDED PIN R		



**CONFIDENTIAL AND TRADE SECRET INFORMATION OF NATURAL GAS FUEL SYSTEMS, INC. dba MOMENTUM FUEL TECHNOLOGIES**  
 This document and the information in it is confidential, proprietary and trade secret information of Natural Gas Fuel Systems, Inc. dba Momentum Fuel Technologies on behalf of itself and its subsidiaries and affiliates ("Momentum"). It contains information intended only for the person to whom it is transmitted and may not be disclosed to any third party, in whole or in part, or used to manufacture anything shown or referred to herein, without Momentum's express, written permission. This document must be returned to Momentum on request.

Any form of reproduction, dissemination, copying, disclosure, modification, distribution, and or publication of this document and the information contained herein is strictly prohibited.

This notice must appear on any complete or partial reproduction of this document or the information contained herein.

Copyright © 2016 Natural Gas Fuel Systems, Inc. dba Momentum Fuel Technologies. All rights reserved.

ALL DIMENSION TOLERANCES UNLESS NOTED		
ONE PLACE	.X	±.06
TWO PLACES	.XX	±.03
THREE PLACES	.XXX	±.010
FOUR PLACES	.XXXX	±.0010
ALL MACHINED SURFACES TO BE 250 RMS UNLESS NOTED.		



DO NOT SCALE THIS PRINT

DRAWN brummerm	9/17/2019	MOMENTUM FUEL TECHNOLOGIES 1051 Republic Drive, Suite 200 Roanoke, TX 76262	
CHECKED culbesonc	9/17/2019	TITLE	
GA		HARNES - SIDE-MOUNT w/VERIFLO	
MFG			
APPROVED culbesonc	9/17/2019	SIZE D	DWG NO MP92-1631
Part Mass		SCALE	REV A
		SHEET 1 OF 1	